

# NORTHWOOD COMMUNITY PROFILE

**SRPC** FISCAL  
YEAR  
**'24**  
DATA SNAPSHOT

**ACCEPTED:**

**STRAFFORD**  
Regional Planning Commission

# SRPC Regional Data Snapshot

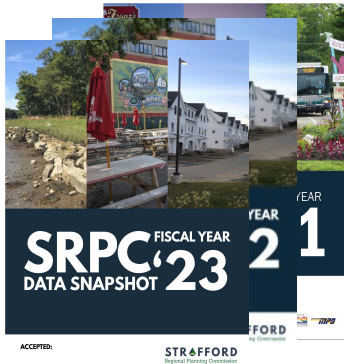
This document is a component of the SRPC Regional Data Snapshot.

SRPC conducts region-wide analysis of a number of data metrics each year for different projects and plans. The Regional Data Snapshot was a new document in 2021, and updated in April of each year, that contains many of these analyses in one place. The Data Snapshot covers demographics, economic vitality, livability and quality of life, mobility and accessibility, and resiliency. The Data Snapshot will be updated every year and additional metrics will be included as they are developed.

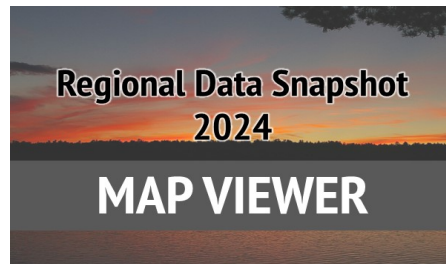
In addition to the data metrics that are tracked annually, SRPC is also tracking several COVID-19 specific metrics to track the region's recovery from the pandemic in the Regional COVID-19 Data Snapshot.

<http://strafford.org/measure/data-snapshot/>

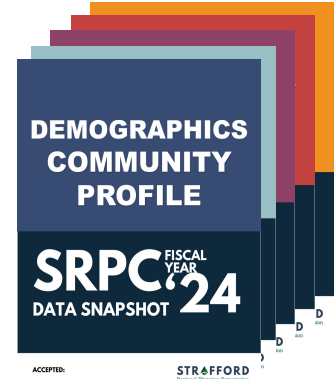
## Other Documents



Past Editions



Interactive Map Viewer



Community Profiles

## Staff



Rachel Dewey



Stephen Geis



Mark Davie



Jackson Rand

## Future Editions

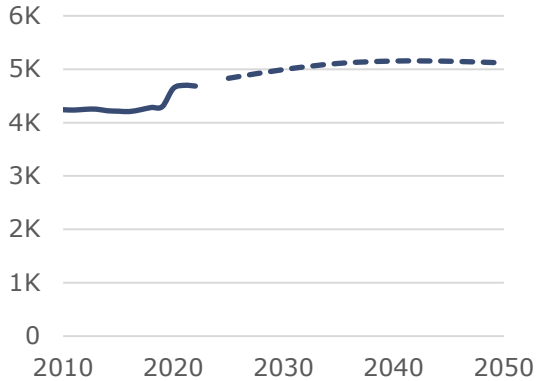
Future editions of the Data Snapshot will include the following changes:

- Expand on topics including public health, water resources, recreation, and more.
- An appendix including data tables.
- An interactive data viewer for non-map data.

# Community Profile

## Demographics: Northwood, Rockingham County

### Population Trends and Projections



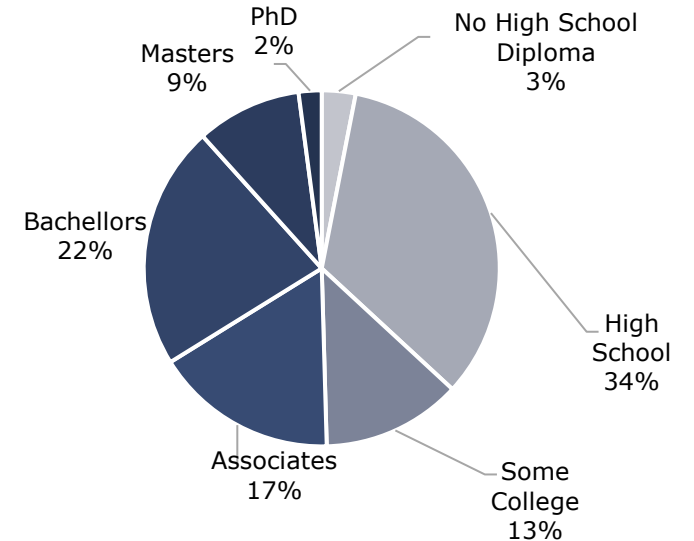
### Population by Sex



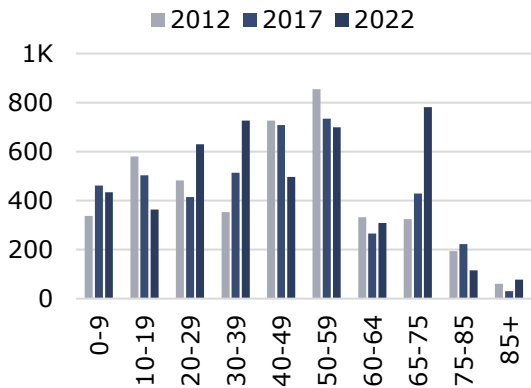
### Population by Race

	2012	2017	2022
Non-Hispanic White	94.3%	92.8%	90.9%
Black	0.0%	0.0%	1.9%
Native American	0.0%	0.0%	0.2%
Asian	1.2%	0.8%	0.7%
Pacific Islander	0.0%	0.0%	0.0%
Other	0.0%	0.0%	0.0%
Two Or More	1.8%	1.5%	0.6%
Hispanic	0.9%	3.5%	5.2%

### Educational Attainment of Adults



### Population by Age



### Sources of Population Change

Births	412
- Deaths	-296
+ Migration	284
<b>Total Change (2010-2019)</b>	<b>400</b>

### Population with a Disability<sup>1</sup>

	2012	2017	2022
With a Disability	428	395	403

<sup>1</sup> People who reported having a disability when responding to the ACS.

### Veterans

	2012	2017	2022
Veterans	525	373	460

### Population over 25

3,447

### Public School Enrollment

Year	Kind.	Elem.	Mid.	High	Total
'13/'14	32	220	160	258	670
'14/'15	42	210	165	243	660
'15/'16	31	224	151	232	638
'16/'17	34	212	135	248	629
'17/'18	41	217	134	250	642
'18/'19	41	210	127	244	622
'19/'20	34	227	141	212	614
'20/'21	26	195	137	190	548
'21/'22	40	180	133	197	550
'22/'23	37	192	138	186	553

### Median Age

2012	45.4
2017	42.3
2022	43.5

### Life Expectancy

78.6	
<b>Under 18</b>	16.1%
<b>Over 65</b>	21.0%

Data Sources: US Census Bureau ACS, NH BEA OPD, NH Department of Education, CDC, NH Secretary of State Vital Statistics

Learn more at <https://tinyurl.com/datasnapshot2024>

# Community Profile

## Economic Vitality: Northwood, Rockingham County

### Employment

Employment Projections	2015	2025	2035	2045
	1,055	1,123	1,198	1,281

### Labor Force Efficiency



- Lives here, Works elsewhere
- Lives here and Works here
- Lives elsewhere, Works here

### Labor Force



Month	Labor Force	Employed	Unemployment Rate
Jan. 2020	2,654	2,581	2.8%
Apr. 2020	2,557	2,160	15.5%
Apr. 2021	2,590	2,508	3.2%
Apr. 2022	2,639	2,595	1.7%
Apr. 2023	2,626	2,586	1.5%
Jan. 2024	2,680	2,624	2.1%

### Recovery from Initial COVID Disruptions to Labor Force

As of January 2024, the Civilian Labor Force **has not recovered** and the Unemployment rate **has not recovered** to pre-COVID trends. ("Recovered" indicates that each month from Oct. '23 to Jan. '24 was better than the same period in '19-'20)

### Household Incomes

	Median	All	Owners	Renters
2012		\$65,417	\$68,167	\$52,250
2017		\$86,910	\$90,230	\$49,241
2022		\$122,294	\$130,395	\$46,538

Income	All	Owners	Renters
Households	1,770	1,608	162
<\$10K	2.3%	1.9%	6.2%
\$10-15K	2.4%	0.6%	20.4%
\$15-25K	2.0%	1.6%	5.6%
\$25-35K	5.3%	4.5%	13.0%
\$35-50K	5.3%	5.0%	8.0%
\$50-75K	13.3%	10.8%	38.3%
\$75-100K	10.3%	11.4%	0.0%
\$100-150K	30.7%	32.9%	8.6%
> \$150K	28.5%	31.4%	0.0%

### Poverty and Income Inequality

#### Population in households...

Under 100% of Poverty Level	153
Under 200% of Poverty Level	466

#### Households with incomes...

Less than full time Min. Wage (\$15,080 per year)	4.7%
---	------

Less than the Living Wage for 1 Adult: \$53,518 for Rockingham County*	17.2%
--	-------

\* Rounding down to income bracket in table

Gini Index	0.32
------------	------

	Lives Here Works	Here Away	Here Here	Away Here
Total	2,394	229	1,176	
Worker Age	Under 25	477	55	363
	30 - 54	1,259	102	540
	Over 55	658	72	273
Monthly Income	< \$1,250	343	73	268
	\$1,250 - \$3,333	495	66	347
	> \$3,333	1,556	90	561
Sector	Producing	407	46	215
	Trade, Transportation, and Utilities	464	41	350
	All others	1,523	142	611

Data Sources: US Census Bureau ACS and LEHD, MIT Living Wage Calculator, NHES LAUS

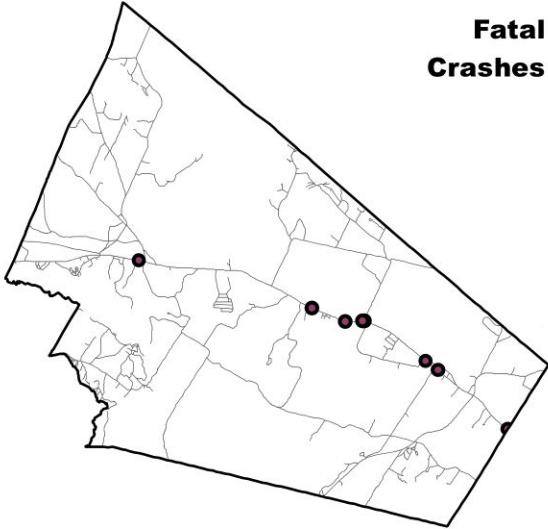
Learn more at <https://tinyurl.com/datasnapshot2024>

# Community Profile

## Livability and Quality of Life: Northwood, Rockingham County

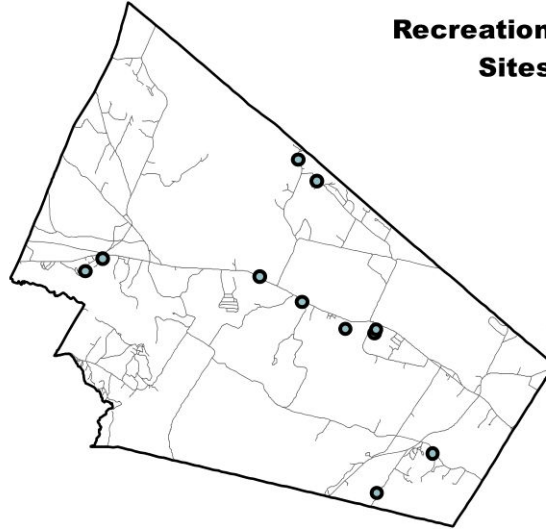
### Traffic Safety (2013-2022)

Fatal Crashes



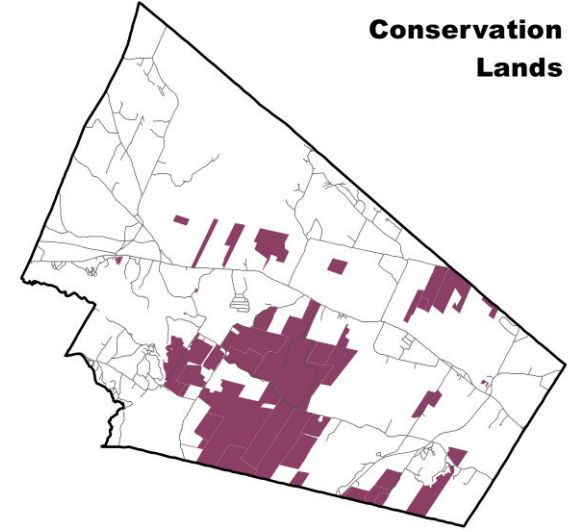
### Recreation Sites

Recreation Sites



### Conservation Land

Conservation Lands



Square Miles: 4.91

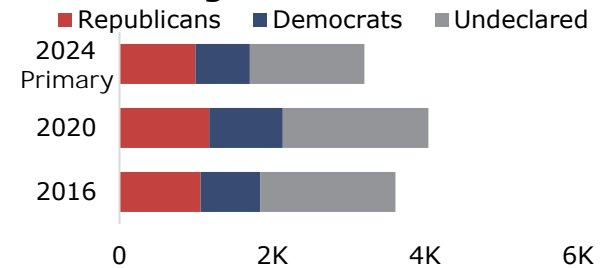
Percent of Total Land: 16%

Year	Fatalities	Serious Injuries
2013	1	1
2014	1	0
2015	0	0
2016	0	1
2017	1	1
2018	2	1
2019	2	1
2020	0	2
2021	1	2
2022	0	6
<b>Total</b>	<b>8</b>	<b>15</b>

Recreation Site Type	Count
Playgrounds	1
Parks	0
Trails/open land	2
Sports	3
Beaches/pools	4
Boat launch/etc.	1
Winter	0
Other	0
<b>Total</b>	<b>11</b>

### Civic Participation

#### Registered Voters



#### Participation in past elections

Year	Registered	Ballots Cast	Rate
2016	3,613	2,658	74%
2020	4,043	2,903	72%

Data Sources: USDOT NHTSA FARS, NHDOS, SRPC POP!, GRANIT, NHSOS.

Learn more at <https://tinyurl.com/datasnapshot2024>

# Community Profile

## Housing: Northwood, Rockingham County

### Housing Stock

Occupancy	2012	2017	2022
Total	2,240	2,098	2,283
Occupied	1,766	1,582	1,770
Vacant	474	516	513

### Residential Building Permits

Permit Type	2000-09	2010-19	2020-22
Single Family	320	125	37
Multi-Family	57	0	0
Mobile Home	52	11	7
Other	6	0	0
Total	435	136	44

### Stock by Age

	All	Owner	Renter
Before 1940	621	536	85
1940-1979	336	300	36
1980-1999	385	353	32
2000-2009	235	226	9
After 2010	193	193	0

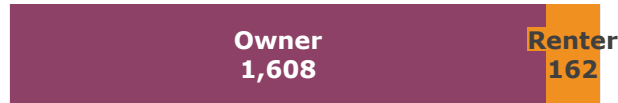
### Units In Structure

Units	Count
1	2,142
2	101
3-9	20
10-50	20
>50	0

### Bedrooms in Unit

Bedrooms	Count
0	14
1	105
2	678
3	1,176
4+	310

### Household Tenure



### Average Household Size

	2012	2017	2022
All	2.4	2.71	2.62
Owner	2.4	2.78	2.69
Renter	2.4	2.09	1.85

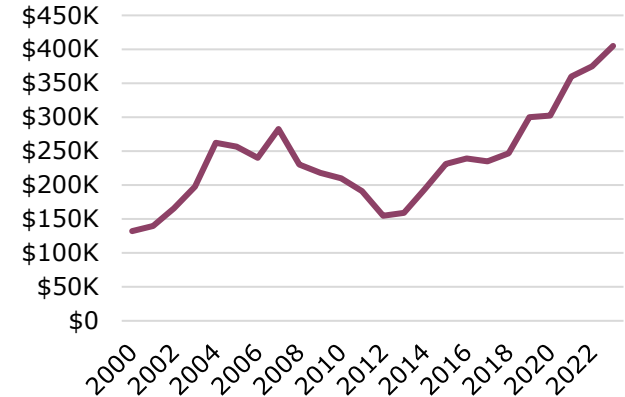
### Household Size and Type

Size	2012	2017	2022
1	275	237	260
2	931	761	808
3	281	158	382
4	189	237	148
5+	90	189	172
Family	1,260	1,230	1,390
Married Couple	1,077	1,061	1,212
Other	183	169	178
Non-Family	506	352	380
Live Alone	275	237	260
Not Alone	231	115	120

### Property Tax Rates

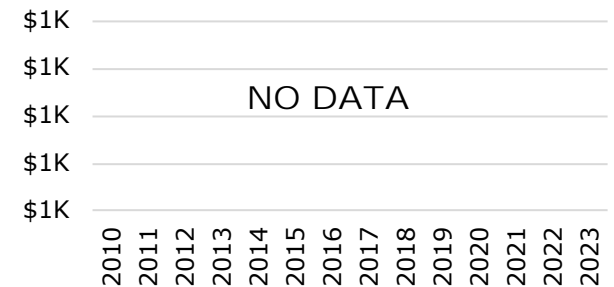
	2010	2020	2022
Rate per \$1,000	\$24.56	\$17.77	\$12.58

### Median Purchase Price



**In 2023** the median purchase price was \$405,000 and a 10% down payment was \$40,500 . The monthly payment for a home of this price would be \$3,449

### Median Rent



### Housing Market Status

Single Family Home Sales 2023	
Closed Sales	61 total in 2023
Days on Market	Min=9(Jun-23)
Months Supply	Min=1.3(Dec-23)

Data Sources: US Census Bureau ACS, SRPC Building Permit Database, NHHFA, NH Public Finance Consortium, NH Association of Realtors

Learn more at <https://tinyurl.com/datasnapshot2024>

# Community Profile

## Mobility and Accessibility: Northwood, Rockingham County



Served by...	
Amtrak	No
COAST	No
Wildcat	No
ACT Providers	Yes

Legislative Class of Roads	
1-4 (State and Federal)	49.53
5 (Local)	32.17
6 (Unmaintained)	8.22
<b>Total</b>	<b>89.92</b>

Bike and Pedestrian Infrastructure Miles	
Low BLTS (1-2)	31.50
High BLTS (3-5)	17.37
Sidewalks	1.10

Bridges and Dams	
Total Bridges	1
Red List Bridges	1
Total Dams	17
High Hazard Dams	0

Data Sources: NHDOT, NHDES, Amtrak, COAST, UNH, SRPC BLTS, SRPC Sidewalks

Learn more at <https://tinyurl.com/datasnapshot2024>

# Community Profile

## Resiliency: Northwood, Rockingham County

### Contamination Sites

Open Remediation	29
Closed Remediation	52
<b>Total Sites</b>	<b>81</b>

### Hazard Mitigation Plans

Status	Active
Expiration Date	07/26/25

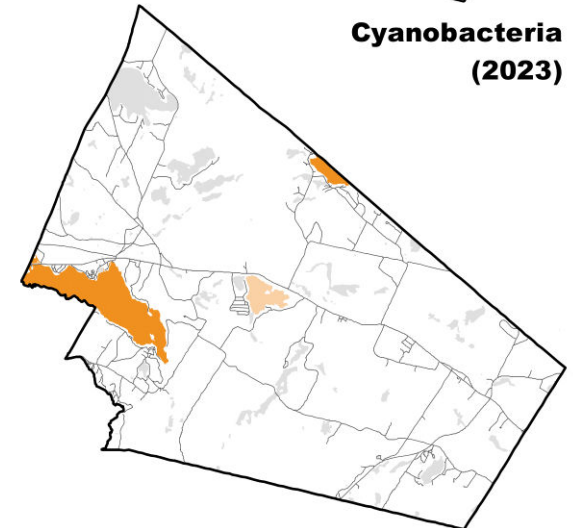
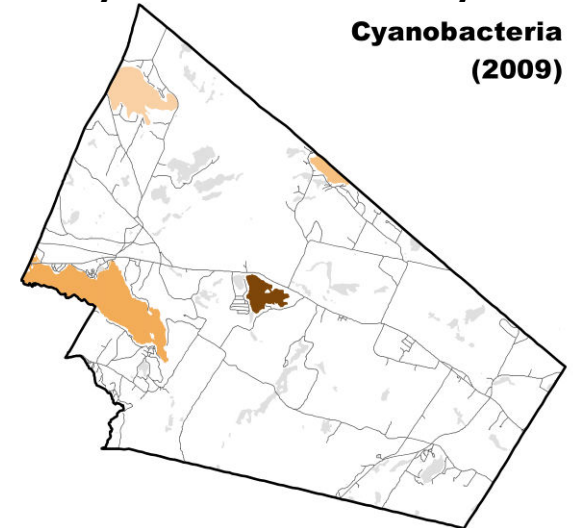
### USDA Plant Hardiness

Zones in 2012	Mostly 5B, Some 5A
Average Extreme Min. Temp. Tolerated	-15 to -10
Zones in 2023	Mostly 6A, Some 5B
Average Extreme Min. Temp. Tolerated	-10 to -5

### FEMA Risk Ratings

Risk Type	Rating (Summary of Census Tracts)
Coastal Flooding	No Rating
Riverine Flooding	Relatively Low
Cold Wave	Relatively Low
Heat Wave	Relatively Low
Tornado	Relatively Low
Hurricane & Tropical Storms	Relatively Moderate
Hail	Relatively Low
Landslide	Relatively Moderate
Ice Storm	Relatively Low
Winter Weather	Relatively Low
Drought	No Rating
Wildfire	Relatively Low
Lightning	Relatively Moderate
Strong Winds	Relatively Low

### Cyanobacteria Alert Days



### Legend

Cyanobacteria (Since 2009)	Cyanobacteria (2023)
0 Days	0 Days
1 - 24 Days	1 - 24 Days
25 - 49 Days	25 - 49 Days
50 - 99 Days	> 50 Days
100 - 199 Days	
> 200 Days	

Data Sources: NHDES, USDA, FEMA

Learn more at <https://tinyurl.com/datasnapshot2024>