

# FARMINGTON COMMUNITY PROFILE

**SRPC** FISCAL  
YEAR  
**'24**  
DATA SNAPSHOT

**ACCEPTED:**

**STRAFFORD**  
Regional Planning Commission

# SRPC Regional Data Snapshot

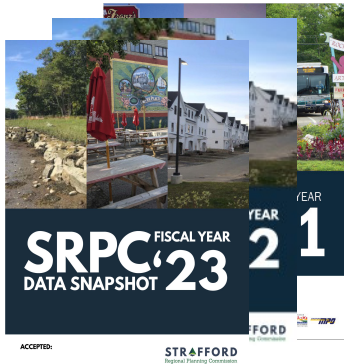
This document is a component of the SRPC Regional Data Snapshot.

SRPC conducts region-wide analysis of a number of data metrics each year for different projects and plans. The Regional Data Snapshot was a new document in 2021, and updated in April of each year, that contains many of these analyses in one place. The Data Snapshot covers demographics, economic vitality, livability and quality of life, mobility and accessibility, and resiliency. The Data Snapshot will be updated every year and additional metrics will be included as they are developed.

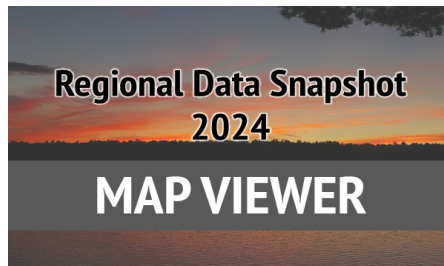
In addition to the data metrics that are tracked annually, SRPC is also tracking several COVID-19 specific metrics to track the region's recovery from the pandemic in the Regional COVID-19 Data Snapshot.

<http://strafford.org/measure/data-snapshot/>

## Other Documents



Past Editions



Interactive Map Viewer



Community Profiles

## Staff



Rachel Dewey



Stephen Geis



Mark Davie



Jackson Rand

## Future Editions

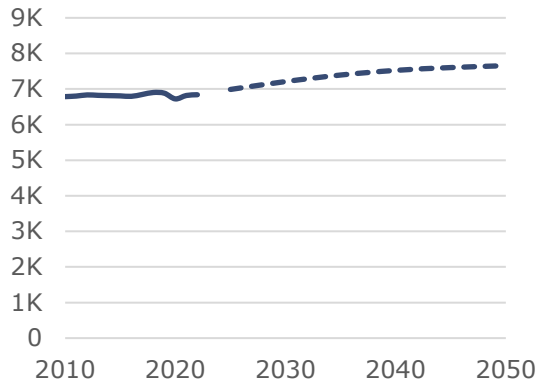
Future editions of the Data Snapshot will include the following changes:

- Expand on topics including public health, water resources, recreation, and more.
- An appendix including data tables.
- An interactive data viewer for non-map data.

# Community Profile

## Demographics: Farmington, Strafford County

### Population Trends and Projections



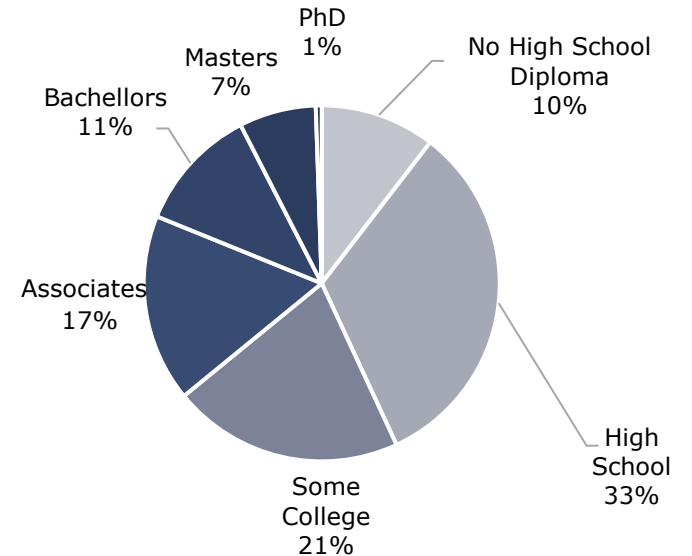
### Population by Sex



### Population by Race

Race	2012	2017	2022
Non-Hispanic White	95.5%	96.8%	89.5%
Black	0.0%	0.0%	1.7%
Native American	0.0%	0.0%	0.0%
Asian	1.4%	0.0%	2.8%
Pacific Islander	0.0%	0.0%	0.0%
Other	0.0%	0.0%	1.9%
Two Or More	1.4%	1.1%	1.6%
Hispanic	0.3%	0.9%	0.9%

### Educational Attainment of Adults



Population over 25 4,857

### Population by Age



### Sources of Population Change

Births	727
- Deaths	-607
+ Migration	-184
<b>Total Change (2010-2019)</b>	<b>-64</b>

### Population with a Disability<sup>1</sup>

	2012	2017	2022
With a Disability	1,346	1,079	1,155

<sup>1</sup> People who reported having a disability when responding to the ACS.

### Public School Enrollment

Year	Kind.	Elem.	Mid.	High	Total
'13/'14	59	322	220	312	913
'14/'15	72	354	222	313	961
'15/'16	67	370	223	294	954
'16/'17	72	347	217	261	897
'17/'18	60	346	191	260	857
'18/'19	60	326	190	273	849
'19/'20	54	301	183	258	796
'20/'21	50	282	185	247	764
'21/'22	50	296	177	248	771
'22/'23	54	295	181	236	766

### Veterans

	2012	2017	2022
Veterans	620	690	515

### Median Age

2012	41.5
2017	40.4
2022	42.6

### Life Expectancy

76.5	
<b>Under 18</b>	19.7%
<b>Over 65</b>	14.0%

Data Sources: US Census Bureau ACS, NH BEA OPD, NH Department of Education, CDC, NH Secretary of State Vital Statistics

Learn more at <https://tinyurl.com/datasnapshot2024>

# Community Profile

## Economic Vitality: Farmington, Strafford County

### Employment

Employment Projections	2015	2025	2035	2045
	1,041	1,100	1,166	1,239

### Labor Force Efficiency



- Lives here, Works elsewhere
- Lives here and Works here
- Lives elsewhere, Works here

### Labor Force



Month	Labor Force	Employed	Unemployment Rate
Jan. 2020	3,647	3,541	2.9%
Apr. 2020	3,599	2,971	17.4%
Apr. 2021	3,639	3,464	4.8%
Apr. 2022	3,614	3,531	2.3%
Apr. 2023	3,601	3,554	1.3%
Jan. 2024	3,553	3,449	2.9%

### Recovery from Initial COVID Disruptions to Labor Force

As of January 2024, the Civilian Labor Force **has not recovered** and the Unemployment rate **has not recovered** to pre-COVID trends. ("Recovered" indicates that each month from Oct. '23 to Jan. '24 was better than the same period in '19-'20)

### Household Incomes

	Median	All	Owners	Renters
2012		\$55,451	\$68,770	\$33,036
2017		\$60,562	\$82,344	\$29,819
2022		\$60,978	\$74,912	\$30,740

Income	All	Owners	Renters
Households	2,911	2,024	887
<\$10K	6.6%	7.0%	5.5%
\$10-15K	8.6%	1.1%	25.7%
\$15-25K	2.3%	2.2%	2.7%
\$25-35K	10.0%	3.8%	24.2%
\$35-50K	16.0%	14.3%	19.8%
\$50-75K	19.8%	21.8%	15.3%
\$75-100K	7.9%	10.2%	2.5%
\$100-150K	17.3%	23.0%	4.2%
> \$150K	11.6%	16.7%	0.0%

### Poverty and Income Inequality

#### Population in households...

Under 100% of Poverty Level	917
Under 200% of Poverty Level	2,150

#### Households with incomes...

Less than full time Min. Wage (\$15,080 per year)	15.1%
---	-------

Less than the Living Wage for 1 Adult: \$53,310 for Strafford County*	43.5%
---	-------

\* Rounding down to income bracket in table

Gini Index	0.43
------------	------

	Lives Here Works	Here Away	Here Here	Away Here
Total		3,067	224	714
Worker Age				
Under 25		695	23	168
30 - 54		1,586	102	346
Over 55		786	99	200
Monthly Income				
< \$1,250		514	38	105
\$1,250 - \$3,333		850	72	223
> \$3,333		1,703	114	386
Sector				
Producing		667	37	150
Trade, Transportation, and Utilities		688	25	91
All others		1,712	162	473

Data Sources: US Census Bureau ACS and LEHD, MIT Living Wage Calculator, NHES LAUS

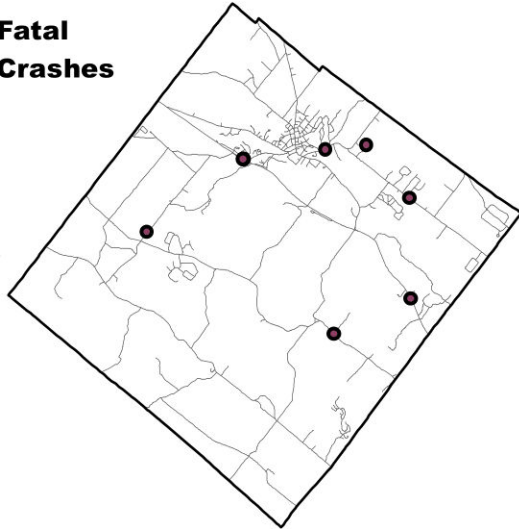
Learn more at <https://tinyurl.com/datasnapshot2024>

# Community Profile

## Livability and Quality of Life: Farmington, Strafford County

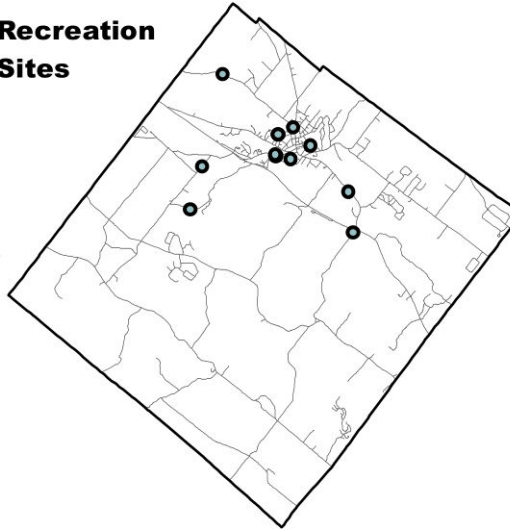
### Traffic Safety (2013-2022)

#### Fatal Crashes



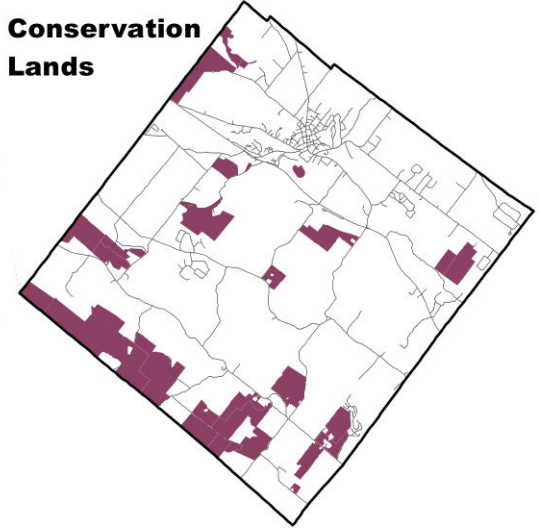
### Recreation Sites

#### Recreation Sites



### Conservation Land

#### Conservation Lands



Square Miles: 3.87

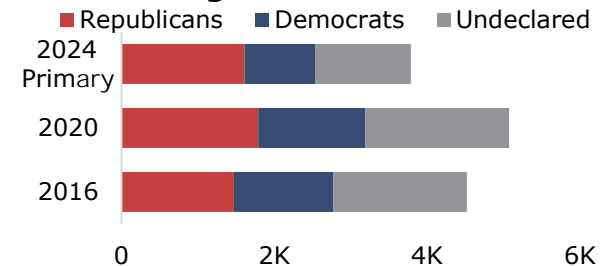
Percent of Total Land: 10%

Year	Fatalities	Serious Injuries
2013	1	0
2014	0	1
2015	1	2
2016	1	4
2017	0	2
2018	1	5
2019	0	4
2020	1	2
2021	1	3
2022	2	13
<b>Total</b>	<b>8</b>	<b>36</b>

Recreation Site Type	Count
Playgrounds	2
Parks	3
Trails/open land	5
Sports	3
Beaches/pools	0
Boat launch/etc.	0
Winter	0
Other	0
<b>Total</b>	<b>13</b>

### Civic Participation

#### Registered Voters



#### Participation in past elections

Year	Registered	Ballots Cast	Rate
2016	4,518	3,181	70%
2020	5,071	3,470	68%

Data Sources: USDOT NHTSA FARS, NHDOS, SRPC POP!, GRANIT, NHSOS.

Learn more at <https://tinyurl.com/datasnapshot2024>

# Community Profile

## Housing: Farmington, Strafford County

### Housing Stock

Occupancy	2012	2017	2022
Total	2,831	3,076	2,977
Occupied	2,646	2,719	2,911
Vacant	185	357	66

### Residential Building Permits

Permit Type	2000-09	2010-19	2020-22
Single Family	438	62	48
Multi-Family	30	18	6
Mobile Home	126	11	25
Other	15	0	0
Total	609	91	79

### Stock by Age

	All	Owner	Renter
Before 1940	588	412	176
1940-1979	1,109	597	512
1980-1999	574	398	176
2000-2009	460	442	18
After 2010	180	175	5

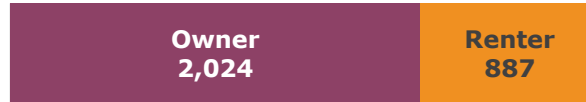
### Units In Structure

Units	Count
1	2,332
2	151
3-9	317
10-50	177
>50	0

### Bedrooms in Unit

Bedrooms	Count
0	95
1	401
2	930
3	1,068
4+	483

### Household Tenure



### Average Household Size

	2012	2017	2022
All	2.55	2.51	2.32
Owner	2.66	2.71	2.55
Renter	2.32	2.1	1.79

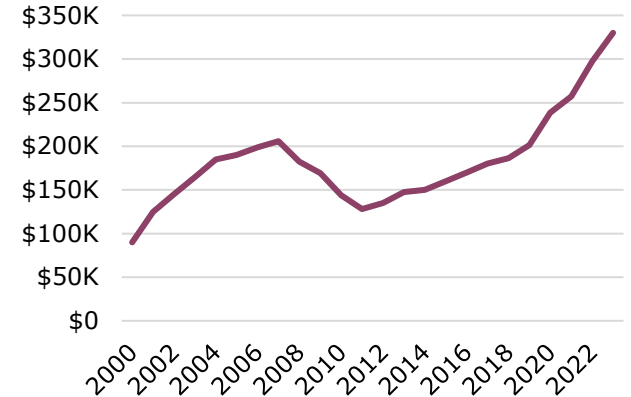
### Household Size and Type

Size	2012	2017	2022
1	703	692	756
2	887	848	1,225
3	463	611	564
4	281	414	286
5+	312	154	80
Family	1,793	1,784	1,960
Married Couple	1,340	1,517	1,510
Other	453	267	450
Non-Family	853	935	951
Live Alone	703	692	756
Not Alone	150	243	195

### Property Tax Rates

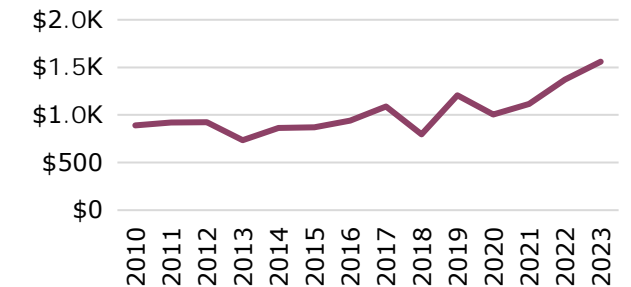
	2010	2020	2022
Rate per \$1,000	\$20.24	\$22.92	\$24.18

### Median Purchase Price



**In 2023** the median purchase price was \$330,000 and a 10% down payment was \$33,000. The monthly payment for a home of this price would be \$2,810

### Median Rent



### Housing Market Status

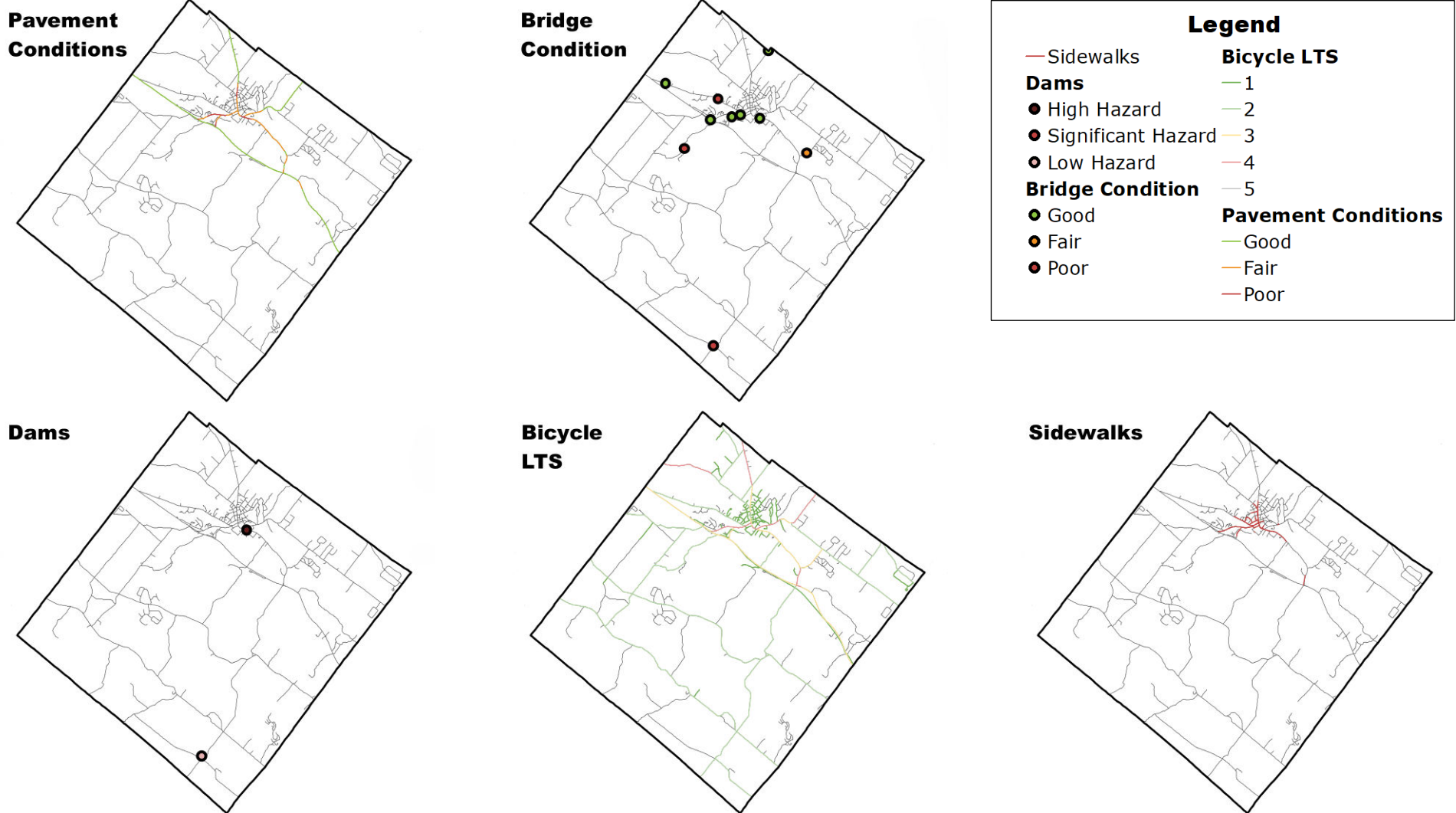
Single Family Home Sales 2023	
Closed Sales	74 total in 2023
Days on Market	Min=5(Aug-23)
Months Supply	Min=0.6(Apr-23)

Data Sources: US Census Bureau ACS, SRPC Building Permit Database, NHHFA, NH Public Finance Consortium, NH Association of Realtors

Learn more at <https://tinyurl.com/datasnapshot2024>

# Community Profile

## Mobility and Accessibility: Farmington, Strafford County



Served by...	
Amtrak	No
COAST	Yes
Wildcat	No
ACT Providers	Yes

Legislative Class of Roads	
1-4 (State and Federal)	41.76
5 (Local)	52.33
6 (Unmaintained)	11.88
<b>Total</b>	<b>105.97</b>

Bike and Pedestrian Infrastructure Miles	
Low BLTS (1-2)	50.70
High BLTS (3-5)	14.36
<b>Sidewalks</b>	<b>4.69</b>

Bridges and Dams	
Total Bridges	10
Red List Bridges	6
Total Dams	12
High Hazard Dams	1

Data Sources: NHDOT, NHDES, Amtrak, COAST, UNH, SRPC BLTS, SRPC Sidewalks

Learn more at <https://tinyurl.com/datasnapshot2024>

# Community Profile

## Resiliency: Farmington, Strafford County

### Contamination Sites

Open Remediation	23
Closed Remediation	47
<b>Total Sites</b>	<b>70</b>

### Hazard Mitigation Plans

Status	Expired
Expiration Date	08/28/23

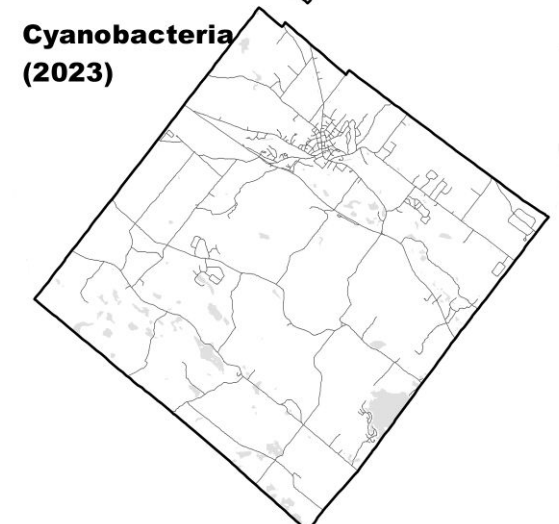
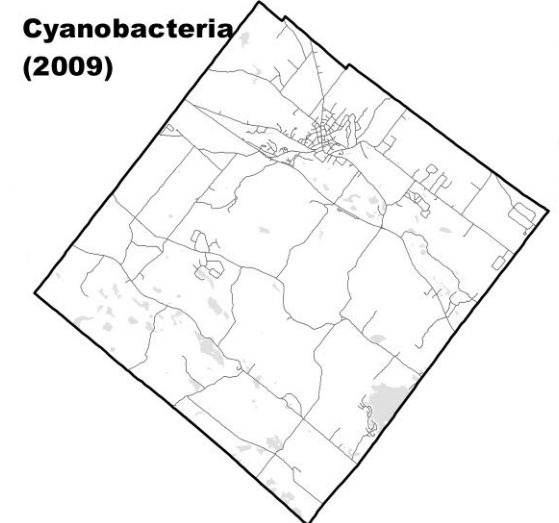
### USDA Plant Hardiness

Zones in 2012	Mostly 5A, Some 5B
Average Extreme Min. Temp. Tolerated	-15 to -10
Zones in 2023	Mostly 6A, Some 5B
Average Extreme Min. Temp. Tolerated	-10 to -5

### FEMA Risk Ratings

Risk Type	Rating (Summary of Census Tracts)
Coastal Flooding	No Rating
Riverine Flooding	Relatively Low
Cold Wave	Relatively Low
Heat Wave	Relatively Low
Tornado	Relatively Low
Hurricane & Tropical Storms	Relatively Low
Hail	Very Low
Landslide	Relatively Low to Moderate
Ice Storm	Relatively Moderate
Winter Weather	Relatively Low
Drought	Relatively Low
Wildfire	Relatively Low
Lightning	Relatively Moderate to High
Strong Winds	Relatively Moderate

### Cyanobacteria Alert Days



### Legend

Cyanobacteria (Since 2009)	Cyanobacteria (2023)
0 Days	0 Days
1 - 24 Days	1 - 24 Days
25 - 49 Days	25 - 49 Days
50 - 99 Days	> 50 Days
100 - 199 Days	
> 200 Days	

Data Sources: NHDES, USDA, FEMA

Learn more at <https://tinyurl.com/datasnapshot2024>