

DOVER COMMUNITY PROFILE

SRPC FISCAL
YEAR
'24
DATA SNAPSHOT

ACCEPTED:

STRAFFORD
Regional Planning Commission

SRPC Regional Data Snapshot

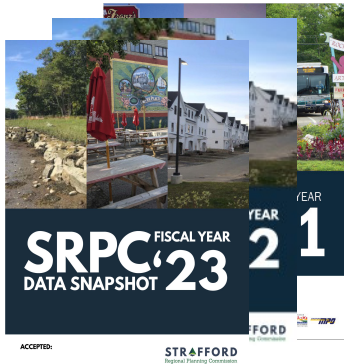
This document is a component of the SRPC Regional Data Snapshot.

SRPC conducts region-wide analysis of a number of data metrics each year for different projects and plans. The Regional Data Snapshot was a new document in 2021, and updated in April of each year, that contains many of these analyses in one place. The Data Snapshot covers demographics, economic vitality, livability and quality of life, mobility and accessibility, and resiliency. The Data Snapshot will be updated every year and additional metrics will be included as they are developed.

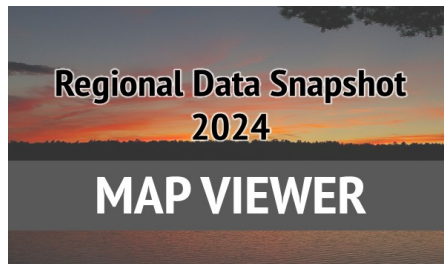
In addition to the data metrics that are tracked annually, SRPC is also tracking several COVID-19 specific metrics to track the region's recovery from the pandemic in the Regional COVID-19 Data Snapshot.

<http://strafford.org/measure/data-snapshot/>

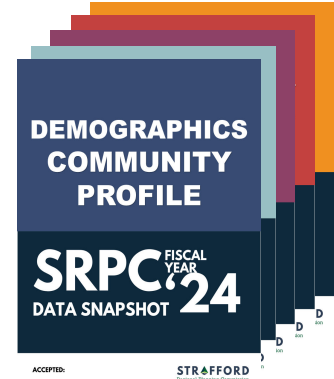
Other Documents



Past Editions



Interactive Map Viewer



Community Profiles

Staff



Rachel Dewey



Stephen Geis



Mark Davie



Jackson Rand

Future Editions

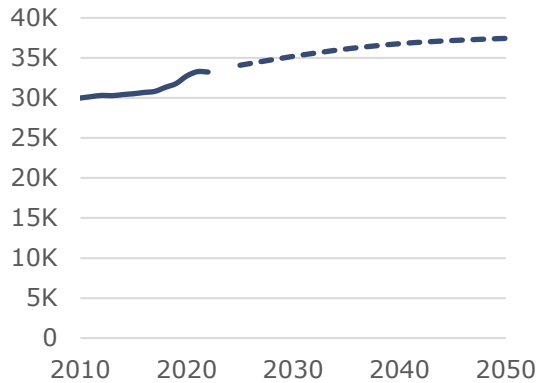
Future editions of the Data Snapshot will include the following changes:

- Expand on topics including public health, water resources, recreation, and more.
- An appendix including data tables.
- An interactive data viewer for non-map data.

Community Profile

Demographics: Dover, Strafford County

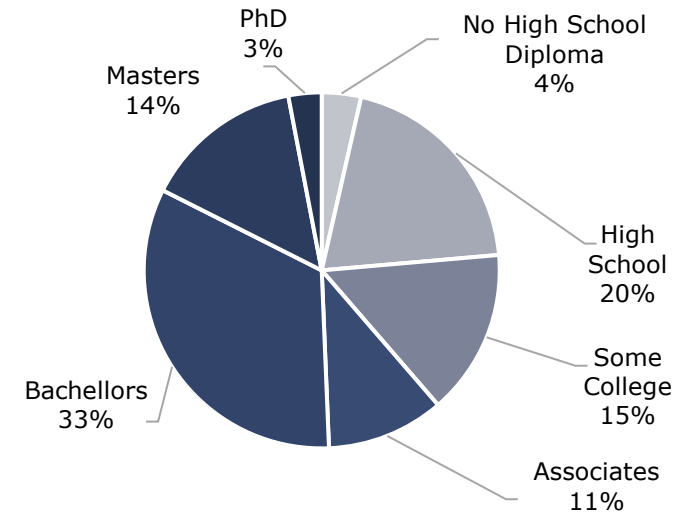
Population Trends and Projections



Population by Sex



Educational Attainment of Adults

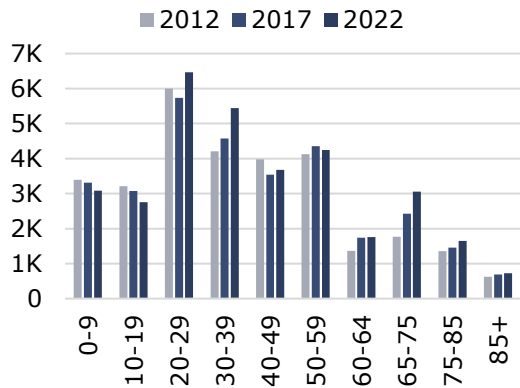


Population by Race

	2012	2017	2022
Non-Hispanic White	89.8%	86.6%	84.0%
Black	0.9%	1.0%	1.1%
Native American	0.2%	0.1%	0.0%
Asian	3.3%	4.9%	3.8%
Pacific Islander	0.0%	0.0%	0.0%
Other	0.1%	0.0%	0.4%
Two Or More	2.4%	2.6%	3.3%
Hispanic	1.0%	2.2%	4.0%

Year	2010	2020	2022	2050
Population	29,987	32,741	33,234	37,436

Population by Age



Sources of Population Change

Births	3,282
- Deaths	-3,207
+ Migration	2,679
Total Change (2010-2019)	2,754

Population over 25: 23,709

Population with a Disability¹

	2012	2017	2022
With a Disability	3,302	3,362	3,772

¹ People who reported having a disability when responding to the ACS.

Public School Enrollment

Year	Kind.	Elem.	Mid.	High	Total
'13/'14	310	1,510	838	1,028	3,686
'14/'15	316	1,558	849	1,022	3,745
'15/'16	315	1,535	861	1,057	3,768
'16/'17	284	1,490	904	1,055	3,733
'17/'18	285	1,462	955	1,087	3,789
'18/'19	233	1,464	908	1,156	3,761
'19/'20	264	1,361	885	1,204	3,714
'20/'21	193	1,335	834	1,244	3,606
'21/'22	247	1,238	856	1,242	3,583
'22/'23	249	1,244	814	1,199	3,506

Veterans

	2012	2017	2022
Veterans	2,531	2,115	1,569

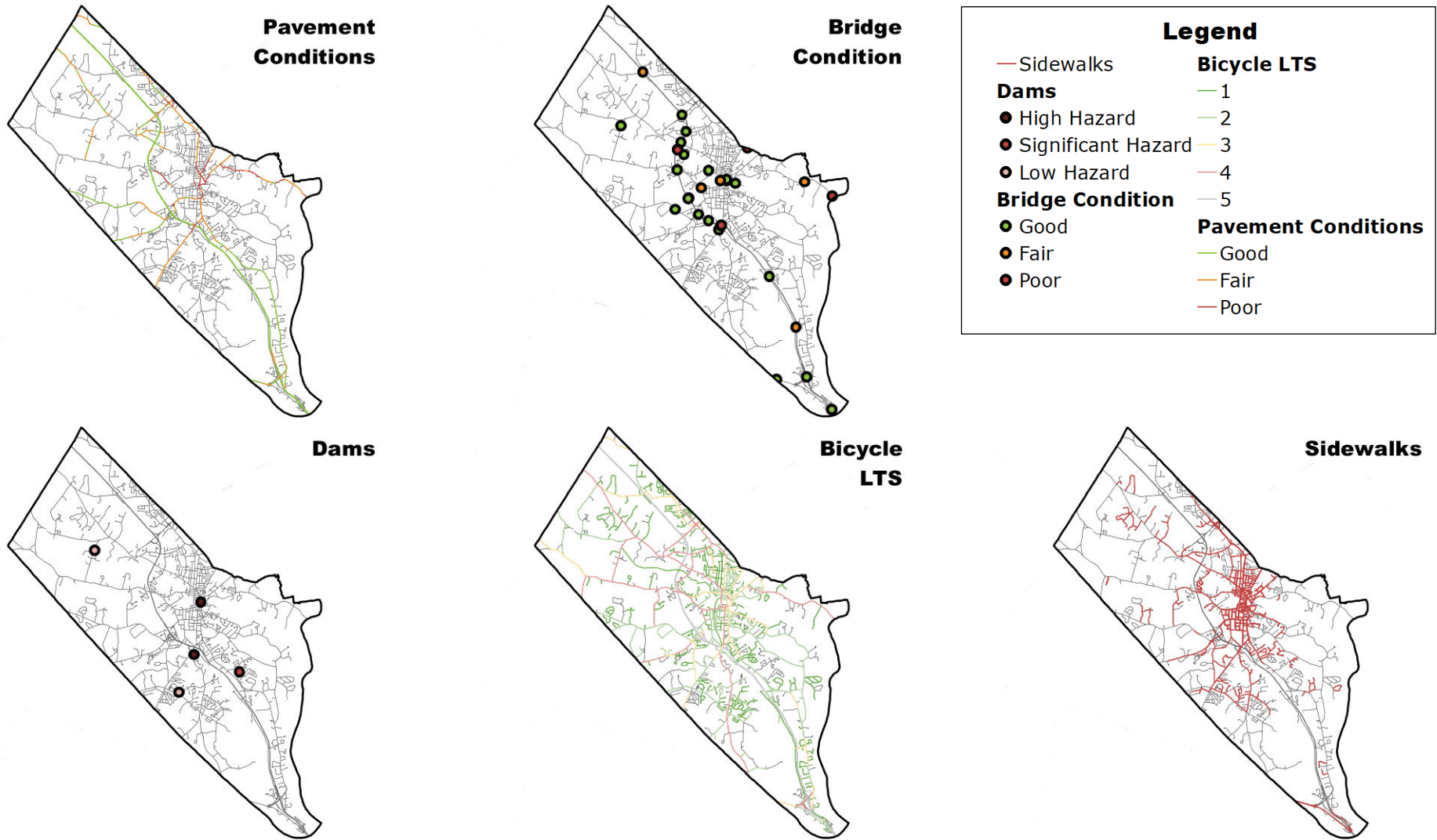
Year	Median Age	Life Expectancy	75.5 - 80.9
2012	35.6		
2017	36.6	Under 18	17.0%
2022	37.2	Over 65	16.5%

Data Sources: US Census Bureau ACS, NH BEA OPD, NH Department of Education, CDC, NH Secretary of State Vital Statistics

Learn more at <https://tinyurl.com/datasnapshot2024>

Community Profile

Mobility and Accessibility: Dover, Strafford County



Served by...	
Amtrak	Yes
COAST	Yes
Wildcat	Yes
ACT Providers	Yes

Legislative Class of Roads	
1-4 (State and Federal)	85.58
5 (Local)	123.64
6 (Unmaintained)	5.18
Total	214.40

Bike and Pedestrian Infrastructure Miles	
Low BLTS (1-2)	101.45
High BLTS (3-5)	45.05
Sidewalks	79.35

Bridges and Dams	
Total Bridges	32
Red List Bridges	7
Total Dams	27
High Hazard Dams	2

Data Sources: NHDOT, NHDES, Amtrak, COAST, UNH, SRPC BLTS, SRPC Sidewalks

Learn more at <https://tinyurl.com/datasnapshot2024>

Community Profile

Economic Vitality: Dover, Strafford County

Employment

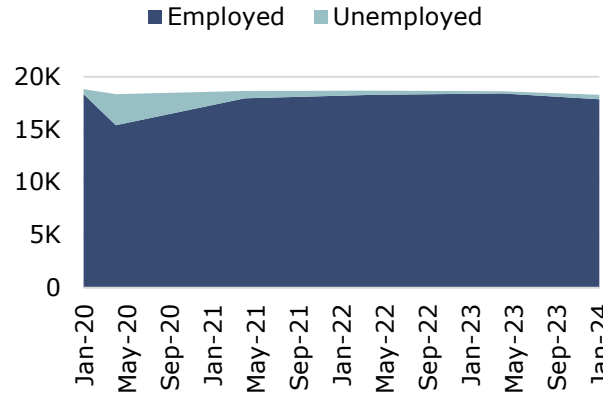
Employment Projections	2015	2025	2035	2045
	18,192	19,581	21,212	23,029

Labor Force Efficiency



- Lives here, Works elsewhere
- Lives here and Works here
- Lives elsewhere, Works here

Labor Force



Month	Labor Force	Employed	Unemployment Rate
Jan. 2020	18,829	18,356	2.5%
Apr. 2020	18,361	15,400	16.1%
Apr. 2021	18,643	17,959	3.7%
Apr. 2022	18,685	18,304	2.0%
Apr. 2023	18,614	18,423	1.0%
Jan. 2024	18,301	17,880	2.3%

Household Incomes

	Median	All	Owners	Renters
2012		\$55,890	\$82,242	\$37,533
2017		\$65,922	\$91,753	\$46,839
2022		\$90,844	\$128,734	\$63,988

Income	All	Owners	Renters
Households	14,606	7,585	7,021
<\$10K	2.3%	0.9%	3.7%
\$10-15K	3.9%	1.2%	6.8%
\$15-25K	4.3%	2.8%	6.0%
\$25-35K	7.2%	5.9%	8.6%
\$35-50K	9.5%	4.3%	15.1%
\$50-75K	14.9%	10.9%	19.2%
\$75-100K	12.5%	10.8%	14.3%
\$100-150K	16.7%	21.0%	12.0%
> \$150K	28.9%	42.2%	14.5%

	Lives Here Works	Here Away	Here Here	Away Here
Total	12,560	3,492	14,360	
Worker Age				
Under 25	3,152	886	3,081	
30 - 54	6,575	1,800	7,696	
Over 55	2,833	806	3,583	
Monthly Income				
< \$1,250	1,975	718	2,341	
\$1,250 - \$3,333	2,856	887	3,383	
> \$3,333	7,729	1,887	8,636	
Sector				
Producing	1,932	291	1,285	
Trade, Transportation, and Utilities	2,463	470	2,210	
All others	8,165	2,731	10,865	

Recovery from Initial COVID Disruptions to Labor Force
 As of January 2024, the Civilian Labor Force **has not recovered** and the Unemployment rate **has not recovered** to pre-COVID trends. ("Recovered" indicates that each month from Oct. '23 to Jan. '24 was better than the same period in '19-'20)

Poverty and Income Inequality

Population in households...

Under 100% of Poverty Level	2,422
Under 200% of Poverty Level	5,188

Households with incomes...

Less than full time Min. Wage (\$15,080 per year)	6.1%
---	------

Less than the Living Wage for 1 Adult: \$53,310 for Strafford County*	27.1%
---	-------

* Rounding down to income bracket in table

Gini Index	0.43
-------------------	------

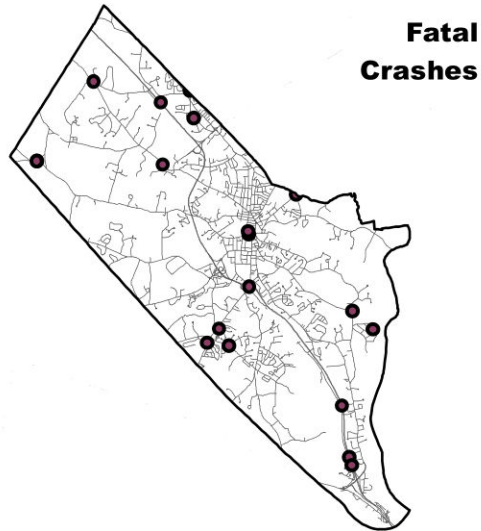
Data Sources: US Census Bureau ACS and LEHD, MIT Living Wage Calculator, NHES LAUS

Learn more at <https://tinyurl.com/datasnapshot2024>

Community Profile

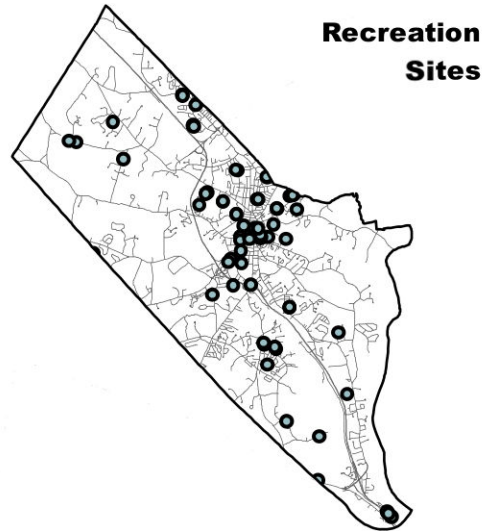
Livability and Quality of Life: Dover, Strafford County

Traffic Safety (2013-2022)



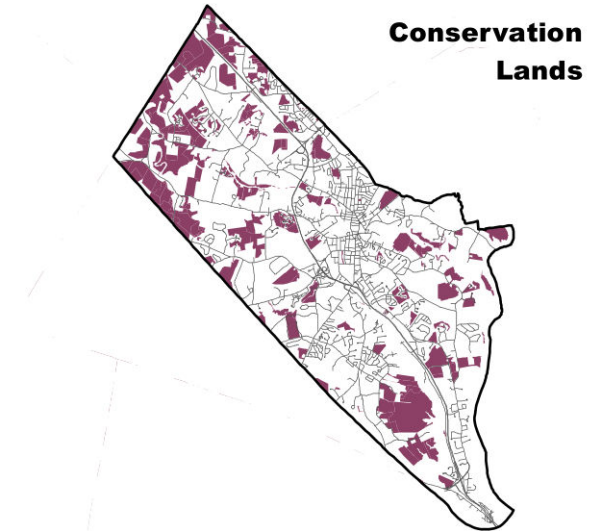
Year	Fatalities	Serious Injuries
2013	3	6
2014	2	4
2015	0	10
2016	2	0
2017	1	2
2018	4	16
2019	0	8
2020	0	7
2021	3	13
2022	4	19
Total	19	85

Recreation Sites



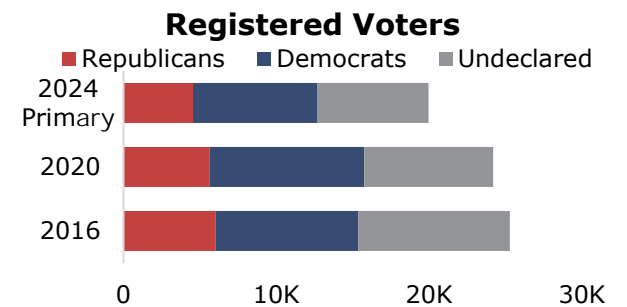
Recreation Site Type	Count
Playgrounds	13
Parks	10
Trails/open land	16
Sports	16
Beaches/pools	2
Boat launch/etc.	4
Winter	4
Other	2
Total	67

Conservation Land



Square Miles: 5.69
Percent of Total Land: 20%

Civic Participation



Participation in past elections

Year	Registered	Ballots Cast	Rate
2016	25,283	17,678	70%
2020	24,193	19,453	80%

Data Sources: USDOT NHTSA FARS, NHDOS, SRPC POP!, GRANIT, NHSOS.

Learn more at <https://tinyurl.com/datasnapshot2024>

Community Profile

Housing: Dover, Strafford County

Housing Stock

Occupancy	2012	2017	2022
Total	13,252	13,895	15,245
Occupied	12,512	13,194	14,606
Vacant	740	701	639

Residential Building Permits

Permit Type	2000-09	2010-19	2020-22
Single Family	802	516	103
Multi-Family	452	611	177
Mobile Home	63	11	4
Other	62	0	3
Total	1,379	1,138	287

Stock by Age

	All	Owner	Renter
Before 1940	3,770	1,555	2,215
1940-1979	4,228	2,166	2,062
1980-1999	3,728	2,250	1,478
2000-2009	1,660	912	748
After 2010	1,220	702	518

Units In Structure

Units	Count
1	7,822
2	1,110
3-9	3,187
10-50	2,382
>50	744

Bedrooms in Unit

Bedrooms	Count
0	517
1	2,319
2	5,274
3	4,424
4+	2,711

Household Tenure



Average Household Size

	2012	2017	2022
All	2.32	2.27	2.18
Owner	2.59	2.45	2.42
Renter	2.03	2.08	1.92

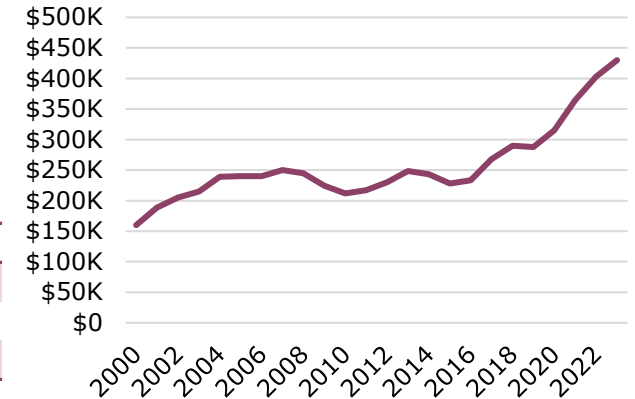
Household Size and Type

Size	2012	2017	2022
1	3,761	3,837	4,682
2	4,711	5,057	5,440
3	1,721	2,038	2,167
4	1,776	1,546	1,803
5+	543	716	514
Family	7,116	7,487	8,060
Married Couple	5,250	5,689	6,547
Other	1,866	1,798	1,513
Non-Family	5,396	5,707	6,546
Live Alone	3,761	3,837	4,682
Not Alone	1,635	1,870	1,864

Property Tax Rates

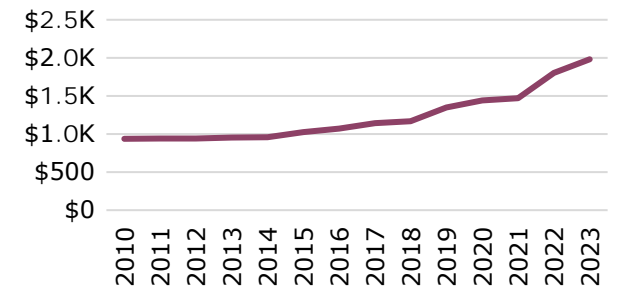
	2010	2020	2022
Rate per \$1,000	\$23.75	\$24.85	\$19.84

Median Purchase Price



In 2023 the median purchase price was \$430,000 and a 10% down payment was \$43,000 . The monthly payment for a home of this price would be \$3,662

Median Rent



Housing Market Status

Single Family Home Sales 2023	
Closed Sales	196 total in 2023
Days on Market	Min=8(Jul-23)
Months Supply	Min=1(Jan-23)

Data Sources: US Census Bureau ACS, SRPC Building Permit Database, NHHFA, NH Public Finance Consortium, NH Association of Realtors

Learn more at <https://tinyurl.com/datasnapshot2024>

Community Profile

Resiliency: Dover, Strafford County

Contamination Sites

Open Remediation	167
Closed Remediation	212
Total Sites	379

Hazard Mitigation Plans

Status	Expired
Expiration Date	03/29/23

USDA Plant Hardiness

Zones in 2012	5B
Average Extreme Min. Temp. Tolerated	-15 to -10

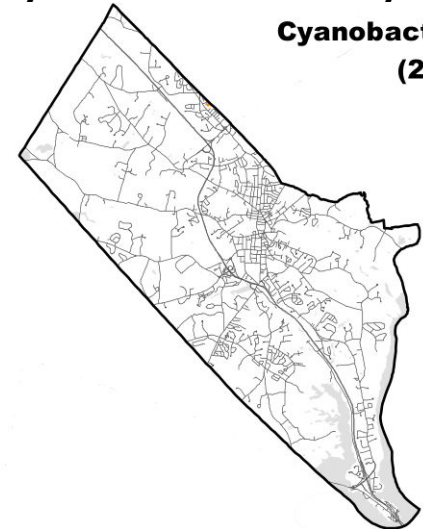
Zones in 2023	6A
Average Extreme Min. Temp. Tolerated	-10 to -5

FEMA Risk Ratings

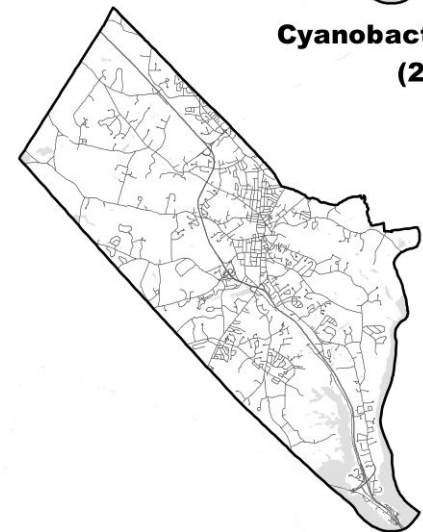
Risk Type	Rating (Summary of Census Tracts)
Coastal Flooding	Very Low to Relatively Low
Riverine Flooding	Very Low to Relatively Low
Cold Wave	Relatively Low to Moderate
Heat Wave	Relatively Low
Tornado	Very Low to Relatively Low
Hurricane & Tropical Storms	Relatively Low to Moderate
Hail	Very Low to Relatively Low
Landslide	Relatively Moderate
Ice Storm	Relatively Low to High
Winter Weather	Relatively Low to Moderate
Drought	Relatively Low
Wildfire	Very Low to Relatively Low
Lightning	Relatively High
Strong Winds	Relatively Low to Relatively High

Cyanobacteria Alert Days

Cyanobacteria (2009)



Cyanobacteria (2023)



Legend

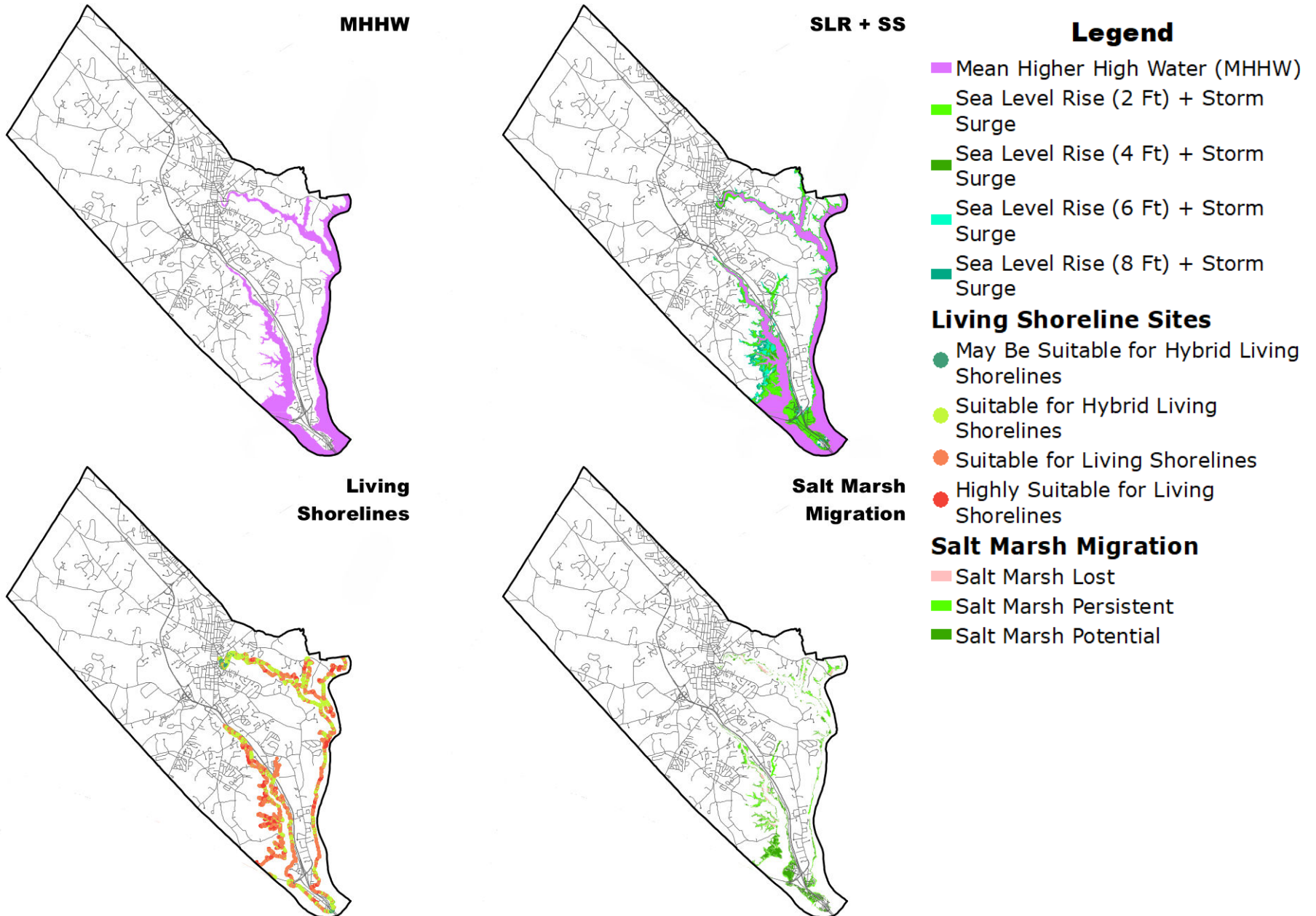
Cyanobacteria (Since 2009)	Cyanobacteria (2023)
0 Days	0 Days
1 - 24 Days	1 - 24 Days
25 - 49 Days	25 - 49 Days
50 - 99 Days	> 50 Days
100 - 199 Days	
> 200 Days	

Data Sources: NHDES, USDA, FEMA

Learn more at <https://tinyurl.com/datasnapshot2024>

Community Profile

Coastal Resiliency: Dover, Strafford County



Data Source: NHDES, UNH GRANIT

Learn more at <https://tinyurl.com/datasnapshot2024>