

COASTAL RESILIENCY COMMUNITY PROFILE

SRPC FISCAL
YEAR
'24
DATA SNAPSHOT

ACCEPTED:

STRAFFORD
Regional Planning Commission

SRPC Regional Data Snapshot

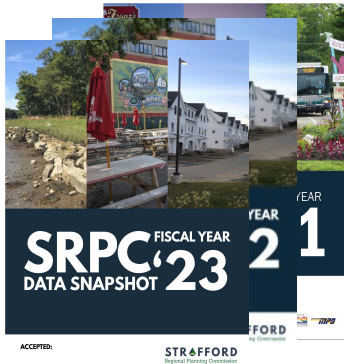
This document is a component of the SRPC Regional Data Snapshot.

SRPC conducts region-wide analysis of a number of data metrics each year for different projects and plans. The Regional Data Snapshot was a new document in 2021, and updated in April of each year, that contains many of these analyses in one place. The Data Snapshot covers demographics, economic vitality, livability and quality of life, mobility and accessibility, and resiliency. The Data Snapshot will be updated every year and additional metrics will be included as they are developed.

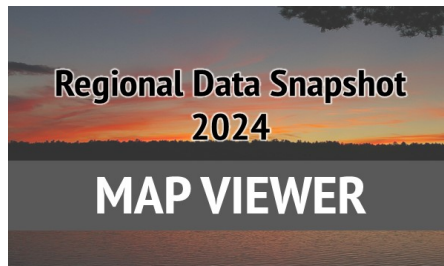
In addition to the data metrics that are tracked annually, SRPC is also tracking several COVID-19 specific metrics to track the region's recovery from the pandemic in the Regional COVID-19 Data Snapshot.

<http://strafford.org/measure/data-snapshot/>

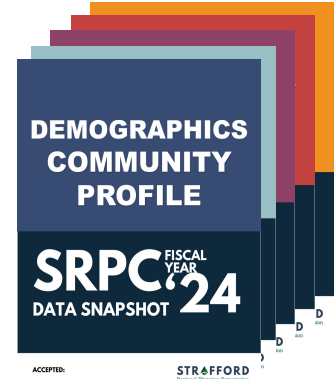
Other Documents



Past Editions



Interactive Map Viewer



Community Profiles

Staff



Rachel Dewey



Stephen Geis



Mark Davie



Jackson Rand

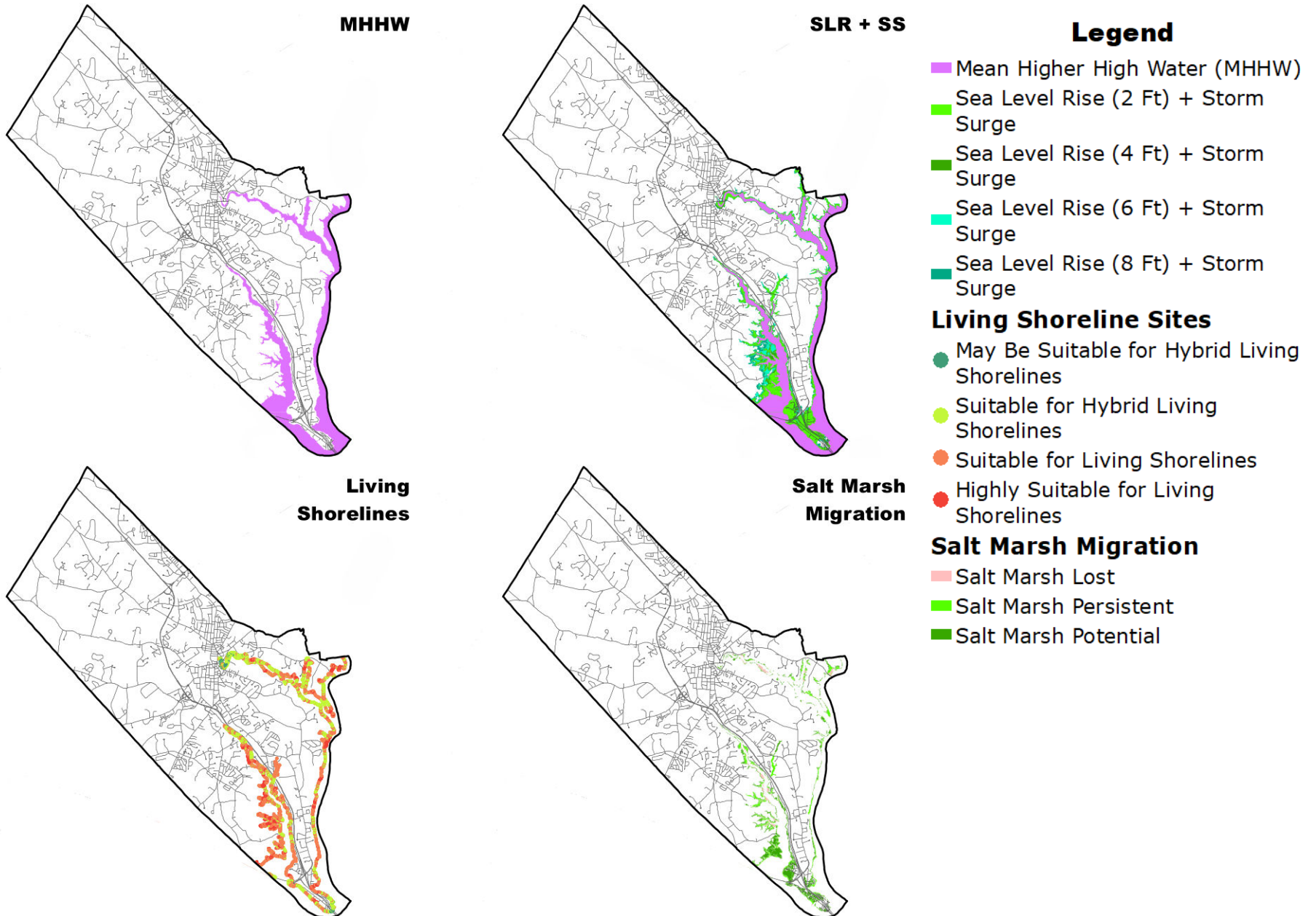
Future Editions

Future editions of the Data Snapshot will include the following changes:

- Expand on topics including public health, water resources, recreation, and more.
- An appendix including data tables.
- An interactive data viewer for non-map data.

Community Profile

Coastal Resiliency: Dover, Strafford County

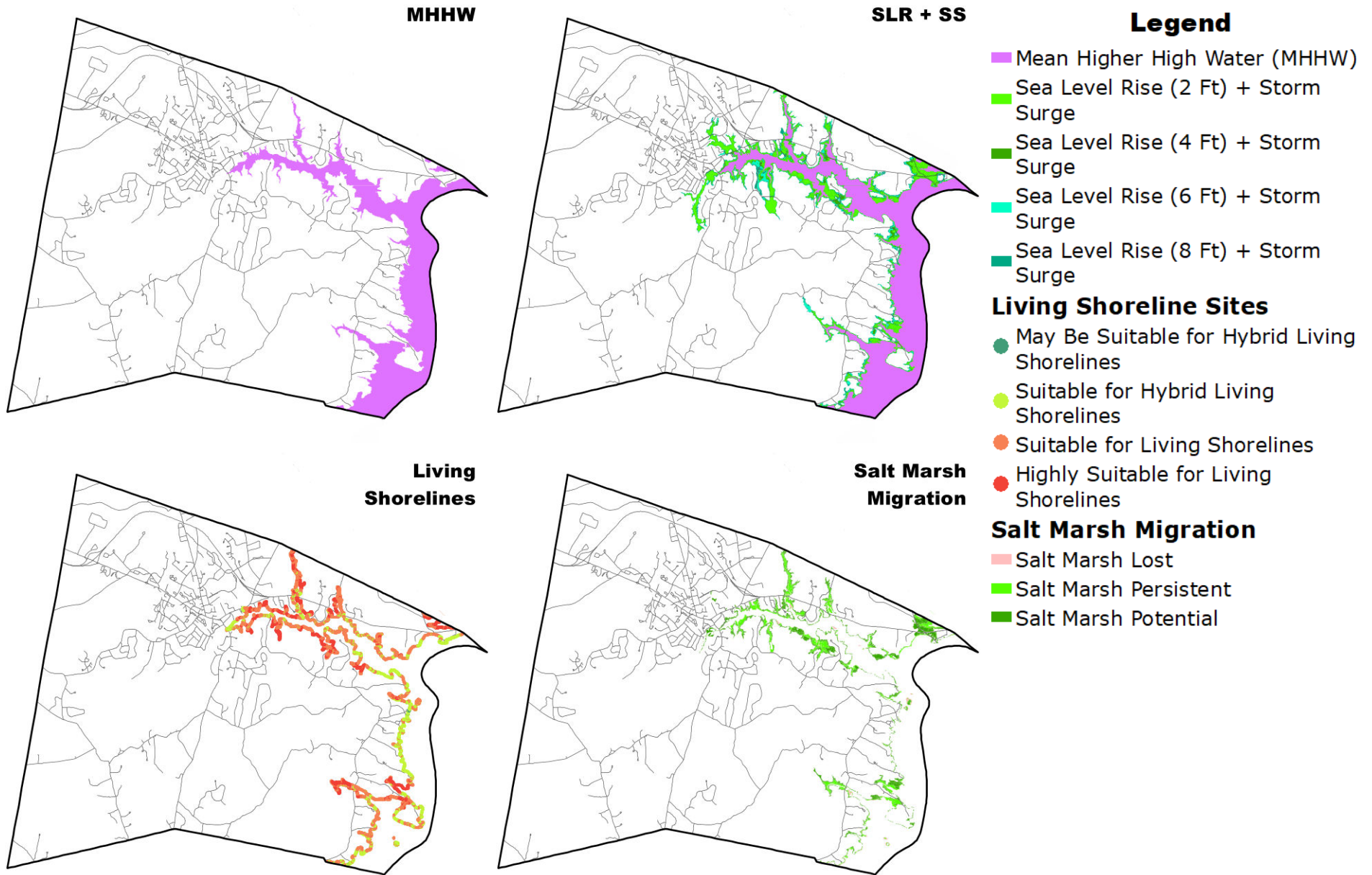


Data Source: NHDES, UNH GRANIT

Learn more at <https://tinyurl.com/datasnapshot2024>

Community Profile

Coastal Resiliency: Durham, Strafford County

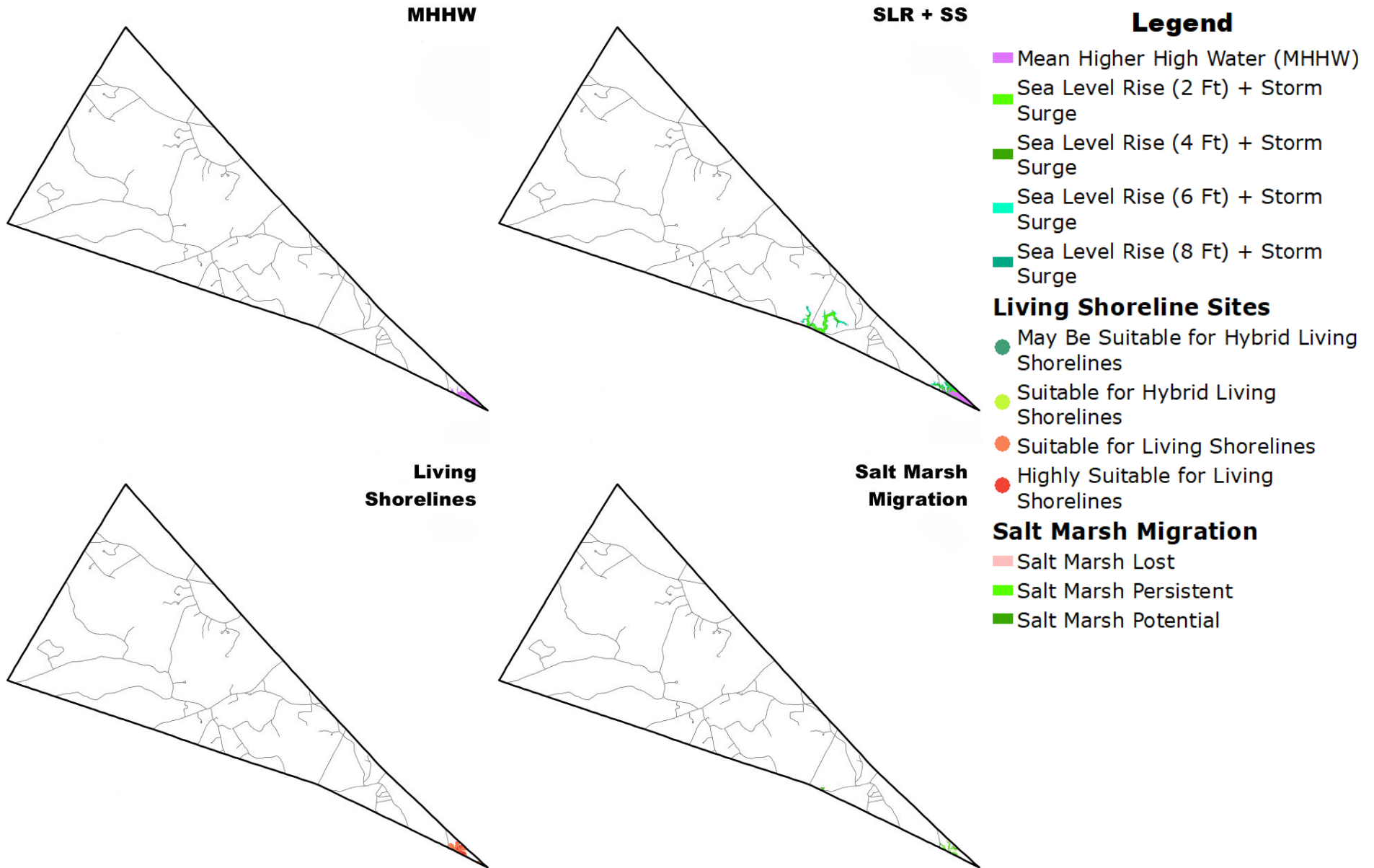


Data Source: NHDES, UNH GRANIT

Learn more at <https://tinyurl.com/datasnapshot2024>

Community Profile

Coastal Resiliency: Madbury, Strafford County



Data Source: NHDES, UNH GRANIT

Learn more at <https://tinyurl.com/datasnapshot2024>

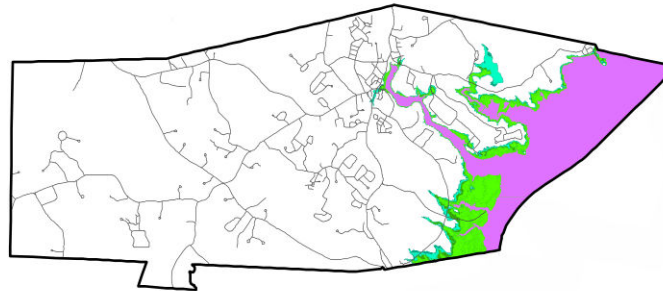
Community Profile

Coastal Resiliency: Newmarket, Rockingham County

MHHW



SLR + SS



Legend

- Mean Higher High Water (MHHW)
- Sea Level Rise (2 Ft) + Storm Surge
- Sea Level Rise (4 Ft) + Storm Surge
- Sea Level Rise (6 Ft) + Storm Surge
- Sea Level Rise (8 Ft) + Storm Surge

Living Shoreline Sites

- May Be Suitable for Hybrid Living Shorelines
- Suitable for Hybrid Living Shorelines
- Suitable for Living Shorelines
- Highly Suitable for Living Shorelines

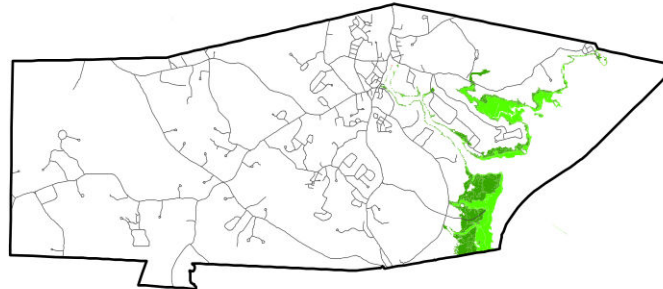
Salt Marsh Migration

- Salt Marsh Lost
- Salt Marsh Persistent
- Salt Marsh Potential

Living Shorelines



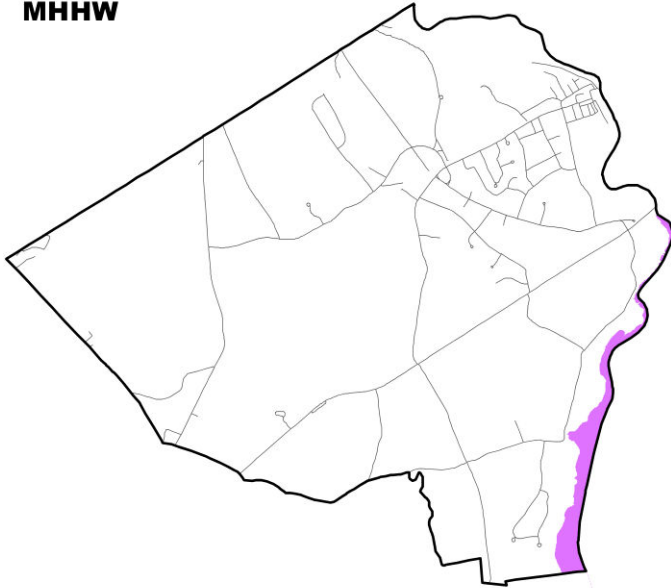
Salt Marsh Migration



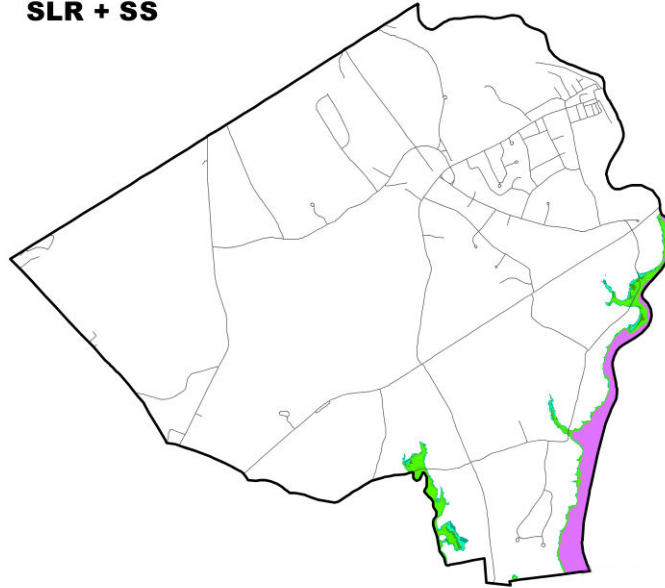
Community Profile

Coastal Resiliency: Rollinsford, Strafford County

MHHW



SLR + SS



Legend

- Mean Higher High Water (MHHW)
- Sea Level Rise (2 Ft) + Storm Surge
- Sea Level Rise (4 Ft) + Storm Surge
- Sea Level Rise (6 Ft) + Storm Surge
- Sea Level Rise (8 Ft) + Storm Surge

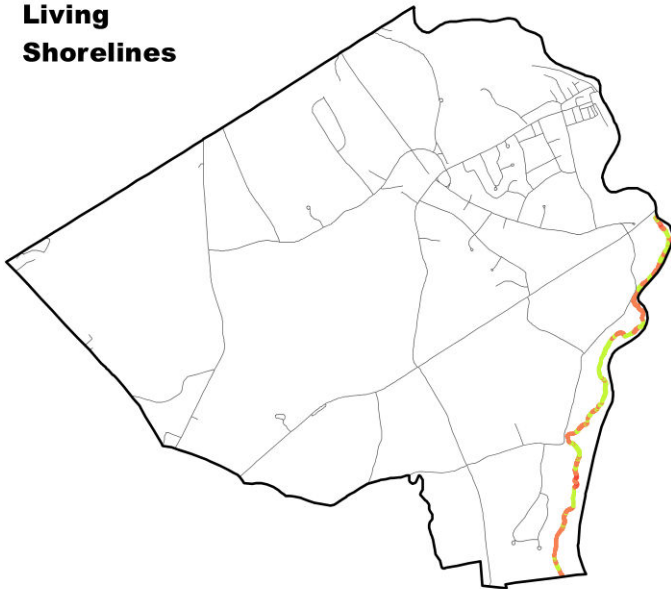
Living Shoreline Sites

- May Be Suitable for Hybrid Living Shorelines
- Suitable for Hybrid Living Shorelines
- Suitable for Living Shorelines
- Highly Suitable for Living Shorelines

Salt Marsh Migration

- Salt Marsh Lost
- Salt Marsh Persistent
- Salt Marsh Potential

Living Shorelines



Salt Marsh Migration

