

# Rochester, New Hampshire: Water Resources



Prepared by  
**Strafford Regional  
 Planning Commission**  
 150 Wakefield Street #12  
 Rochester, NH 03867  
 603-994-3500

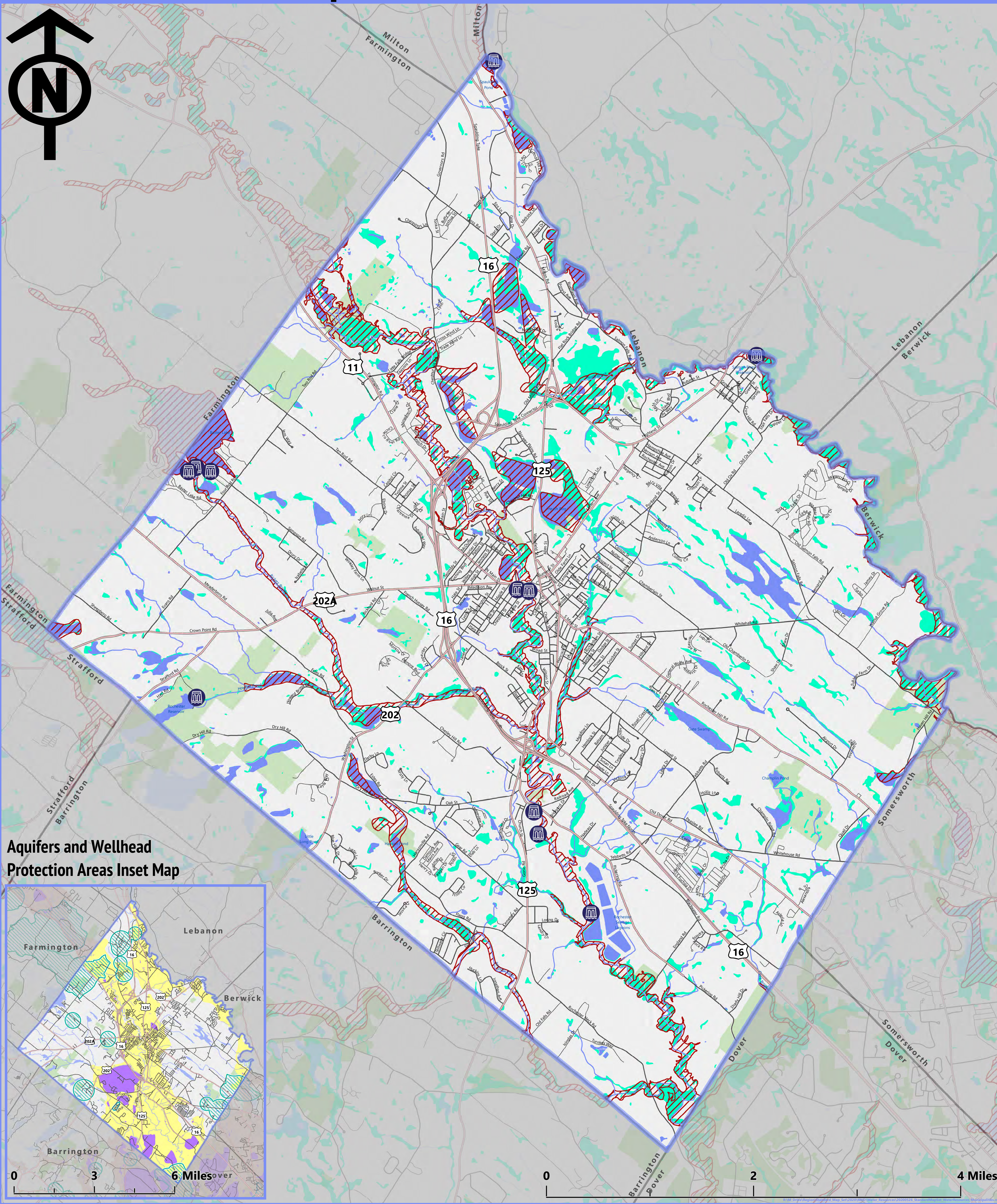
Author: Jackson Rand  
 Date: 11/17/2021

## Legend

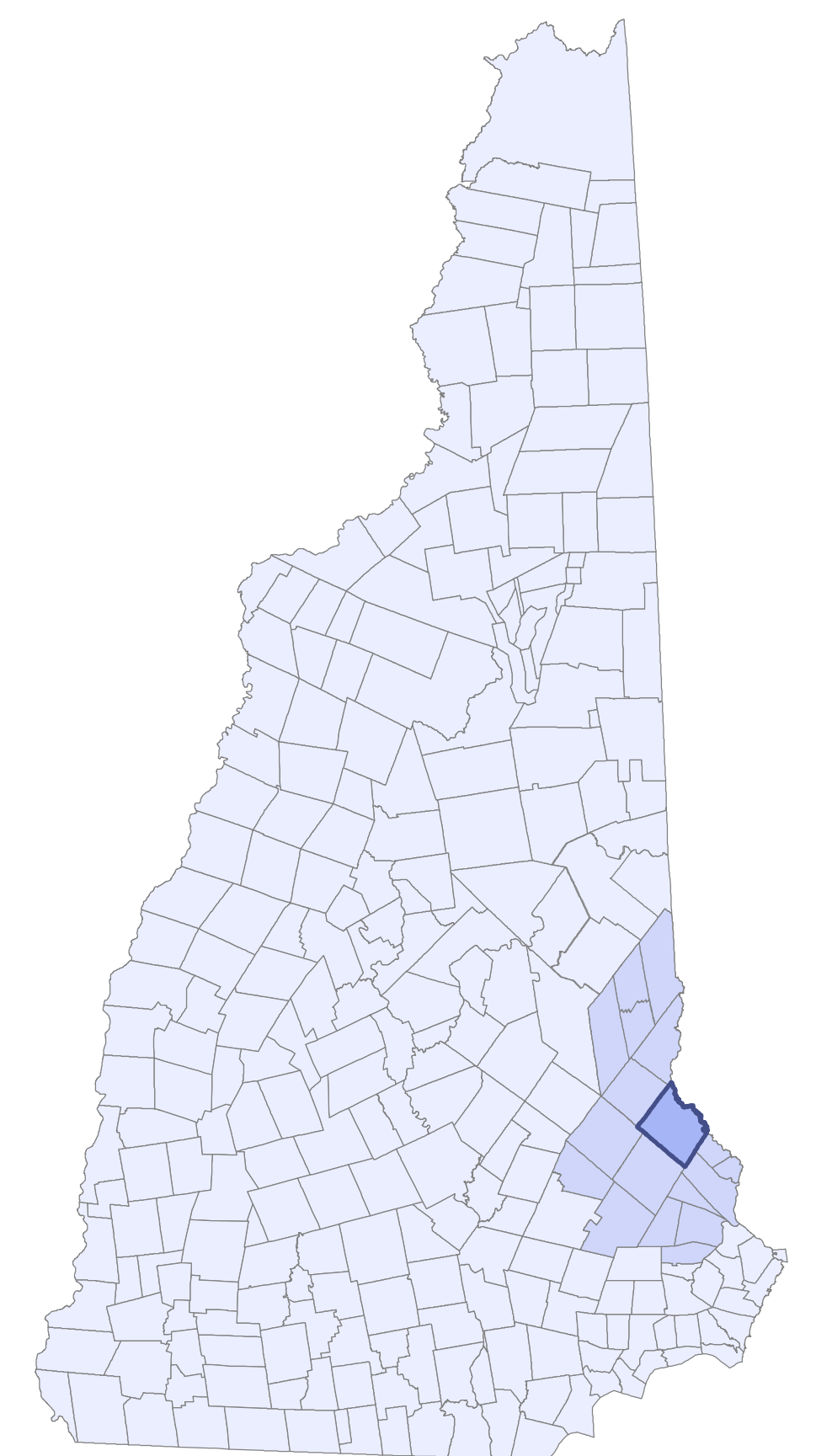
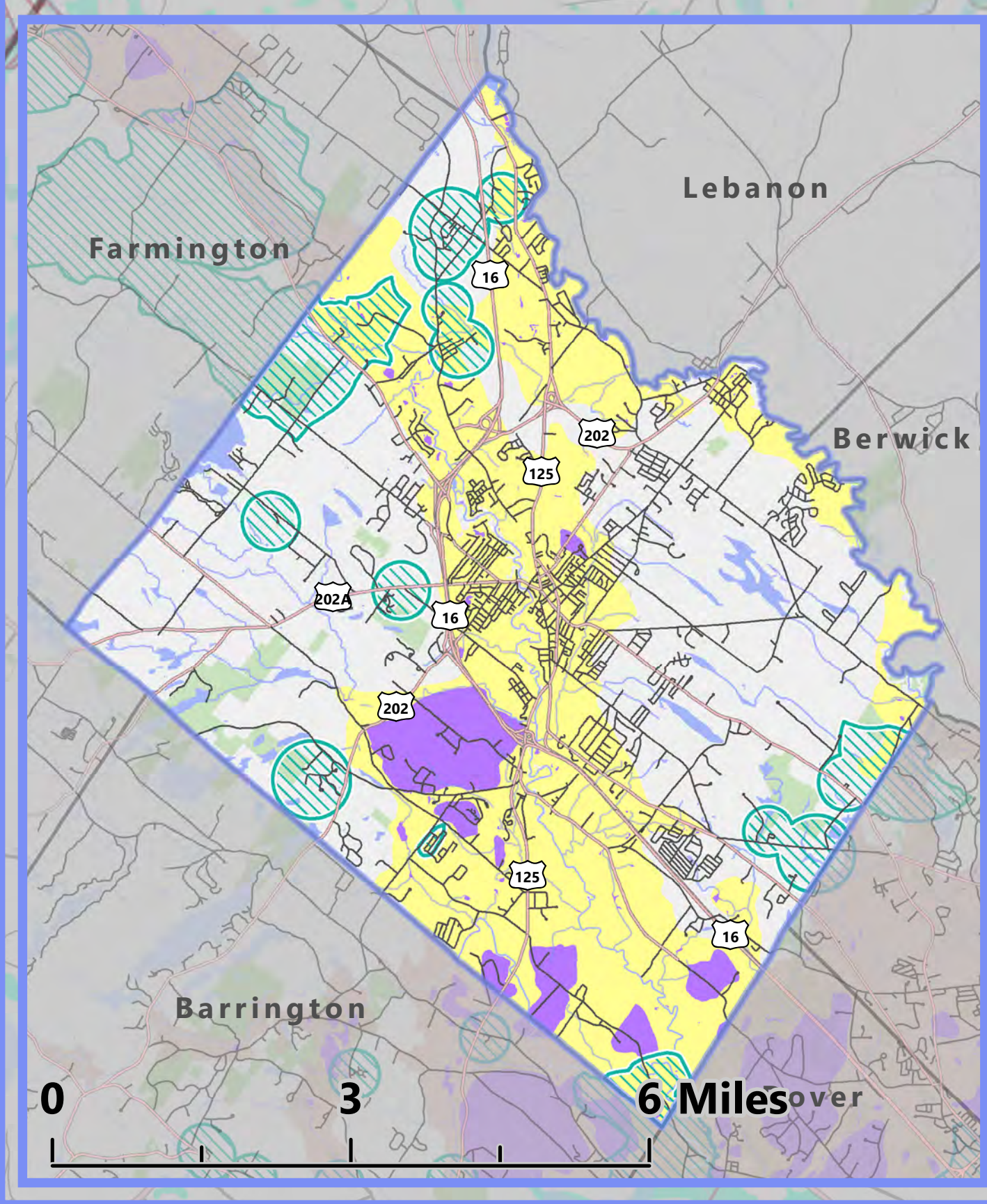
- Dams
- Rivers and Streams
- FEMA 100 Year Flood Zone
- Lakes and Ponds
- Wetlands
- Roads**
- State Roadways
- Local
- Private or Not-Maintained

## Inset Map Legend

- Wellhead Protection Areas
- Aquifers
- Stratified Drift Aquifers



**Aquifers and Wellhead Protection Areas Inset Map**



Base features from NH GRANIT database. Digital data in NH GRANIT represent the efforts of the contributing agencies to record information from the cited source materials. Earth Systems Research Center (ESRC), under contract to the Office of Energy and Planning (OEP), and in consultation with cooperating agencies, maintains a continuing program to identify and correct errors in these data. Neither OEP nor ESRC make any claim as to the validity or reliability or to any implied uses of these data. Data should be used for planning purposes only. Data were derived from various sources and were updated at different timeframes, with varying levels of accuracy. Please notify SRPC of any errors or omissions. Base imagery from Bing and ESRI.