

# Rochester Sidewalk, Crosswalk, and Curb Ramp Inventory

## Accessibility of Curb Ramps



### SRPC Information

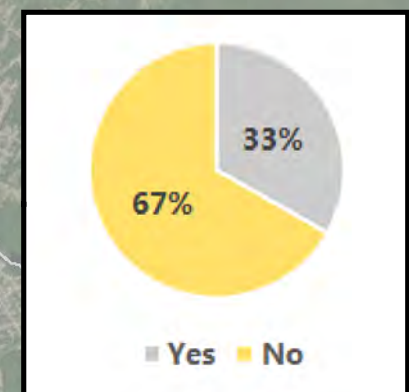
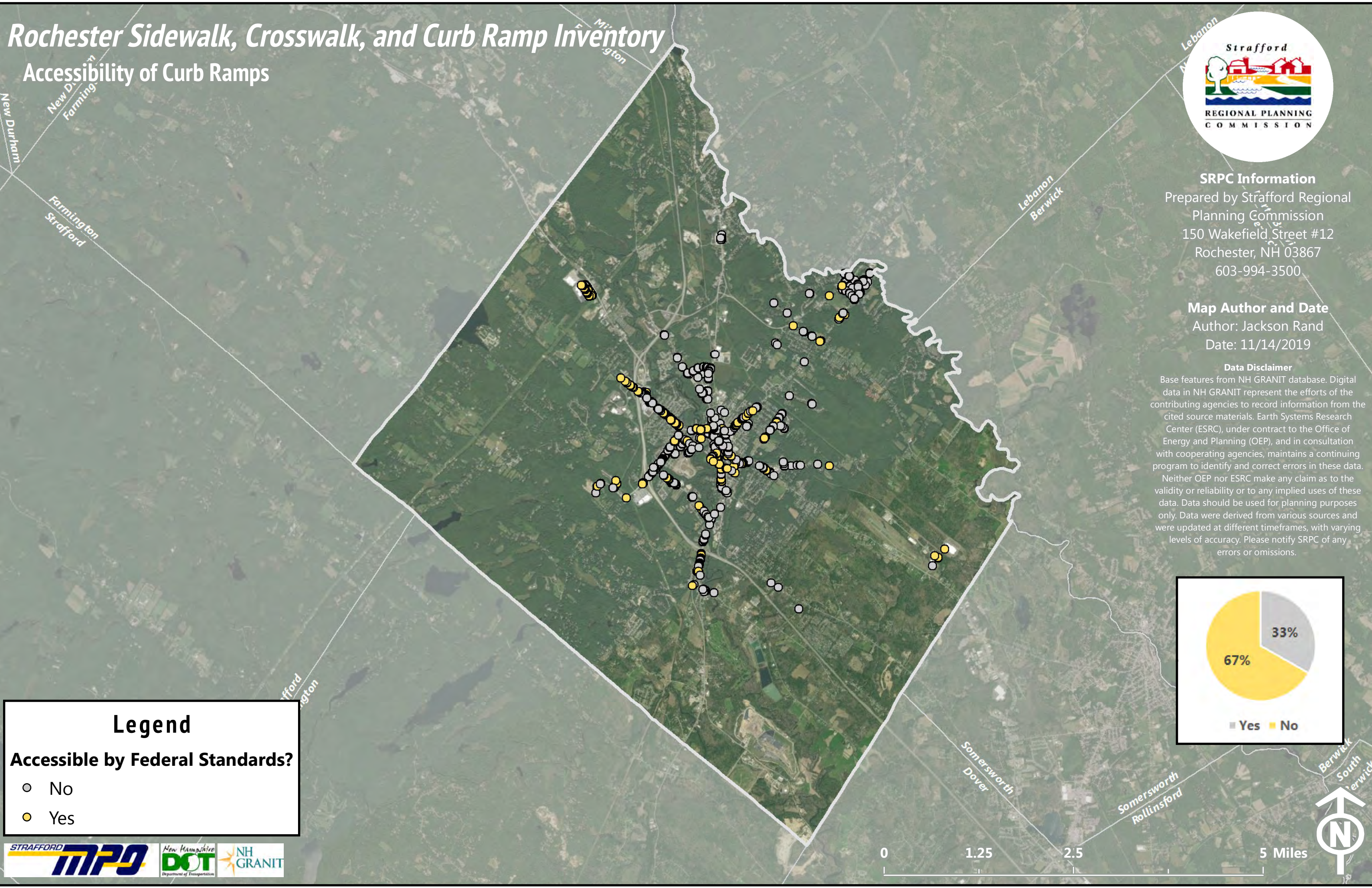
Prepared by Strafford Regional Planning Commission  
150 Wakefield Street #12  
Rochester, NH 03867  
603-994-3500

### Map Author and Date

Author: Jackson Rand  
Date: 11/14/2019

### Data Disclaimer

Base features from NH GRANIT database. Digital data in NH GRANIT represent the efforts of the contributing agencies to record information from the cited source materials. Earth Systems Research Center (ESRC), under contract to the Office of Energy and Planning (OEP), and in consultation with cooperating agencies, maintains a continuing program to identify and correct errors in these data. Neither OEP nor ESRC make any claim as to the validity or reliability or to any implied uses of these data. Data should be used for planning purposes only. Data were derived from various sources and were updated at different timeframes, with varying levels of accuracy. Please notify SRPC of any errors or omissions.



### Legend

**Accessible by Federal Standards?**

- No
- Yes

