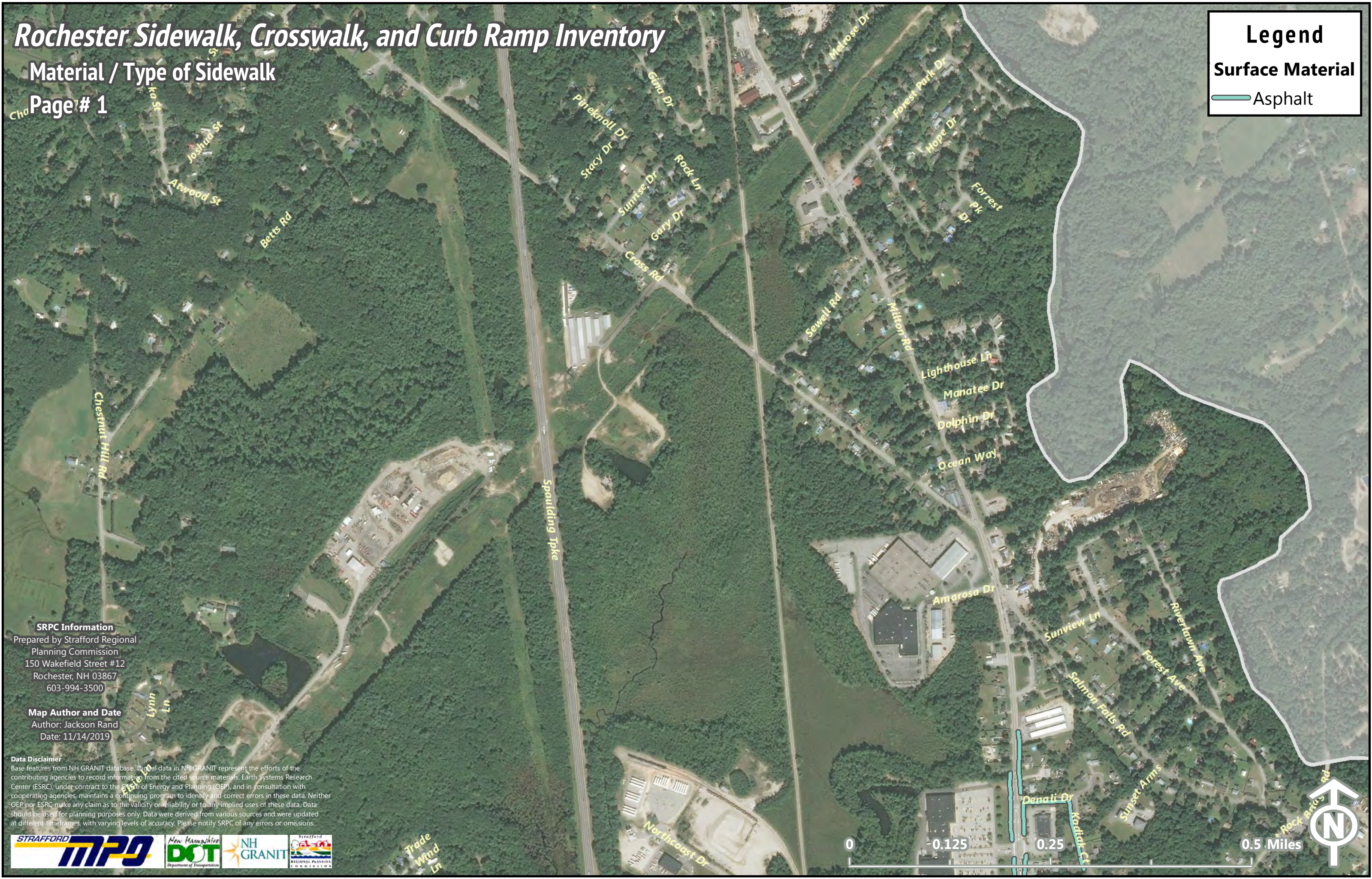


Rochester Sidewalk, Crosswalk, and Curb Ramp Inventory

Material / Type of Sidewalk

Page # 1

Legend
Surface Material
Asphalt



SRPC Information
Prepared by Strafford Regional
Planning Commission
150 Wakefield Street #12
Rochester, NH 03867
603-994-3500

Map Author and Date
Author: Jackson Rand
Date: 11/14/2019

Data Disclaimer
Base features from NH GRANIT database. Digital data in NH GRANIT represent the efforts of the contributing agencies to record information from the cited source materials. Earth Systems Research Center (ESRC), under contract to the Office of Energy and Planning (OEP), and in consultation with cooperating agencies, maintains a continuing program to identify and correct errors in these data. Neither OEP nor ESRC make any claim as to the validity or reliability or to any implied uses of these data. Data should be used for planning purposes only. Data were derived from various sources and were updated at different timeframes, with varying levels of accuracy. Please notify SRPC of any errors or omissions.



Rochester Sidewalk, Crosswalk, and Curb Ramp Inventory

Material / Type of Sidewalk

Page # 2

Legend
Surface Material
— Concrete



SRPC Information
Prepared by Strafford Regional
Planning Commission
150 Wakefield Street #12
Rochester, NH 03867
603-994-3500

Map Author and Date
Author: Jackson Rand
Date: 11/14/2019

Data Disclaimer
Base features from NH GRANIT database. Digital data in NH GRANIT represent the efforts of the contributing agencies to record information from the cited source materials. Earth Systems Research Center (ESRC), under contract to the Office of Energy and Planning (OEP), and in consultation with cooperating agencies, maintains a continuing program to identify and correct errors in these data. Neither OEP nor ESRC make any claim as to the validity or reliability or to any implied uses of these data. Data should be used for planning purposes only. Data were derived from various sources and were updated at different timeframes, with varying levels of accuracy. Please notify SRPC of any errors or omissions.



0 0.125 0.25 0.5 Miles

Rochester Sidewalk, Crosswalk, and Curb Ramp Inventory

Material / Type of Sidewalk

Page # 3

Legend

Surface Material

Asphalt



SRPC Information
 Prepared by Strafford Regional
 Planning Commission
 150 Wakefield Street #12
 Rochester, NH 03867
 603-994-3500

Map Author and Date
 Author: Jackson Rand
 Date: 11/14/2019

Data Disclaimer
 Base features from NH GRANIT database. Digital data in NH GRANIT represent the efforts of the contributing agencies to record information from the cited source materials. Earth Systems Research Center (ESRC), under contract to the Office of Energy and Planning (OEP), and in consultation with cooperating agencies, maintains a continuing program to identify and correct errors in these data. Neither OEP nor ESRC make any claim as to the validity or reliability or to any implied uses of these data. Data should be used for planning purposes only. Data were derived from various sources and were updated at different timeframes, with varying levels of accuracy. Please notify SRPC of any errors or omissions.



Rochester Sidewalk, Crosswalk, and Curb Ramp Inventory

Material / Type of Sidewalk

Page # 4

Legend

Surface Material

- Asphalt
- Concrete



SRPC Information
Prepared by Strafford Regional
Planning Commission
150 Wakefield Street #12
Rochester, NH 03867
603-994-3500

Map Author and Date
Author: Jackson Rand
Date: 11/14/2019

Data Disclaimer
Base features from NH GRANIT database. Digital data in NH GRANIT represent the efforts of the contributing agencies to record information from the cited source materials. Earth Systems Research Center (ESRC), under contract to the Office of Energy and Planning (OEP), and in consultation with cooperating agencies, maintains a continuing program to identify and correct errors in these data. Neither OEP nor ESRC make any claim as to the validity or reliability or to any implied uses of these data. Data should be used for planning purposes only. Data were derived from various sources and were updated at different timeframes, with varying levels of accuracy. Please notify SRPC of any errors or omissions.



Rochester Sidewalk, Crosswalk, and Curb Ramp Inventory

Material / Type of Sidewalk

Page # 5

Legend

Surface Material

- Asphalt
- Concrete



SRPC Information
Prepared by Strafford Regional
Planning Commission
150 Wakefield Street #12
Rochester, NH 03867
603-994-3500

Map Author and Date
Author: Jackson Rand
Date: 11/14/2019

Data Disclaimer
Base features from NH GRANIT database. Digital data in NH GRANIT represent the efforts of the contributing agencies to record information from the cited source materials. Earth Systems Research Center (ESRC), under contract to the Office of Energy and Planning (OEP), and in consultation with cooperating agencies, maintains a continuing program to identify and correct errors in these data. Neither OEP nor ESRC make any claim as to the validity or reliability or to any implied uses of these data. Data should be used for planning purposes only. Data were derived from various sources and were updated at different timeframes, with varying levels of accuracy. Please notify SRPC of any errors or omissions.



Rochester Sidewalk, Crosswalk, and Curb Ramp Inventory

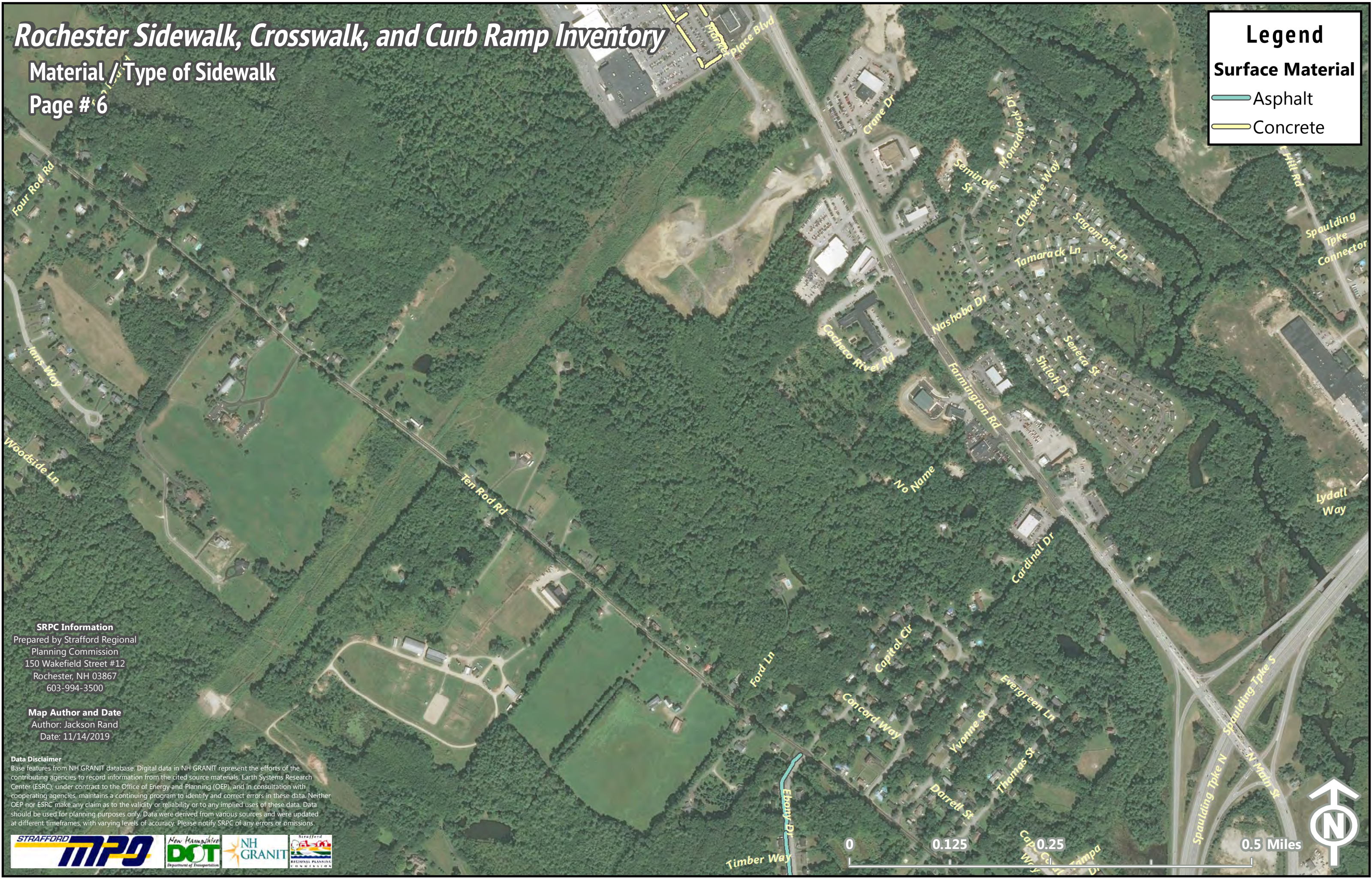
Material / Type of Sidewalk

Page # 6

Legend

Surface Material

- Asphalt
- Concrete



SRPC Information
Prepared by Strafford Regional
Planning Commission
150 Wakefield Street #12
Rochester, NH 03867
603-994-3500

Map Author and Date
Author: Jackson Rand
Date: 11/14/2019

Data Disclaimer
Base features from NH GRANIT database. Digital data in NH GRANIT represent the efforts of the contributing agencies to record information from the cited source materials. Earth Systems Research Center (ESRC), under contract to the Office of Energy and Planning (OEP), and in consultation with cooperating agencies, maintains a continuing program to identify and correct errors in these data. Neither OEP nor ESRC make any claim as to the validity or reliability or to any implied uses of these data. Data should be used for planning purposes only. Data were derived from various sources and were updated at different timeframes, with varying levels of accuracy. Please notify SRPC of any errors or omissions.



Rochester Sidewalk, Crosswalk, and Curb Ramp Inventory

Material / Type of Sidewalk

Page # 7

Legend

Surface Material

- Asphalt
- Concrete



SRPC Information
Prepared by Strafford Regional
Planning Commission
150 Wakefield Street #12
Rochester, NH 03867
603-994-3500

Map Author and Date
Author: Jackson Rand
Date: 11/14/2019

Data Disclaimer
Base features from NH GRANIT database. Digital data in NH GRANIT represent the efforts of the contributing agencies to record information from the city source materials. Earth Systems Research Center (ESRC), under contract to the Office of Energy and Planning (OEP), and in consultation with cooperating agencies, maintains a continuing program to identify and correct errors in these data. Neither OEP nor ESRC make any claim as to the validity or reliability or to any implied uses of these data. Data should be used for planning purposes only. Data were derived from various sources and were updated at different timeframes, with varying levels of accuracy. Please notify SRPC of any errors or omissions.



Rochester Sidewalk, Crosswalk, and Curb Ramp Inventory

Material / Type of Sidewalk

Page # 8

Legend

Surface Material

- Asphalt
- Concrete



SRPC Information
Prepared by Strafford Regional
Planning Commission
150 Wakefield Street #12
Rochester, NH 03867
603-994-3500

Map Author and Date
Author: Jackson Rand
Date: 11/14/2019

Data Disclaimer
Base features from NH GRANIT database. Digital data in NH GRANIT represent the efforts of the contributing agencies to record information from the cited source materials. Earth Systems Research Center (ESRC), under contract to the Office of Energy and Planning (OEP), and in consultation with cooperating agencies, maintains a continuing program to identify and correct errors in these data. Neither OEP nor ESRC make any claim as to the validity or reliability or to any implied uses of these data. Data should be used for planning purposes only. Data were derived from various sources and were updated at different timeframes, with varying levels of accuracy. Please notify SRPC of any errors or omissions.



Rochester Sidewalk, Crosswalk, and Curb Ramp Inventory

Material / Type of Sidewalk

Page # 9

Legend

Surface Material

- Asphalt
- Concrete



SRPC Information
Prepared by Strafford Regional
Planning Commission
150 Wakefield Street #12
Rochester, NH 03867
603-994-3500

Map Author and Date
Author: Jackson Rand
Date: 11/14/2019

Data Disclaimer
Base features from NH GRANIT database. Digital data in NH GRANIT represent the efforts of the contributing agencies to record information from the cited source materials. Earth Systems Research Center (ESRC), under contract to the Office of Energy and Planning (OEP), and in consultation with cooperating agencies, maintains a continuing program to identify and correct errors in these data. Neither OEP nor ESRC make any claim as to the validity or reliability or to any implied uses of these data. Data should be used for planning purposes only. Data were derived from various sources and were updated at different timeframes, with varying levels of accuracy. Please notify SRPC of any errors or omissions.



0 0.125 0.25 0.5 Miles

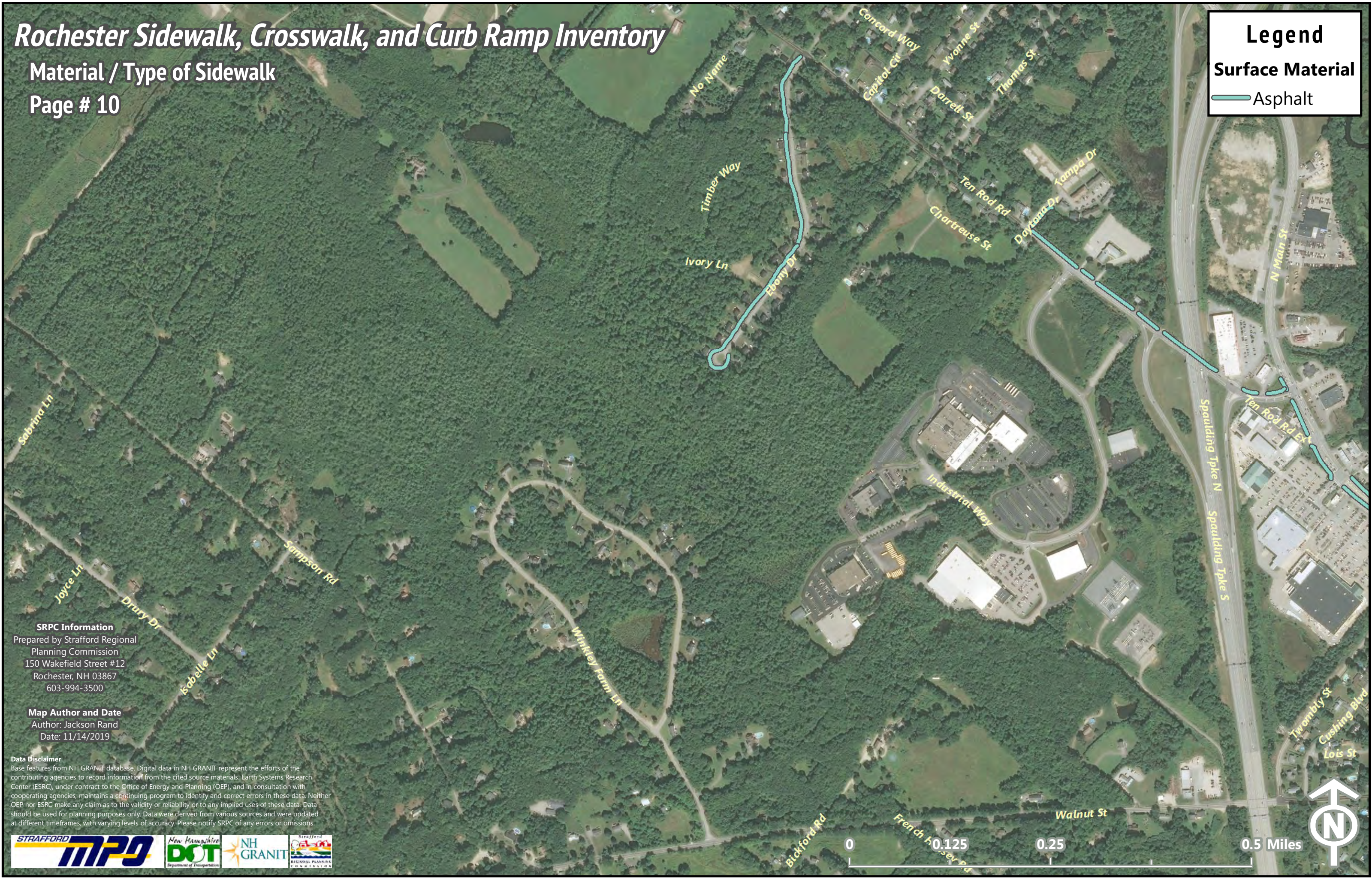


Rochester Sidewalk, Crosswalk, and Curb Ramp Inventory

Material / Type of Sidewalk

Page # 10

Legend
Surface Material
Asphalt



SRPC Information
Prepared by Strafford Regional
Planning Commission
150 Wakefield Street #12
Rochester, NH 03867
603-994-3500

Map Author and Date
Author: Jackson Rand
Date: 11/14/2019

Data Disclaimer
Base features from NH GRANIT database. Digital data in NH GRANIT represent the efforts of the contributing agencies to record information from the cited source materials. Earth Systems Research Center (ESRC), under contract to the Office of Energy and Planning (OEP), and in consultation with cooperating agencies, maintains a continuing program to identify and correct errors in these data. Neither OEP nor ESRC make any claim as to the validity or reliability or to any implied uses of these data. Data should be used for planning purposes only. Data were derived from various sources and were updated at different timeframes, with varying levels of accuracy. Please notify SRPC of any errors or omissions.



Rochester Sidewalk, Crosswalk, and Curb Ramp Inventory

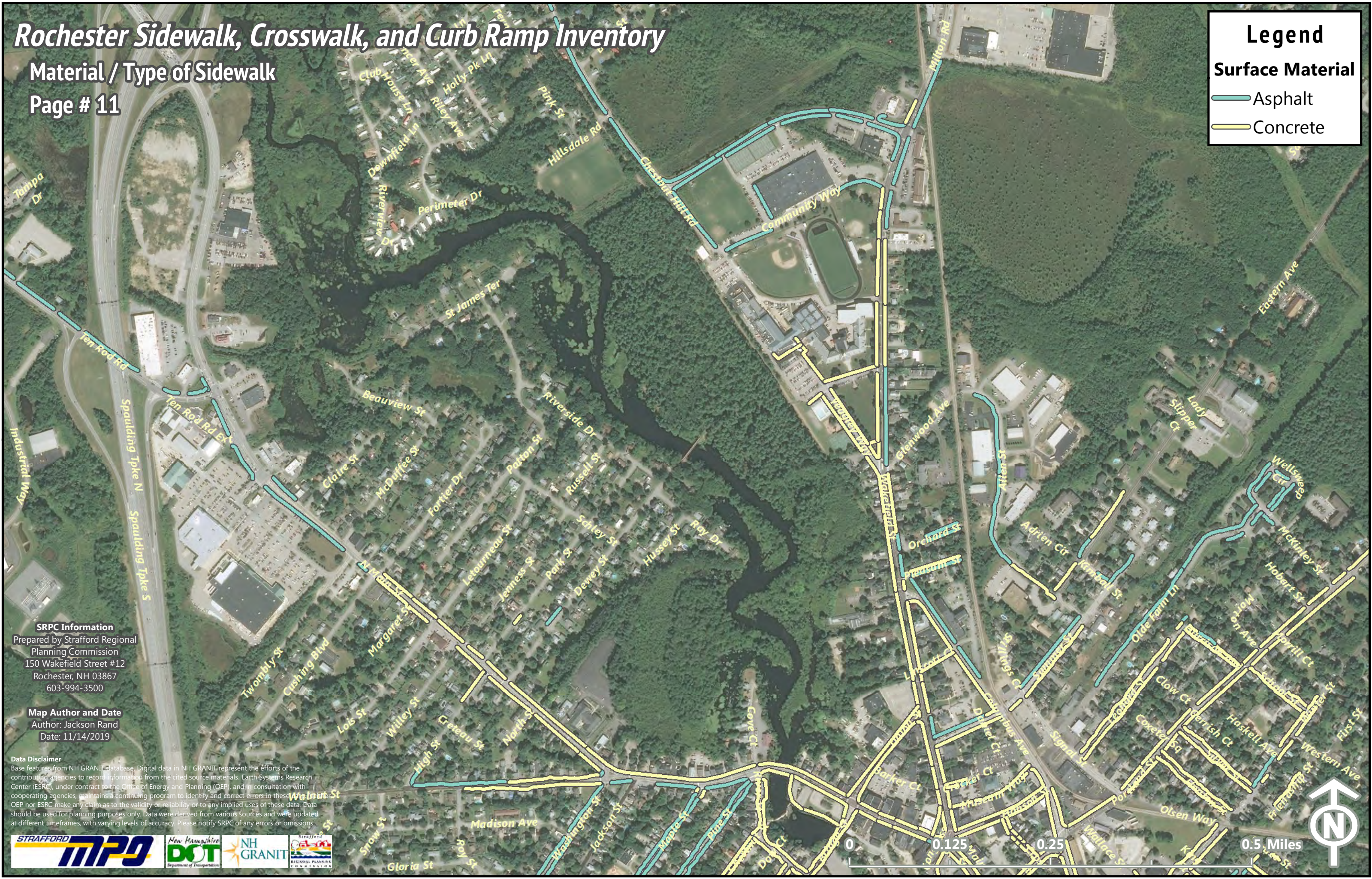
Material / Type of Sidewalk

Page # 11

Legend

Surface Material

- Asphalt
- Concrete



SRPC Information
Prepared by Strafford Regional
Planning Commission
150 Wakefield Street #12
Rochester, NH 03867
603-994-3500

Map Author and Date
Author: Jackson Rand
Date: 11/14/2019

Data Disclaimer
Base features from NH GRANIT database. Digital data in NH GRANIT represent the efforts of the contributing agencies to record information from the cited source materials. Earth Systems Research Center (ESRC), under contract to the Office of Energy and Planning (OEP), and in consultation with cooperating agencies, maintains a continuing program to identify and correct errors in these data. OEP nor ESRC make any claim as to the validity or reliability or to any implied uses of these data. Data should be used for planning purposes only. Data were derived from various sources and were updated at different timeframes, with varying levels of accuracy. Please notify SRPC of any errors or omissions.



Rochester Sidewalk, Crosswalk, and Curb Ramp Inventory

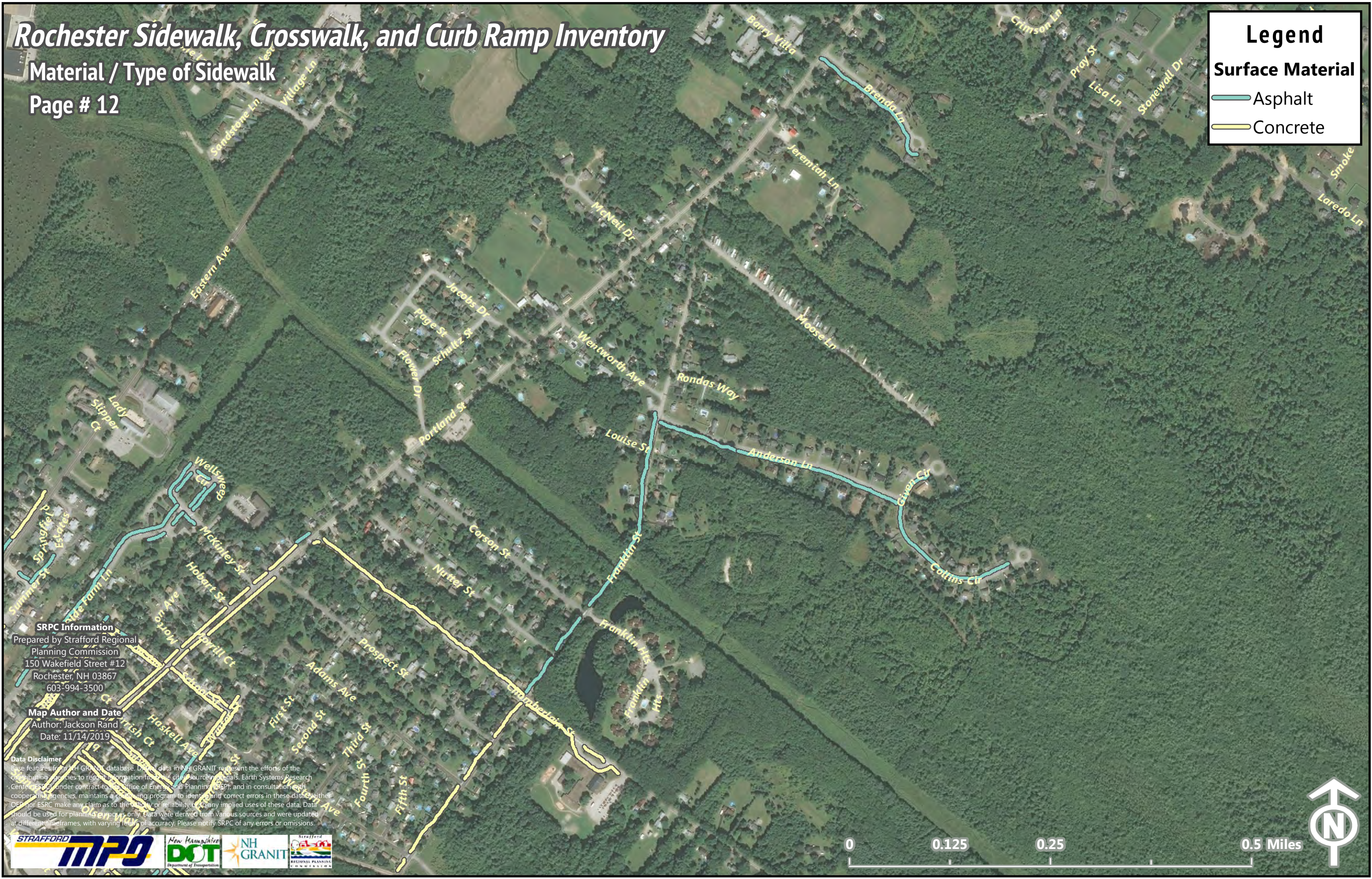
Material / Type of Sidewalk

Page # 12

Legend

Surface Material

- Asphalt
- Concrete



SRPC Information
Prepared by Strafford Regional
Planning Commission
150 Wakefield Street #12
Rochester, NH 03867
603-994-3500

Map Author and Date
Author: Jackson Rand
Date: 11/14/2019

Data Disclaimer
Base features from NH GRANIT database. Digital data in NH GRANIT represent the efforts of the contributing agencies to record information from their source materials. Earth Systems Research Center (ESRC) under contract to the Office of Energy and Planning (OEP), and in consultation with cooperating agencies, maintains a continuing program to identify and correct errors in these data. Neither OEP nor ESRC make any claim as to the quality or reliability of any implied uses of these data. Data should be used for planning purposes only. Data were derived from various sources and were updated at different timeframes, with varying levels of accuracy. Please notify SRPC of any errors or omissions.



Rochester Sidewalk, Crosswalk, and Curb Ramp Inventory

Material / Type of Sidewalk

Page # 13

Legend
Surface Material
Asphalt



SRPC Information
Prepared by Strafford Regional
Planning Commission
150 Wakefield Street #12
Rochester, NH 03867
603-994-3500

Map Author and Date
Author: Jackson Rand
Date: 11/14/2019

Data Disclaimer
Base features from NH GRANIT database. Digital data in NH GRANIT represent the efforts of the contributing agencies to record information from the cited source materials. Earth Systems Research Center (ESRC), under contract to the Office of Energy and Planning (OEP), and in consultation with cooperating agencies, maintains a continuing program to identify and correct errors in these data. Neither OEP nor ESRC make any claim as to the validity or reliability or to any implied uses of these data. Data should be used for planning purposes only. Data were derived from various sources and were updated at different timeframes, with varying levels of accuracy. Please notify SRPC of any errors or omissions.



Rochester Sidewalk, Crosswalk, and Curb Ramp Inventory

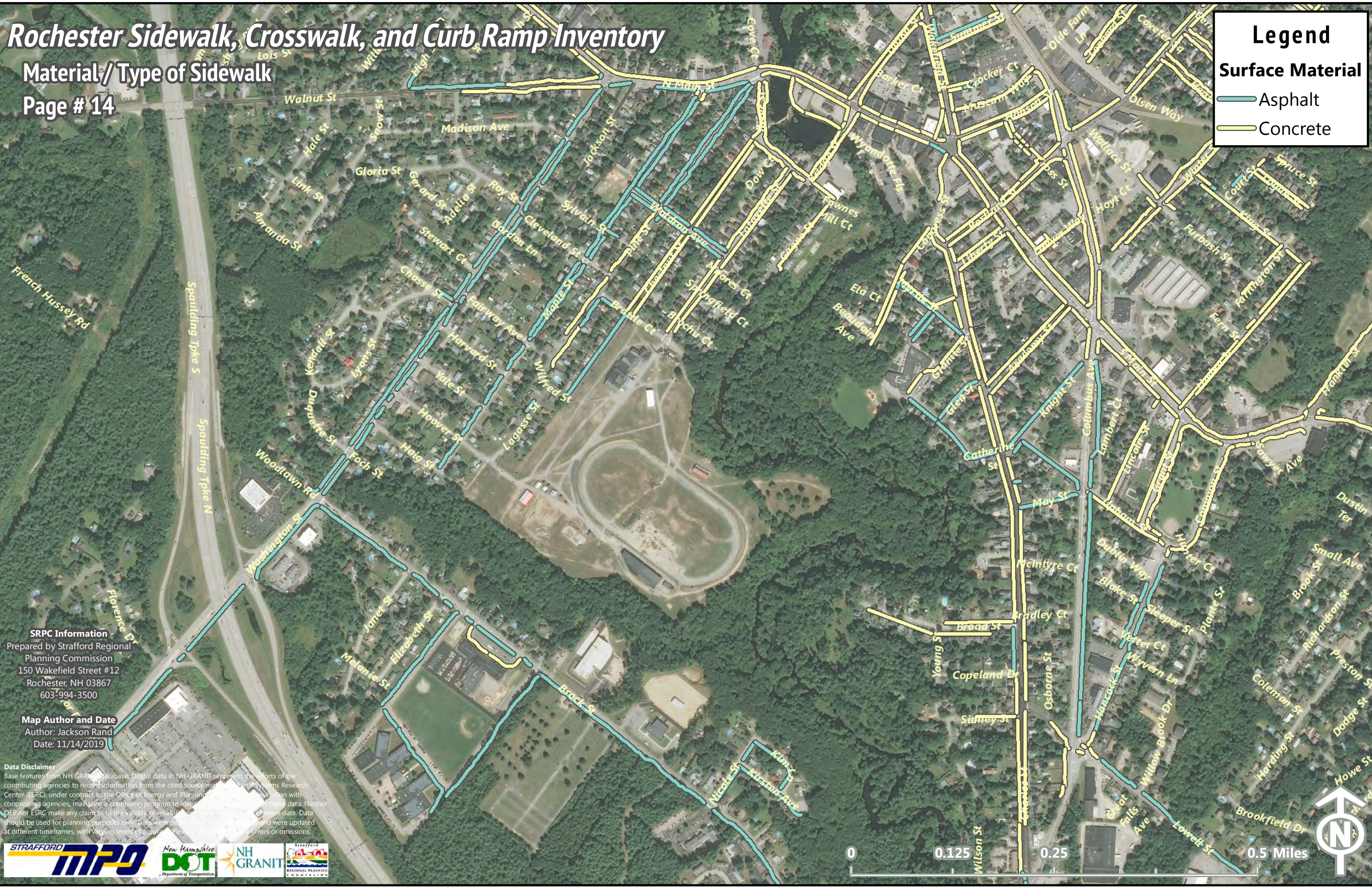
Material/Type of Sidewalk

Page # 14

Legend

Surface Material

- Asphalt
- Concrete



SRPC Information
Prepared by Strafford Regional
Planning Commission
150 Wakefield Street #12
Rochester, NH 03867
603-994-3500

Map Author and Date
Author: Jackson Rand
Date: 11/14/2019

Data Disclaimer
Base features from NH GRANIT database. Digital data in NH GRANIT represent the efforts of the contributing agencies to record information from the cited source maps. Earth Systems Research Center (ESRC), under contract to the Office of Energy and Planning, in consultation with cooperating agencies, maintains a continuing program to identify and update these data. Neither OEP nor ESRC make any claim as to the validity or reliability of the data. Data should be used for planning purposes only. Data were derived from various sources and were updated at different timeframes, with varying levels of accuracy. Please notify us of any errors or omissions.



Rochester Sidewalk, Crosswalk, and Curb Ramp Inventory

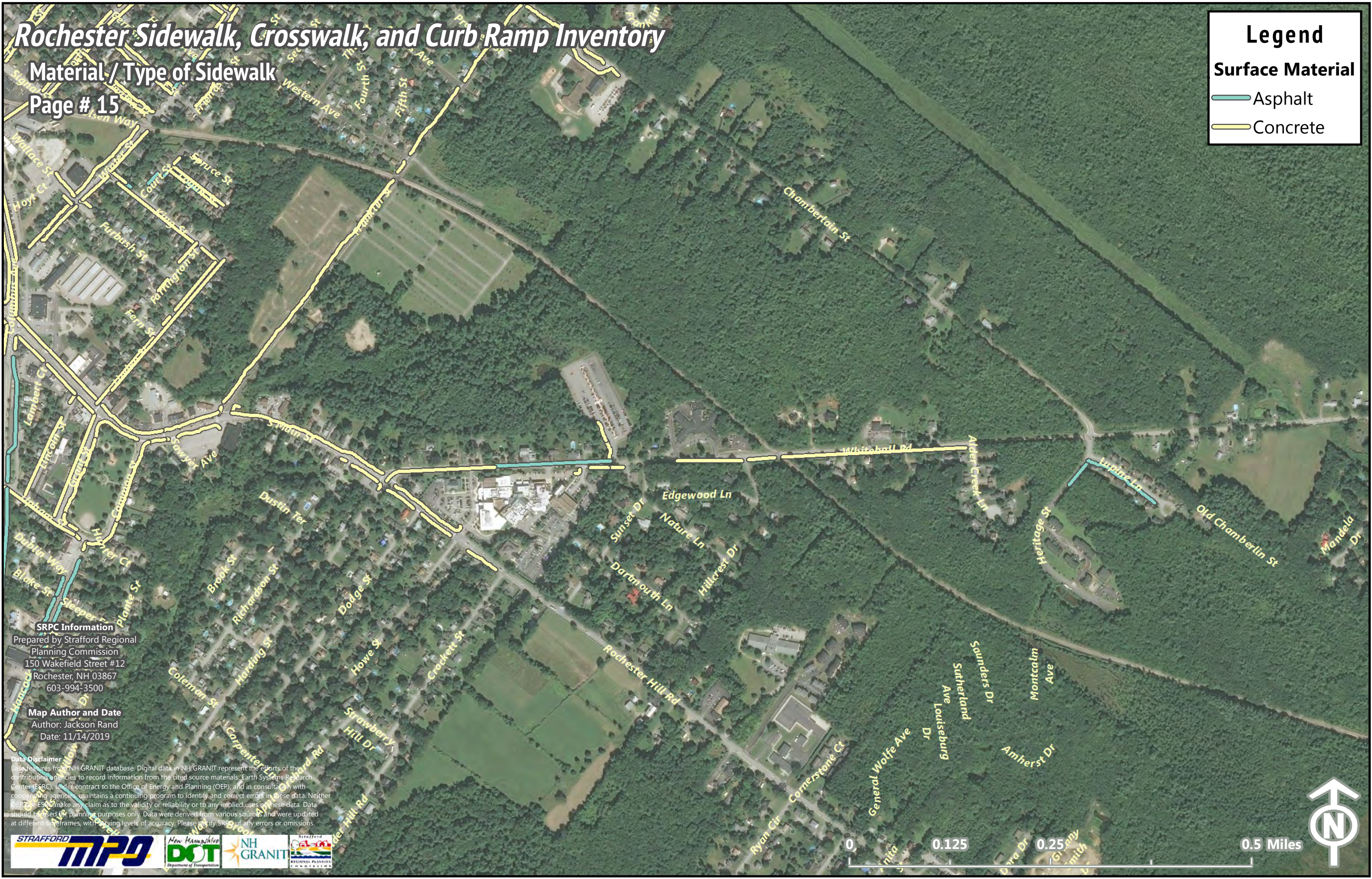
Material / Type of Sidewalk

Page # 15

Legend

Surface Material

- Asphalt
- Concrete



SRPC Information
Prepared by Strafford Regional
Planning Commission
150 Wakefield Street #12
Rochester, NH 03867
603-994-3500

Map Author and Date
Author: Jackson Rand
Date: 11/14/2019

Data Disclaimer
Base features from NH GRANIT database. Digital data in NH GRANIT represent the efforts of the contributing agencies to record information from the cited source materials. Earth Systems Research Center (ESRC), under contract to the Office of Energy and Planning (OEP), and in consultation with cooperating agencies, maintains a continuing program to identify and correct errors in these data. Neither OEP nor ESRC make any claim as to the validity or reliability or to any implied uses of these data. Data should be used for planning purposes only. Data were derived from various sources and were updated at different timeframes, with varying levels of accuracy. Please notify SRPC of any errors or omissions.



Rochester Sidewalk, Crosswalk, and Curb Ramp Inventory

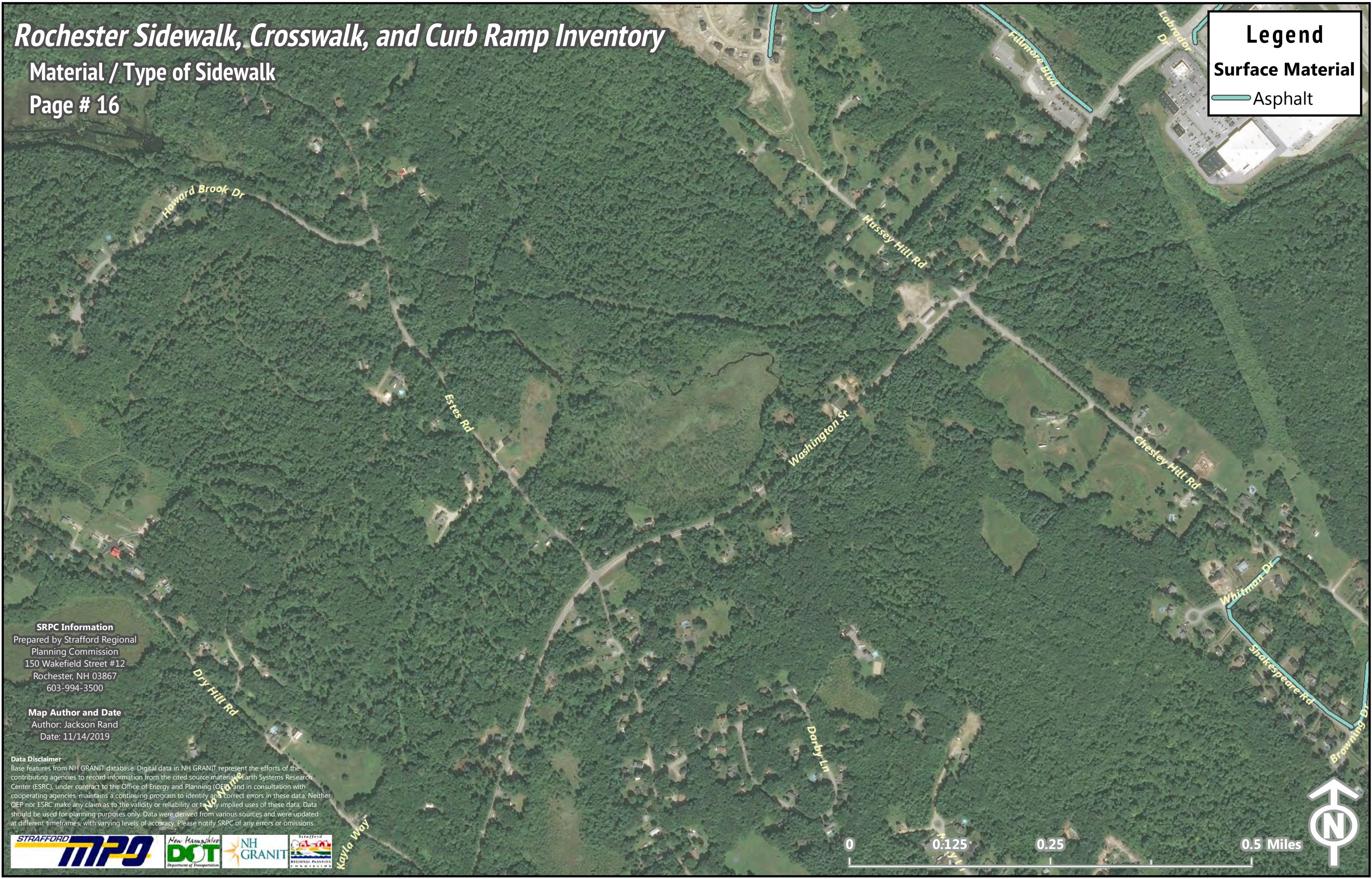
Material / Type of Sidewalk

Page # 16

Legend

Surface Material

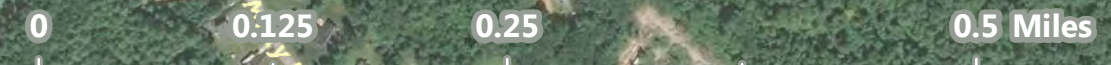
- Asphalt



SRPC Information
Prepared by Strafford Regional
Planning Commission
150 Wakefield Street #12
Rochester, NH 03867
603-994-3500

Map Author and Date
Author: Jackson Rand
Date: 11/14/2019

Data Disclaimer
Base features from NH GRANIT database. Digital data in NH GRANIT represent the efforts of the contributing agencies to record information from the cited source materials. Earth Systems Research Center (ESRC), under contract to the Office of Energy and Planning (OEP) and in consultation with cooperating agencies, maintains a continuing program to identify and correct errors in these data. Neither OEP nor ESRC make any claim as to the validity or reliability or to any implied uses of these data. Data should be used for planning purposes only. Data were derived from various sources and were updated at different timeframes, with varying levels of accuracy. Please notify SRPC of any errors or omissions.



Rochester Sidewalk, Crosswalk, and Curb Ramp Inventory

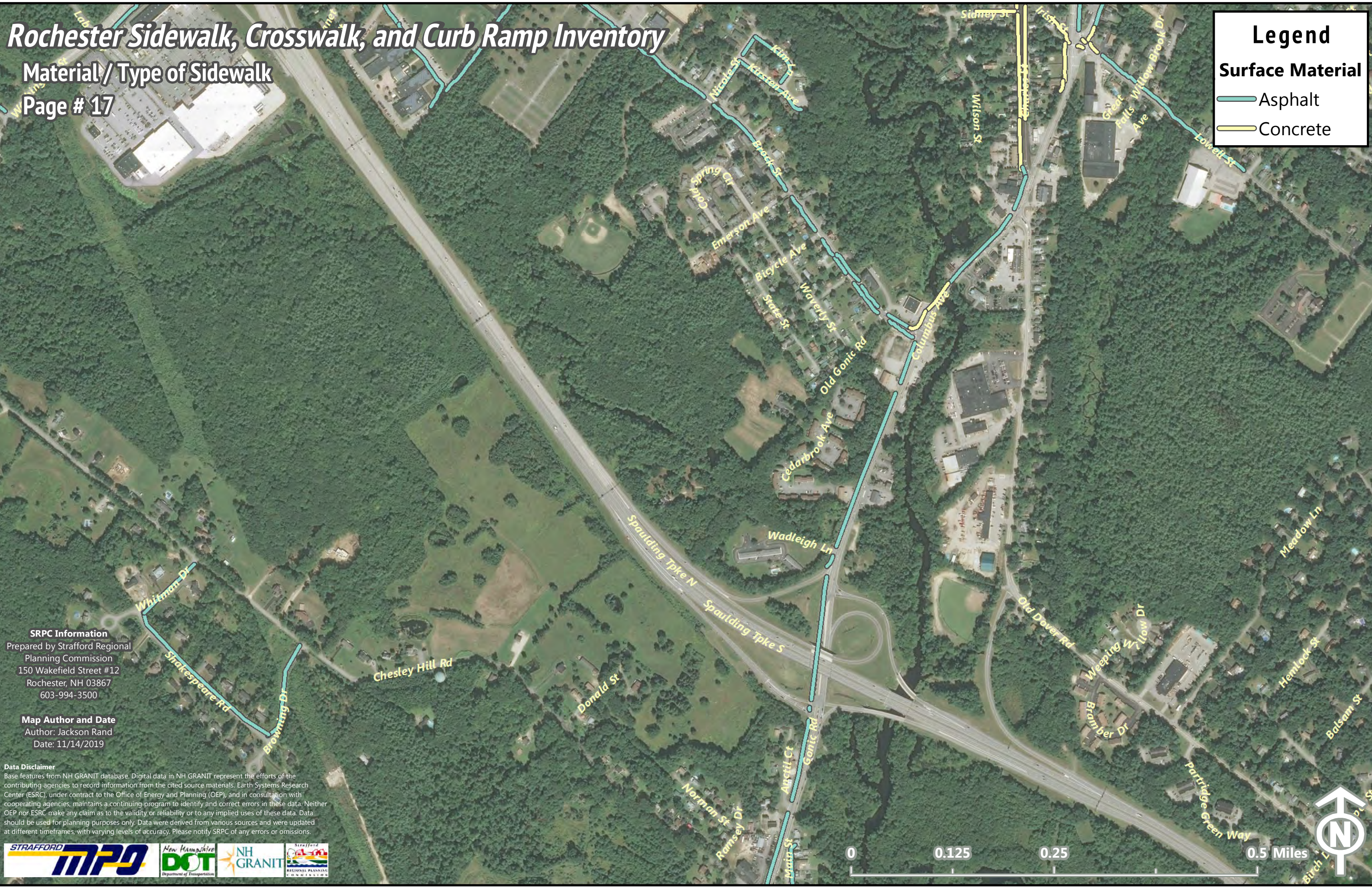
Material / Type of Sidewalk

Page # 17

Legend

Surface Material

- Asphalt
- Concrete



SRPC Information
Prepared by Strafford Regional
Planning Commission
150 Wakefield Street #12
Rochester, NH 03867
603-994-3500

Map Author and Date
Author: Jackson Rand
Date: 11/14/2019

Data Disclaimer
Base features from NH GRANIT database. Digital data in NH GRANIT represent the efforts of the contributing agencies to record information from the cited source materials. Earth Systems Research Center (ESRC), under contract to the Office of Energy and Planning (OEP), and in consultation with cooperating agencies, maintains a continuing program to identify and correct errors in these data. Neither OEP nor ESRC make any claim as to the validity or reliability or to any implied uses of these data. Data should be used for planning purposes only. Data were derived from various sources and were updated at different timeframes, with varying levels of accuracy. Please notify SRPC of any errors or omissions.



Rochester Sidewalk, Crosswalk, and Curb Ramp Inventory

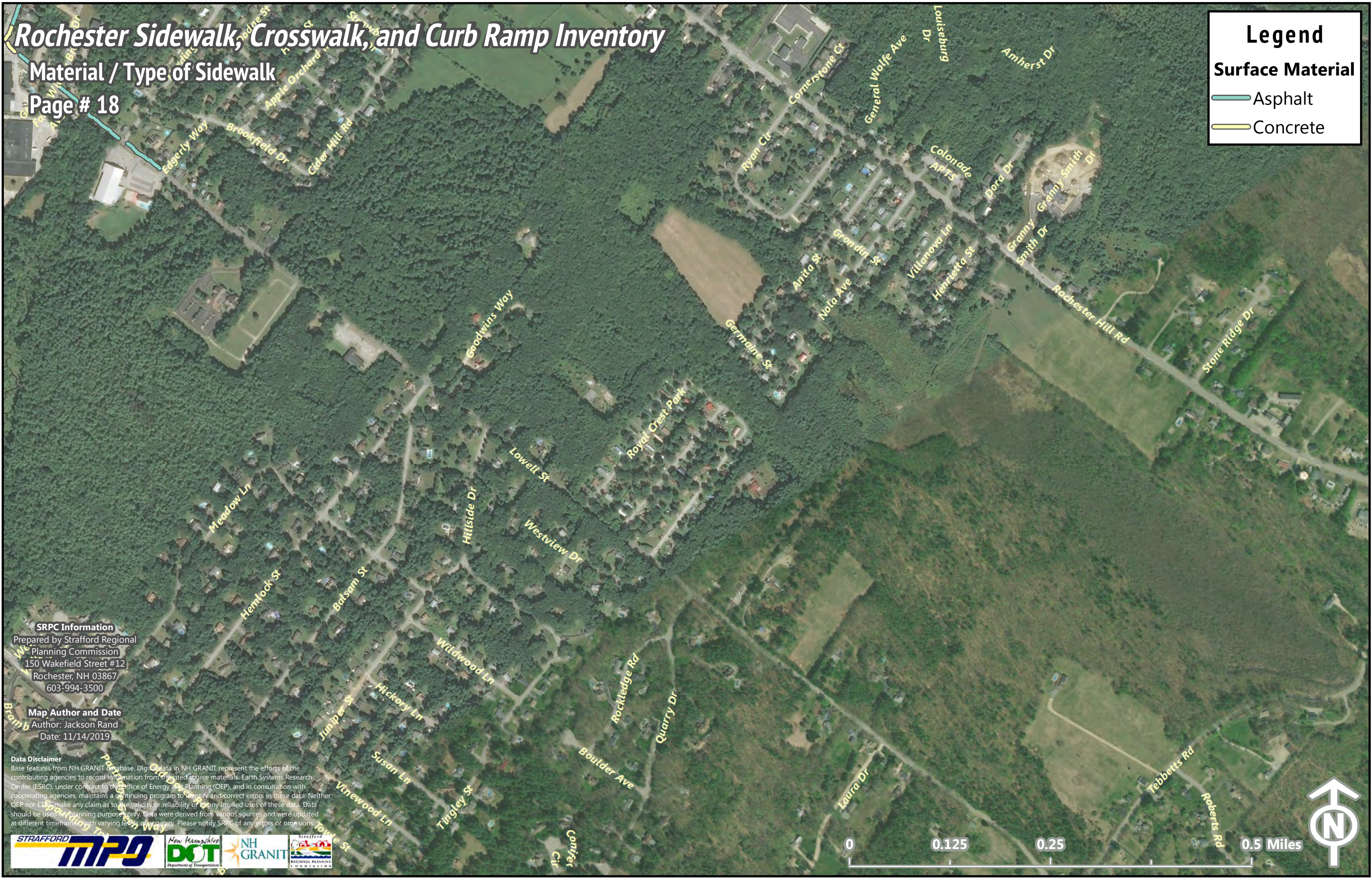
Material / Type of Sidewalk

Page # 18

Legend

Surface Material

- Asphalt
- Concrete



SRPC Information
Prepared by Strafford Regional
Planning Commission
150 Wakefield Street #12
Rochester, NH 03867
603-994-3500

Map Author and Date
Author: Jackson Rand
Date: 11/14/2019

Data Disclaimer
Base features from NH GRANIT database. Digital data in NH GRANIT represent the efforts of the contributing agencies to record information from the cited source materials. Earth Systems Research Center (ESRC), under contract to the Office of Energy and Planning (OEP), and in consultation with cooperating agencies, maintains a continuing program to identify and correct errors in these data. Neither OEP nor ESRC make any claim as to the validity or reliability of, or any implied uses of these data. Data should be used for planning purposes only. Data were derived from various sources and were updated at different timeframes with varying levels of accuracy. Please notify SRPC of any errors or omissions.



Rochester Sidewalk, Crosswalk, and Curb Ramp Inventory

Material / Type of Sidewalk

Page # 19

Legend

Surface Material

- Asphalt
- Concrete



SRPC Information
Prepared by Strafford Regional
Planning Commission
150 Wakefield Street #12
Rochester, NH 03867
603-994-3500

Map Author and Date
Author: Jackson Rand
Date: 11/14/2019

Data Disclaimer
Base features from NH GRANIT database. Digital data in NH GRANIT represent the efforts of the contributing agencies to record information from the cited source materials. Earth Systems Research Center (ESRC), under contract to the Office of Energy and Planning (OEP), and in consultation with cooperating agencies, maintains a continuing program to identify and correct errors in these data. Neither OEP nor ESRC make any claim as to the validity or reliability or to any implied uses of these data. Data should be used for planning purposes only. Data were derived from various sources and were updated at different timeframes, with varying levels of accuracy. Please notify SRPC of any errors or omissions.



0 0.125 0.25 0.5 Miles



Rochester Sidewalk, Crosswalk, and Curb Ramp Inventory

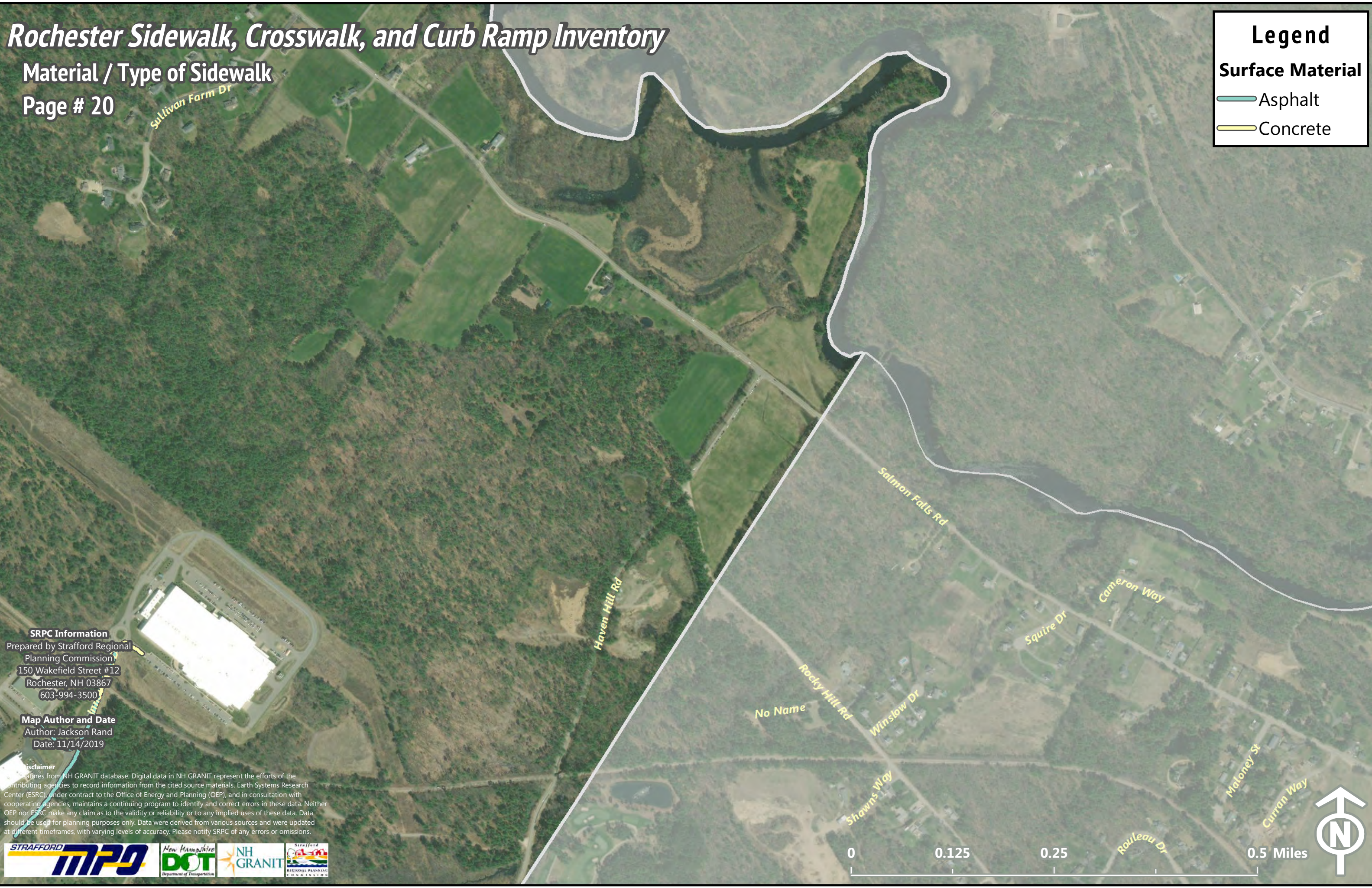
Material / Type of Sidewalk

Page # 20

Legend

Surface Material

- Asphalt
- Concrete



SRPC Information
Prepared by Strafford Regional
Planning Commission
150 Wakefield Street #12
Rochester, NH 03867
603-994-3500

Map Author and Date
Author: Jackson Rand
Date: 11/14/2019

Disclaimer
Data derived from NH GRANIT database. Digital data in NH GRANIT represent the efforts of the contributing agencies to record information from the cited source materials. Earth Systems Research Center (ESRC), under contract to the Office of Energy and Planning (OEP), and in consultation with cooperating agencies, maintains a continuing program to identify and correct errors in these data. Neither OEP nor ESRC make any claim as to the validity or reliability or to any implied uses of these data. Data should be used for planning purposes only. Data were derived from various sources and were updated at different timeframes, with varying levels of accuracy. Please notify SRPC of any errors or omissions.



Rochester Sidewalk, Crosswalk, and Curb Ramp Inventory

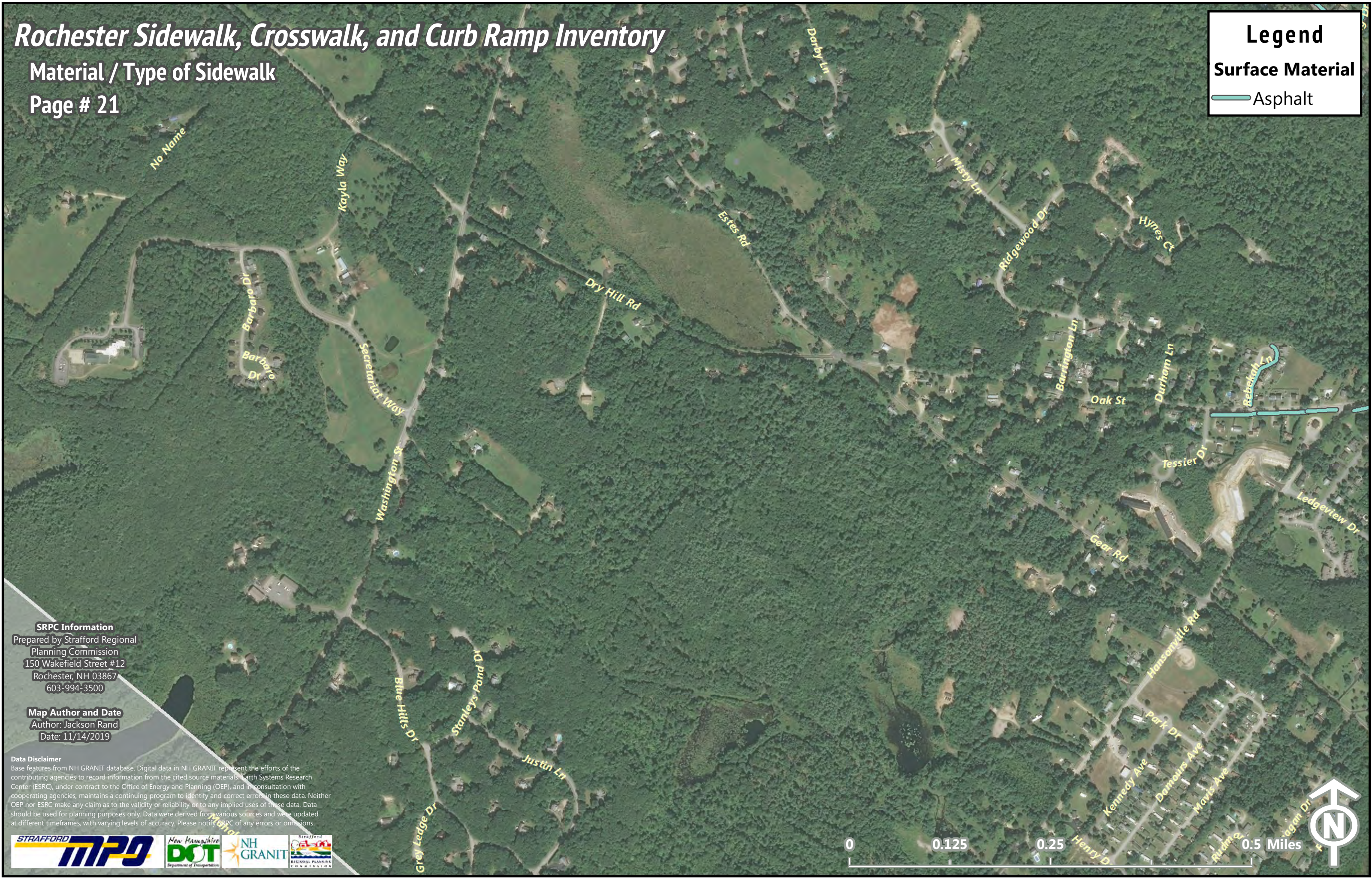
Material / Type of Sidewalk

Page # 21

Legend

Surface Material

- Asphalt



SRPC Information
Prepared by Strafford Regional
Planning Commission
150 Wakefield Street #12
Rochester, NH 03867
603-994-3500

Map Author and Date
Author: Jackson Rand
Date: 11/14/2019

Data Disclaimer
Base features from NH GRANIT database. Digital data in NH GRANIT represent the efforts of the contributing agencies to record information from the cited source materials. Earth Systems Research Center (ESRC), under contract to the Office of Energy and Planning (OEP), and in consultation with cooperating agencies, maintains a continuing program to identify and correct errors in these data. Neither OEP nor ESRC make any claim as to the validity or reliability or to any implied uses of these data. Data should be used for planning purposes only. Data were derived from various sources and were updated at different timeframes, with varying levels of accuracy. Please notify SRPC of any errors or omissions.



Rochester Sidewalk, Crosswalk, and Curb Ramp Inventory

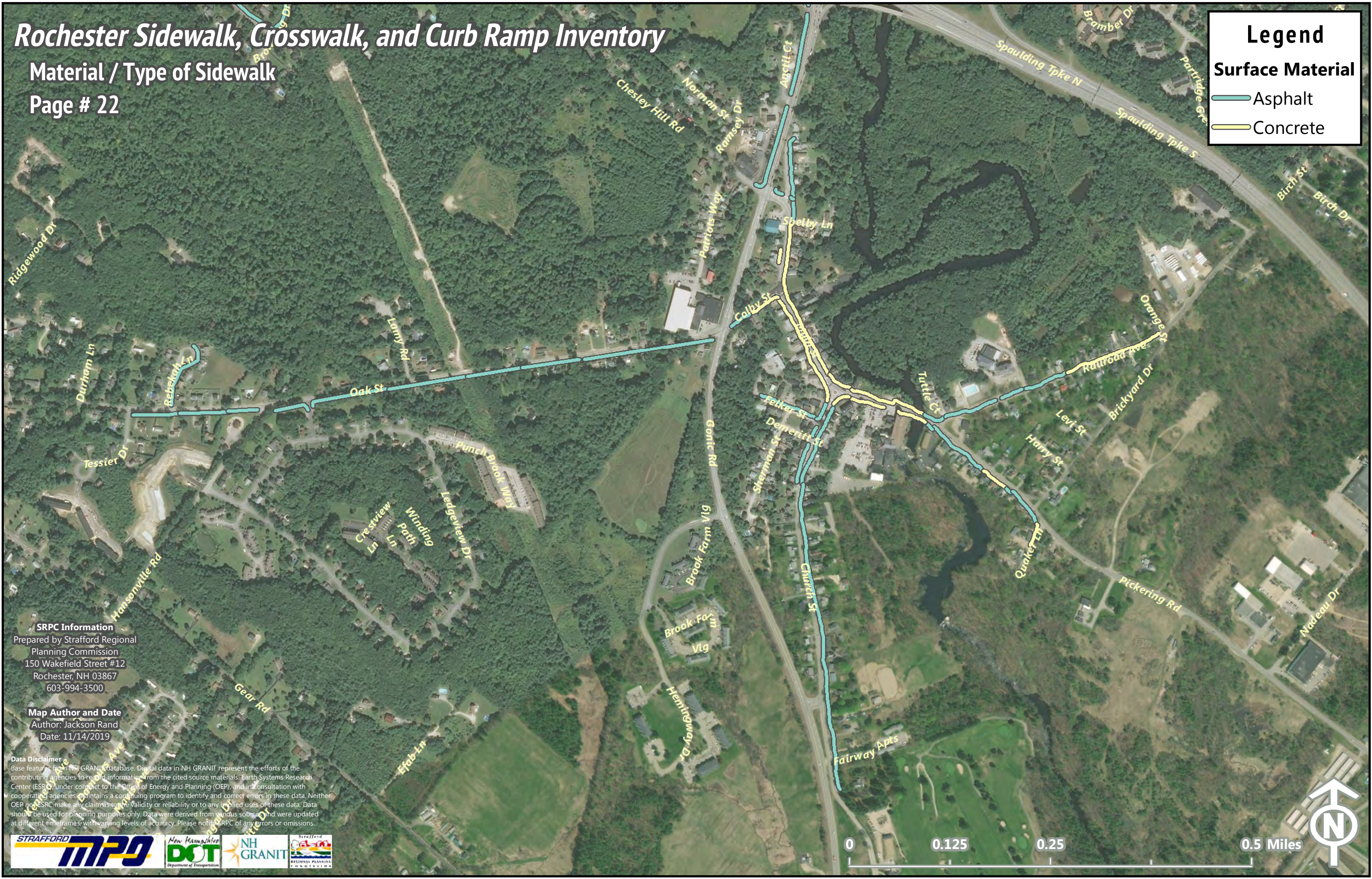
Material / Type of Sidewalk

Page # 22

Legend

Surface Material

- Asphalt
- Concrete



SRPC Information
Prepared by Strafford Regional
Planning Commission
150 Wakefield Street #12
Rochester, NH 03867
603-994-3500

Map Author and Date
Author: Jackson Rand
Date: 11/14/2019

Data Disclaimer
Base features from NH GRANIT database. Digital data in NH GRANIT represent the efforts of the contributing agencies to record information from the cited source materials. Earth Systems Research Center (ESRC), under contract to the Office of Energy and Planning (OEP), and in consultation with cooperating agencies, maintains a continuing program to identify and correct errors in these data. Neither OEP nor ESRC make any claims to the validity or reliability or to any implied uses of these data. Data should be used for planning purposes only. Data were derived from various sources and were updated at different timeframes with varying levels of accuracy. Please notify SRPC of any errors or omissions.



Rochester Sidewalk, Crosswalk, and Curb Ramp Inventory

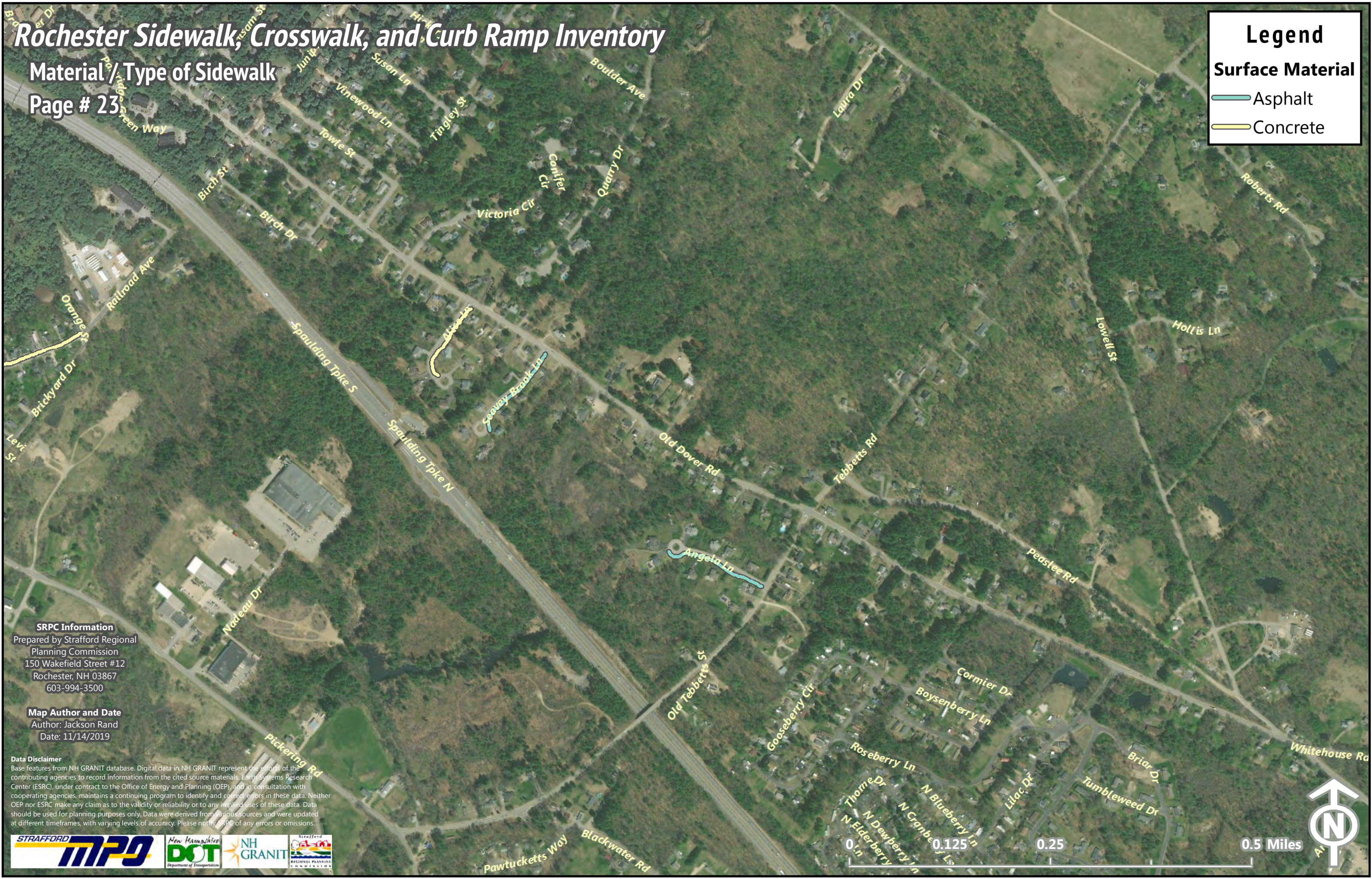
Material / Type of Sidewalk

Page # 23

Legend

Surface Material

- Asphalt
- Concrete



SRPC Information
Prepared by Strafford Regional
Planning Commission
150 Wakefield Street #12
Rochester, NH 03867
603-994-3500

Map Author and Date
Author: Jackson Rand
Date: 11/14/2019

Data Disclaimer
Base features from NH GRANIT database. Digital data in NH GRANIT represent the efforts of the contributing agencies to record information from the cited source materials. Earth Systems Research Center (ESRC), under contract to the Office of Energy and Planning (OEP), and in consultation with cooperating agencies, maintains a continuing program to identify and correct errors in these data. Neither OEP nor ESRC make any claim as to the validity or reliability or to any implied uses of these data. Data should be used for planning purposes only. Data were derived from various sources and were updated at different timeframes, with varying levels of accuracy. Please notify SRPC of any errors or omissions.



Scale: 0.125, 0.25, 0.5 Miles

Rochester Sidewalk, Crosswalk, and Curb Ramp Inventory

Material / Type of Sidewalk

Page # 24

Legend
Surface Material
Asphalt



SRPC Information
Prepared by Strafford Regional
Planning Commission
150 Wakefield Street #12
Rochester, NH 03867
603-994-3500

Map Author and Date
Author: Jackson Rand
Date: 11/14/2019

Data Disclaimer
Base features from NH GRANIT database. Digital data in NH GRANIT represent the efforts of the contributing agencies to record information from the cited source materials. Earth Systems Research Center (ESRC), under contract to the Office of Energy and Planning (OEP), and in consultation with cooperating agencies, maintains a continuing program to identify and correct errors in these data. Neither OEP nor ESRC make any claim as to the validity or reliability or to any implied uses of these data. Data should be used for planning purposes only. Data were derived from various sources and were updated at different timeframes, with varying levels of accuracy. Please notify SRPC of any errors or omissions.

