

Rochester Sidewalk, Crosswalk, and Curb Ramp Inventory

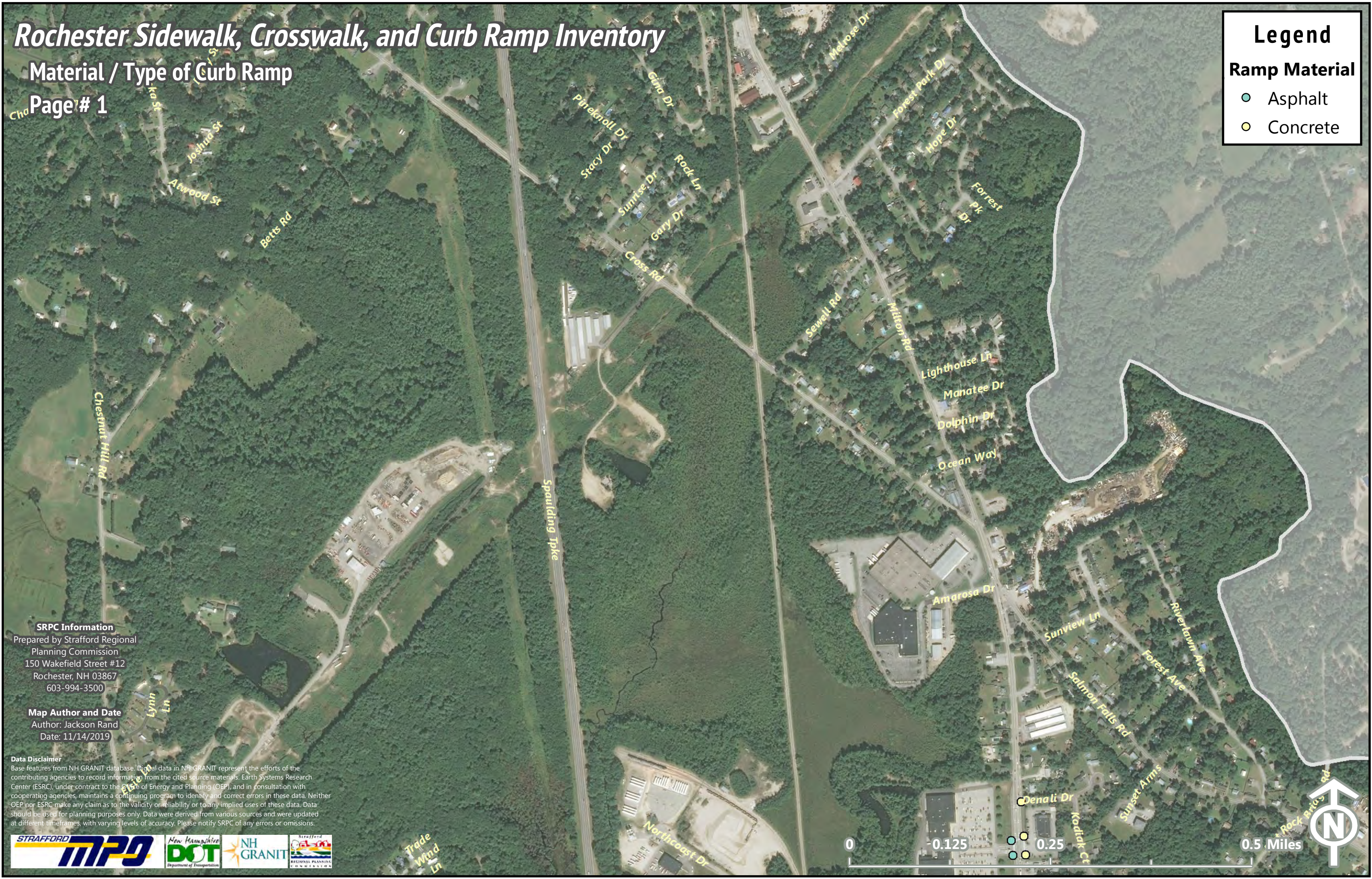
Material / Type of Curb Ramp

Page # 1

Legend

Ramp Material

- Asphalt
- Concrete



SRPC Information
Prepared by Strafford Regional
Planning Commission
150 Wakefield Street #12
Rochester, NH 03867
603-994-3500

Map Author and Date
Author: Jackson Rand
Date: 11/14/2019

Data Disclaimer
Base features from NH GRANIT database. Digital data in NH GRANIT represent the efforts of the contributing agencies to record information from the cited source materials. Earth Systems Research Center (ESRC), under contract to the Office of Energy and Planning (OEP), and in consultation with cooperating agencies, maintains a continuing program to identify and correct errors in these data. Neither OEP nor ESRC make any claim as to the validity or reliability or to any implied uses of these data. Data should be used for planning purposes only. Data were derived from various sources and were updated at different timeframes, with varying levels of accuracy. Please notify SRPC of any errors or omissions.



Rochester Sidewalk, Crosswalk, and Curb Ramp Inventory

Material / Type of Curb Ramp

Page # 2

Legend

Ramp Material

- Concrete



SRPC Information
Prepared by Strafford Regional
Planning Commission
150 Wakefield Street #12
Rochester, NH 03867
603-994-3500

Map Author and Date
Author: Jackson Rand
Date: 11/14/2019

Data Disclaimer
Base features from NH GRANIT database. Digital data in NH GRANIT represent the efforts of the contributing agencies to record information from the cited source materials. Earth Systems Research Center (ESRC), under contract to the Office of Energy and Planning (OEP), and in consultation with cooperating agencies, maintains a continuing program to identify and correct errors in these data. Neither OEP nor ESRC make any claim as to the validity or reliability or to any implied uses of these data. Data should be used for planning purposes only. Data were derived from various sources and were updated at different timeframes, with varying levels of accuracy. Please notify SRPC of any errors or omissions.



Rochester Sidewalk, Crosswalk, and Curb Ramp Inventory

Material / Type of Curb Ramp

Page # 3

Legend

Ramp Material

- Asphalt
- Concrete



SRPC Information
Prepared by Strafford Regional
Planning Commission
150 Wakefield Street #12
Rochester, NH 03867
603-994-3500

Map Author and Date
Author: Jackson Rand
Date: 11/14/2019

Data Disclaimer
Base features from NH GRANIT database. Digital data in NH GRANIT represent the efforts of the contributing agencies to record information from the cited source materials. Earth Systems Research Center (ESRC), under contract to the Office of Energy and Planning (OEP), and in consultation with cooperating agencies, maintains a continuing program to identify and correct errors in these data. Neither OEP nor ESRC make any claim as to the validity or reliability or to any implied uses of these data. Data should be used for planning purposes only. Data were derived from various sources and were updated at different timeframes, with varying levels of accuracy. Please notify SRPC of any errors or omissions.



Rochester Sidewalk, Crosswalk, and Curb Ramp Inventory

Material / Type of Curb Ramp

Page # 4

Legend

Ramp Material

- Asphalt
- Concrete



SRPC Information
Prepared by Strafford Regional
Planning Commission
150 Wakefield Street #12
Rochester, NH 03867
603-994-3500

Map Author and Date
Author: Jackson Rand
Date: 11/14/2019

Data Disclaimer
Base features from NH GRANIT database. Digital data in NH GRANIT represent the efforts of the contributing agencies to record information from the cited source materials. Earth Systems Research Center (ESRC), under contract to the Office of Energy and Planning (OEP), and in consultation with cooperating agencies, maintains a continuing program to identify and correct errors in these data. Neither OEP nor ESRC make any claim as to the validity or reliability or to any implied uses of these data. Data should be used for planning purposes only. Data were derived from various sources and were updated at different timeframes, with varying levels of accuracy. Please notify SRPC of any errors or omissions.



Rochester Sidewalk, Crosswalk, and Curb Ramp Inventory

Material / Type of Curb Ramp

Page # 5

Legend

Ramp Material

- Asphalt
- Concrete



SRPC Information
Prepared by Strafford Regional
Planning Commission
150 Wakefield Street #12
Rochester, NH 03867
603-994-3500

Map Author and Date
Author: Jackson Rand
Date: 11/14/2019

Data Disclaimer
Base features from NH GRANIT database. Digital data in NH GRANIT represent the efforts of the contributing agencies to record information from the cited source materials. Earth Systems Research Center (ESRC), under contract to the Office of Energy and Planning (OEP), and in consultation with cooperating agencies, maintains a continuing program to identify and correct errors in these data. Neither OEP nor ESRC make any claim as to the validity or reliability or to any implied uses of these data. Data should be used for planning purposes only. Data were derived from various sources and were updated at different timeframes, with varying levels of accuracy. Please notify SRPC of any errors or omissions.



Rochester Sidewalk, Crosswalk, and Curb Ramp Inventory

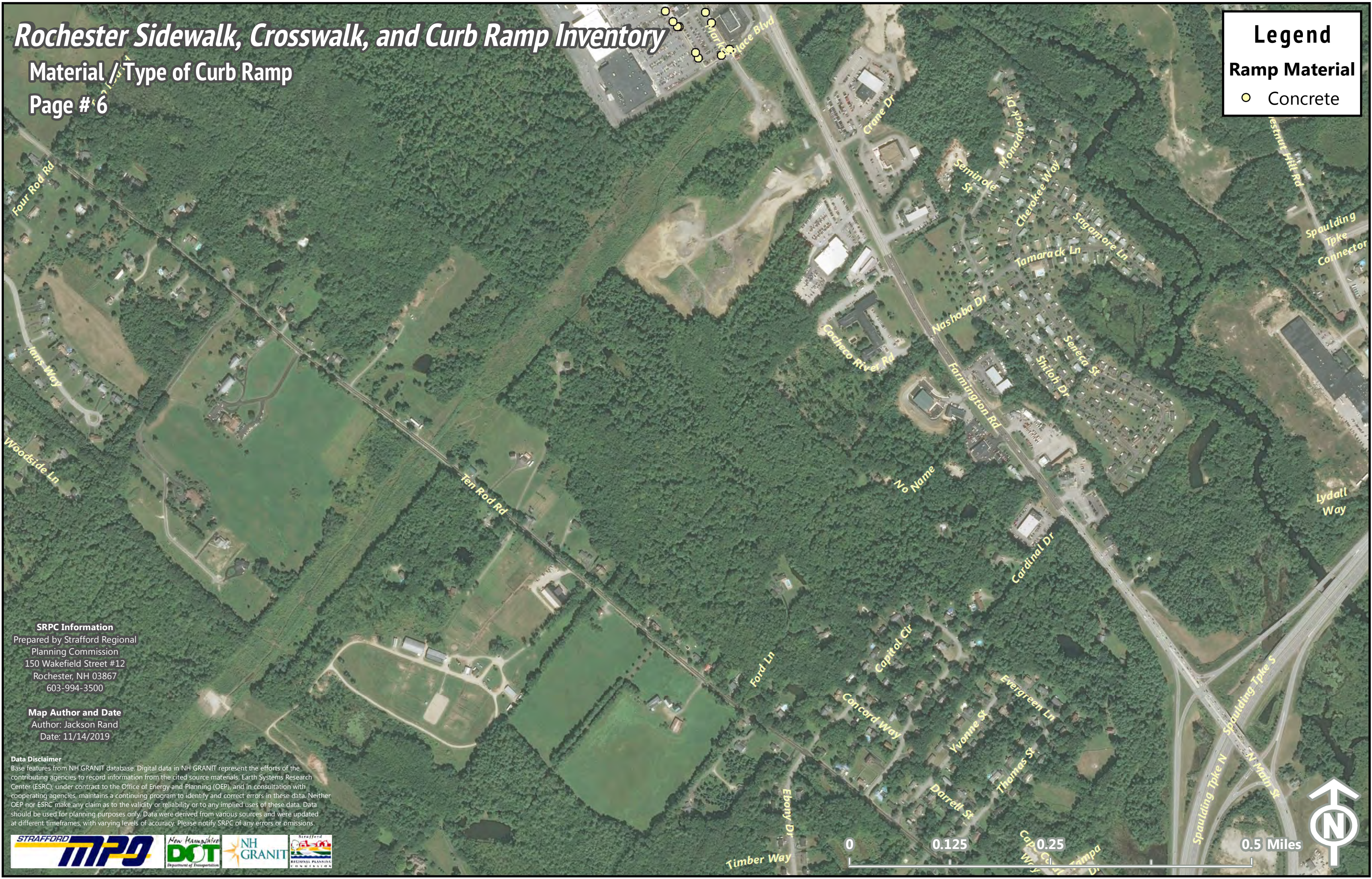
Material / Type of Curb Ramp

Page # 6

Legend

Ramp Material

- Concrete



SRPC Information
Prepared by Strafford Regional
Planning Commission
150 Wakefield Street #12
Rochester, NH 03867
603-994-3500

Map Author and Date
Author: Jackson Rand
Date: 11/14/2019

Data Disclaimer
Base features from NH GRANIT database. Digital data in NH GRANIT represent the efforts of the contributing agencies to record information from the cited source materials. Earth Systems Research Center (ESRC), under contract to the Office of Energy and Planning (OEP), and in consultation with cooperating agencies, maintains a continuing program to identify and correct errors in these data. Neither OEP nor ESRC make any claim as to the validity or reliability or to any implied uses of these data. Data should be used for planning purposes only. Data were derived from various sources and were updated at different timeframes, with varying levels of accuracy. Please notify SRPC of any errors or omissions.



Rochester Sidewalk, Crosswalk, and Curb Ramp Inventory

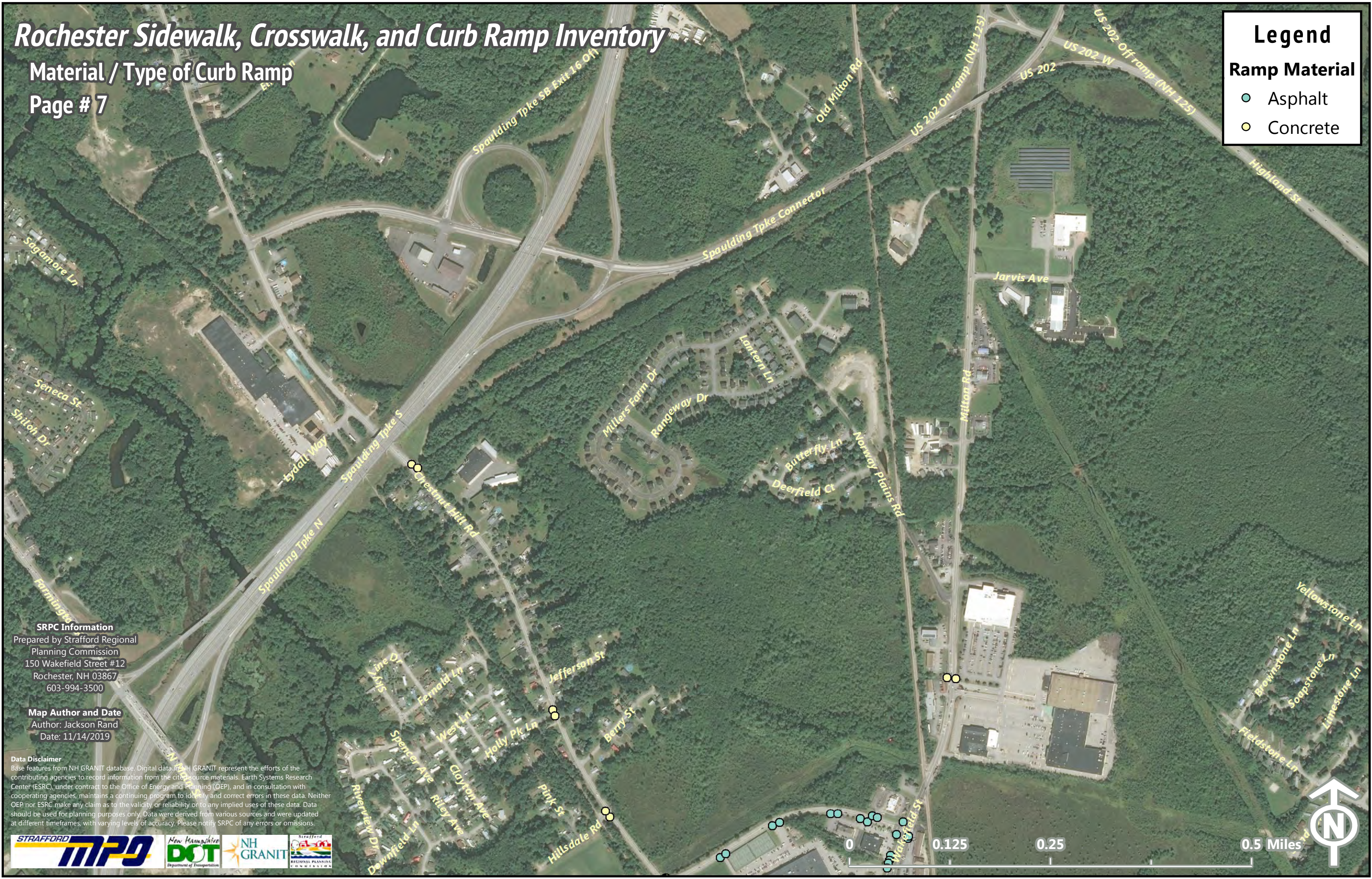
Material / Type of Curb Ramp

Page # 7

Legend

Ramp Material

- Asphalt
- Concrete



SRPC Information
Prepared by Strafford Regional
Planning Commission
150 Wakefield Street #12
Rochester, NH 03867
603-994-3500

Map Author and Date
Author: Jackson Rand
Date: 11/14/2019

Data Disclaimer
Base features from NH GRANIT database. Digital data in NH GRANIT represent the efforts of the contributing agencies to record information from the city source materials. Earth Systems Research Center (ESRC), under contract to the Office of Energy and Planning (OEP), and in consultation with cooperating agencies, maintains a continuing program to identify and correct errors in these data. Neither OEP nor ESRC make any claim as to the validity or reliability or to any implied uses of these data. Data should be used for planning purposes only. Data were derived from various sources and were updated at different timeframes, with varying levels of accuracy. Please notify SRPC of any errors or omissions.



Rochester Sidewalk, Crosswalk, and Curb Ramp Inventory

Material / Type of Curb Ramp

Page # 8

Legend

Ramp Material

- Asphalt
- Concrete



SRPC Information
Prepared by Strafford Regional
Planning Commission
150 Wakefield Street #12
Rochester, NH 03867
603-994-3500

Map Author and Date
Author: Jackson Rand
Date: 11/14/2019

Data Disclaimer
Base features from NH GRANIT database. Digital data in NH GRANIT represent the efforts of the contributing agencies to record information from the cited source materials. Earth Systems Research Center (ESRC), under contract to the Office of Energy and Planning (OEP), and in consultation with cooperating agencies, maintains a continuing program to identify and correct errors in these data. Neither OEP nor ESRC make any claim as to the validity or reliability or to any implied uses of these data. Data should be used for planning purposes only. Data were derived from various sources and were updated at different timeframes, with varying levels of accuracy. Please notify SRPC of any errors or omissions.



Rochester Sidewalk, Crosswalk, and Curb Ramp Inventory

Material / Type of Curb Ramp

Page # 9

Legend

Ramp Material

- Concrete



SRPC Information
Prepared by Strafford Regional
Planning Commission
150 Wakefield Street #12
Rochester, NH 03867
603-994-3500

Map Author and Date
Author: Jackson Rand
Date: 11/14/2019

Data Disclaimer
Base features from NH GRANIT database. Digital data in NH GRANIT represent the efforts of the contributing agencies to record information from the cited source materials. Earth Systems Research Center (ESRC), under contract to the Office of Energy and Planning (OEP), and in consultation with cooperating agencies, maintains a continuing program to identify and correct errors in these data. Neither OEP nor ESRC make any claim as to the validity or reliability or to any implied uses of these data. Data should be used for planning purposes only. Data were derived from various sources and were updated at different timeframes, with varying levels of accuracy. Please notify SRPC of any errors or omissions.



Rochester Sidewalk, Crosswalk, and Curb Ramp Inventory

Material / Type of Curb Ramp

Page # 10

Legend

Ramp Material

- Asphalt
- Concrete



SRPC Information
Prepared by Strafford Regional
Planning Commission
150 Wakefield Street #12
Rochester, NH 03867
603-994-3500

Map Author and Date
Author: Jackson Rand
Date: 11/14/2019

Data Disclaimer
Base features from NH GRANIT database. Digital data in NH GRANIT represent the efforts of the contributing agencies to record information from the cited source materials. Earth Systems Research Center (ESRC), under contract to the Office of Energy and Planning (OEP), and in consultation with cooperating agencies, maintains a continuing program to identify and correct errors in these data. Neither OEP nor ESRC make any claim as to the validity or reliability or to any implied uses of these data. Data should be used for planning purposes only. Data were derived from various sources and were updated at different timeframes, with varying levels of accuracy. Please notify SRPC of any errors or omissions.



Rochester Sidewalk, Crosswalk, and Curb Ramp Inventory

Material / Type of Curb Ramp

Page # 11

Legend

Ramp Material

- Asphalt
- Concrete



SRPC Information
Prepared by Strafford Regional
Planning Commission
150 Wakefield Street #12
Rochester, NH 03867
603-994-3500

Map Author and Date
Author: Jackson Rand
Date: 11/14/2019

Data Disclaimer
Base features from NH GRANIT database. Digital data in NH GRANIT represent the efforts of the contributing agencies to record information from the cited source materials. Earth Systems Research Center (ESRC), under contract to the Office of Energy and Planning (OEP), and in consultation with cooperating agencies, maintains a continuing program to identify and correct errors in these data. OEP nor ESRC make any claim as to the validity or reliability or to any implied uses of these data. Data should be used for planning purposes only. Data were derived from various sources and were updated at different timeframes, with varying levels of accuracy. Please notify SRPC of any errors or omissions.



Rochester Sidewalk, Crosswalk, and Curb Ramp Inventory

Material / Type of Curb Ramp

Page # 12

Legend

Ramp Material

- Asphalt
- Concrete



SRPC Information
Prepared by Strafford Regional
Planning Commission
150 Wakefield Street #12
Rochester, NH 03867
603-994-3500

Map Author and Date
Author: Jackson Rand
Date: 11/14/2019

Data Disclaimer
Base features from NH GRANIT database. Digital data in NH GRANIT represent the efforts of the contributing agencies to record information from the cited source materials. Earth Systems Research Center (ESRC), under contract to the Office of Energy and Planning (OEP), and in consultation with cooperating agencies, maintains a continuing program to identify and correct errors in these data. Neither OEP nor ESRC make any claim as to the validity or reliability of any implied uses of these data. Data should be used for planning purposes only. Data were derived from various sources and were updated at different timeframes, with varying levels of accuracy. Please notify SRPC of any errors or omissions.



Rochester Sidewalk, Crosswalk, and Curb Ramp Inventory

Material / Type of Curb Ramp

Page # 13

Legend

Ramp Material

- Asphalt
- Concrete



SRPC Information
Prepared by Strafford Regional
Planning Commission
150 Wakefield Street #12
Rochester, NH 03867
603-994-3500

Map Author and Date
Author: Jackson Rand
Date: 11/14/2019

Data Disclaimer
Base features from NH GRANIT database. Digital data in NH GRANIT represent the efforts of the contributing agencies to record information from the cited source materials. Earth Systems Research Center (ESRC), under contract to the Office of Energy and Planning (OEP), and in consultation with cooperating agencies, maintains a continuing program to identify and correct errors in these data. Neither OEP nor ESRC make any claim as to the validity or reliability or to any implied uses of these data. Data should be used for planning purposes only. Data were derived from various sources and were updated at different timeframes, with varying levels of accuracy. Please notify SRPC of any errors or omissions.



Rochester Sidewalk, Crosswalk, and Curb Ramp Inventory

Material/Type of Curb Ramp

Page # 14

Legend

Ramp Material

- Asphalt
- Concrete



SRPC Information
Prepared by Strafford Regional
Planning Commission
150 Wakefield Street #12
Rochester, NH 03867
603-994-3500

Map Author and Date
Author: Jackson Rand
Date: 11/14/2019

Data Disclaimer
Base features from NH GRANIT database. Digital data in NH GRANIT represent the efforts of the contributing agencies to record information from the cited source maps. Earth Systems Research Center (ESRC), under contract to the Office of Energy and Planning, provided technical consultation with cooperating agencies, maintains a continuing program to identify and correct errors in these data. Neither ESRC nor ESRC make any claim as to the validity, or reliability, or accuracy of these data. Data should be used for planning purposes only. Data were derived from various sources and were updated at different timeframes, with varying levels of accuracy. Please notify us of any errors or omissions.



Rochester Sidewalk, Crosswalk, and Curb Ramp Inventory

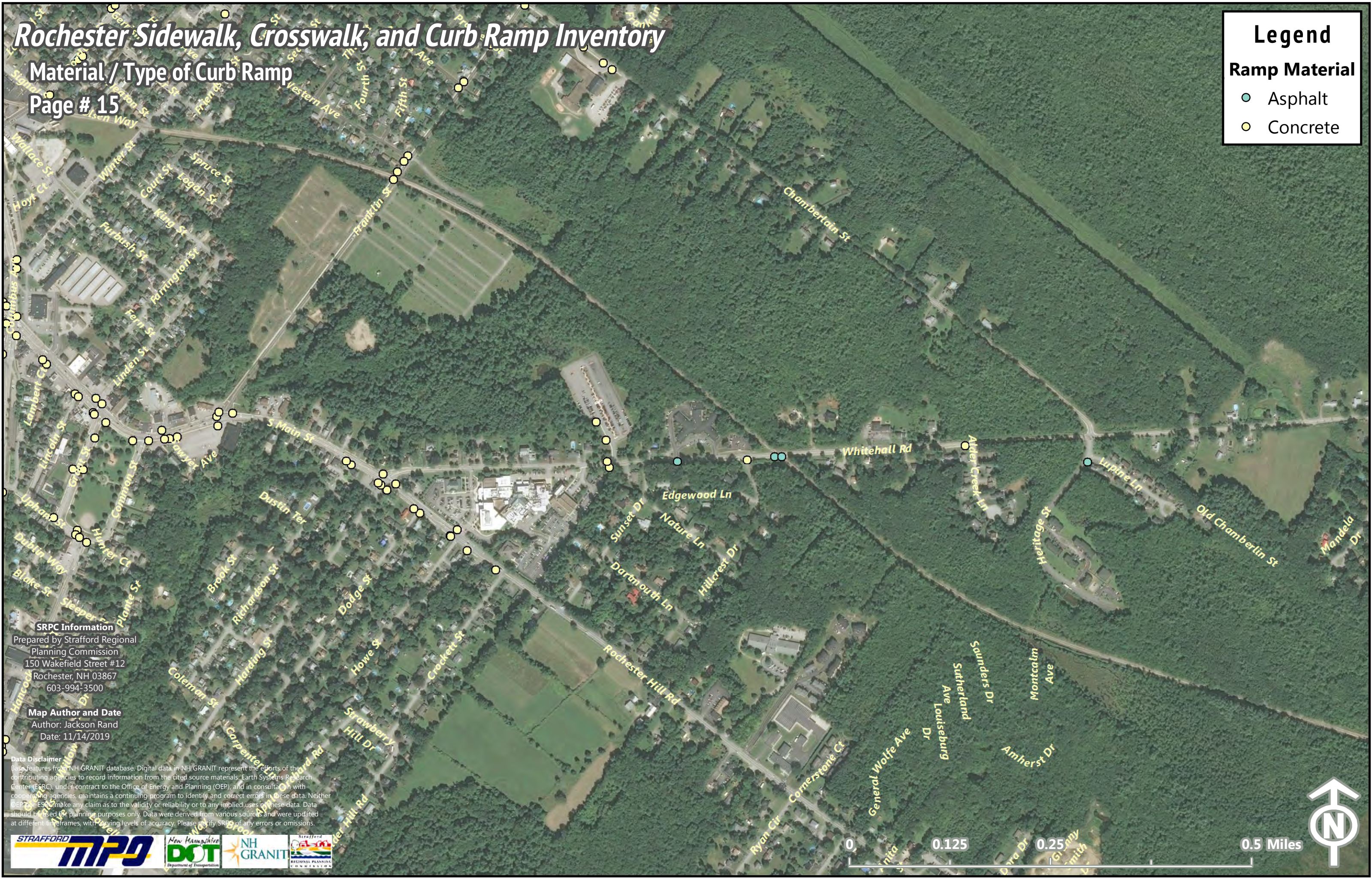
Material / Type of Curb Ramp

Page # 15

Legend

Ramp Material

- Asphalt
- Concrete



SRPC Information
Prepared by Strafford Regional
Planning Commission
150 Wakefield Street #12
Rochester, NH 03867
603-994-3500

Map Author and Date
Author: Jackson Rand
Date: 11/14/2019

Data Disclaimer
Base features from NH GRANIT database. Digital data in NH GRANIT represent the efforts of the contributing agencies to record information from the cited source materials. Earth Systems Research Center (ESRC), under contract to the Office of Energy and Planning (OEP), and in consultation with cooperating agencies, maintains a continuing program to identify and correct errors in these data. Neither OEP nor ESRC make any claim as to the validity or reliability or to any implied uses of these data. Data should be used for planning purposes only. Data were derived from various sources and were updated at different timeframes, with varying levels of accuracy. Please notify SRPC of any errors or omissions.

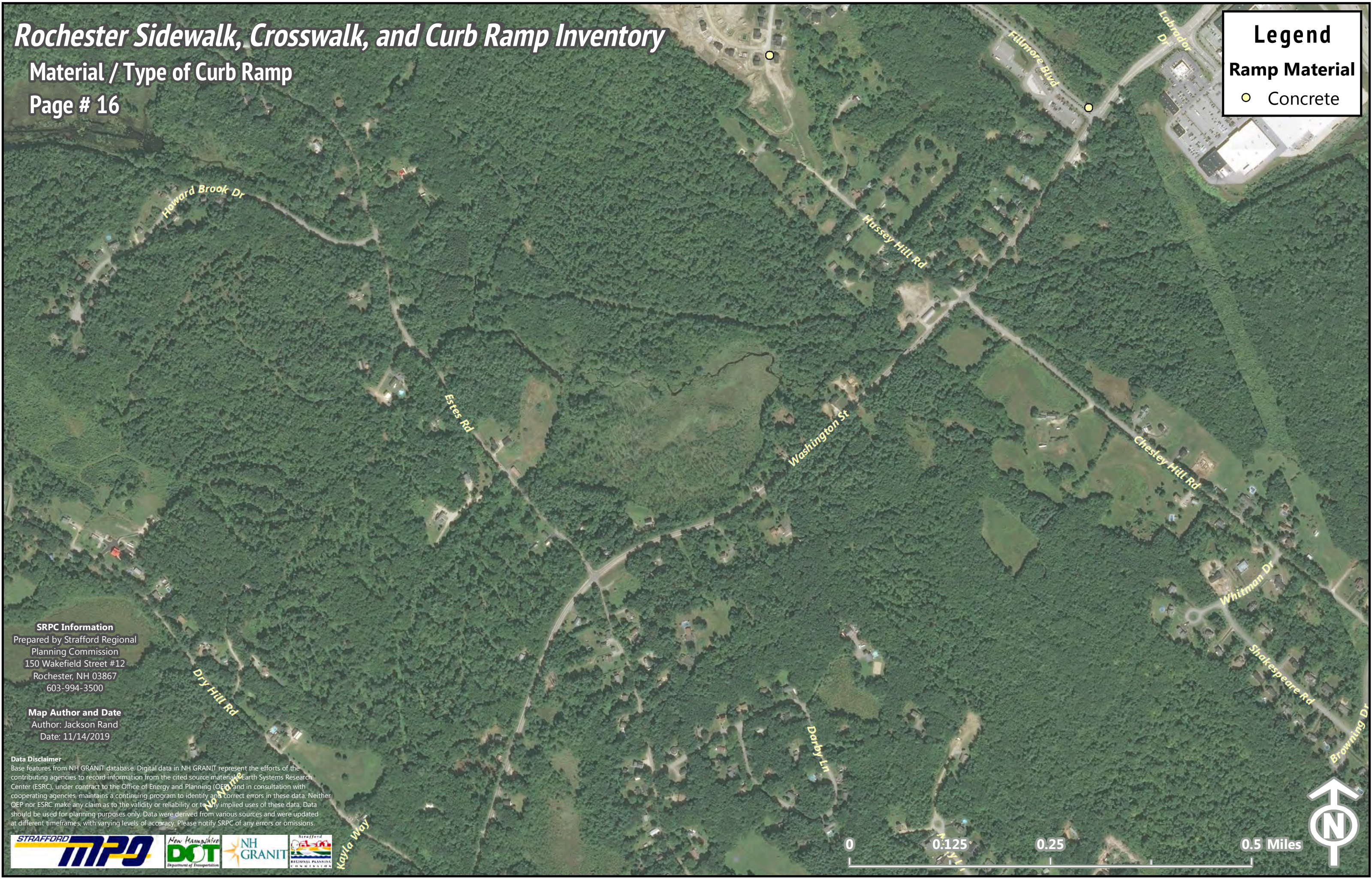


Rochester Sidewalk, Crosswalk, and Curb Ramp Inventory

Material / Type of Curb Ramp

Page # 16

Legend
Ramp Material
○ Concrete



SRPC Information
Prepared by Strafford Regional
Planning Commission
150 Wakefield Street #12
Rochester, NH 03867
603-994-3500

Map Author and Date
Author: Jackson Rand
Date: 11/14/2019

Data Disclaimer
Base features from NH GRANIT database. Digital data in NH GRANIT represent the efforts of the contributing agencies to record information from the cited source materials. Earth Systems Research Center (ESRC), under contract to the Office of Energy and Planning (OEP) and in consultation with cooperating agencies, maintains a continuing program to identify and correct errors in these data. Neither OEP nor ESRC make any claim as to the validity or reliability or to any implied uses of these data. Data should be used for planning purposes only. Data were derived from various sources and were updated at different timeframes, with varying levels of accuracy. Please notify SRPC of any errors or omissions.



Rochester Sidewalk, Crosswalk, and Curb Ramp Inventory

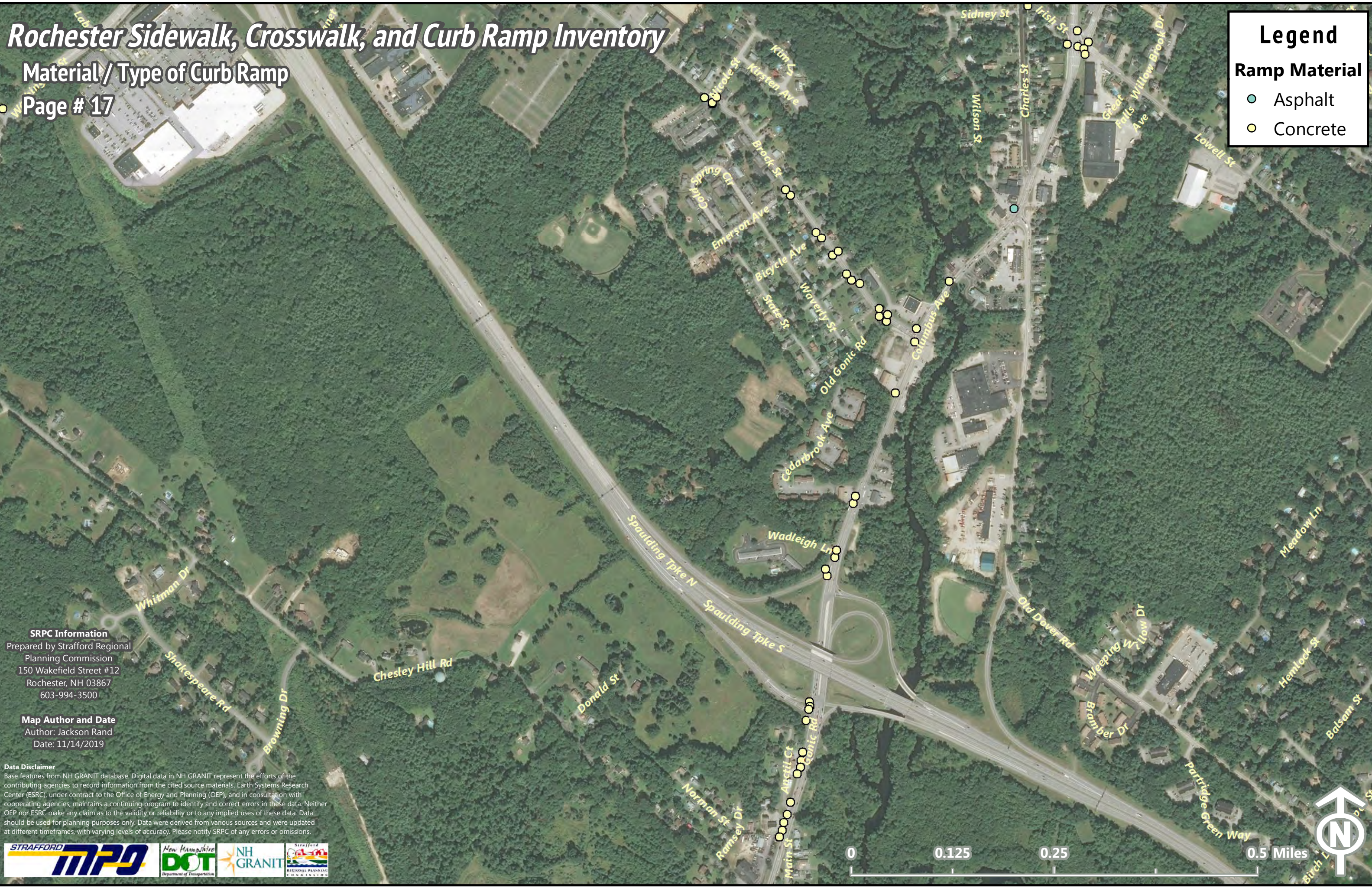
Material / Type of Curb Ramp

Page # 17

Legend

Ramp Material

- Asphalt
- Concrete



SRPC Information
Prepared by Strafford Regional
Planning Commission
150 Wakefield Street #12
Rochester, NH 03867
603-994-3500

Map Author and Date
Author: Jackson Rand
Date: 11/14/2019

Data Disclaimer
Base features from NH GRANIT database. Digital data in NH GRANIT represent the efforts of the contributing agencies to record information from the cited source materials. Earth Systems Research Center (ESRC), under contract to the Office of Energy and Planning (OEP), and in consultation with cooperating agencies, maintains a continuing program to identify and correct errors in these data. Neither OEP nor ESRC make any claim as to the validity or reliability or to any implied uses of these data. Data should be used for planning purposes only. Data were derived from various sources and were updated at different timeframes, with varying levels of accuracy. Please notify SRPC of any errors or omissions.



Rochester Sidewalk, Crosswalk, and Curb Ramp Inventory

Material / Type of Curb Ramp

Page # 18

Legend

Ramp Material

- Concrete



SRPC Information
Prepared by Strafford Regional
Planning Commission
150 Wakefield Street #12
Rochester, NH 03867
603-994-3500

Map Author and Date
Author: Jackson Rand
Date: 11/14/2019

Data Disclaimer
Base features from NH GRANIT database. Digital data in NH GRANIT represent the efforts of the contributing agencies to record information from the cited source materials. Earth Systems Research Center (ESRC), under contract to the Office of Energy and Planning (OEP), and in consultation with cooperating agencies, maintains a continuing program to identify and correct errors in these data. Neither OEP nor ESRC make any claim as to the validity or reliability of, or any implied uses of these data. Data should be used for planning purposes only. Data were derived from various sources and were updated at different timeframes with varying levels of accuracy. Please notify SRPC of any errors or omissions.



Rochester Sidewalk, Crosswalk, and Curb Ramp Inventory

Material / Type of Curb Ramp

Page # 19

Legend

Ramp Material

- Asphalt
- Concrete



SRPC Information
Prepared by Strafford Regional
Planning Commission
150 Wakefield Street #12
Rochester, NH 03867
603-994-3500

Map Author and Date
Author: Jackson Rand
Date: 11/14/2019

Data Disclaimer
Base features from NH GRANIT database. Digital data in NH GRANIT represent the efforts of the contributing agencies to record information from the cited source materials. Earth Systems Research Center (ESRC), under contract to the Office of Energy and Planning (OEP), and in consultation with cooperating agencies, maintains a continuing program to identify and correct errors in these data. Neither OEP nor ESRC make any claim as to the validity or reliability or to any implied uses of these data. Data should be used for planning purposes only. Data were derived from various sources and were updated at different timeframes, with varying levels of accuracy. Please notify SRPC of any errors or omissions.



Rochester Sidewalk, Crosswalk, and Curb Ramp Inventory

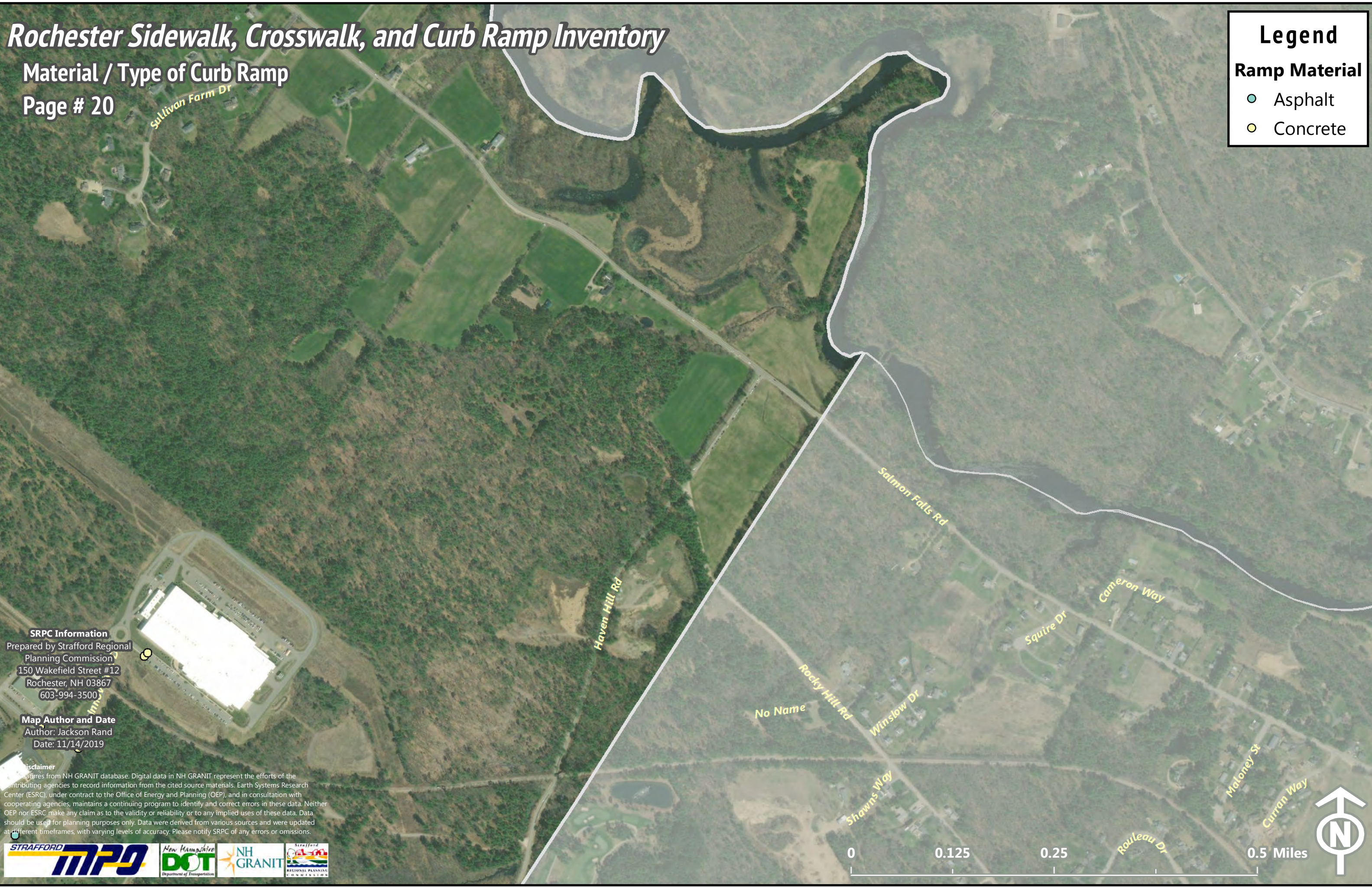
Material / Type of Curb Ramp

Page # 20

Legend

Ramp Material

- Asphalt
- Concrete



SRPC Information
Prepared by Strafford Regional
Planning Commission
150 Wakefield Street #12
Rochester, NH 03867
603-994-3500

Map Author and Date
Author: Jackson Rand
Date: 11/14/2019

Disclaimer
Data derived from NH GRANIT database. Digital data in NH GRANIT represent the efforts of the contributing agencies to record information from the cited source materials. Earth Systems Research Center (ESRC), under contract to the Office of Energy and Planning (OEP), and in consultation with cooperating agencies, maintains a continuing program to identify and correct errors in these data. Neither OEP nor ESRC make any claim as to the validity or reliability or to any implied uses of these data. Data should be used for planning purposes only. Data were derived from various sources and were updated at different timeframes, with varying levels of accuracy. Please notify SRPC of any errors or omissions.

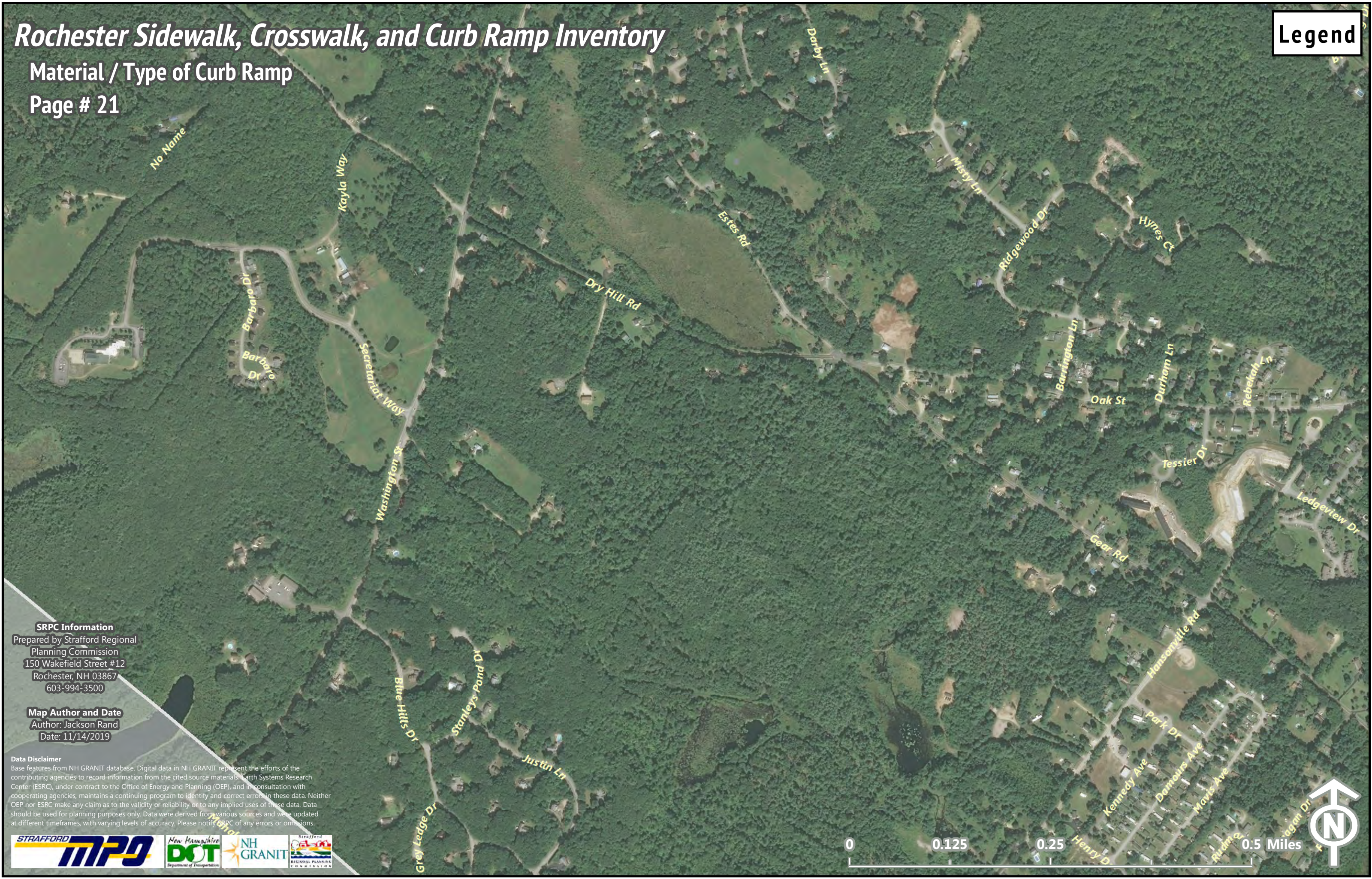


Rochester Sidewalk, Crosswalk, and Curb Ramp Inventory

Legend

Material / Type of Curb Ramp

Page # 21



SRPC Information
Prepared by Strafford Regional
Planning Commission
150 Wakefield Street #12
Rochester, NH 03867
603-994-3500

Map Author and Date
Author: Jackson Rand
Date: 11/14/2019

Data Disclaimer
Base features from NH GRANIT database. Digital data in NH GRANIT represent the efforts of the contributing agencies to record information from the cited source materials. Earth Systems Research Center (ESRC), under contract to the Office of Energy and Planning (OEP), and in consultation with cooperating agencies, maintains a continuing program to identify and correct errors in these data. Neither OEP nor ESRC make any claim as to the validity or reliability or to any implied uses of these data. Data should be used for planning purposes only. Data were derived from various sources and were updated at different timeframes, with varying levels of accuracy. Please notify SRPC of any errors or omissions.



Rochester Sidewalk, Crosswalk, and Curb Ramp Inventory

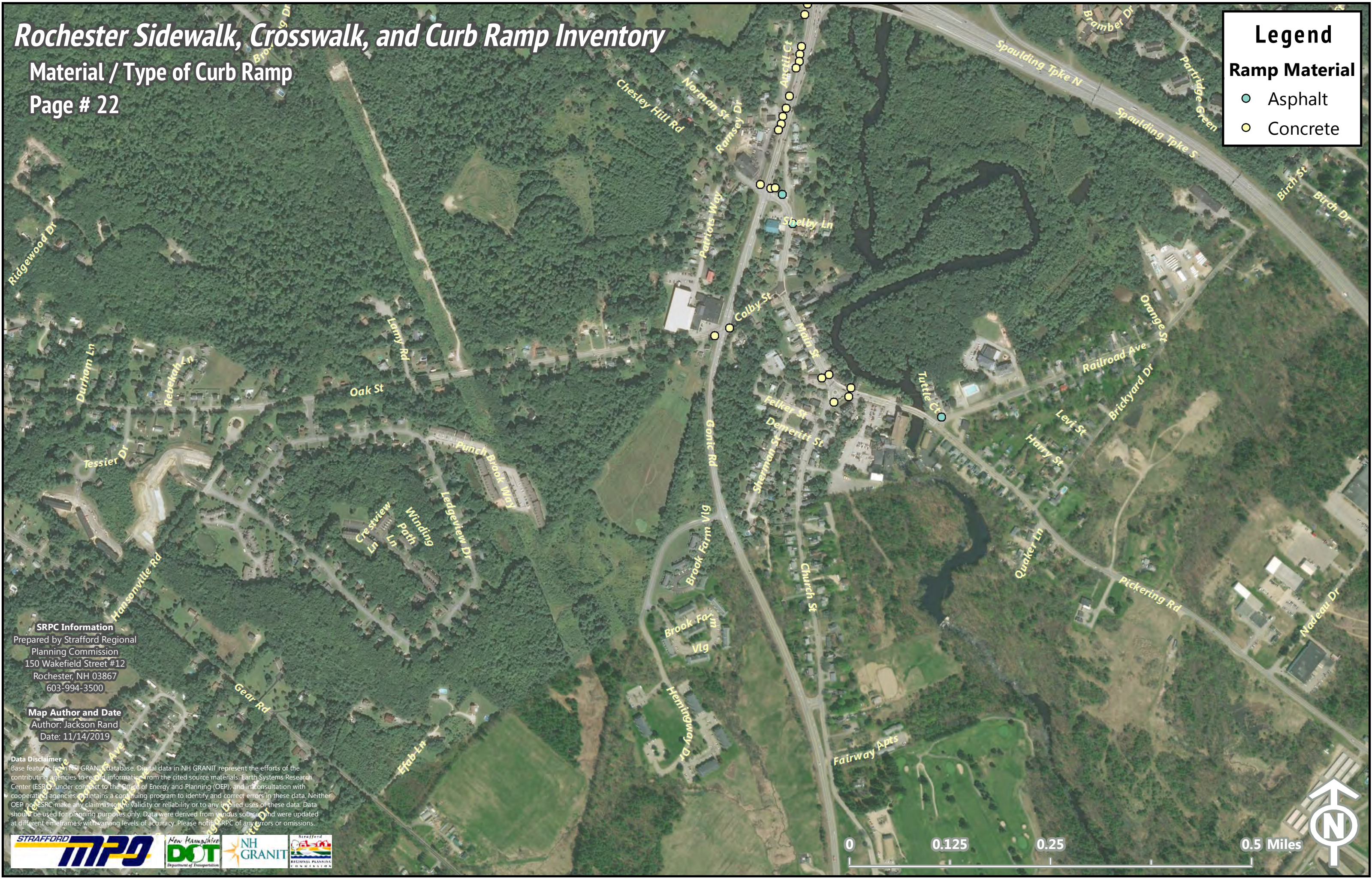
Material / Type of Curb Ramp

Page # 22

Legend

Ramp Material

- Asphalt
- Concrete



SRPC Information
Prepared by Strafford Regional
Planning Commission
150 Wakefield Street #12
Rochester, NH 03867
603-994-3500

Map Author and Date
Author: Jackson Rand
Date: 11/14/2019

Data Disclaimer
Base features from NH GRANIT database. Digital data in NH GRANIT represent the efforts of the contributing agencies to record information from the cited source materials. Earth Systems Research Center (ESRC), under contract to the Office of Energy and Planning (OEP), and in consultation with cooperating agencies, maintains a continuing program to identify and correct errors in these data. Neither OEP nor ESRC make any claims to the validity or reliability or to any implied uses of these data. Data should be used for planning purposes only. Data were derived from various sources and were updated at different timeframes with varying levels of accuracy. Please notify SRPC of any errors or omissions.



Rochester Sidewalk, Crosswalk, and Curb Ramp Inventory

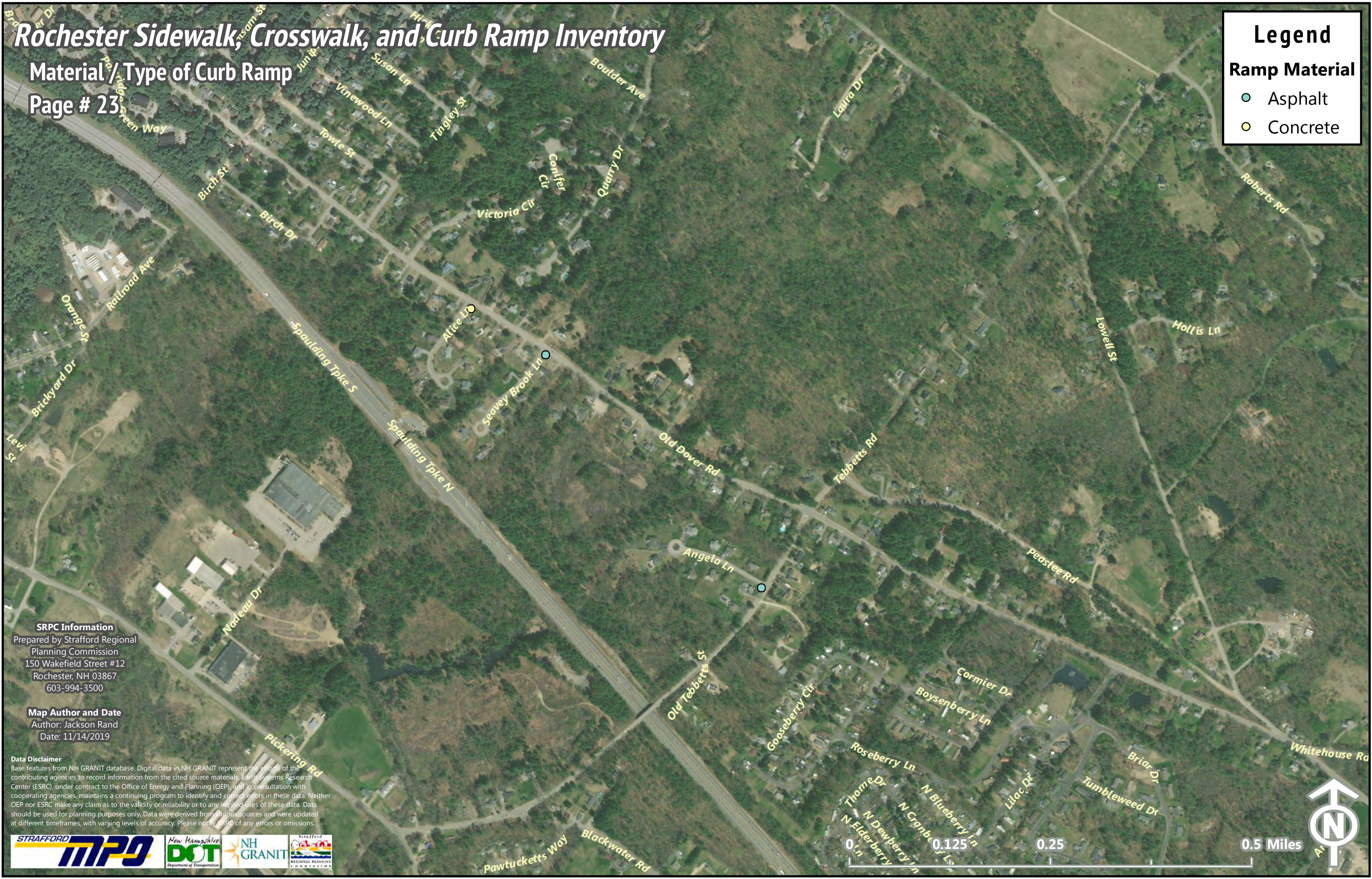
Material / Type of Curb Ramp

Page # 23

Legend

Ramp Material

- Asphalt
- Concrete



SRPC Information
Prepared by Strafford Regional
Planning Commission
150 Wakefield Street #12
Rochester, NH 03867
603-994-3500

Map Author and Date
Author: Jackson Rand
Date: 11/14/2019

Data Disclaimer
Base features from NH GRANIT database. Digital data in NH GRANIT represent the efforts of the contributing agencies to record information from the cited source materials. Earth Systems Research Center (ESRC), under contract to the Office of Energy and Planning (OEP), and in consultation with cooperating agencies, maintains a continuing program to identify and correct errors in these data. Neither OEP nor ESRC make any claim as to the validity or reliability or to any implied uses of these data. Data should be used for planning purposes only. Data were derived from various sources and were updated at different timeframes, with varying levels of accuracy. Please notify SRPC of any errors or omissions.



0.125 0.25 0.5 Miles

Rochester Sidewalk, Crosswalk, and Curb Ramp Inventory

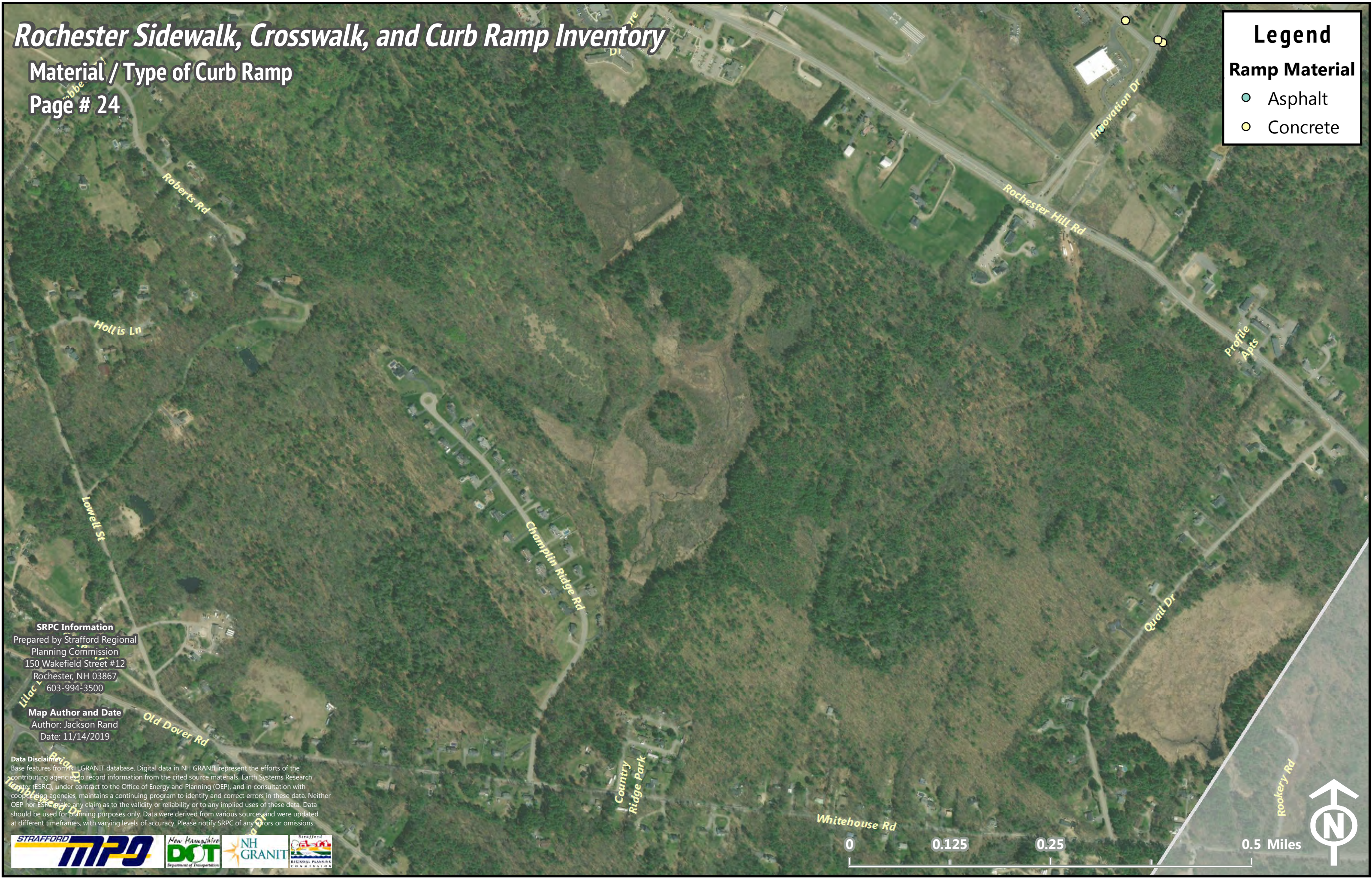
Material / Type of Curb Ramp

Page # 24

Legend

Ramp Material

- Asphalt
- Concrete



SRPC Information
Prepared by Strafford Regional
Planning Commission
150 Wakefield Street #12
Rochester, NH 03867
603-994-3500

Map Author and Date
Author: Jackson Rand
Date: 11/14/2019

Data Disclaimer
Base features from NH GRANIT database. Digital data in NH GRANIT represent the efforts of the contributing agencies to record information from the cited source materials. Earth Systems Research Center (ESRC), under contract to the Office of Energy and Planning (OEP), and in consultation with cooperating agencies, maintains a continuing program to identify and correct errors in these data. Neither OEP nor ESRC make any claim as to the validity or reliability or to any implied uses of these data. Data should be used for planning purposes only. Data were derived from various sources and were updated at different timeframes, with varying levels of accuracy. Please notify SRPC of any errors or omissions.



0.5 Miles

