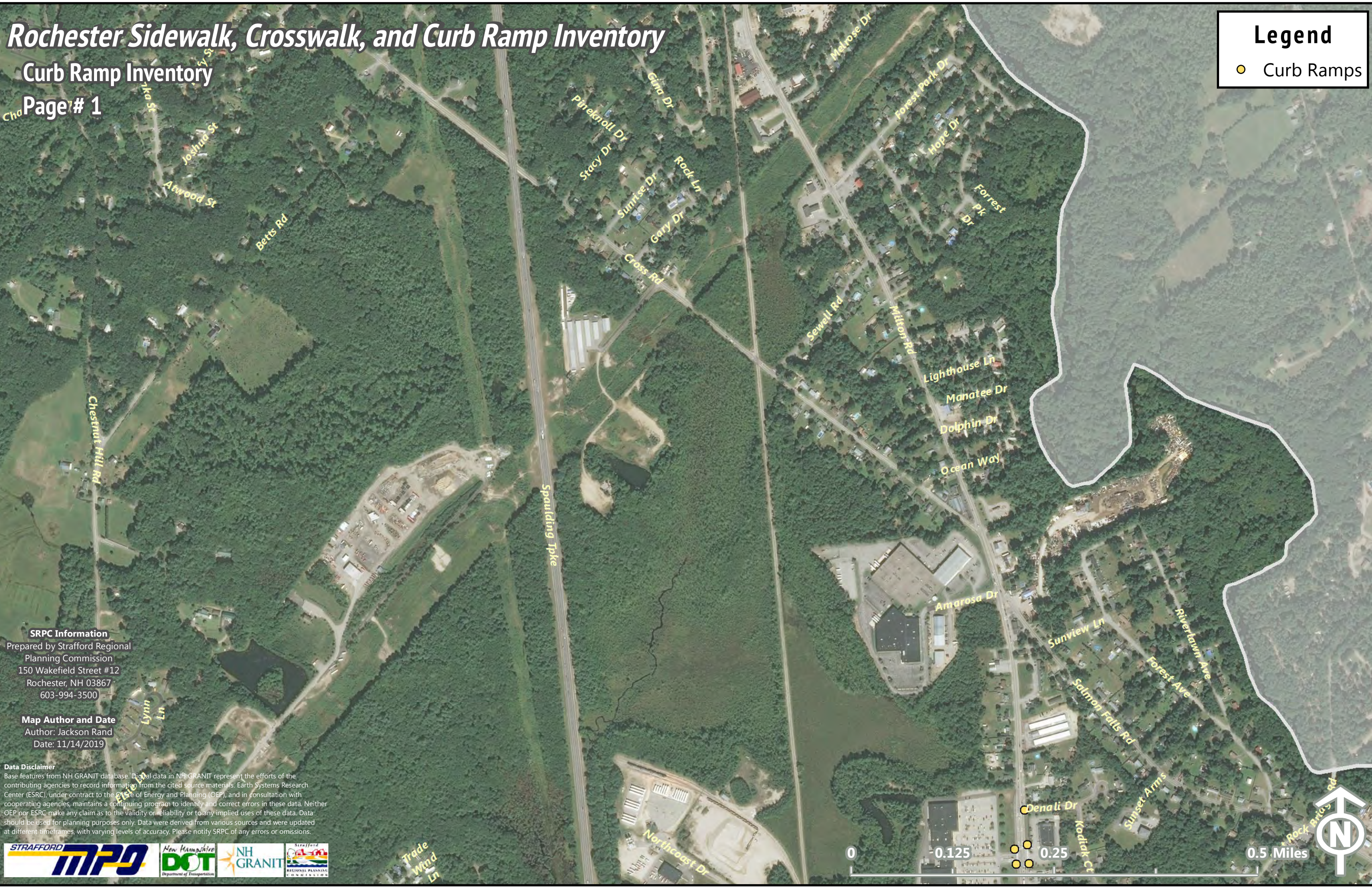


Rochester Sidewalk, Crosswalk, and Curb Ramp Inventory

Curb Ramp Inventory

Page # 1

Legend
● Curb Ramps



SRPC Information
Prepared by Strafford Regional
Planning Commission
150 Wakefield Street #12
Rochester, NH 03867
603-994-3500

Map Author and Date
Author: Jackson Rand
Date: 11/14/2019

Data Disclaimer
Base features from NH GRANIT database. Digital data in NH GRANIT represent the efforts of the contributing agencies to record information from the cited source materials. Earth Systems Research Center (ESRC), under contract to the Office of Energy and Planning (OEP), and in consultation with cooperating agencies, maintains a continuing program to identify and correct errors in these data. Neither OEP nor ESRC make any claim as to the validity or reliability or to any implied uses of these data. Data should be used for planning purposes only. Data were derived from various sources and were updated at different timeframes, with varying levels of accuracy. Please notify SRPC of any errors or omissions.



0 0.125 0.25 0.5 Miles

Rochester Sidewalk, Crosswalk, and Curb Ramp Inventory

Curb Ramp Inventory

Page # 2

Legend

- Curb Ramps



SRPC Information
Prepared by Strafford Regional
Planning Commission
150 Wakefield Street #12
Rochester, NH 03867
603-994-3500

Map Author and Date
Author: Jackson Rand
Date: 11/14/2019

Data Disclaimer
Base features from NH GRANIT database. Digital data in NH GRANIT represent the efforts of the contributing agencies to record information from the cited source materials. Earth Systems Research Center (ESRC), under contract to the Office of Energy and Planning (OEP), and in consultation with cooperating agencies, maintains a continuing program to identify and correct errors in these data. Neither OEP nor ESRC make any claim as to the validity or reliability or to any implied uses of these data. Data should be used for planning purposes only. Data were derived from various sources and were updated at different timeframes, with varying levels of accuracy. Please notify SRPC of any errors or omissions.



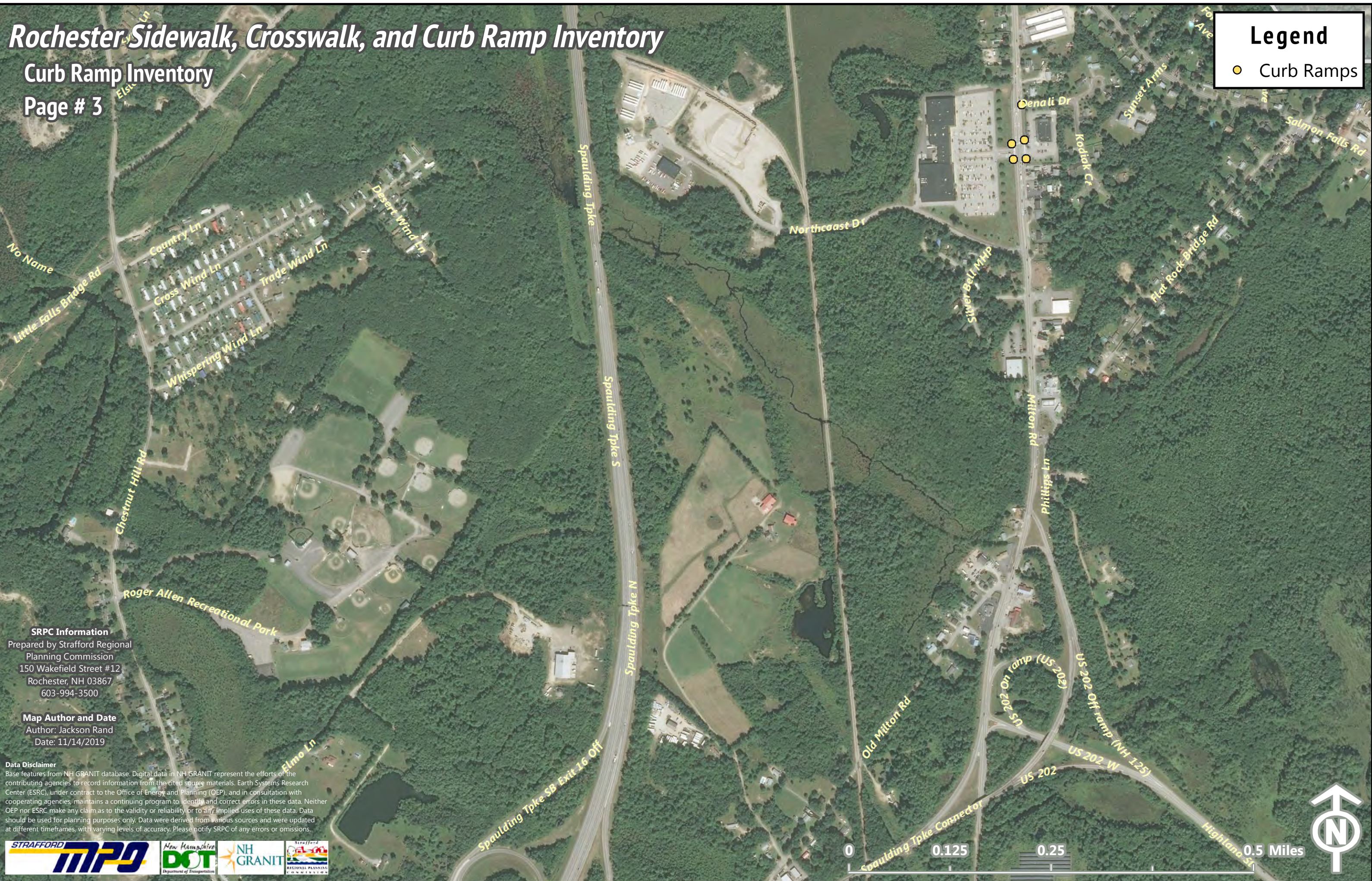
Rochester Sidewalk, Crosswalk, and Curb Ramp Inventory

Curb Ramp Inventory

Page # 3

Legend

- Curb Ramps



SRPC Information
Prepared by Strafford Regional
Planning Commission
150 Wakefield Street #12
Rochester, NH 03867
603-994-3500

Map Author and Date
Author: Jackson Rand
Date: 11/14/2019

Data Disclaimer
Base features from NH GRANIT database. Digital data in NH GRANIT represent the efforts of the contributing agencies to record information from the cited source materials. Earth Systems Research Center (ESRC), under contract to the Office of Energy and Planning (OEP), and in consultation with cooperating agencies, maintains a continuing program to identify and correct errors in these data. Neither OEP nor ESRC make any claim as to the validity or reliability or to any implied uses of these data. Data should be used for planning purposes only. Data were derived from various sources and were updated at different timeframes, with varying levels of accuracy. Please notify SRPC of any errors or omissions.



Rochester Sidewalk, Crosswalk, and Curb Ramp Inventory

Curb Ramp Inventory

Page # 4

Legend

- Curb Ramps



SRPC Information
Prepared by Strafford Regional
Planning Commission
150 Wakefield Street #12
Rochester, NH 03867
603-994-3500

Map Author and Date
Author: Jackson Rand
Date: 11/14/2019

Data Disclaimer
Base features from NH GRANIT database. Digital data in NH GRANIT represent the efforts of the contributing agencies to record information from the cited source materials. Earth Systems Research Center (ESRC), under contract to the Office of Energy and Planning (OEP), and in consultation with cooperating agencies, maintains a continuing program to identify and correct errors in these data. Neither OEP nor ESRC make any claim as to the validity or reliability or to any implied uses of these data. Data should be used for planning purposes only. Data were derived from various sources and were updated at different timeframes, with varying levels of accuracy. Please notify SRPC of any errors or omissions.



Rochester Sidewalk, Crosswalk, and Curb Ramp Inventory

Curb Ramp Inventory

Page # 5

Legend

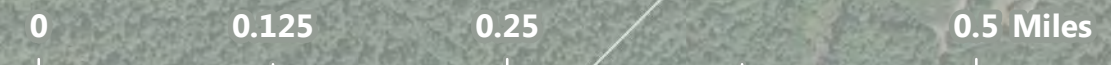
● Curb Ramps



SRPC Information
Prepared by Strafford Regional
Planning Commission
150 Wakefield Street #12
Rochester, NH 03867
603-994-3500

Map Author and Date
Author: Jackson Rand
Date: 11/14/2019

Data Disclaimer
Base features from NH GRANIT database. Digital data in NH GRANIT represent the efforts of the contributing agencies to record information from the cited source materials. Earth Systems Research Center (ESRC), under contract to the Office of Energy and Planning (OEP), and in consultation with cooperating agencies, maintains a continuing program to identify and correct errors in these data. Neither OEP nor ESRC make any claim as to the validity or reliability or to any implied uses of these data. Data should be used for planning purposes only. Data were derived from various sources and were updated at different timeframes, with varying levels of accuracy. Please notify SRPC of any errors or omissions.



Lebanon
Berwick

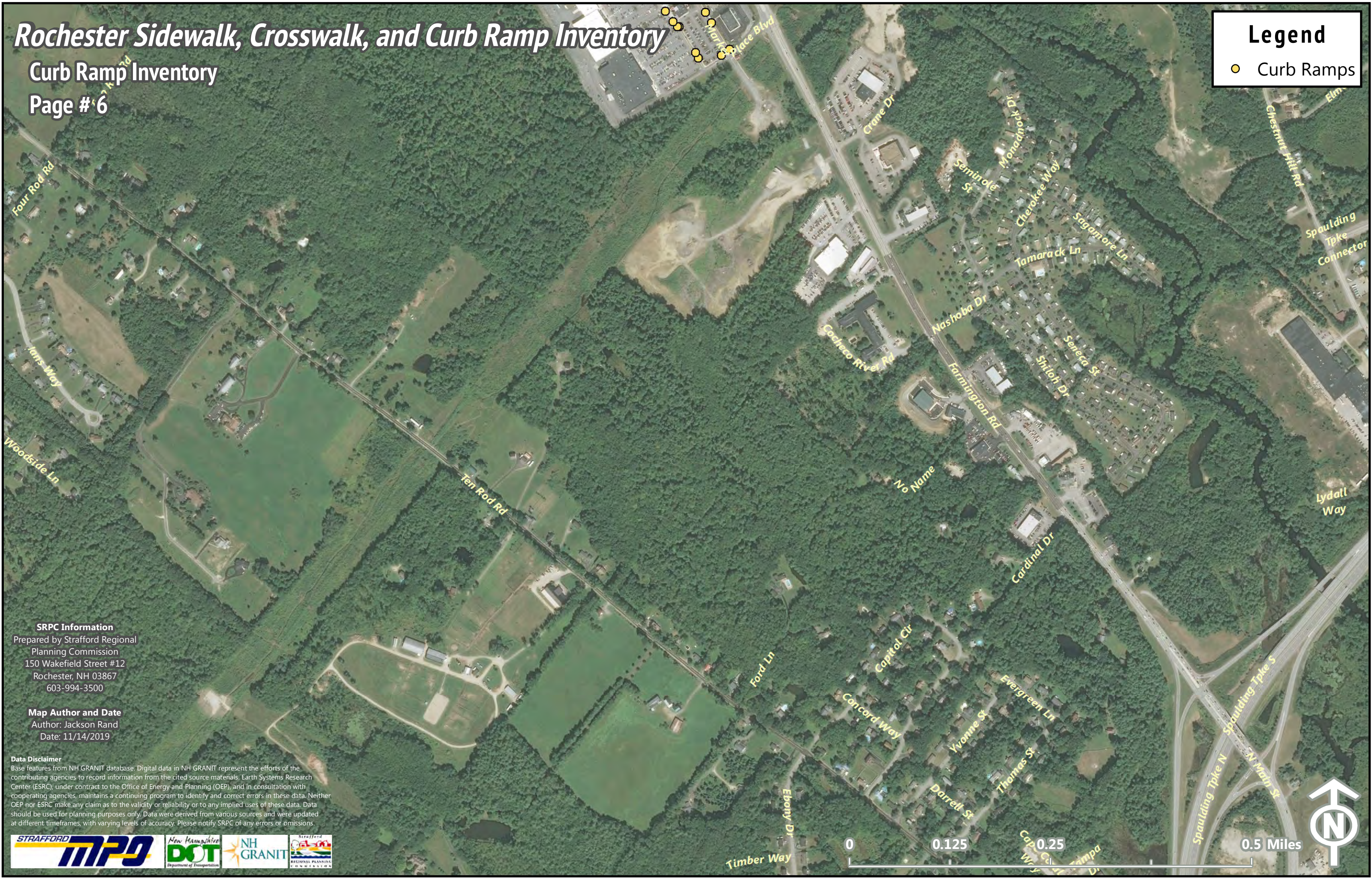
Rochester Sidewalk, Crosswalk, and Curb Ramp Inventory

Curb Ramp Inventory

Page # 6

Legend

- Curb Ramps



SRPC Information
Prepared by Strafford Regional
Planning Commission
150 Wakefield Street #12
Rochester, NH 03867
603-994-3500

Map Author and Date
Author: Jackson Rand
Date: 11/14/2019

Data Disclaimer
Base features from NH GRANIT database. Digital data in NH GRANIT represent the efforts of the contributing agencies to record information from the cited source materials. Earth Systems Research Center (ESRC), under contract to the Office of Energy and Planning (OEP), and in consultation with cooperating agencies, maintains a continuing program to identify and correct errors in these data. Neither OEP nor ESRC make any claim as to the validity or reliability or to any implied uses of these data. Data should be used for planning purposes only. Data were derived from various sources and were updated at different timeframes, with varying levels of accuracy. Please notify SRPC of any errors or omissions.



Rochester Sidewalk, Crosswalk, and Curb Ramp Inventory

Curb Ramp Inventory

Page # 7

Legend
● Curb Ramps



SRPC Information
Prepared by Strafford Regional
Planning Commission
150 Wakefield Street #12
Rochester, NH 03867
603-994-3500

Map Author and Date
Author: Jackson Rand
Date: 11/14/2019

Data Disclaimer
Base features from NH GRANIT database. Digital data in NH GRANIT represent the efforts of the contributing agencies to record information from the city source materials. Earth Systems Research Center (ESRC), under contract to the Office of Energy and Planning (OEP), and in consultation with cooperating agencies, maintains a continuing program to identify and correct errors in these data. Neither OEP nor ESRC make any claim as to the validity or reliability or to any implied uses of these data. Data should be used for planning purposes only. Data were derived from various sources and were updated at different timeframes, with varying levels of accuracy. Please notify SRPC of any errors or omissions.

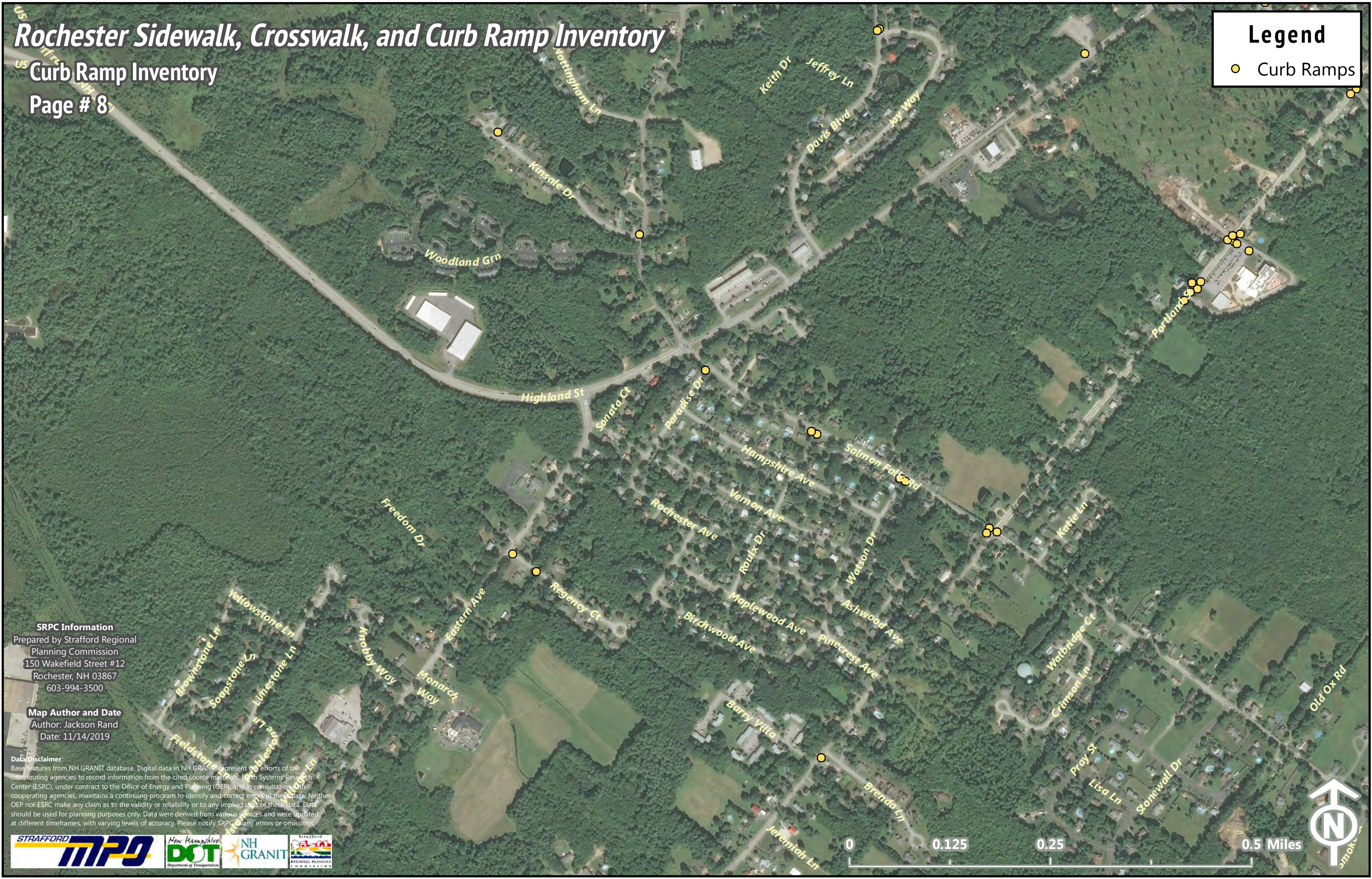


Rochester Sidewalk, Crosswalk, and Curb Ramp Inventory

Curb Ramp Inventory

Page # 8

Legend
● Curb Ramps



SRPC Information
Prepared by Strafford Regional
Planning Commission
150 Wakefield Street #12
Rochester, NH 03867
603-994-3500

Map Author and Date
Author: Jackson Rand
Date: 11/14/2019

Data Disclaimer
Base features from NH GRANIT database. Digital data in NH GRANIT represent the efforts of the contributing agencies to record information from the cited source materials. Earth Systems Research Center (ESRC), under contract to the Office of Energy and Planning (OEP), and in consultation with cooperating agencies, maintains a continuing program to identify and correct errors in this data. Neither OEP nor ESRC make any claim as to the validity or reliability or to any implied uses of these data. Data should be used for planning purposes only. Data were derived from various sources and were updated at different timeframes, with varying levels of accuracy. Please notify SRPC of any errors or omissions.



Rochester Sidewalk, Crosswalk, and Curb Ramp Inventory

Curb Ramp Inventory

Page # 9

Legend

● Curb Ramps



SRPC Information

Prepared by Strafford Regional
Planning Commission
150 Wakefield Street #12
Rochester, NH 03867
603-994-3500

Map Author and Date

Author: Jackson Rand
Date: 11/14/2019

Data Disclaimer

Base features from NH GRANIT database. Digital data in NH GRANIT represent the efforts of the contributing agencies to record information from the cited source materials. Earth Systems Research Center (ESRC), under contract to the Office of Energy and Planning (OEP), and in consultation with cooperating agencies, maintains a continuing program to identify and correct errors in these data. Neither OEP nor ESRC make any claim as to the validity or reliability or to any implied uses of these data. Data should be used for planning purposes only. Data were derived from various sources and were updated at different timeframes, with varying levels of accuracy. Please notify SRPC of any errors or omissions.



0 0.125 0.25 0.5 Miles



Rochester Sidewalk, Crosswalk, and Curb Ramp Inventory

Curb Ramp Inventory

Page # 10

Legend

- Curb Ramps



SRPC Information
Prepared by Strafford Regional
Planning Commission
150 Wakefield Street #12
Rochester, NH 03867
603-994-3500

Map Author and Date
Author: Jackson Rand
Date: 11/14/2019

Data Disclaimer
Base features from NH GRANIT database. Digital data in NH GRANIT represent the efforts of the contributing agencies to record information from the cited source materials. Earth Systems Research Center (ESRC), under contract to the Office of Energy and Planning (OEP), and in consultation with cooperating agencies, maintains a continuing program to identify and correct errors in these data. Neither OEP nor ESRC make any claim as to the validity or reliability or to any implied uses of these data. Data should be used for planning purposes only. Data were derived from various sources and were updated at different timeframes, with varying levels of accuracy. Please notify SRPC of any errors or omissions.



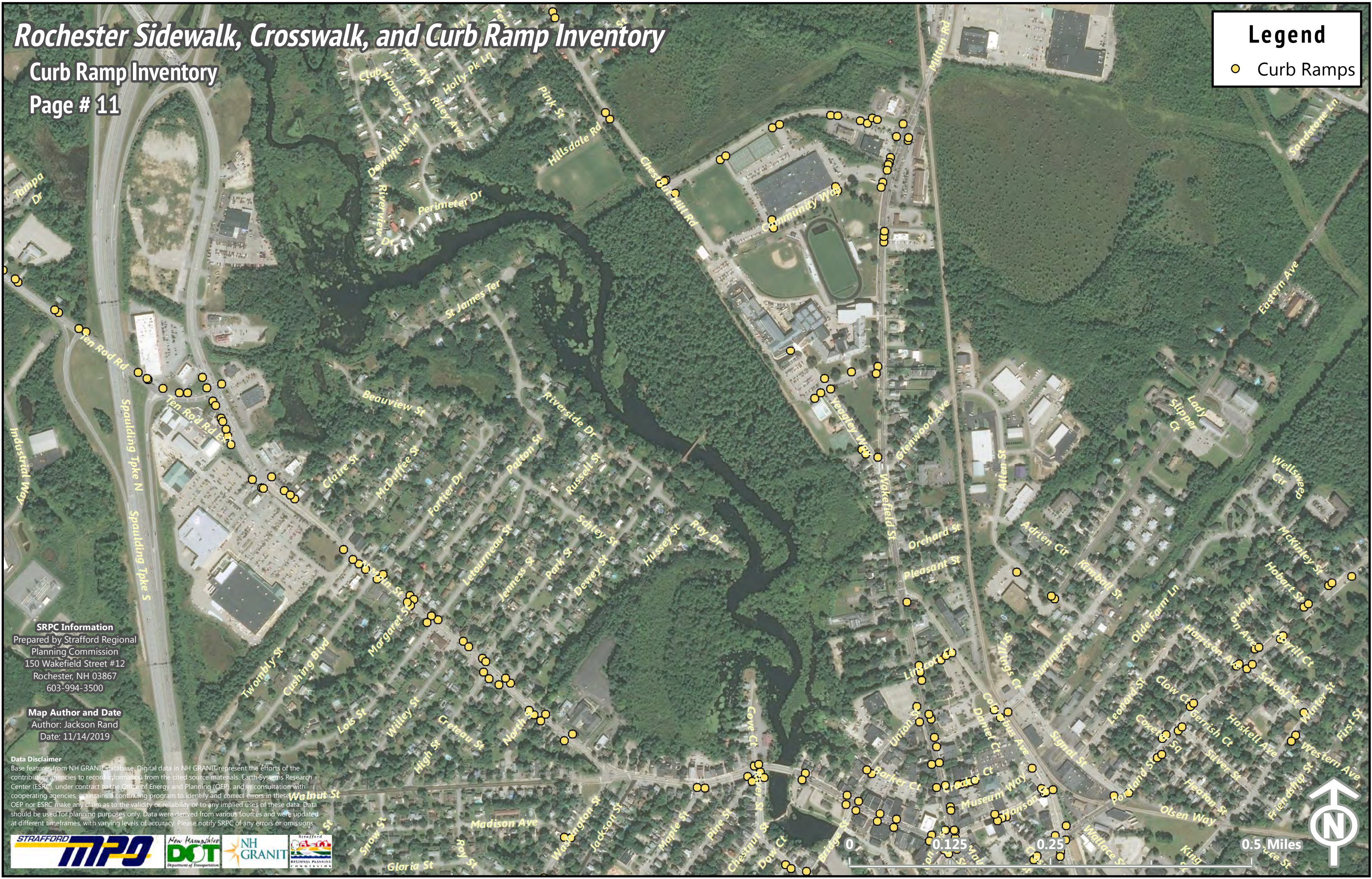
Rochester Sidewalk, Crosswalk, and Curb Ramp Inventory

Curb Ramp Inventory

Page # 11

Legend

- Curb Ramps



SRPC Information
Prepared by Strafford Regional
Planning Commission
150 Wakefield Street #12
Rochester, NH 03867
603-994-3500

Map Author and Date
Author: Jackson Rand
Date: 11/14/2019

Data Disclaimer
Base features from NH GRANIT database. Digital data in NH GRANIT represent the efforts of the contributing agencies to record information from the cited source materials. Earth Systems Research Center (ESRC), under contract to the Office of Energy and Planning (OEP), and in consultation with cooperating agencies, maintains a continuing program to identify and correct errors in these data. OEP nor ESRC make any claim as to the validity or reliability or to any implied uses of these data. Data should be used for planning purposes only. Data were derived from various sources and were updated at different timeframes, with varying levels of accuracy. Please notify SRPC of any errors or omissions.



Rochester Sidewalk, Crosswalk, and Curb Ramp Inventory

Curb Ramp Inventory

Page # 12

Legend
● Curb Ramps



SRPC Information
Prepared by Strafford Regional
Planning Commission
150 Wakefield Street #12
Rochester, NH 03867
603-994-3500

Map Author and Date
Author: Jackson Rand
Date: 11/14/2019

Data Disclaimer
Base features from NH GRANIT database. Digital data in NH GRANIT represent the efforts of the contributing agencies to record information from the cited source materials. Earth Systems Research Center (ESRC), under contract to the Office of Energy and Planning (OEP), and in consultation with cooperating agencies, maintains a continuing program to identify and correct errors in these data. Neither OEP nor ESRC make any claim as to the validity or reliability of any implied uses of these data. Data should be used for planning purposes only. Data were derived from various sources and were updated at different timeframes, with varying levels of accuracy. Please notify SRPC of any errors or omissions.



Rochester Sidewalk, Crosswalk, and Curb Ramp Inventory

Curb Ramp Inventory

Page # 13

Legend

- Curb Ramps



SRPC Information
Prepared by Strafford Regional
Planning Commission
150 Wakefield Street #12
Rochester, NH 03867
603-994-3500

Map Author and Date
Author: Jackson Rand
Date: 11/14/2019

Data Disclaimer
Base features from NH GRANIT database. Digital data in NH GRANIT represent the efforts of the contributing agencies to record information from the cited source materials. Earth Systems Research Center (ESRC), under contract to the Office of Energy and Planning (OEP), and in consultation with cooperating agencies, maintains a continuing program to identify and correct errors in these data. Neither OEP nor ESRC make any claim as to the validity or reliability or to any implied uses of these data. Data should be used for planning purposes only. Data were derived from various sources and were updated at different timeframes, with varying levels of accuracy. Please notify SRPC of any errors or omissions.



Rochester Sidewalk, Crosswalk, and Curb Ramp Inventory

Curb Ramp Inventory

Page # 14

Legend

● Curb Ramps



SRPC Information

Prepared by Strafford Regional
Planning Commission
150 Wakefield Street #12
Rochester, NH 03867
603-994-3500

Map Author and Date

Author: Jackson Rand
Date: 11/14/2019

Data Disclaimer
Base features from NH GRANIT database. Digital data in NH GRANIT represent the efforts of the contributing agencies to record information from the cited source maps. Earth Systems Research Center (ESRC), under contract to the Office of Energy and Planning, maintains a continuing program to identify and correct errors in these data. Neither MPO nor ESRC make any claim as to the validity or reliability of the data. Data should be used for planning purposes only. Data were derived from various sources and were updated at different timeframes, with varying levels of accuracy. Please notify us of any errors or omissions.



0 0.125 0.25 0.5 Miles

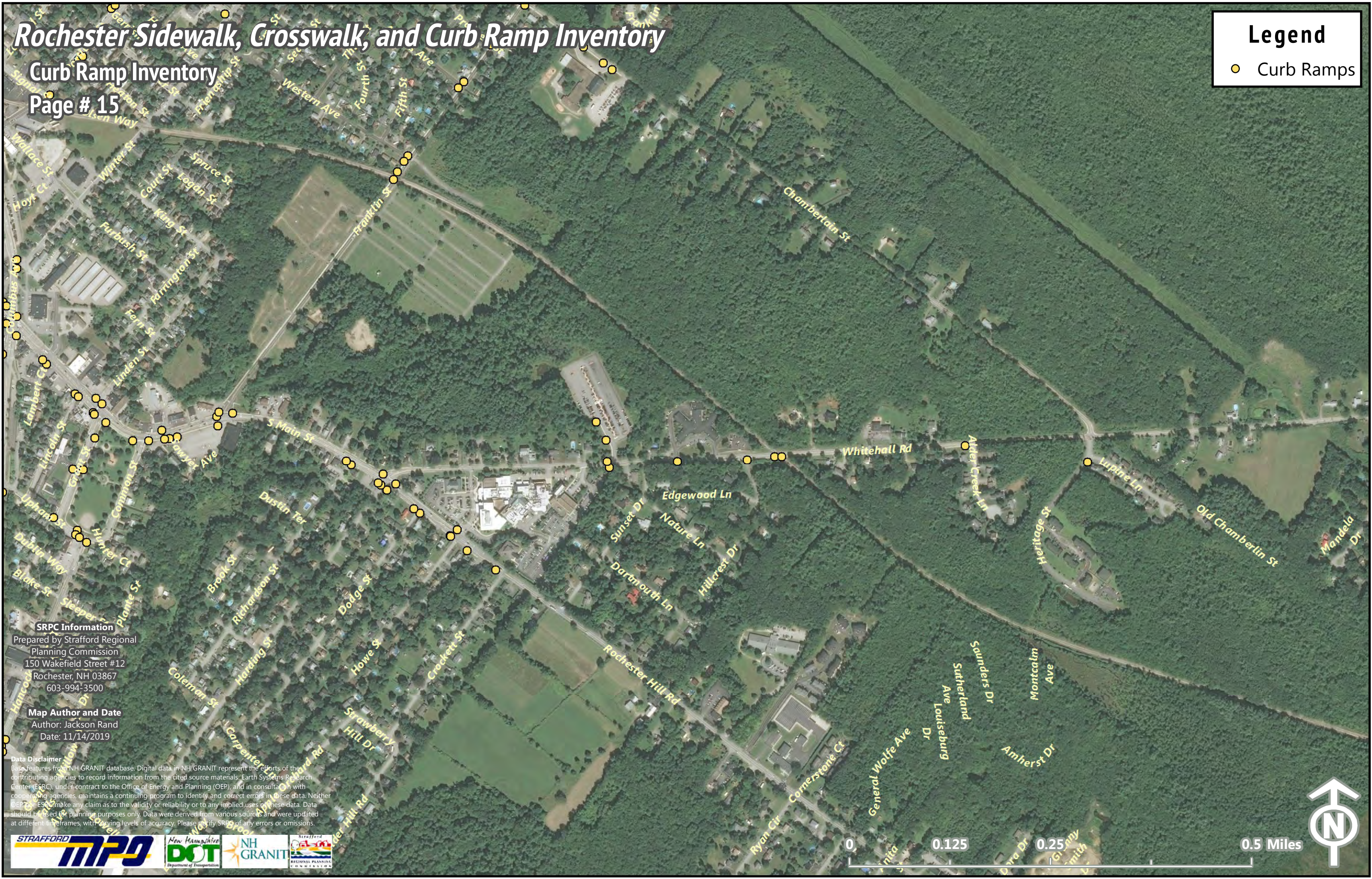


Rochester Sidewalk, Crosswalk, and Curb Ramp Inventory

Curb Ramp Inventory

Page # 15

Legend
● Curb Ramps



SRPC Information
Prepared by Strafford Regional
Planning Commission
150 Wakefield Street #12
Rochester, NH 03867
603-994-3500

Map Author and Date
Author: Jackson Rand
Date: 11/14/2019

Data Disclaimer
Base features from NH GRANIT database. Digital data in NH GRANIT represent the efforts of the contributing agencies to record information from the cited source materials. Earth Systems Research Center (ESRC), under contract to the Office of Energy and Planning (OEP), and in consultation with cooperating agencies, maintains a continuing program to identify and correct errors in these data. Neither OEP nor ESRC make any claim as to the validity or reliability or to any implied uses of these data. Data should be used for planning purposes only. Data were derived from various sources and were updated at different timeframes, with varying levels of accuracy. Please notify SRPC of any errors or omissions.



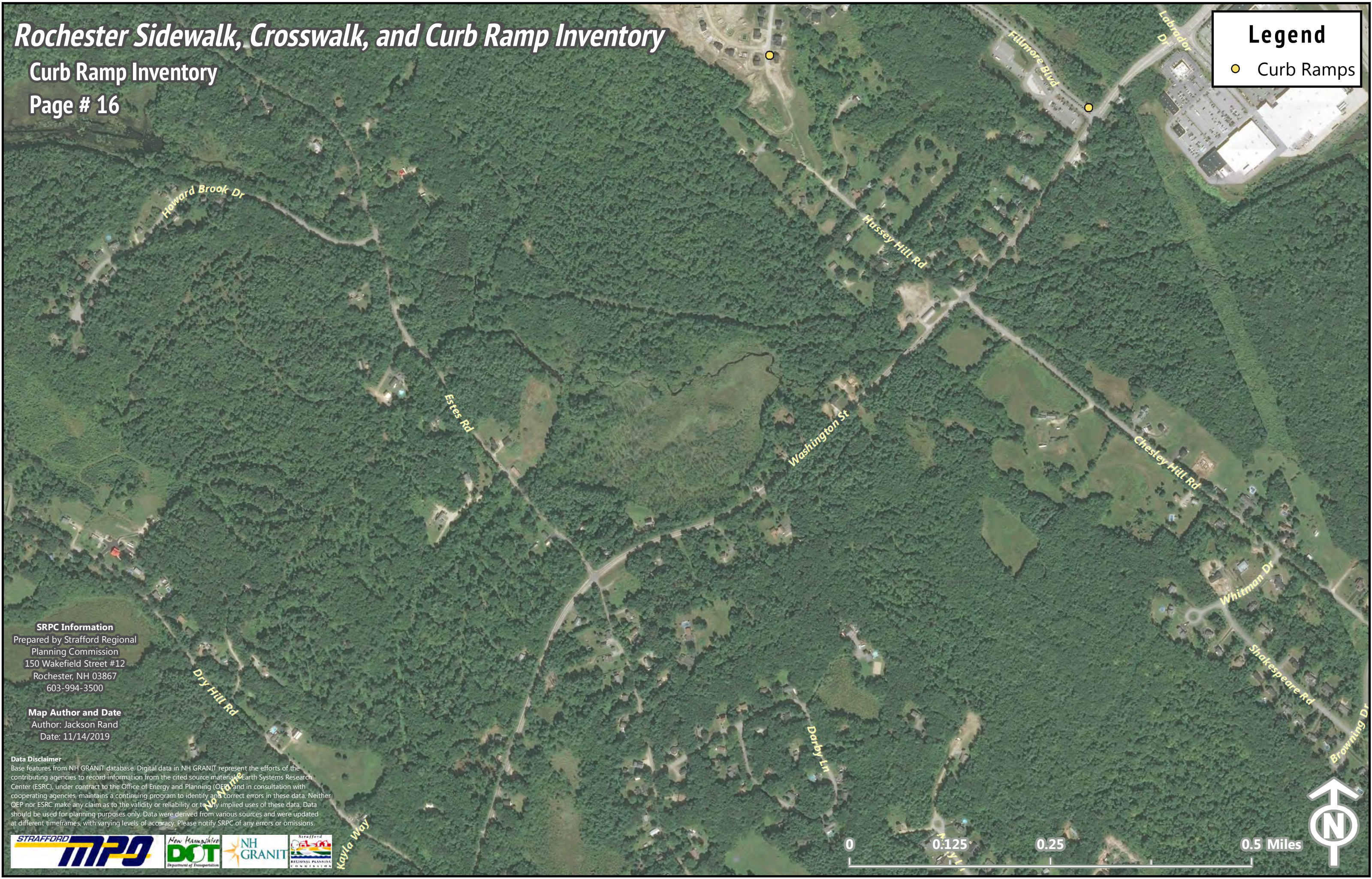
Rochester Sidewalk, Crosswalk, and Curb Ramp Inventory

Curb Ramp Inventory

Page # 16

Legend

- Curb Ramps



SRPC Information
Prepared by Strafford Regional
Planning Commission
150 Wakefield Street #12
Rochester, NH 03867
603-994-3500

Map Author and Date
Author: Jackson Rand
Date: 11/14/2019

Data Disclaimer
Base features from NH GRANIT database. Digital data in NH GRANIT represent the efforts of the contributing agencies to record information from the cited source materials. Earth Systems Research Center (ESRC), under contract to the Office of Energy and Planning (OEP) and in consultation with cooperating agencies, maintains a continuing program to identify and correct errors in these data. Neither OEP nor ESRC make any claim as to the validity or reliability or to any implied uses of these data. Data should be used for planning purposes only. Data were derived from various sources and were updated at different timeframes, with varying levels of accuracy. Please notify SRPC of any errors or omissions.



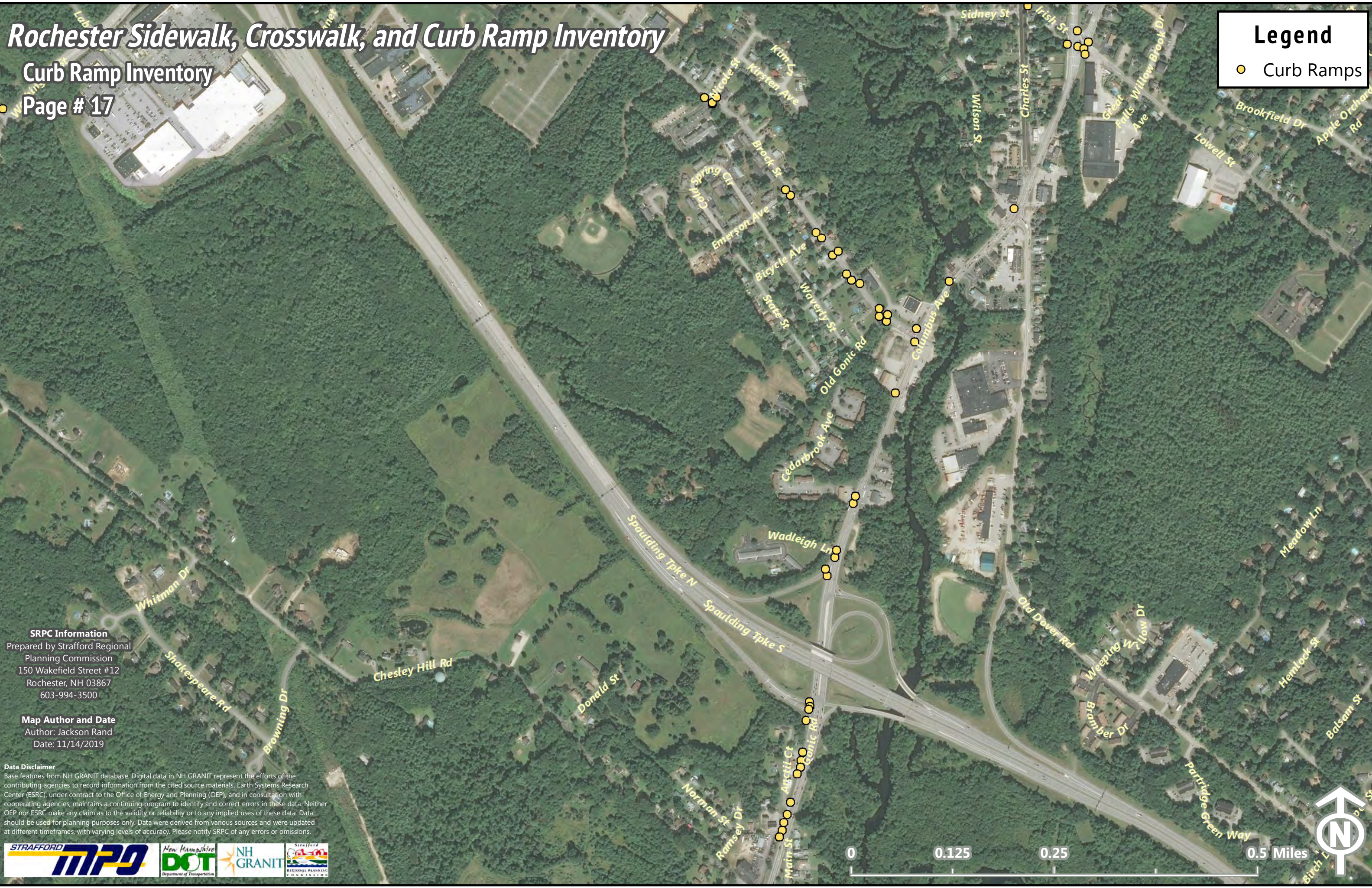
Rochester Sidewalk, Crosswalk, and Curb Ramp Inventory

Curb Ramp Inventory

Page # 17

Legend

- Curb Ramps



SRPC Information
Prepared by Strafford Regional
Planning Commission
150 Wakefield Street #12
Rochester, NH 03867
603-994-3500

Map Author and Date
Author: Jackson Rand
Date: 11/14/2019

Data Disclaimer
Base features from NH GRANIT database. Digital data in NH GRANIT represent the efforts of the contributing agencies to record information from the cited source materials. Earth Systems Research Center (ESRC), under contract to the Office of Energy and Planning (OEP), and in consultation with cooperating agencies, maintains a continuing program to identify and correct errors in these data. Neither OEP nor ESRC make any claim as to the validity or reliability or to any implied uses of these data. Data should be used for planning purposes only. Data were derived from various sources and were updated at different timeframes, with varying levels of accuracy. Please notify SRPC of any errors or omissions.

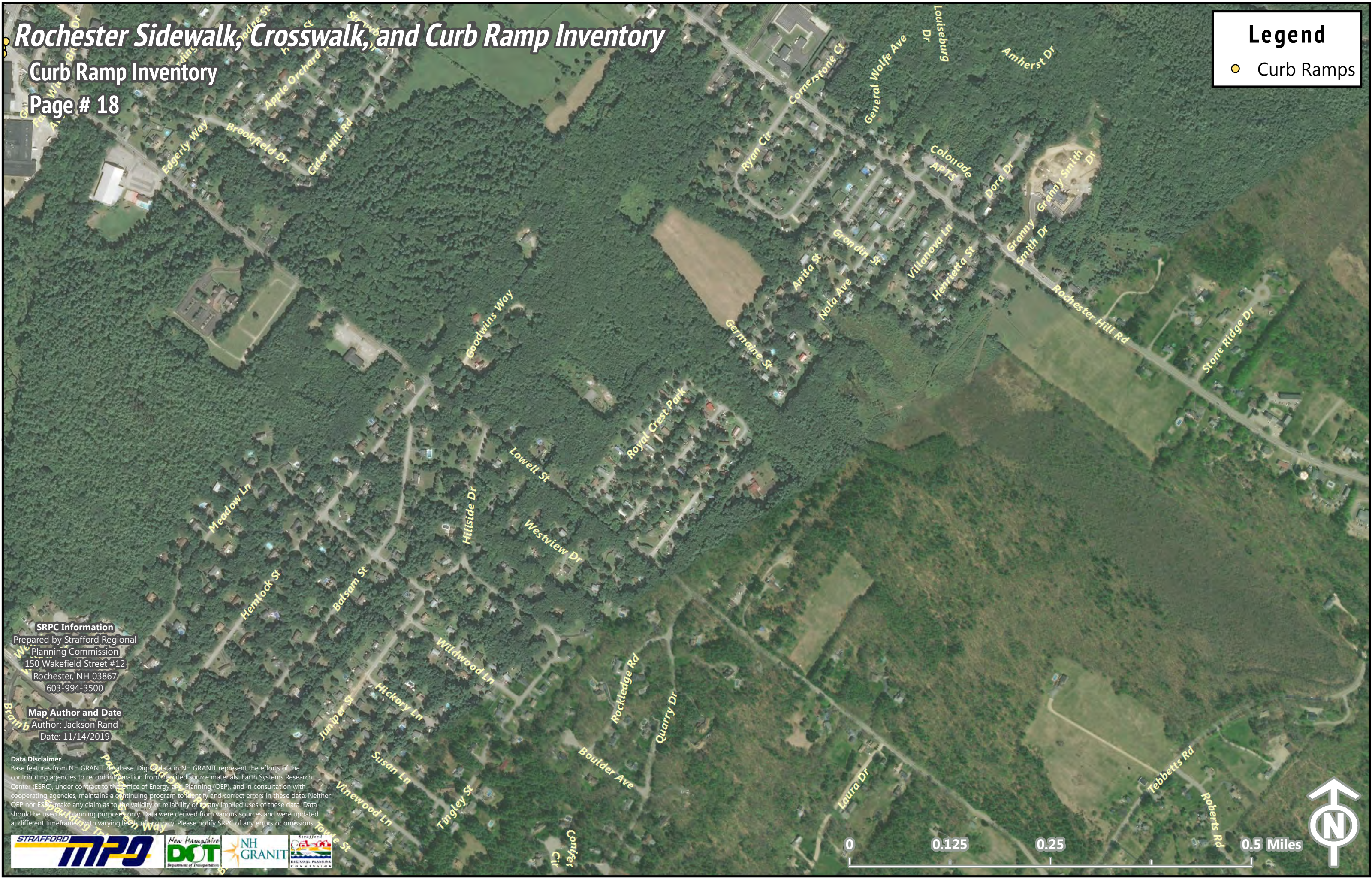


Rochester Sidewalk, Crosswalk, and Curb Ramp Inventory

Curb Ramp Inventory

Page # 18

Legend
● Curb Ramps



SRPC Information
Prepared by Strafford Regional
Planning Commission
150 Wakefield Street #12
Rochester, NH 03867
603-994-3500

Map Author and Date
Author: Jackson Rand
Date: 11/14/2019

Data Disclaimer
Base features from NH GRANIT database. Digital data in NH GRANIT represent the efforts of the contributing agencies to record information from the cited source materials. Earth Systems Research Center (ESRC), under contract to the Office of Energy and Planning (OEP), and in consultation with cooperating agencies, maintains a continuing program to identify and correct errors in these data. Neither OEP nor ESRC make any claim as to the validity or reliability of, or any implied uses of these data. Data should be used for planning purposes only. Data were derived from various sources and were updated at different timeframes with varying levels of accuracy. Please notify SRPC of any errors or omissions.



Rochester Sidewalk, Crosswalk, and Curb Ramp Inventory

Curb Ramp Inventory

Page # 19

Legend

- Curb Ramps



SRPC Information

Prepared by Strafford Regional
Planning Commission
150 Wakefield Street #12
Rochester, NH 03867
603-994-3500

Map Author and Date

Author: Jackson Rand
Date: 11/14/2019

Data Disclaimer

Base features from NH GRANIT database. Digital data in NH GRANIT represent the efforts of the contributing agencies to record information from the cited source materials. Earth Systems Research Center (ESRC), under contract to the Office of Energy and Planning (OEP), and in consultation with cooperating agencies, maintains a continuing program to identify and correct errors in these data. Neither OEP nor ESRC make any claim as to the validity or reliability or to any implied uses of these data. Data should be used for planning purposes only. Data were derived from various sources and were updated at different timeframes, with varying levels of accuracy. Please notify SRPC of any errors or omissions.



0 0.125 0.25 0.5 Miles



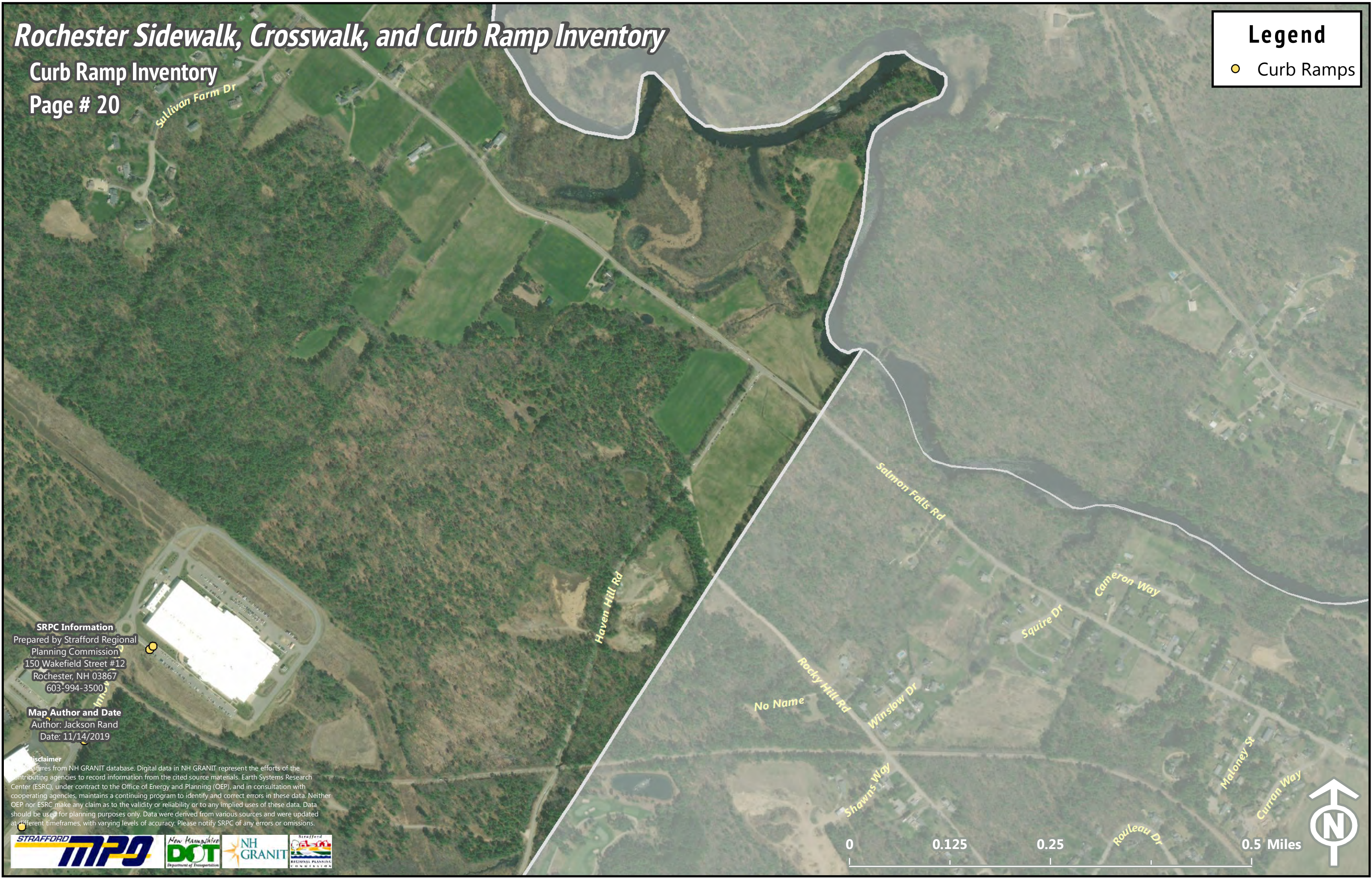
Rochester Sidewalk, Crosswalk, and Curb Ramp Inventory

Curb Ramp Inventory

Page # 20

Legend

- Curb Ramps



SRPC Information
Prepared by Strafford Regional
Planning Commission
150 Wakefield Street #12
Rochester, NH 03867
603-994-3500

Map Author and Date
Author: Jackson Rand
Date: 11/14/2019

Disclaimer
Data is derived from NH GRANIT database. Digital data in NH GRANIT represent the efforts of the contributing agencies to record information from the cited source materials. Earth Systems Research Center (ESRC), under contract to the Office of Energy and Planning (OEP), and in consultation with cooperating agencies, maintains a continuing program to identify and correct errors in these data. Neither OEP nor ESRC make any claim as to the validity or reliability or to any implied uses of these data. Data should be used for planning purposes only. Data were derived from various sources and were updated at different timeframes, with varying levels of accuracy. Please notify SRPC of any errors or omissions.

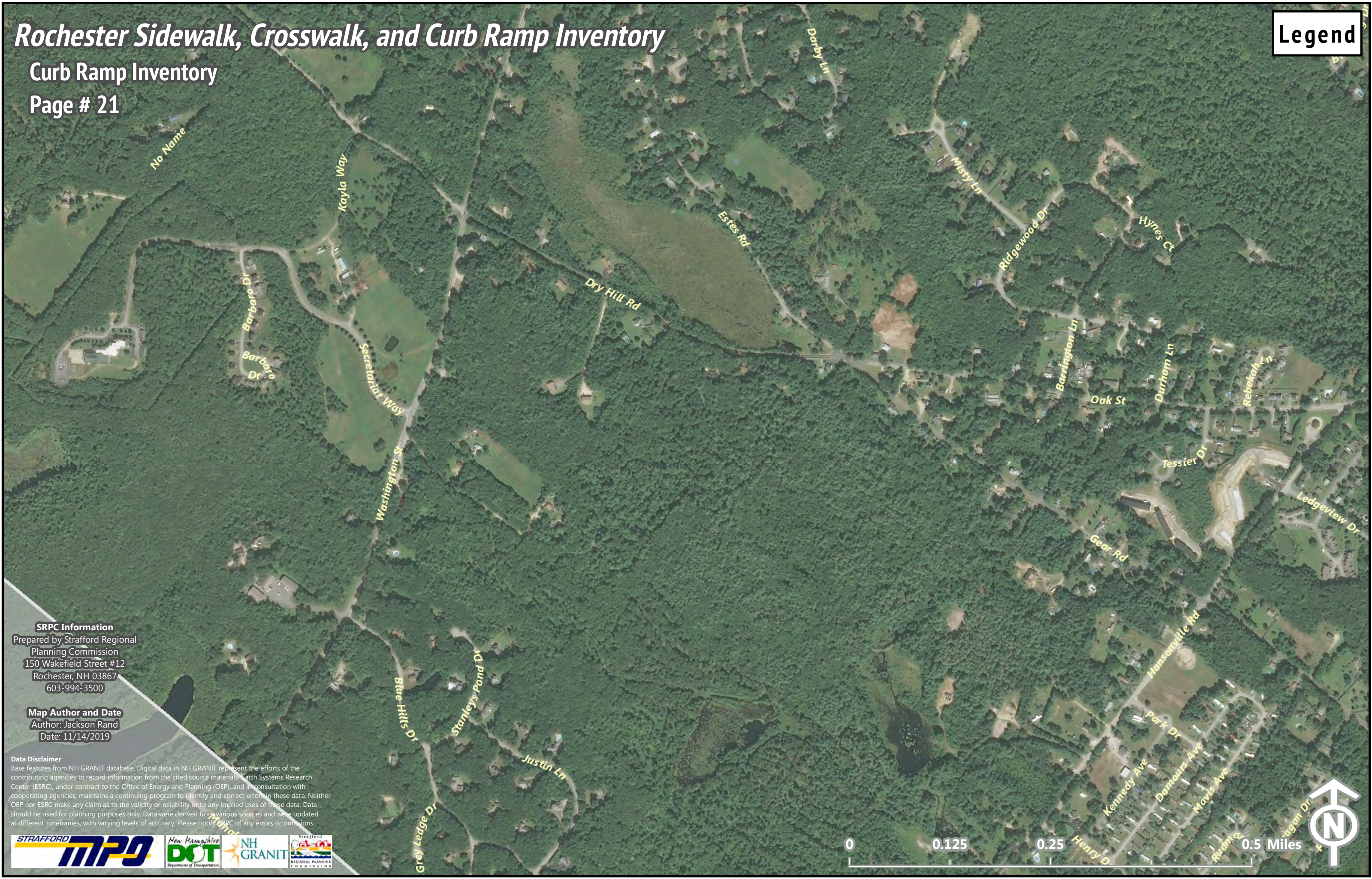


Rochester Sidewalk, Crosswalk, and Curb Ramp Inventory

Curb Ramp Inventory

Page # 21

Legend



SRPC Information
Prepared by Strafford Regional
Planning Commission
150 Wakefield Street #12
Rochester, NH 03867
603-994-3500

Map Author and Date
Author: Jackson Rand
Date: 11/14/2019

Data Disclaimer
Base features from NH GRANIT database. Digital data in NH GRANIT represent the efforts of the contributing agencies to record information from the cited source materials. Earth Systems Research Center (ESRC), under contract to the Office of Energy and Planning (OEP), and in consultation with cooperating agencies, maintains a continuing program to identify and correct errors in these data. Neither OEP nor ESRC make any claim as to the validity or reliability or to any implied uses of these data. Data should be used for planning purposes only. Data were derived from various sources and were updated at different timeframes, with varying levels of accuracy. Please notify SRPC of any errors or omissions.



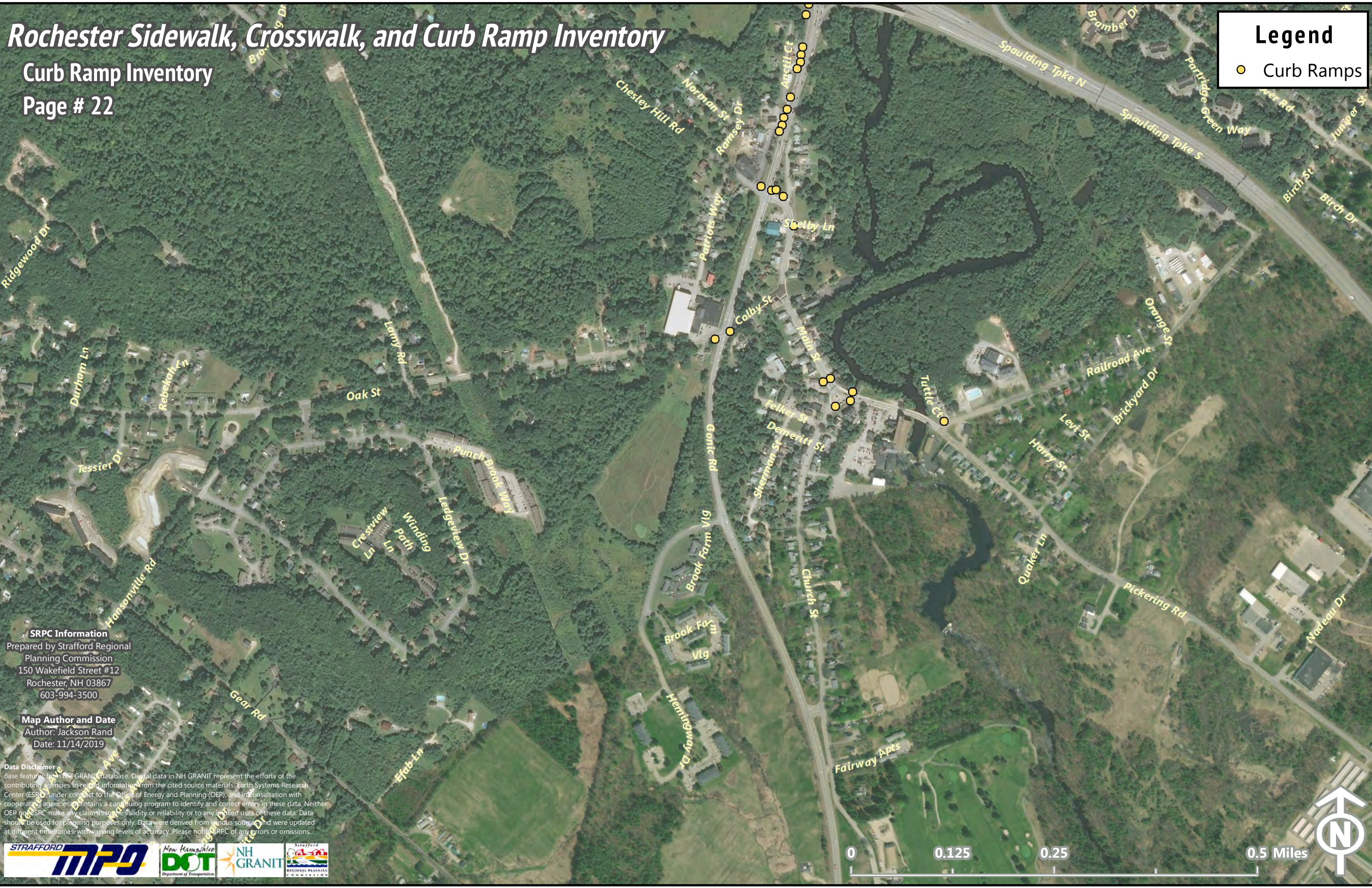
Rochester Sidewalk, Crosswalk, and Curb Ramp Inventory

Curb Ramp Inventory

Page # 22

Legend

● Curb Ramps



SRPC Information
Prepared by Strafford Regional
Planning Commission
150 Wakefield Street #12
Rochester, NH 03867
603-994-3500

Map Author and Date
Author: Jackson Rand
Date: 11/14/2019

Data Disclaimer
Base features from NH GRANIT database. Digital data in NH GRANIT represent the efforts of the contributing agencies to record information from the cited source materials. Earth Systems Research Center (ESRC), under contract to the Office of Energy and Planning (OEP), and in consultation with cooperating agencies, maintains a continuing program to identify and correct errors in these data. Neither OEP nor ESRC make any claims to the validity or reliability or to any implied uses of these data. Data should be used for planning purposes only. Data were derived from various sources and were updated at different timeframes with varying levels of accuracy. Please notify SRPC of any errors or omissions.

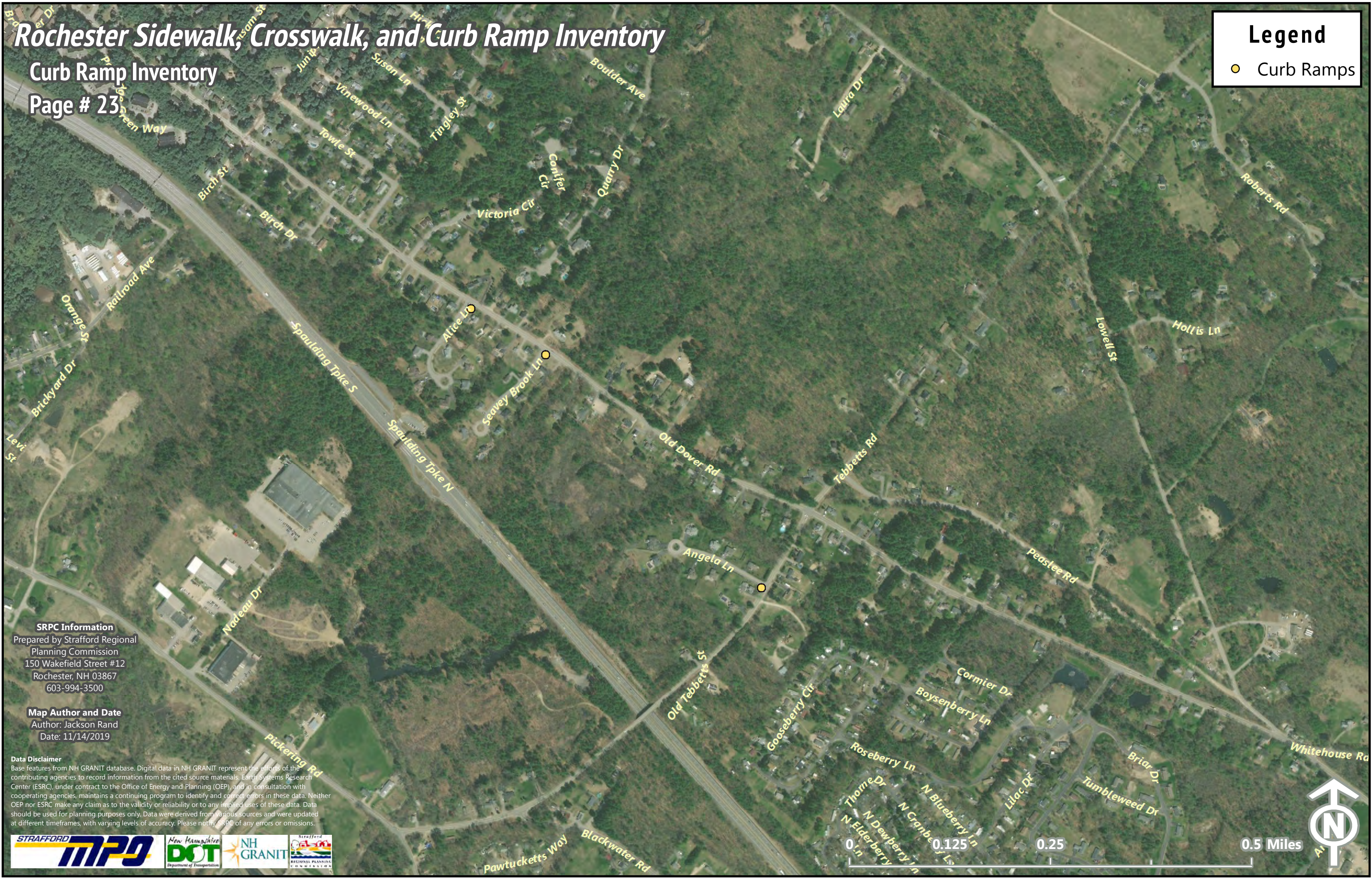


Rochester Sidewalk, Crosswalk, and Curb Ramp Inventory

Curb Ramp Inventory

Page # 23

Legend
● Curb Ramps



SRPC Information
Prepared by Strafford Regional
Planning Commission
150 Wakefield Street #12
Rochester, NH 03867
603-994-3500

Map Author and Date
Author: Jackson Rand
Date: 11/14/2019

Data Disclaimer
Base features from NH GRANIT database. Digital data in NH GRANIT represent the efforts of the contributing agencies to record information from the cited source materials. Earth Systems Research Center (ESRC), under contract to the Office of Energy and Planning (OEP), and in consultation with cooperating agencies, maintains a continuing program to identify and correct errors in these data. Neither OEP nor ESRC make any claim as to the validity or reliability or to any implied uses of these data. Data should be used for planning purposes only. Data were derived from various sources and were updated at different timeframes, with varying levels of accuracy. Please notify SRPC of any errors or omissions.



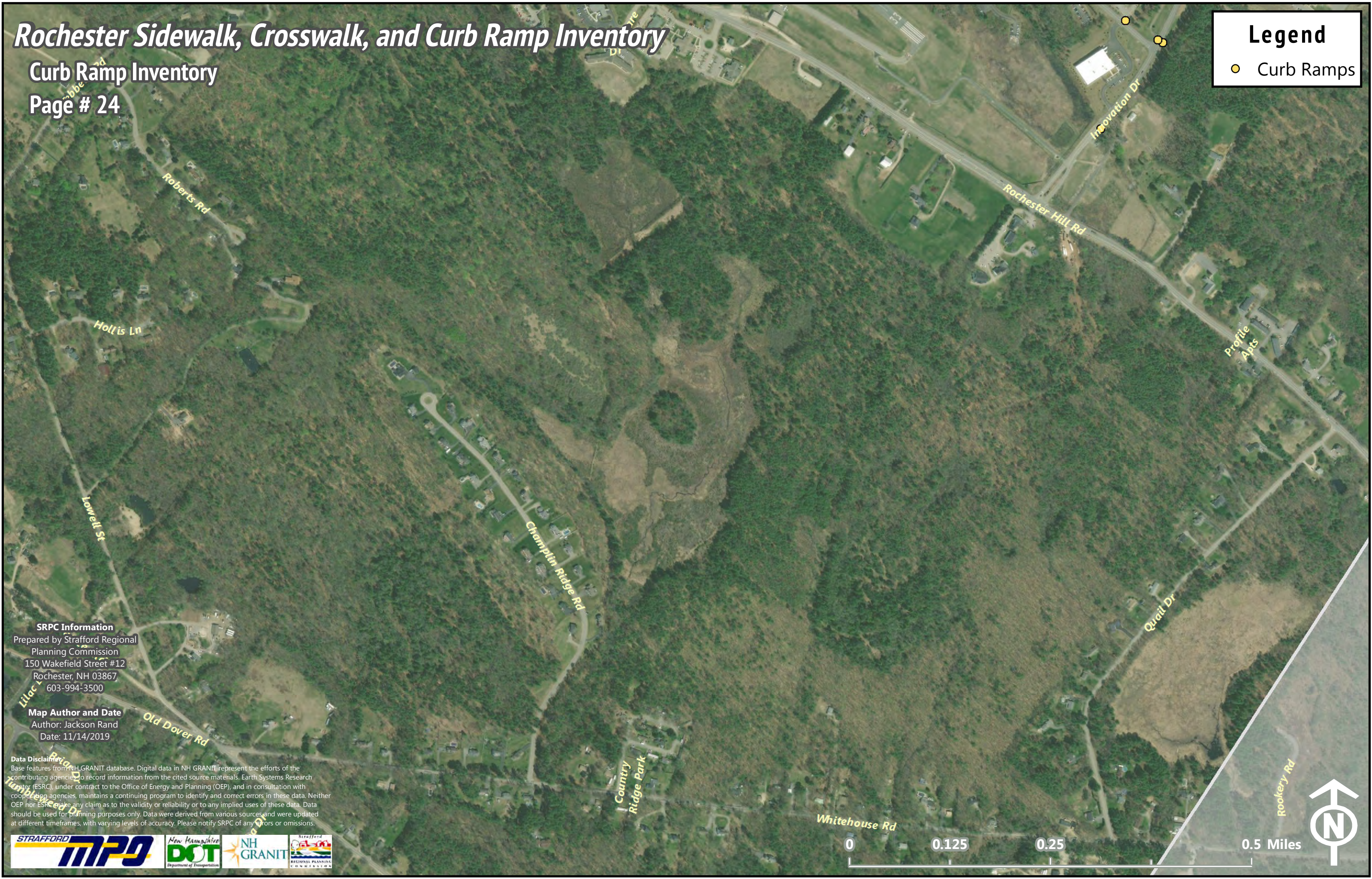
Rochester Sidewalk, Crosswalk, and Curb Ramp Inventory

Curb Ramp Inventory

Page # 24

Legend

- Curb Ramps



SRPC Information
Prepared by Strafford Regional
Planning Commission
150 Wakefield Street #12
Rochester, NH 03867
603-994-3500

Map Author and Date
Author: Jackson Rand
Date: 11/14/2019

Data Disclaimer
Base features from NH GRANIT database. Digital data in NH GRANIT represent the efforts of the contributing agencies to record information from the cited source materials. Earth Systems Research Center (ESRC), under contract to the Office of Energy and Planning (OEP), and in consultation with cooperating agencies, maintains a continuing program to identify and correct errors in these data. Neither OEP nor ESRC make any claim as to the validity or reliability or to any implied uses of these data. Data should be used for planning purposes only. Data were derived from various sources and were updated at different timeframes, with varying levels of accuracy. Please notify SRPC of any errors or omissions.



0.5 Miles

