

# Rochester Sidewalk, Crosswalk, and Curb Ramp Inventory

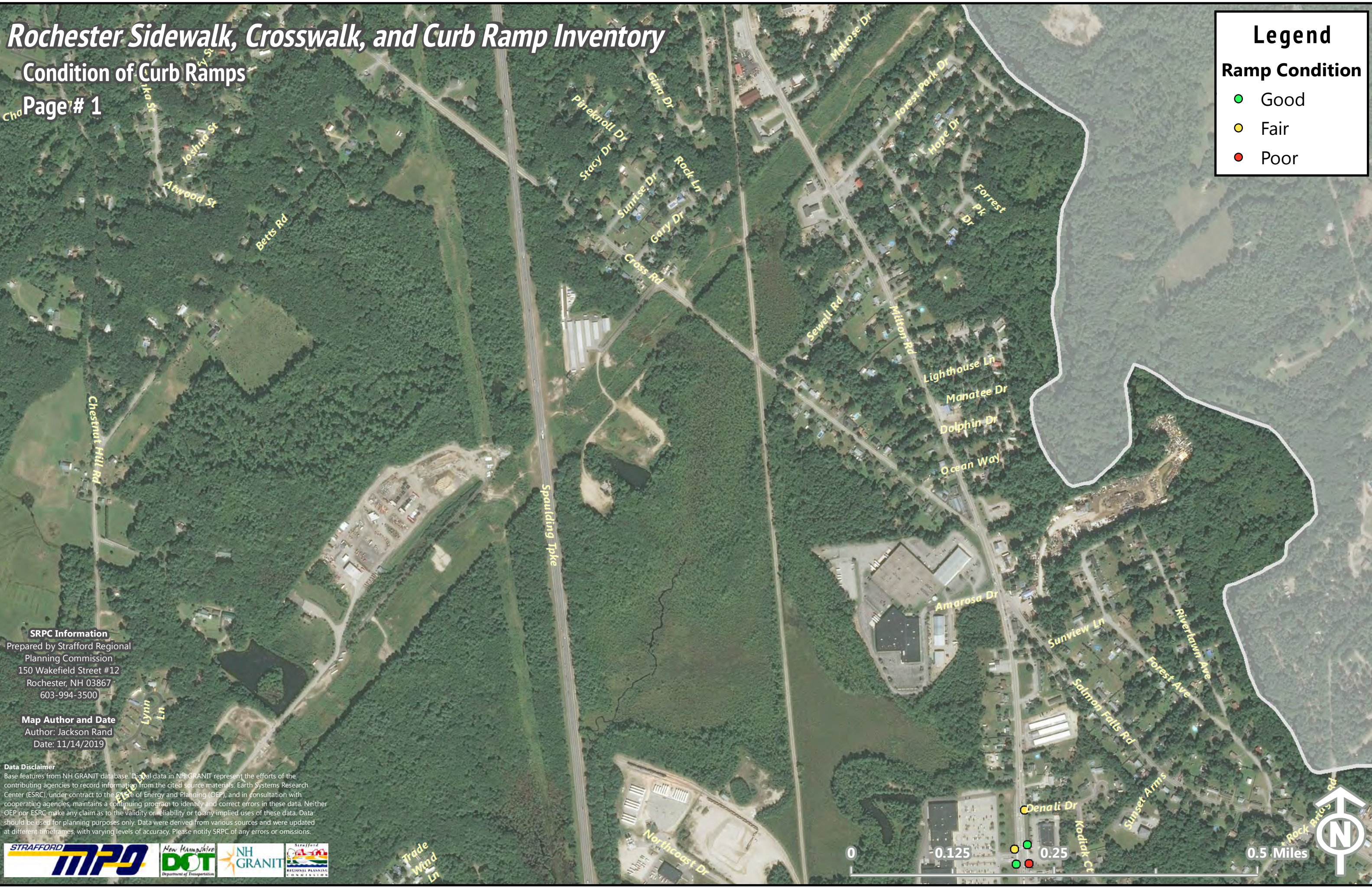
## Condition of Curb Ramps

Page # 1

### Legend

**Ramp Condition**

- Good
- Fair
- Poor



**SRPC Information**  
Prepared by Strafford Regional  
Planning Commission  
150 Wakefield Street #12  
Rochester, NH 03867  
603-994-3500

**Map Author and Date**  
Author: Jackson Rand  
Date: 11/14/2019

**Data Disclaimer**  
Base features from NH GRANIT database. Digital data in NH GRANIT represent the efforts of the contributing agencies to record information from the cited source materials. Earth Systems Research Center (ESRC), under contract to the Office of Energy and Planning (OEP), and in consultation with cooperating agencies, maintains a continuing program to identify and correct errors in these data. Neither OEP nor ESRC make any claim as to the validity or reliability or to any implied uses of these data. Data should be used for planning purposes only. Data were derived from various sources and were updated at different timeframes, with varying levels of accuracy. Please notify SRPC of any errors or omissions.



0 0.125 0.25 0.5 Miles

# Rochester Sidewalk, Crosswalk, and Curb Ramp Inventory

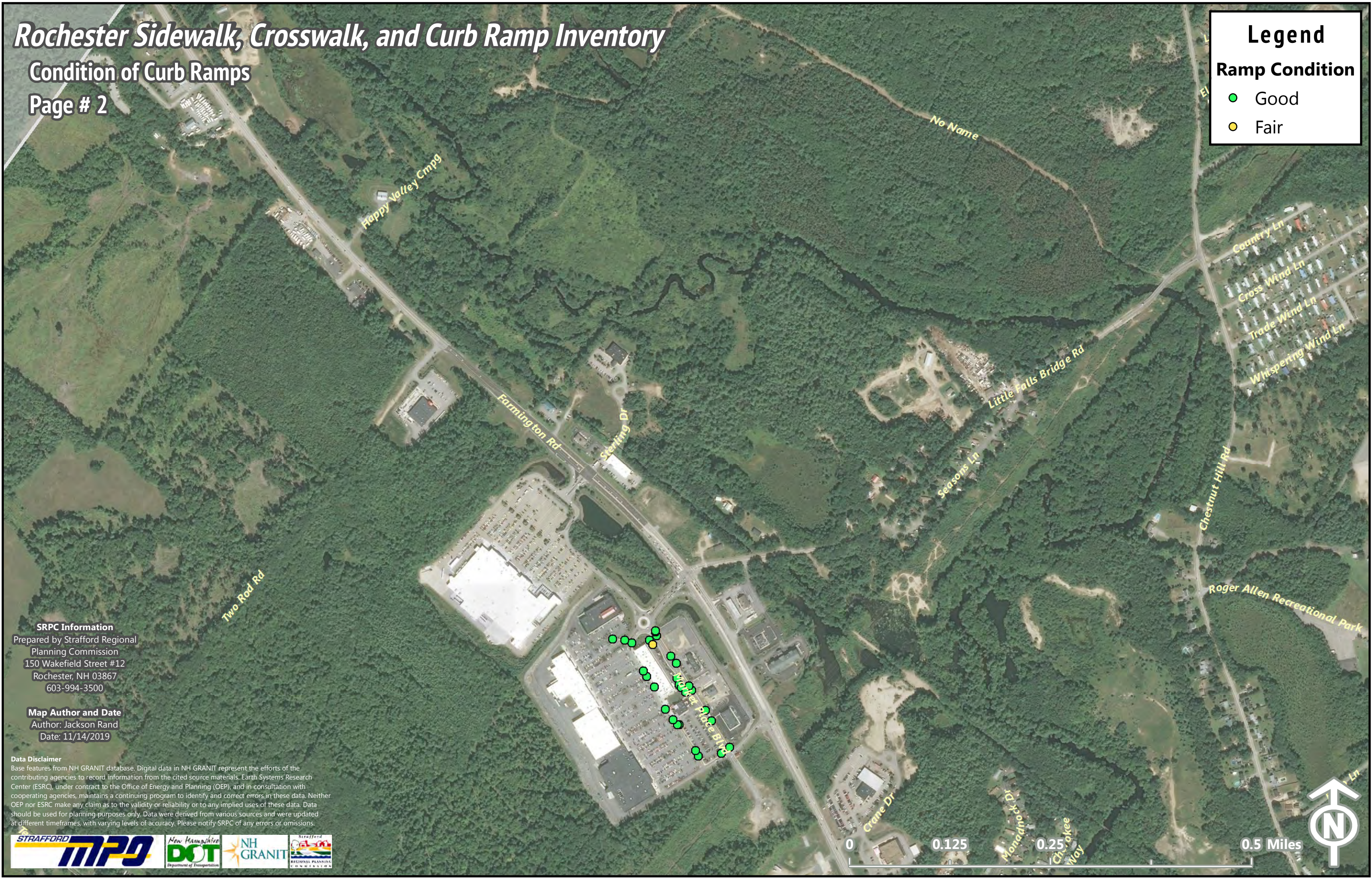
## Condition of Curb Ramps

Page # 2

### Legend

**Ramp Condition**

- Good
- Fair



**SRPC Information**  
Prepared by Strafford Regional  
Planning Commission  
150 Wakefield Street #12  
Rochester, NH 03867  
603-994-3500

**Map Author and Date**  
Author: Jackson Rand  
Date: 11/14/2019

**Data Disclaimer**  
Base features from NH GRANIT database. Digital data in NH GRANIT represent the efforts of the contributing agencies to record information from the cited source materials. Earth Systems Research Center (ESRC), under contract to the Office of Energy and Planning (OEP), and in consultation with cooperating agencies, maintains a continuing program to identify and correct errors in these data. Neither OEP nor ESRC make any claim as to the validity or reliability or to any implied uses of these data. Data should be used for planning purposes only. Data were derived from various sources and were updated at different timeframes, with varying levels of accuracy. Please notify SRPC of any errors or omissions.



# Rochester Sidewalk, Crosswalk, and Curb Ramp Inventory

## Condition of Curb Ramps

Page # 3

### Legend

**Ramp Condition**

- Good
- Fair
- Poor



**SRPC Information**  
Prepared by Strafford Regional  
Planning Commission  
150 Wakefield Street #12  
Rochester, NH 03867  
603-994-3500

**Map Author and Date**  
Author: Jackson Rand  
Date: 11/14/2019

**Data Disclaimer**  
Base features from NH GRANIT database. Digital data in NH GRANIT represent the efforts of the contributing agencies to record information from the cited source materials. Earth Systems Research Center (ESRC), under contract to the Office of Energy and Planning (OEP), and in consultation with cooperating agencies, maintains a continuing program to identify and correct errors in these data. Neither OEP nor ESRC make any claim as to the validity or reliability or to any implied uses of these data. Data should be used for planning purposes only. Data were derived from various sources and were updated at different timeframes, with varying levels of accuracy. Please notify SRPC of any errors or omissions.



# Rochester Sidewalk, Crosswalk, and Curb Ramp Inventory

## Condition of Curb Ramps

### Page # 4

### Legend

**Ramp Condition**

- Good
- Fair



**SRPC Information**  
Prepared by Strafford Regional  
Planning Commission  
150 Wakefield Street #12  
Rochester, NH 03867  
603-994-3500

**Map Author and Date**  
Author: Jackson Rand  
Date: 11/14/2019

**Data Disclaimer**  
Base features from NH GRANIT database. Digital data in NH GRANIT represent the efforts of the contributing agencies to record information from the cited source materials. Earth Systems Research Center (ESRC), under contract to the Office of Energy and Planning (OEP), and in consultation with cooperating agencies, maintains a continuing program to identify and correct errors in these data. Neither OEP nor ESRC make any claim as to the validity or reliability or to any implied uses of these data. Data should be used for planning purposes only. Data were derived from various sources and were updated at different timeframes, with varying levels of accuracy. Please notify SRPC of any errors or omissions.



# Rochester Sidewalk, Crosswalk, and Curb Ramp Inventory

## Condition of Curb Ramps

Page # 5

**Legend**

**Ramp Condition**

- Good
- Fair



**SRPC Information**  
Prepared by Strafford Regional  
Planning Commission  
150 Wakefield Street #12  
Rochester, NH 03867  
603-994-3500

**Map Author and Date**  
Author: Jackson Rand  
Date: 11/14/2019

**Data Disclaimer**  
Base features from NH GRANIT database. Digital data in NH GRANIT represent the efforts of the contributing agencies to record information from the cited source materials. Earth Systems Research Center (ESRC), under contract to the Office of Energy and Planning (OEP), and in consultation with cooperating agencies, maintains a continuing program to identify and correct errors in these data. Neither OEP nor ESRC make any claim as to the validity or reliability or to any implied uses of these data. Data should be used for planning purposes only. Data were derived from various sources and were updated at different timeframes, with varying levels of accuracy. Please notify SRPC of any errors or omissions.



# Rochester Sidewalk, Crosswalk, and Curb Ramp Inventory

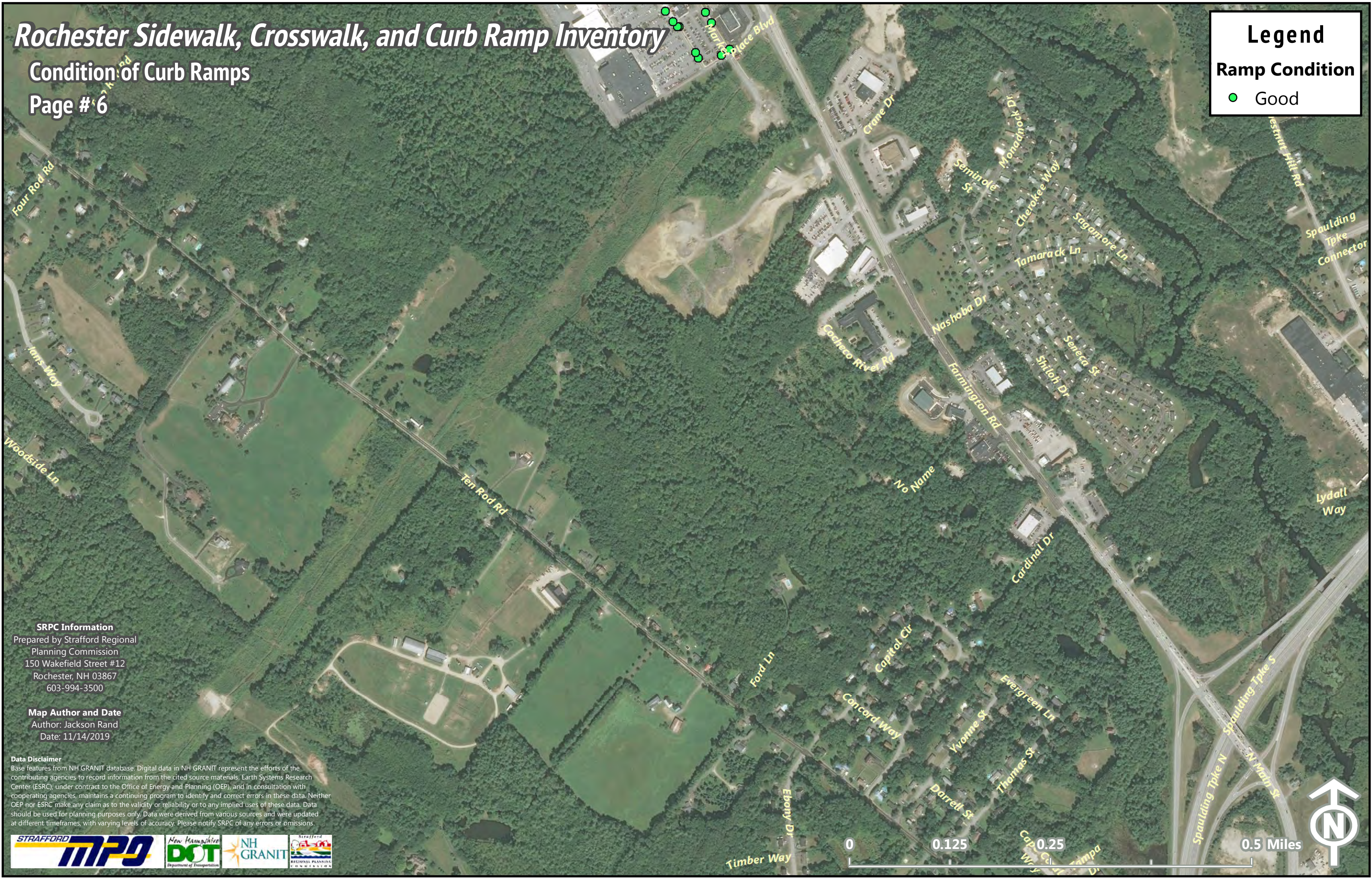
Condition of Curb Ramps

Page # 6

**Legend**

**Ramp Condition**

- Good



**SRPC Information**  
Prepared by Strafford Regional  
Planning Commission  
150 Wakefield Street #12  
Rochester, NH 03867  
603-994-3500

**Map Author and Date**  
Author: Jackson Rand  
Date: 11/14/2019

**Data Disclaimer**  
Base features from NH GRANIT database. Digital data in NH GRANIT represent the efforts of the contributing agencies to record information from the cited source materials. Earth Systems Research Center (ESRC), under contract to the Office of Energy and Planning (OEP), and in consultation with cooperating agencies, maintains a continuing program to identify and correct errors in these data. Neither OEP nor ESRC make any claim as to the validity or reliability or to any implied uses of these data. Data should be used for planning purposes only. Data were derived from various sources and were updated at different timeframes, with varying levels of accuracy. Please notify SRPC of any errors or omissions.



# Rochester Sidewalk, Crosswalk, and Curb Ramp Inventory

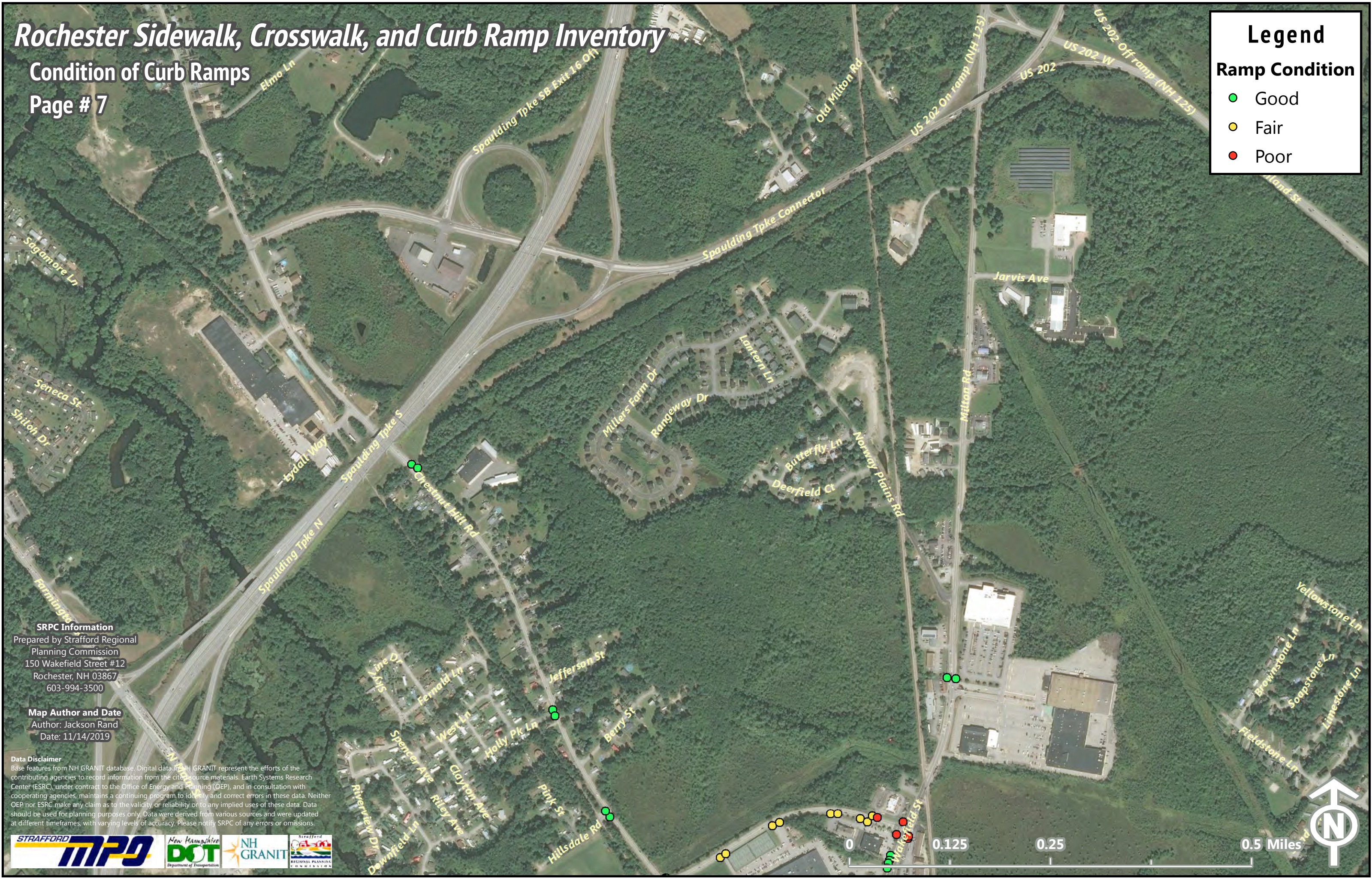
## Condition of Curb Ramps

Page # 7

### Legend

**Ramp Condition**

- Good
- Fair
- Poor



**SRPC Information**  
Prepared by Strafford Regional  
Planning Commission  
150 Wakefield Street #12  
Rochester, NH 03867  
603-994-3500

**Map Author and Date**  
Author: Jackson Rand  
Date: 11/14/2019

**Data Disclaimer**  
Base features from NH GRANIT database. Digital data in NH GRANIT represent the efforts of the contributing agencies to record information from the city source materials. Earth Systems Research Center (ESRC), under contract to the Office of Energy and Planning (OEP), and in consultation with cooperating agencies, maintains a continuing program to identify and correct errors in these data. Neither OEP nor ESRC make any claim as to the validity or reliability or to any implied uses of these data. Data should be used for planning purposes only. Data were derived from various sources and were updated at different timeframes, with varying levels of accuracy. Please notify SRPC of any errors or omissions.



# Rochester Sidewalk, Crosswalk, and Curb Ramp Inventory

Condition of Curb Ramps

Page # 8

### Legend

**Ramp Condition**

- Good
- Fair



**SRPC Information**  
Prepared by Strafford Regional  
Planning Commission  
150 Wakefield Street #12  
Rochester, NH 03867  
603-994-3500

**Map Author and Date**  
Author: Jackson Rand  
Date: 11/14/2019

**Data Disclaimer**  
Base features from NH GRANIT database. Digital data in NH GRANIT represent the efforts of the contributing agencies to record information from the cited source materials. Earth Systems Research Center (ESRC), under contract to the Office of Energy and Planning (OEP), and in consultation with cooperating agencies, maintains a continuing program to identify and correct errors in this data. Neither OEP nor ESRC make any claim as to the validity or reliability or to any implied uses of these data. Data should be used for planning purposes only. Data were derived from various sources and were updated at different timeframes, with varying levels of accuracy. Please notify SRPC of any errors or omissions.





# Rochester Sidewalk, Crosswalk, and Curb Ramp Inventory

Condition of Curb Ramps

Page # 9

**Legend**

**Ramp Condition**

- Good



**SRPC Information**  
Prepared by Strafford Regional  
Planning Commission  
150 Wakefield Street #12  
Rochester, NH 03867  
603-994-3500

**Map Author and Date**  
Author: Jackson Rand  
Date: 11/14/2019

**Data Disclaimer**  
Base features from NH GRANIT database. Digital data in NH GRANIT represent the efforts of the contributing agencies to record information from the cited source materials. Earth Systems Research Center (ESRC), under contract to the Office of Energy and Planning (OEP), and in consultation with cooperating agencies, maintains a continuing program to identify and correct errors in these data. Neither OEP nor ESRC make any claim as to the validity or reliability or to any implied uses of these data. Data should be used for planning purposes only. Data were derived from various sources and were updated at different timeframes, with varying levels of accuracy. Please notify SRPC of any errors or omissions.



# Rochester Sidewalk, Crosswalk, and Curb Ramp Inventory

## Condition of Curb Ramps

Page # 10

### Legend

**Ramp Condition**

- Good
- Fair
- Poor



**SRPC Information**  
Prepared by Strafford Regional  
Planning Commission  
150 Wakefield Street #12  
Rochester, NH 03867  
603-994-3500

**Map Author and Date**  
Author: Jackson Rand  
Date: 11/14/2019

**Data Disclaimer**  
Base features from NH GRANIT database. Digital data in NH GRANIT represent the efforts of the contributing agencies to record information from the cited source materials. Earth Systems Research Center (ESRC), under contract to the Office of Energy and Planning (OEP), and in consultation with cooperating agencies, maintains a continuing program to identify and correct errors in these data. Neither OEP nor ESRC make any claim as to the validity or reliability or to any implied uses of these data. Data should be used for planning purposes only. Data were derived from various sources and were updated at different timeframes, with varying levels of accuracy. Please notify SRPC of any errors or omissions.



# Rochester Sidewalk, Crosswalk, and Curb Ramp Inventory

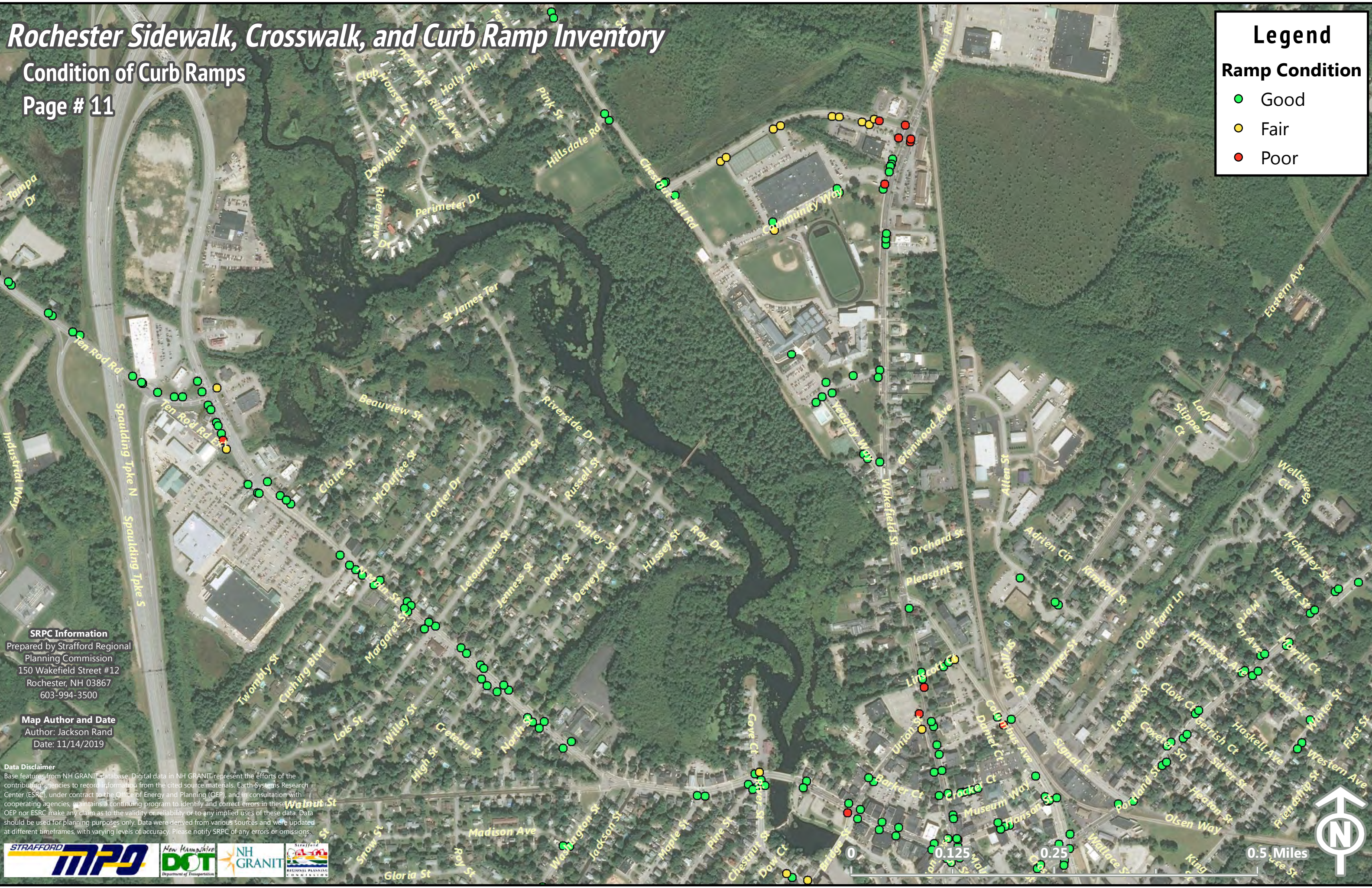
## Condition of Curb Ramps

Page # 11

### Legend

**Ramp Condition**

- Good
- Fair
- Poor



**SRPC Information**  
Prepared by Strafford Regional  
Planning Commission  
150 Wakefield Street #12  
Rochester, NH 03867  
603-994-3500

**Map Author and Date**  
Author: Jackson Rand  
Date: 11/14/2019

**Data Disclaimer**  
Base features from NH GRANIT database. Digital data in NH GRANIT represent the efforts of the contributing agencies to record information from the cited source materials. Earth Systems Research Center (ESRC), under contract to the Office of Energy and Planning (OEP), and in consultation with cooperating agencies, maintains a continuing program to identify and correct errors in these data. OEP nor ESRC make any claim as to the validity or reliability or to any implied uses of these data. Data should be used for planning purposes only. Data were derived from various sources and were updated at different timeframes, with varying levels of accuracy. Please notify SRPC of any errors or omissions.



# Rochester Sidewalk, Crosswalk, and Curb Ramp Inventory

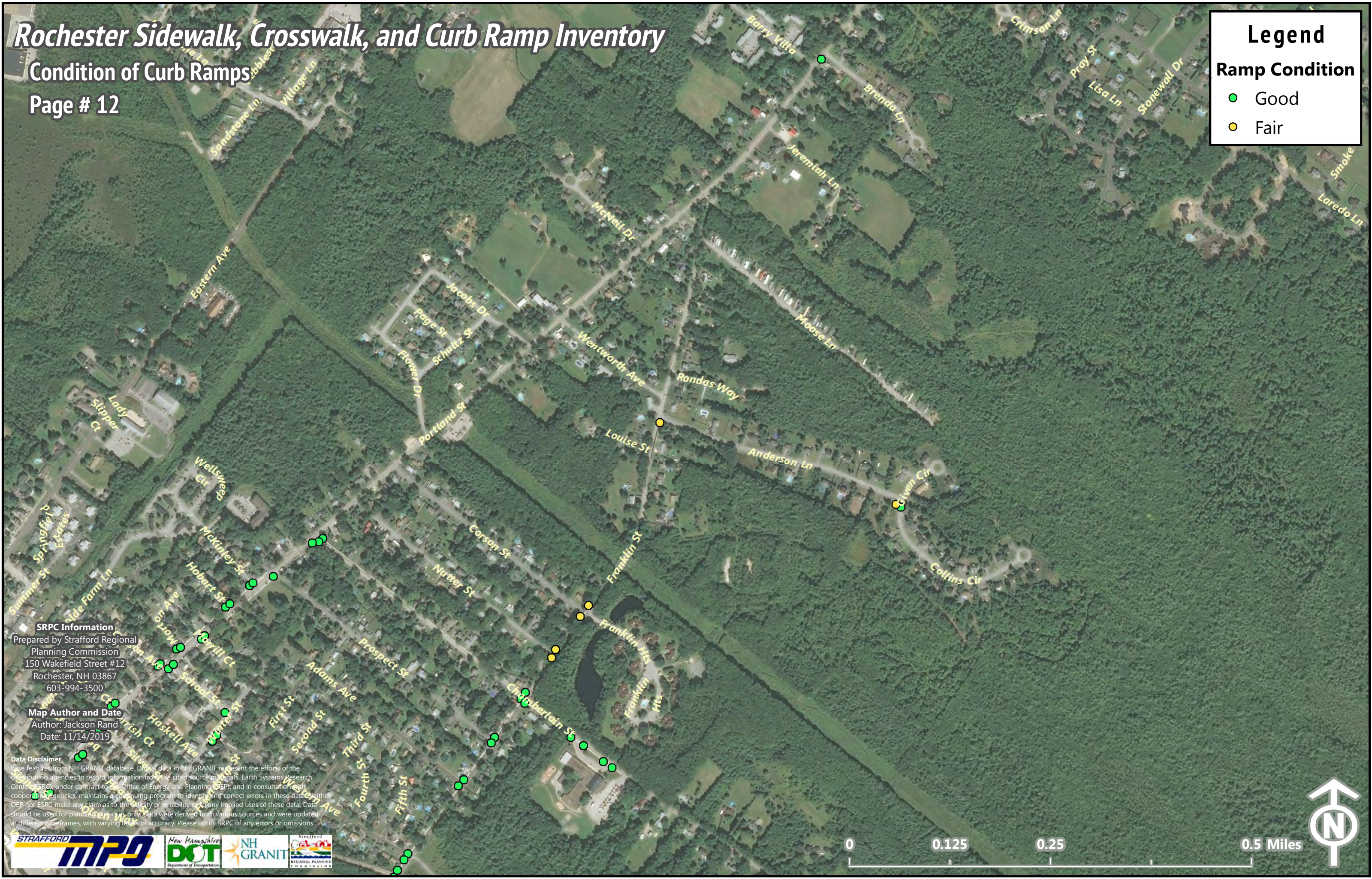
## Condition of Curb Ramps

Page # 12

### Legend

**Ramp Condition**

- Good
- Fair



**SRPC Information**  
Prepared by Strafford Regional  
Planning Commission  
150 Wakefield Street #12  
Rochester, NH 03867  
603-994-3500

**Map Author and Date**  
Author: Jackson Rand  
Date: 11/14/2019

**Data Disclaimer**  
Base features from NH GRANIT database. Digital data in NH GRANIT represent the efforts of the contributing agencies to record information from the cited source materials. Earth Systems Research Center (ESRC), under contract to the Office of Energy and Planning (OEP), and in consultation with cooperating agencies, maintains a continuing program to identify and correct errors in these data. Neither OEP nor ESRC make any claim as to the validity or reliability of any implied uses of these data. Data should be used for planning purposes only. Data were derived from various sources and were updated at different timeframes, with varying levels of accuracy. Please notify SRPC of any errors or omissions.



# Rochester Sidewalk, Crosswalk, and Curb Ramp Inventory

## Condition of Curb Ramps

Page # 13

### Legend

**Ramp Condition**

- Good
- Fair



**SRPC Information**  
Prepared by Strafford Regional  
Planning Commission  
150 Wakefield Street #12  
Rochester, NH 03867  
603-994-3500

**Map Author and Date**  
Author: Jackson Rand  
Date: 11/14/2019

**Data Disclaimer**  
Base features from NH GRANIT database. Digital data in NH GRANIT represent the efforts of the contributing agencies to record information from the cited source materials. Earth Systems Research Center (ESRC), under contract to the Office of Energy and Planning (OEP), and in consultation with cooperating agencies, maintains a continuing program to identify and correct errors in these data. Neither OEP nor ESRC make any claim as to the validity or reliability or to any implied uses of these data. Data should be used for planning purposes only. Data were derived from various sources and were updated at different timeframes, with varying levels of accuracy. Please notify SRPC of any errors or omissions.



# Rochester Sidewalk, Crosswalk, and Curb Ramp Inventory

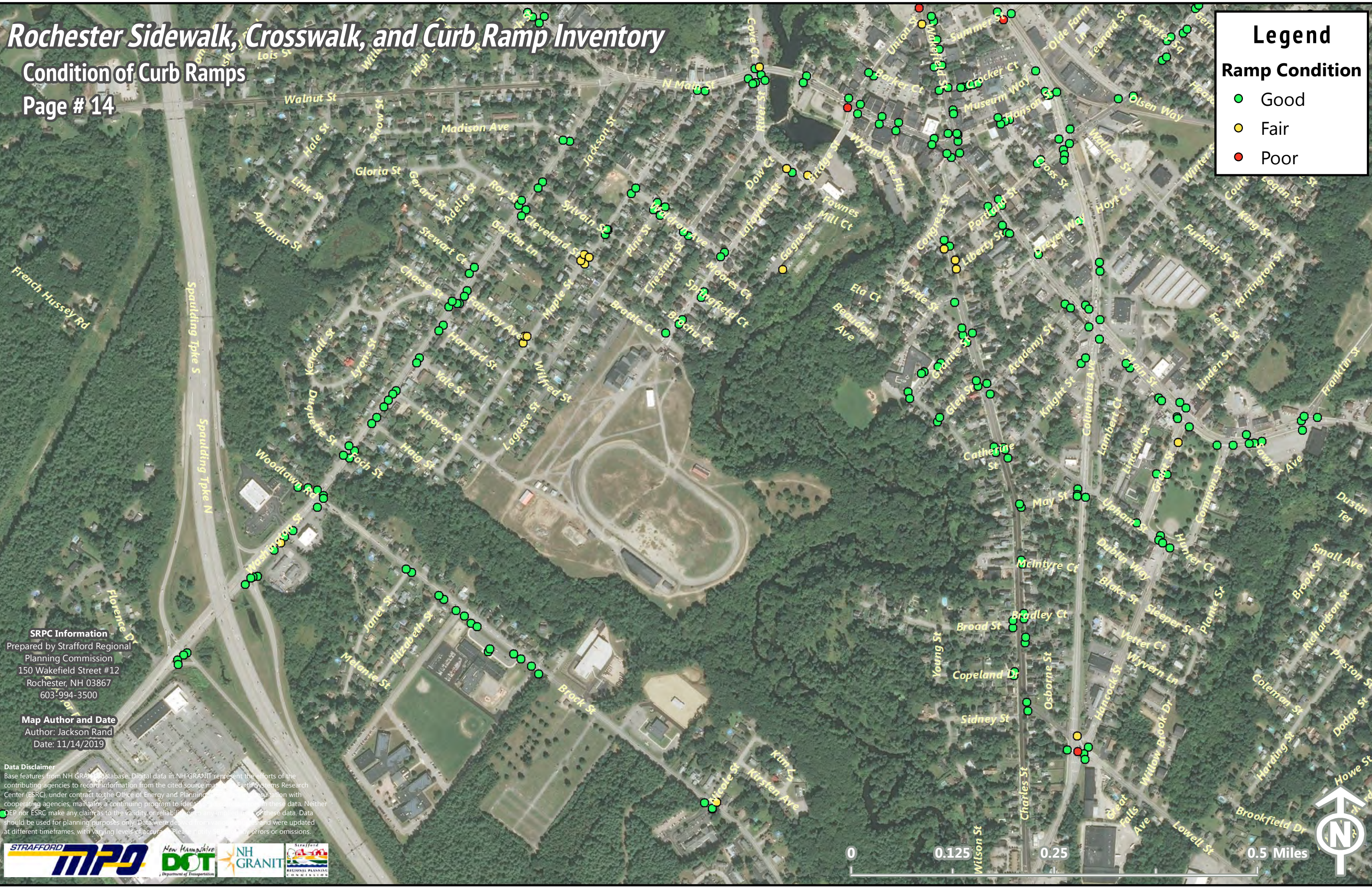
## Condition of Curb Ramps

Page # 14

### Legend

**Ramp Condition**

- Good
- Fair
- Poor



**SRPC Information**  
Prepared by Strafford Regional  
Planning Commission  
150 Wakefield Street #12  
Rochester, NH 03867  
603-994-3500

**Map Author and Date**  
Author: Jackson Rand  
Date: 11/14/2019

**Data Disclaimer**  
Base features from NH GRANIT database. Digital data in NH GRANIT represent the efforts of the contributing agencies to record information from the cited source maps. Earth Systems Research Center (ESRC), under contract to the Office of Energy and Planning, maintains a continuing program of identification and consultation with cooperating agencies, maintains a continuing program to identify and update information in these data. Neither ESRC nor ESRC make any claim as to the validity, or reliability, or accuracy of these data. Data should be used for planning purposes only. Data were derived from various sources and were updated at different timeframes, with varying levels of accuracy. Please notify us of any errors or omissions.



# Rochester Sidewalk, Crosswalk, and Curb Ramp Inventory

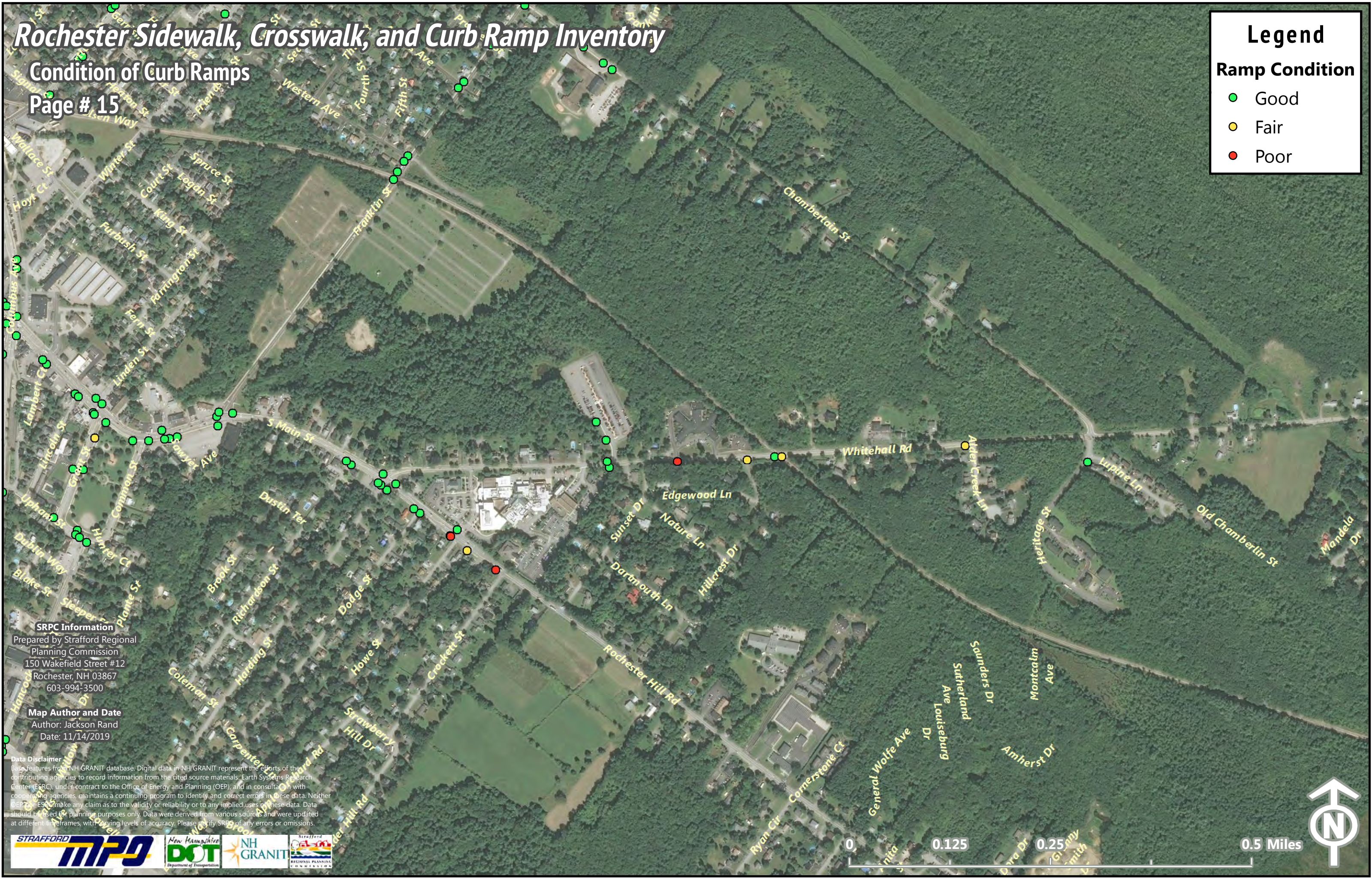
## Condition of Curb Ramps

Page # 15

### Legend

**Ramp Condition**

- Good
- Fair
- Poor



**SRPC Information**  
Prepared by Strafford Regional  
Planning Commission  
150 Wakefield Street #12  
Rochester, NH 03867  
603-994-3500

**Map Author and Date**  
Author: Jackson Rand  
Date: 11/14/2019

**Data Disclaimer**  
Base features from NH GRANIT database. Digital data in NH GRANIT represent the efforts of the contributing agencies to record information from the cited source materials. Earth Systems Research Center (ESRC), under contract to the Office of Energy and Planning (OEP), and in consultation with cooperating agencies, maintains a continuing program to identify and correct errors in these data. Neither OEP nor ESRC make any claim as to the validity or reliability or to any implied uses of these data. Data should be used for planning purposes only. Data were derived from various sources and were updated at different timeframes, with varying levels of accuracy. Please notify SRPC of any errors or omissions.



# Rochester Sidewalk, Crosswalk, and Curb Ramp Inventory

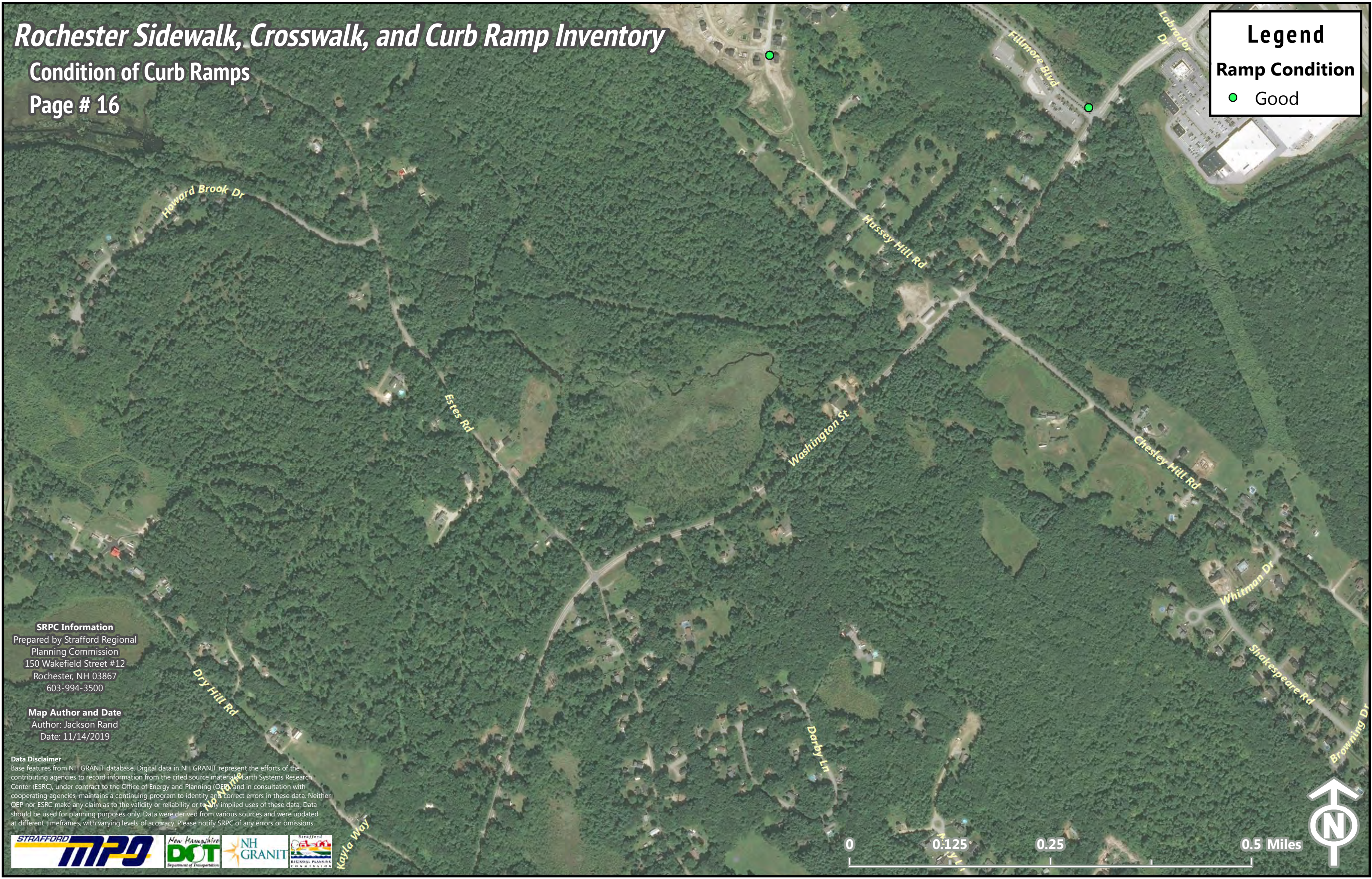
Condition of Curb Ramps

Page # 16

**Legend**

**Ramp Condition**

- Good



**SRPC Information**  
Prepared by Strafford Regional  
Planning Commission  
150 Wakefield Street #12  
Rochester, NH 03867  
603-994-3500

**Map Author and Date**  
Author: Jackson Rand  
Date: 11/14/2019

**Data Disclaimer**  
Base features from NH GRANIT database. Digital data in NH GRANIT represent the efforts of the contributing agencies to record information from the cited source materials. Earth Systems Research Center (ESRC), under contract to the Office of Energy and Planning (OEP) and in consultation with cooperating agencies, maintains a continuing program to identify and correct errors in these data. Neither OEP nor ESRC make any claim as to the validity or reliability or to any implied uses of these data. Data should be used for planning purposes only. Data were derived from various sources and were updated at different timeframes, with varying levels of accuracy. Please notify SRPC of any errors or omissions.





# Rochester Sidewalk, Crosswalk, and Curb Ramp Inventory

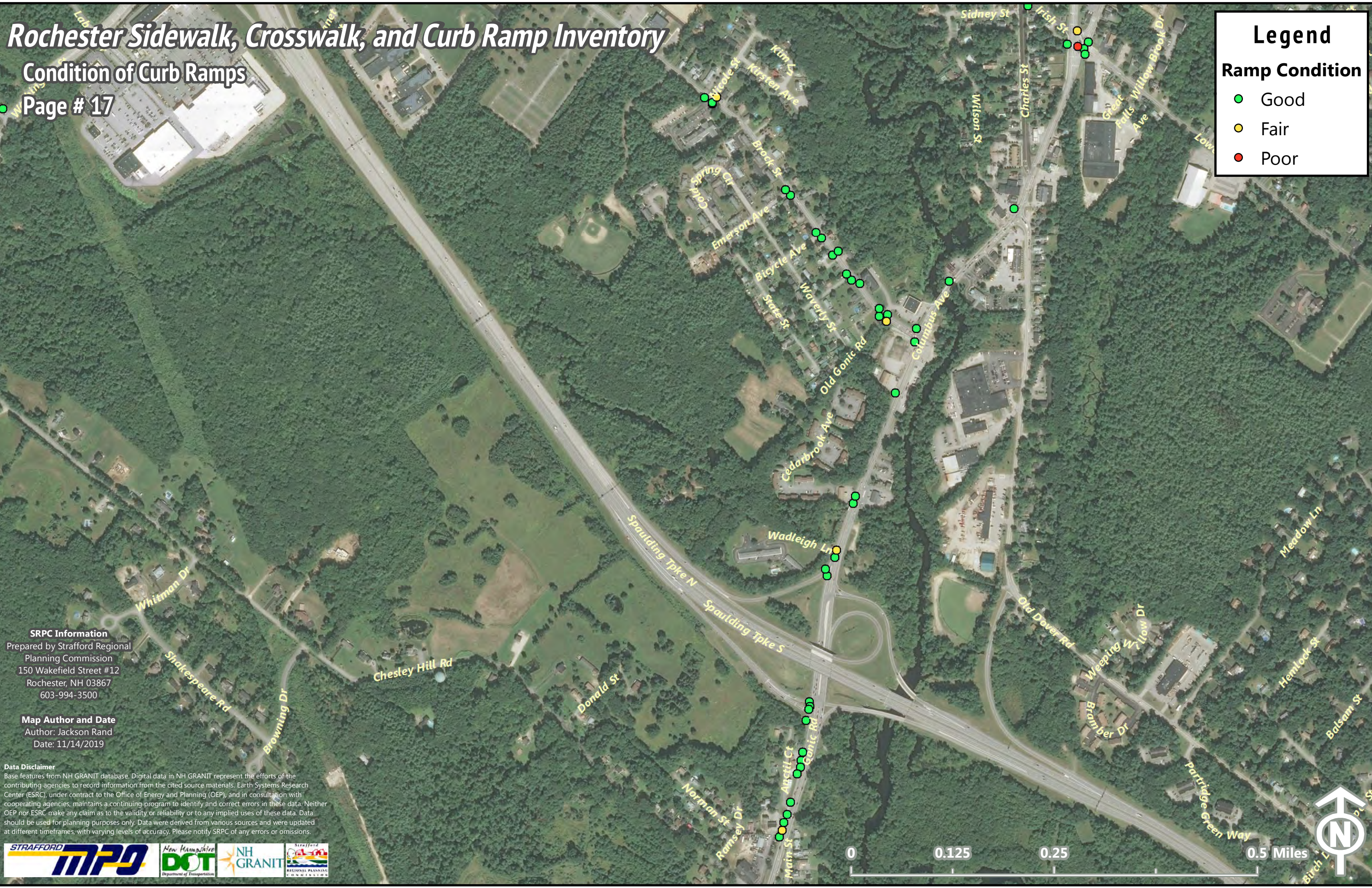
## Condition of Curb Ramps

Page # 17

### Legend

**Ramp Condition**

- Good
- Fair
- Poor



**SRPC Information**  
Prepared by Strafford Regional  
Planning Commission  
150 Wakefield Street #12  
Rochester, NH 03867  
603-994-3500

**Map Author and Date**  
Author: Jackson Rand  
Date: 11/14/2019

**Data Disclaimer**  
Base features from NH GRANIT database. Digital data in NH GRANIT represent the efforts of the contributing agencies to record information from the cited source materials. Earth Systems Research Center (ESRC), under contract to the Office of Energy and Planning (OEP), and in consultation with cooperating agencies, maintains a continuing program to identify and correct errors in these data. Neither OEP nor ESRC make any claim as to the validity or reliability or to any implied uses of these data. Data should be used for planning purposes only. Data were derived from various sources and were updated at different timeframes, with varying levels of accuracy. Please notify SRPC of any errors or omissions.



# Rochester Sidewalk, Crosswalk, and Curb Ramp Inventory

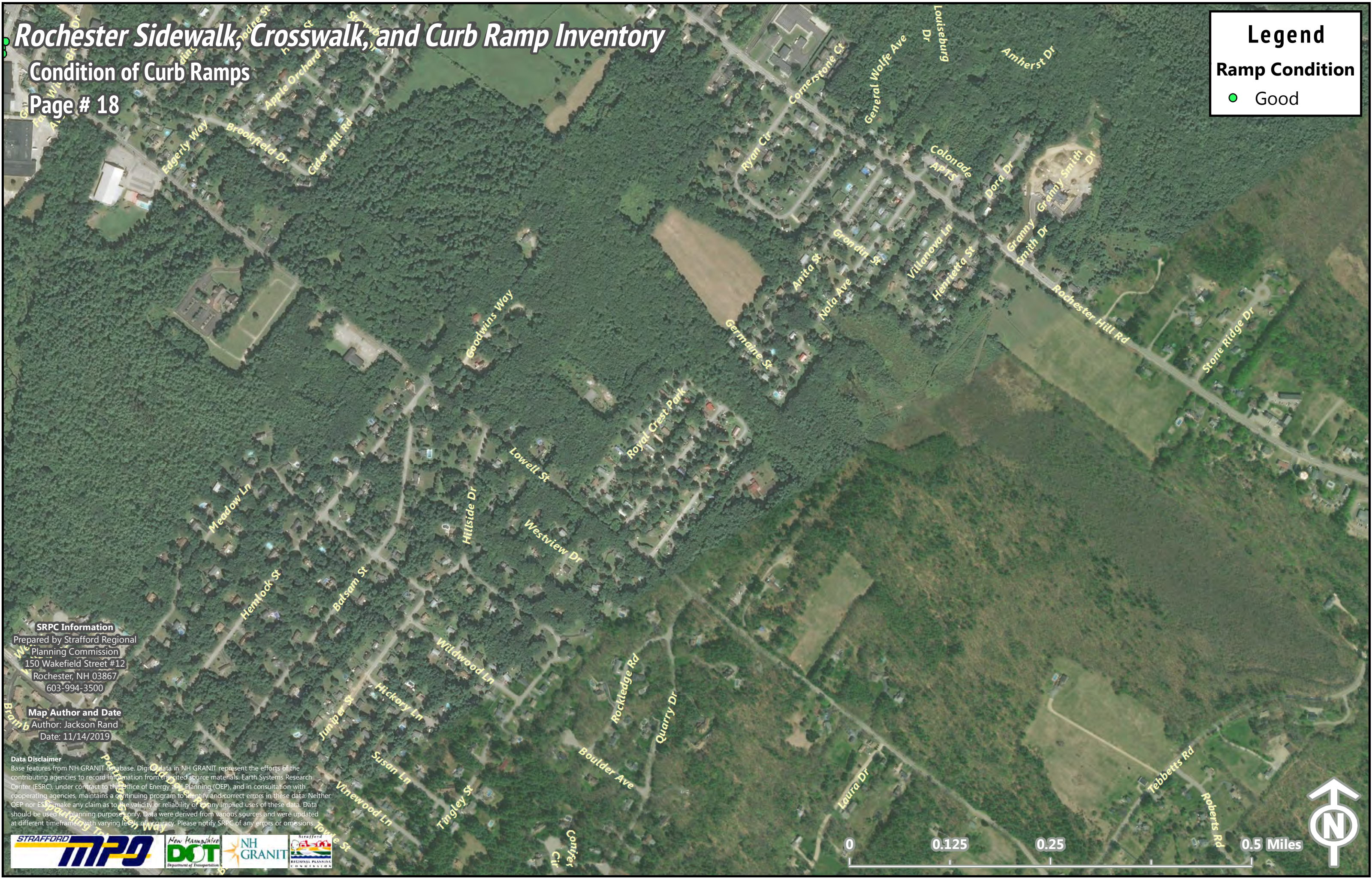
## Condition of Curb Ramps

Page # 18

**Legend**

**Ramp Condition**

- Good



**SRPC Information**  
Prepared by Strafford Regional  
Planning Commission  
150 Wakefield Street #12  
Rochester, NH 03867  
603-994-3500

**Map Author and Date**  
Author: Jackson Rand  
Date: 11/14/2019

**Data Disclaimer**  
Base features from NH GRANIT database. Digital data in NH GRANIT represent the efforts of the contributing agencies to record information from the cited source materials. Earth Systems Research Center (ESRC), under contract to the Office of Energy and Planning (OEP), and in consultation with cooperating agencies, maintains a continuing program to identify and correct errors in these data. Neither OEP nor ESRC make any claim as to the validity or reliability of, or any implied uses of these data. Data should be used for planning purposes only. Data were derived from various sources and were updated at different timeframes with varying levels of accuracy. Please notify SRPC of any errors or omissions.



# Rochester Sidewalk, Crosswalk, and Curb Ramp Inventory

## Condition of Curb Ramps

Page # 19

**Legend**  
**Ramp Condition**  
● Good



**SRPC Information**  
Prepared by Strafford Regional  
Planning Commission  
150 Wakefield Street #12  
Rochester, NH 03867  
603-994-3500

**Map Author and Date**  
Author: Jackson Rand  
Date: 11/14/2019

**Data Disclaimer**  
Base features from NH GRANIT database. Digital data in NH GRANIT represent the efforts of the contributing agencies to record information from the cited source materials. Earth Systems Research Center (ESRC), under contract to the Office of Energy and Planning (OEP), and in consultation with cooperating agencies, maintains a continuing program to identify and correct errors in these data. Neither OEP nor ESRC make any claim as to the validity or reliability or to any implied uses of these data. Data should be used for planning purposes only. Data were derived from various sources and were updated at different timeframes, with varying levels of accuracy. Please notify SRPC of any errors or omissions.



0 0.125 0.25 0.5 Miles

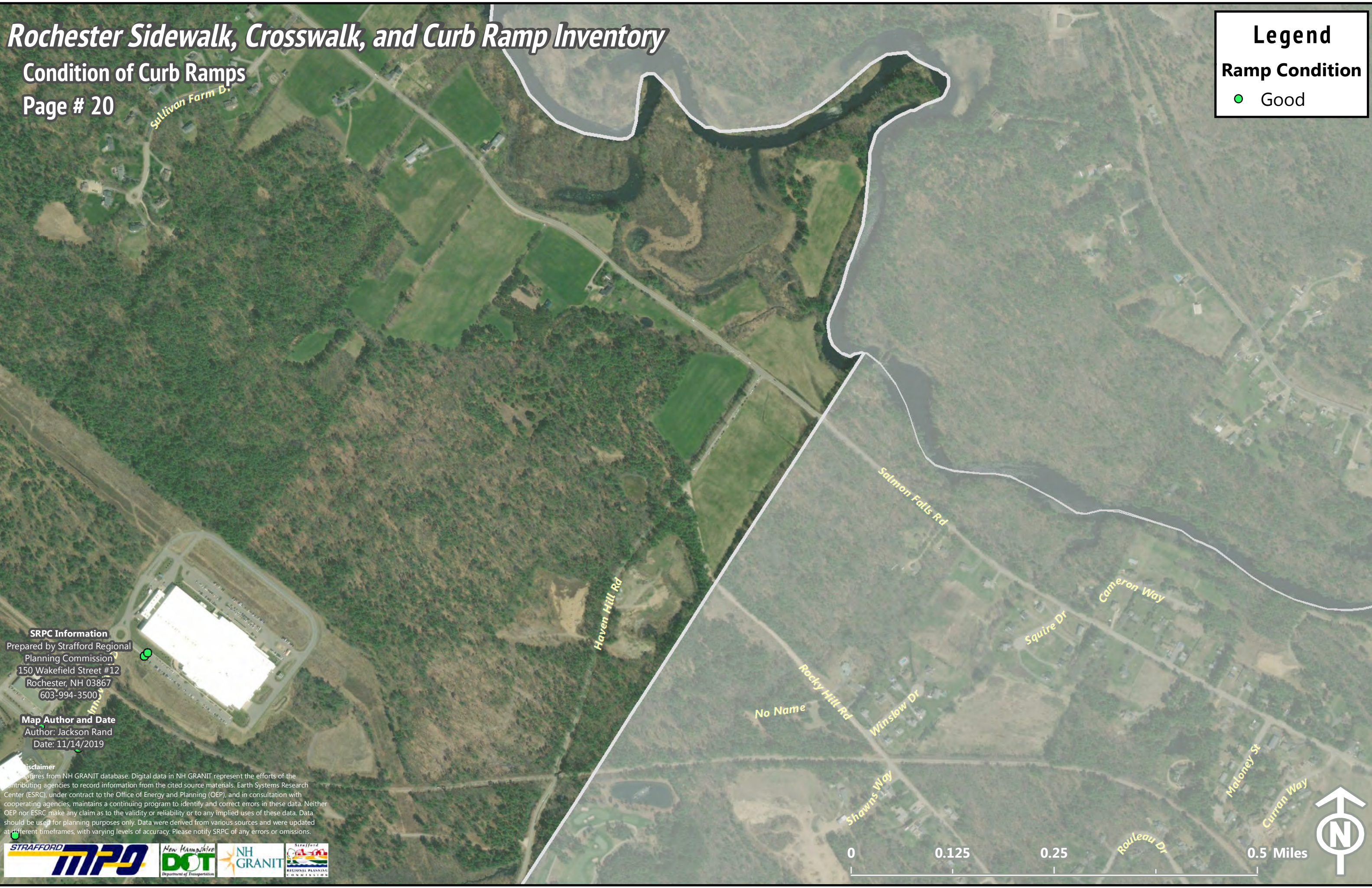


# Rochester Sidewalk, Crosswalk, and Curb Ramp Inventory

Condition of Curb Ramps

Page # 20

**Legend**  
**Ramp Condition**  
● Good



**SRPC Information**  
Prepared by Strafford Regional  
Planning Commission  
150 Wakefield Street #12  
Rochester, NH 03867  
603-994-3500

**Map Author and Date**  
Author: Jackson Rand  
Date: 11/14/2019

**Disclaimer**  
Data derived from NH GRANIT database. Digital data in NH GRANIT represent the efforts of the contributing agencies to record information from the cited source materials. Earth Systems Research Center (ESRC), under contract to the Office of Energy and Planning (OEP), and in consultation with cooperating agencies, maintains a continuing program to identify and correct errors in these data. Neither OEP nor ESRC make any claim as to the validity or reliability or to any implied uses of these data. Data should be used for planning purposes only. Data were derived from various sources and were updated at different timeframes, with varying levels of accuracy. Please notify SRPC of any errors or omissions.

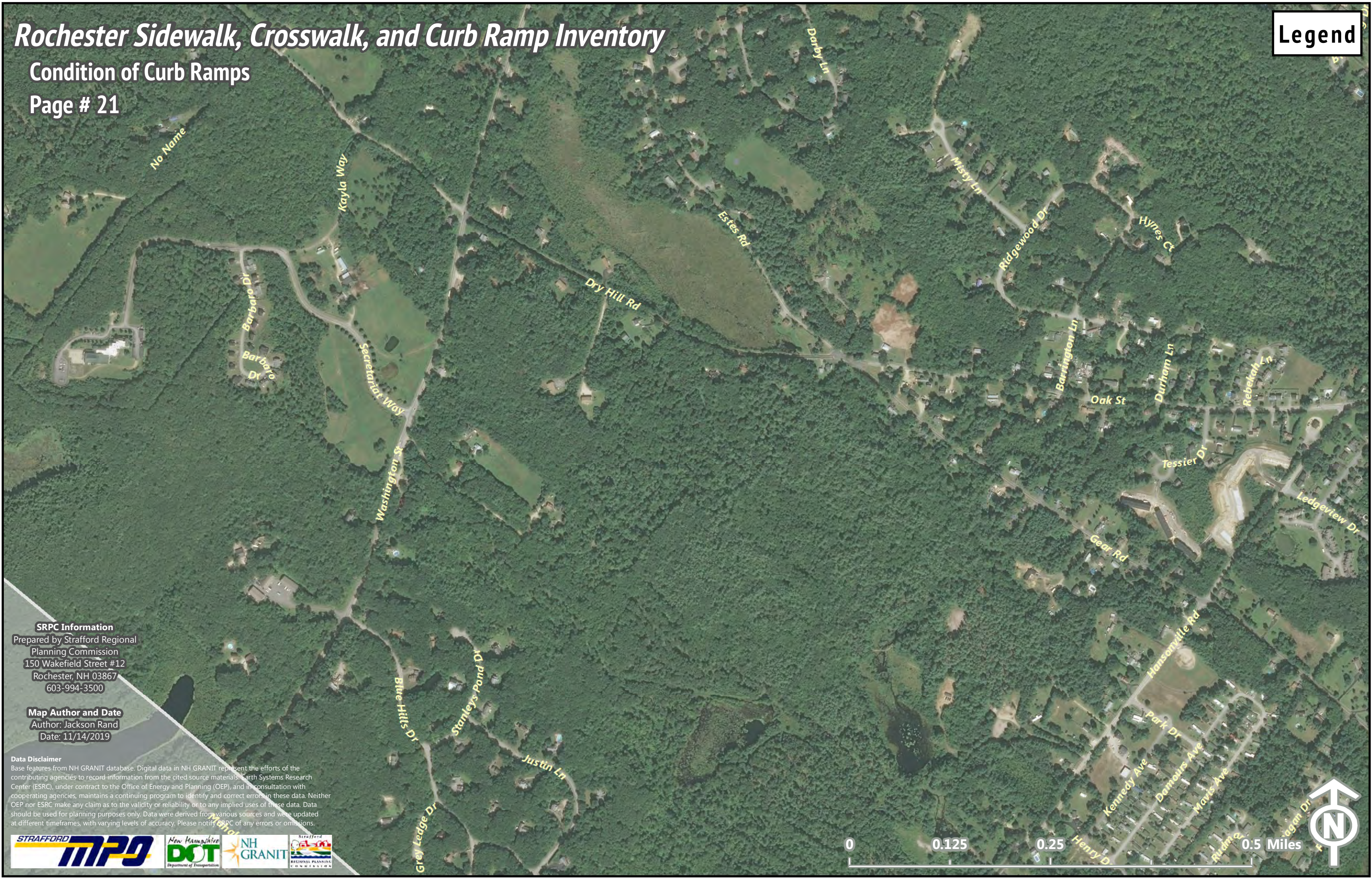


# Rochester Sidewalk, Crosswalk, and Curb Ramp Inventory

Condition of Curb Ramps

Page # 21

Legend



**SRPC Information**  
Prepared by Strafford Regional  
Planning Commission  
150 Wakefield Street #12  
Rochester, NH 03867  
603-994-3500

**Map Author and Date**  
Author: Jackson Rand  
Date: 11/14/2019

**Data Disclaimer**  
Base features from NH GRANIT database. Digital data in NH GRANIT represent the efforts of the contributing agencies to record information from the cited source materials. Earth Systems Research Center (ESRC), under contract to the Office of Energy and Planning (OEP), and in consultation with cooperating agencies, maintains a continuing program to identify and correct errors in these data. Neither OEP nor ESRC make any claim as to the validity or reliability or to any implied uses of these data. Data should be used for planning purposes only. Data were derived from various sources and were updated at different timeframes, with varying levels of accuracy. Please notify SRPC of any errors or omissions.



# Rochester Sidewalk, Crosswalk, and Curb Ramp Inventory

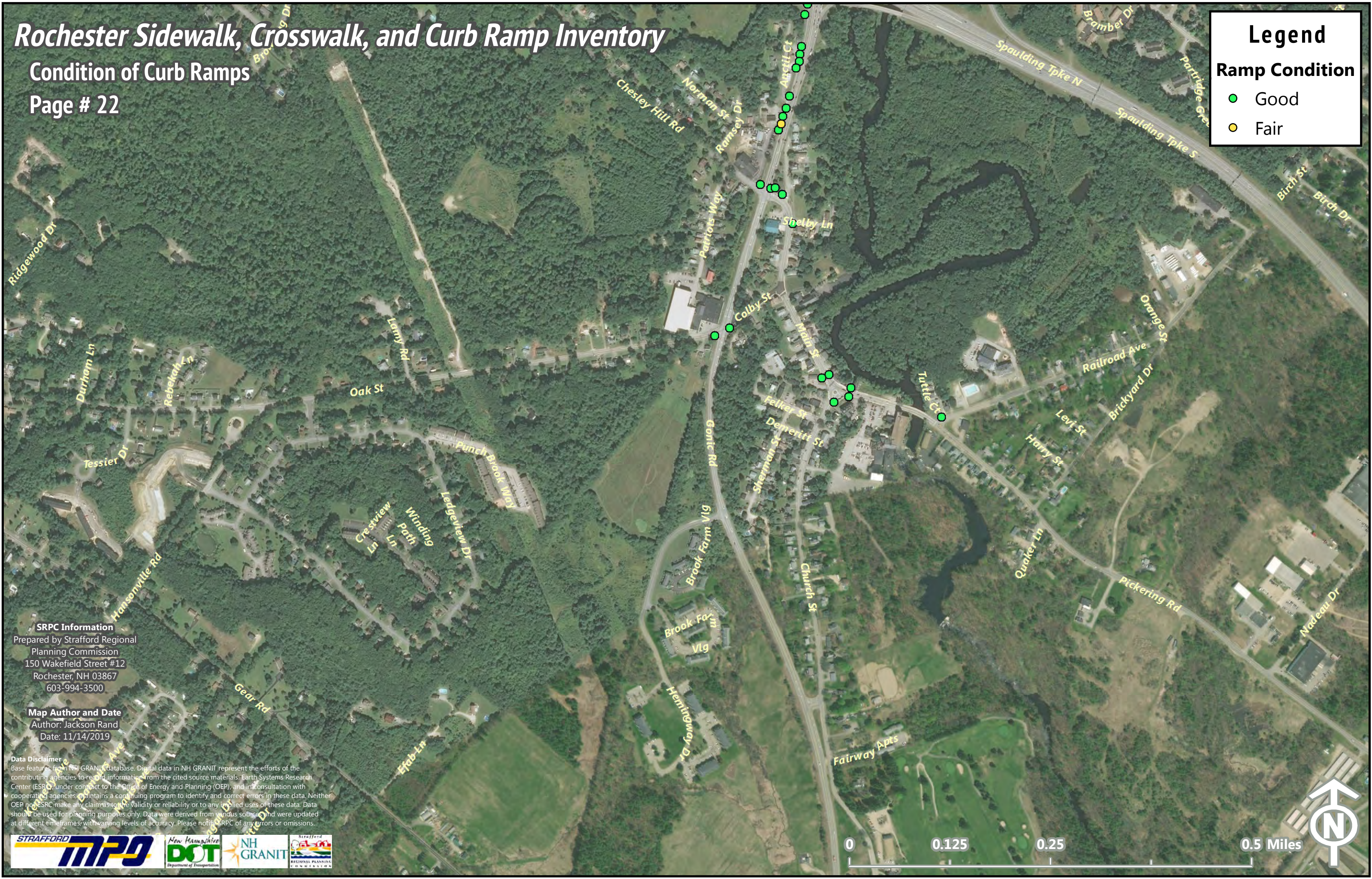
## Condition of Curb Ramps

Page # 22

### Legend

**Ramp Condition**

- Good
- Fair



**SRPC Information**  
Prepared by Strafford Regional  
Planning Commission  
150 Wakefield Street #12  
Rochester, NH 03867  
603-994-3500

**Map Author and Date**  
Author: Jackson Rand  
Date: 11/14/2019

**Data Disclaimer**  
Base features from NH GRANIT database. Digital data in NH GRANIT represent the efforts of the contributing agencies to record information from the cited source materials. Earth Systems Research Center (ESRC), under contract to the Office of Energy and Planning (OEP), and in consultation with cooperating agencies, maintains a continuing program to identify and correct errors in these data. Neither OEP nor ESRC make any claims to the validity or reliability or to any implied uses of these data. Data should be used for planning purposes only. Data were derived from various sources and were updated at different timeframes with varying levels of accuracy. Please notify SRPC of any errors or omissions.



# Rochester Sidewalk, Crosswalk, and Curb Ramp Inventory

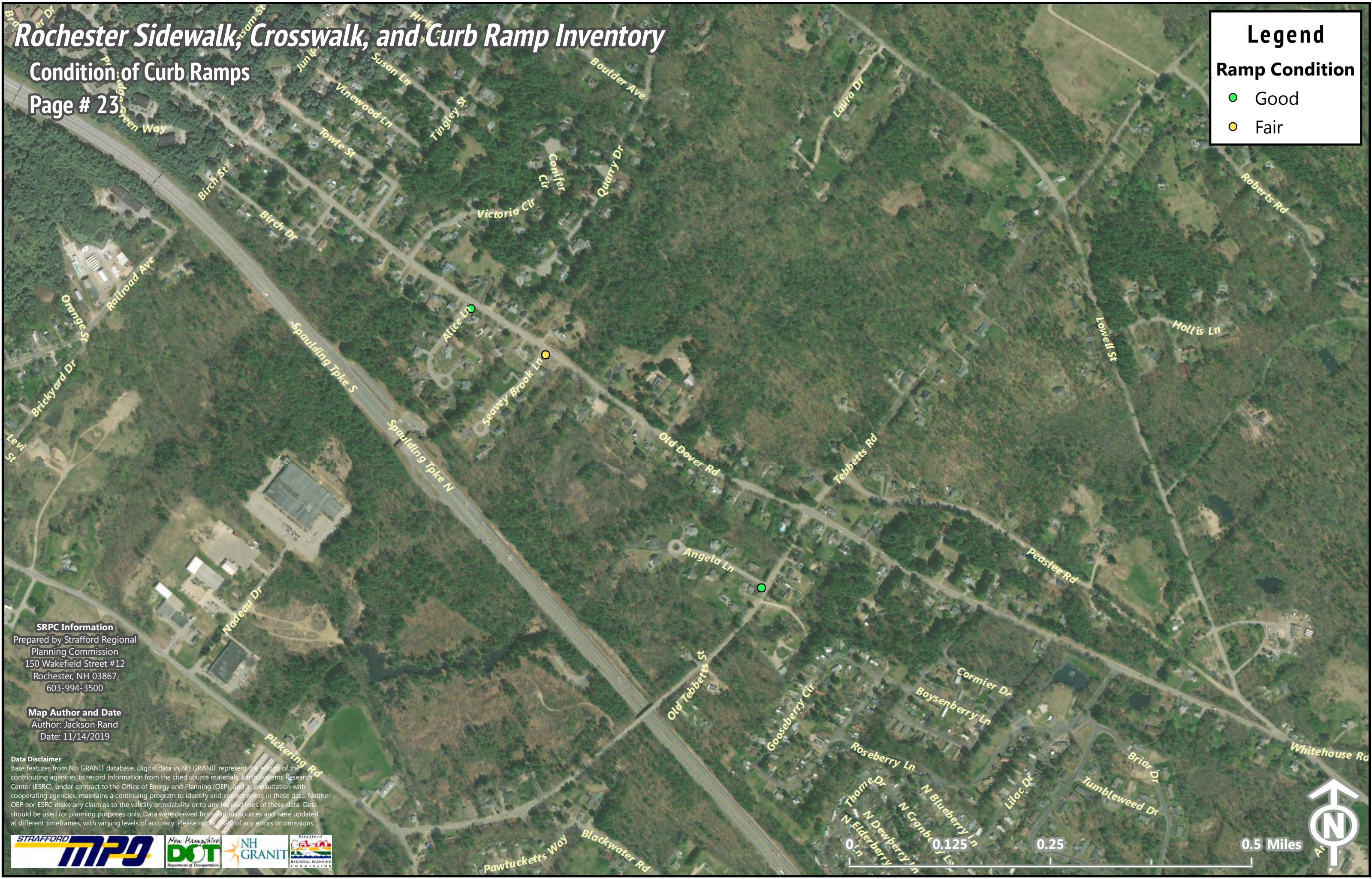
## Condition of Curb Ramps

Page # 23

### Legend

**Ramp Condition**

- Good
- Fair



**SRPC Information**  
Prepared by Strafford Regional  
Planning Commission  
150 Wakefield Street #12  
Rochester, NH 03867  
603-994-3500

**Map Author and Date**  
Author: Jackson Rand  
Date: 11/14/2019

**Data Disclaimer**  
Base features from NH GRANIT database. Digital data in NH GRANIT represent the efforts of the contributing agencies to record information from the cited source materials. Earth Systems Research Center (ESRC), under contract to the Office of Energy and Planning (OEP), and in consultation with cooperating agencies, maintains a continuing program to identify and correct errors in these data. Neither OEP nor ESRC make any claim as to the validity or reliability or to any implied uses of these data. Data should be used for planning purposes only. Data were derived from various sources and were updated at different timeframes, with varying levels of accuracy. Please notify SRPC of any errors or omissions.



0.125 0.25 0.5 Miles

# Rochester Sidewalk, Crosswalk, and Curb Ramp Inventory

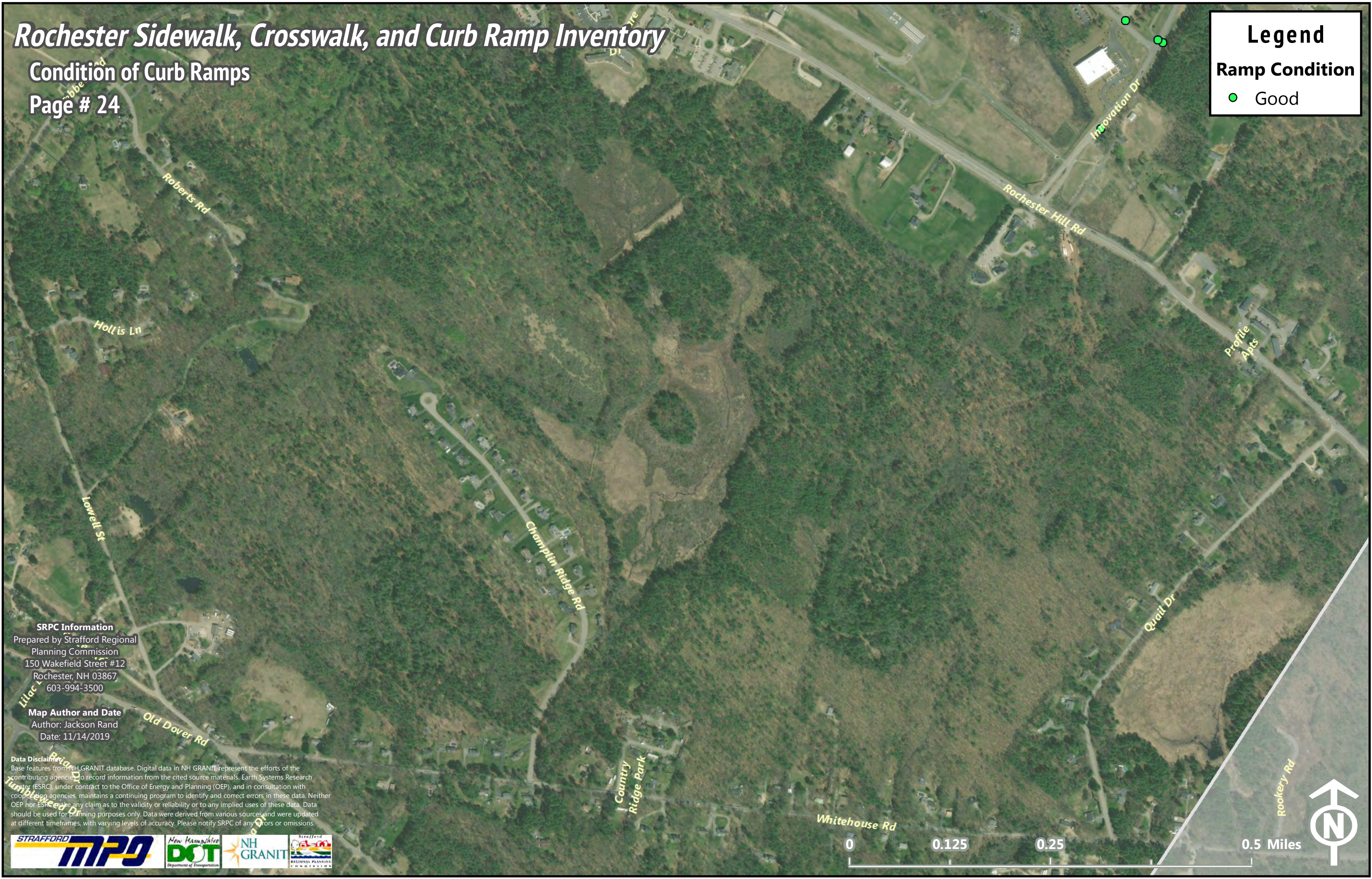
Condition of Curb Ramps

Page # 24

**Legend**

**Ramp Condition**

- Good



**SRPC Information**  
Prepared by Strafford Regional  
Planning Commission  
150 Wakefield Street #12  
Rochester, NH 03867  
603-994-3500

**Map Author and Date**  
Author: Jackson Rand  
Date: 11/14/2019

**Data Disclaimer**  
Base features from NH GRANIT database. Digital data in NH GRANIT represent the efforts of the contributing agencies to record information from the cited source materials. Earth Systems Research Center (ESRC), under contract to the Office of Energy and Planning (OEP), and in consultation with cooperating agencies, maintains a continuing program to identify and correct errors in these data. Neither OEP nor ESRC make any claim as to the validity or reliability or to any implied uses of these data. Data should be used for planning purposes only. Data were derived from various sources and were updated at different timeframes, with varying levels of accuracy. Please notify SRPC of any errors or omissions.

