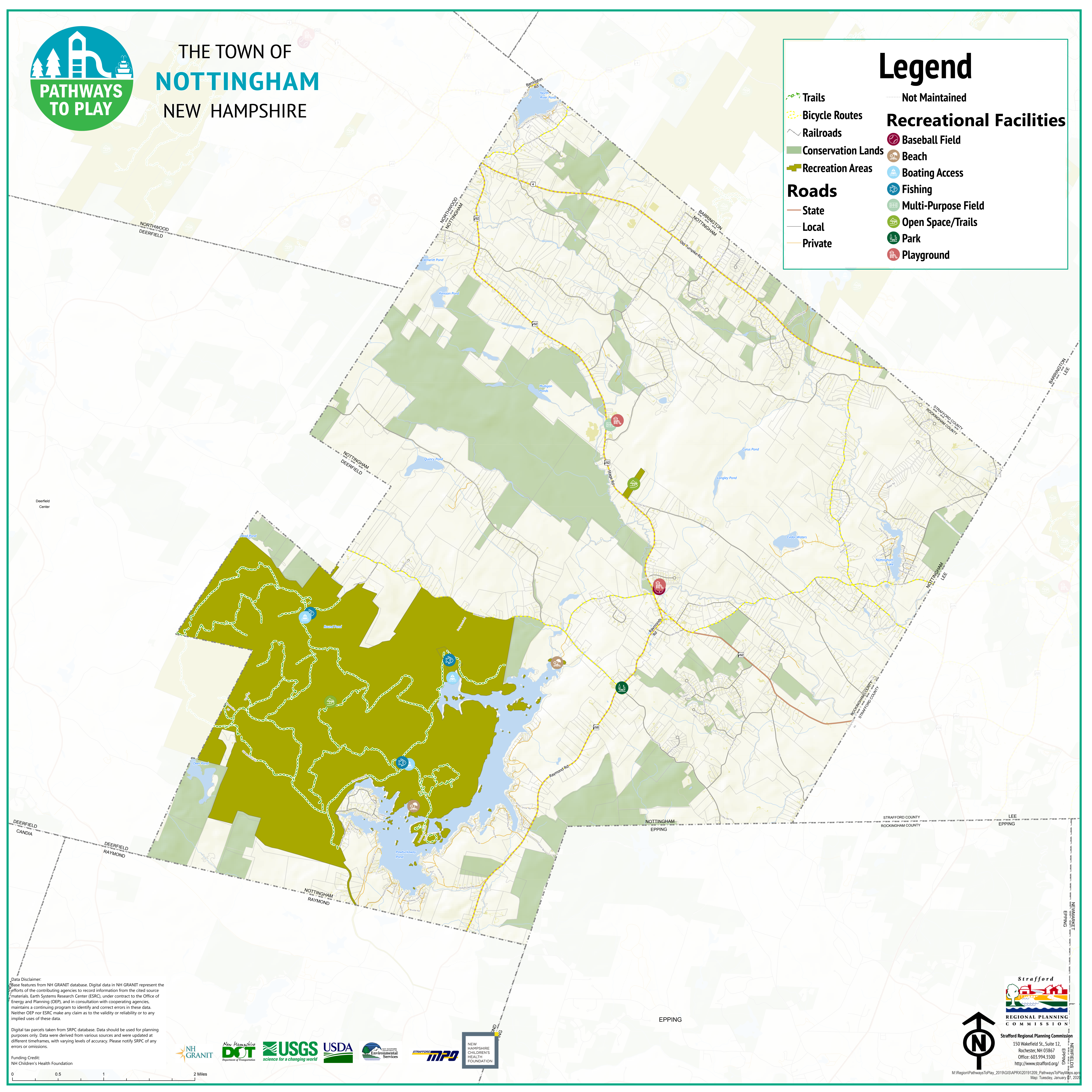




THE TOWN OF
NOTTINGHAM
NEW HAMPSHIRE

Legend

- Trails
- Bicycle Routes
- Railroads
- Conservation Lands
- Recreation Areas
- Roads
 - State
 - Local
 - Private
- Not Maintained
- Recreational Facilities
 - Baseball Field
 - Beach
 - Boating Access
 - Fishing
 - Multi-Purpose Field
 - Open Space/Trails
 - Park
 - Playground



Data Disclaimer:
Base features from NH GRANIT database. Digital data in NH GRANIT represent the efforts of the contributing agencies to record information from the cited source materials. Earth Systems Research Center (ESRC), under contract to the Office of Energy and Planning (OEP), and in consultation with cooperating agencies, maintains a continuing program to identify and correct errors in these data. Neither OEP nor ESRC make any claim as to the validity or reliability or to any implied uses of these data.

Digital tax parcels taken from SRPC database. Data should be used for planning purposes only. Data were derived from various sources and were updated at different timeframes, with varying levels of accuracy. Please notify SRPC of any errors or omissions.

Funding Credit:
NH Children's Health Foundation



Strafford
REGIONAL PLANNING COMMISSION
Strafford Regional Planning Commission
150 Wakefield St., Suite 12,
Rochester, NH 03867
Office: 603.994.3500
http://www.strafford.org

