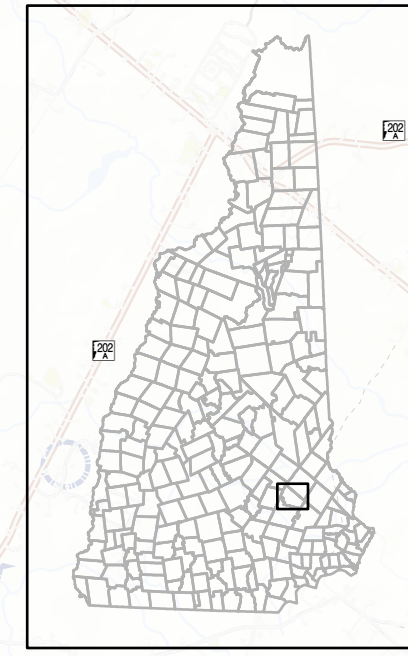
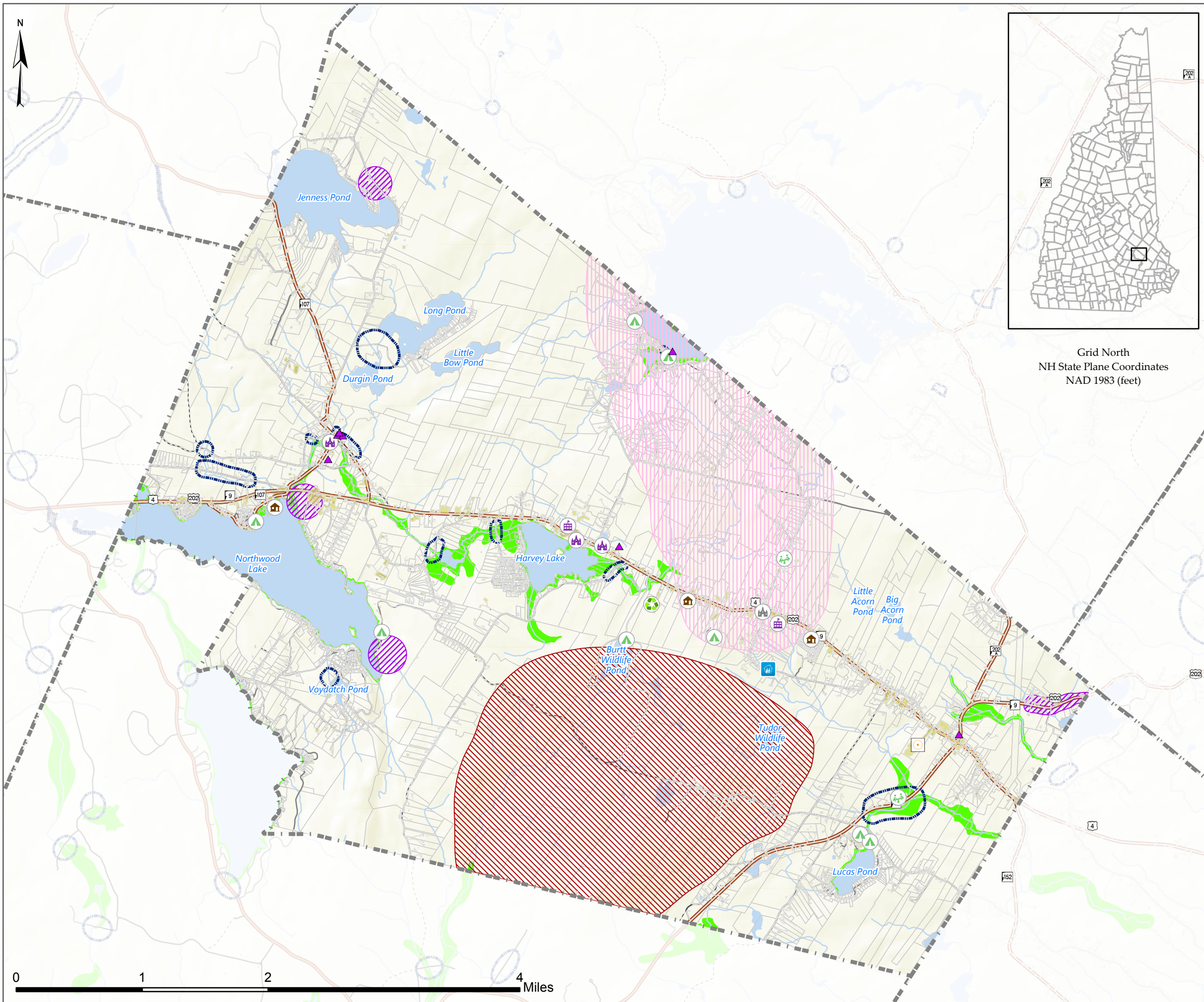
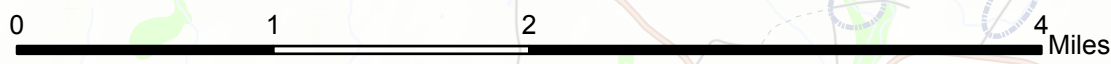


Facilities and Populations to Protect

Hazard Mitigation Plan (2019)
NORTHWOOD, NH



Grid North
NH State Plane Coordinates
NAD 1983 (feet)



Facilities and Populations to Protect 11x17

Facilities and Populations to Protect

- Assisted Living
- Hazardous Materials Facility
- Historic Facility
- Licensed Child Care Programs
- Manufactured Housing
- Recreational Facility
- Recycling / Disposal of Waste
- Religious Facility
- Religious Facility (Closed)
- School

Past Hazards

- Forest Fire
- Ice Storm
- Microburst
- Past Flooding
- FEMA 100-year Floodplain

- Lot Lines Northwood
- Impervious Surface

Water Bodies

- Lakes and Ponds
- Streams and rivers

Transportation

- State
- Local
- Private
- Not Maintained
- Railroads

Data Sources:

Base features are from USGS 1:24,000 scale Digital Line Graphs, as archived in the GRANIT database. All base features distributed by Complex Systems Research Center, Durham, NH. Digital data in NH GRANIT represent the efforts of the contributing agencies to record information from the cited source materials. Complex Systems Research Center, under contract to the NH Office of State Planning and in consultation with cooperating agencies, maintains a continuing program to identify and correct errors in these data. OSP, CSRC and the cooperating agencies make no claim as to the validity or reliability or to any implied uses of these data.

Prepared by:

Strafford Regional Planning Commission
150 Wakefield St, Suite 12, Rochester, NH 03867
T: (603) 994-3500 F: (603) 994-3504
Em: srpc@strafford.org
Date: August 2019

Maps prepared by Strafford Regional Planning Commission are for planning purposes only.

