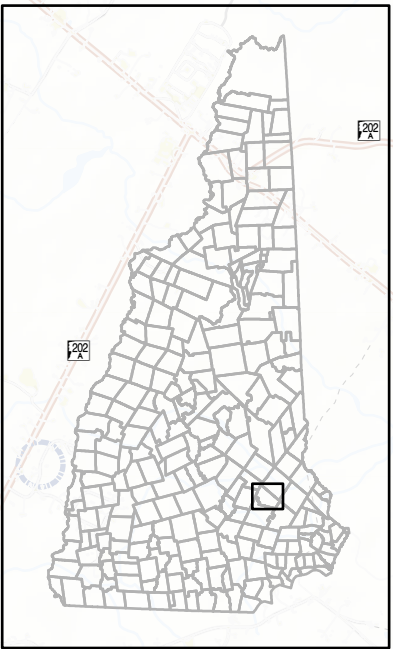
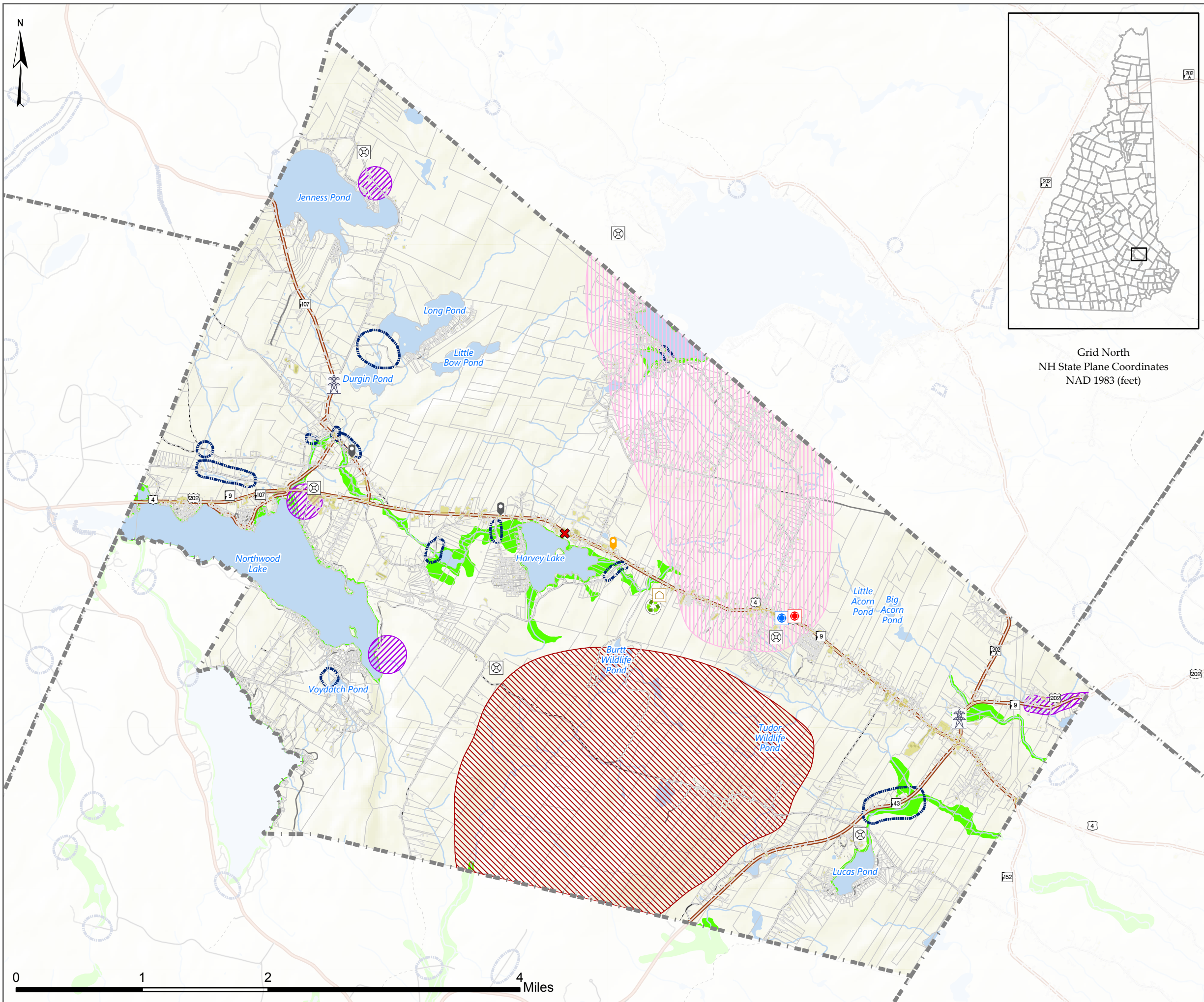


# Critical Facilities and Key Resources

## Hazard Mitigation Plan (2019)

### NORTHWOOD, NH



Grid North  
NH State Plane Coordinates  
NAD 1983 (feet)

#### Emergency Response Facilities

- Back-up EOC
- Back-up EOC/Warming Station
- Emergency Operations Center
- Emergency Shelter
- Point of Dispensing (POD)
- Public Works Facility

#### Non-Emergency Response Facilities

- Power Station
- Recycling / Disposal of Waste

#### Potential Resources

- Fire / Rescue Landing Zone

#### Past Hazards

- Forest Fire
- Ice Storm
- Microburst
- Past Flooding
- FEMA 100-year Floodplain

- Lot Lines Northwood
- Impervious Surface

#### Water Bodies

- Lakes and Ponds
- Streams and rivers

#### Transportation

- State
- Local
- Private
- Not Maintained
- Railroads

#### Data Sources:

Base features are from USGS 1:24,000 scale Digital Line Graphs, as archived in the GRANIT database. All base features distributed by Complex Systems Research Center, Durham, NH. Digital data in NH GRANIT represent the efforts of the contributing agencies to record information from the cited source materials. Complex Systems Research Center, under contract to the NH Office of State Planning and in consultation with cooperating agencies, maintains a continuing program to identify and correct errors in these data. OSP, CSRC and the cooperating agencies make no claim as to the validity or reliability or to any implied uses of these data.

#### Prepared by:

Strafford Regional Planning Commission  
150 Wakefield St, Suite 12, Rochester, NH 03867  
T: (603) 994-3500 F: (603) 994-3504  
Em: srpc@strafford.org  
Date: August 2019

Maps prepared by Strafford Regional Planning Commission are for planning purposes only.

