



The Climate Risk in the Seacoast: Assessing Vulnerability of Municipal Assets and Resources to Climate Change (C-RiSe) project provides maps and assessments of flood impacts to infrastructure and natural resources in the coastal Great Bay region associated with projected increases in storm surge, sea level, and precipitation.

TOWN OF NEWMARKET

Map 11: Climate Ready Culverts
Sea-Level Rise 1.7', 4.0', 6.3'

CRiSe Culvert/Crossing ID

Grid Key:

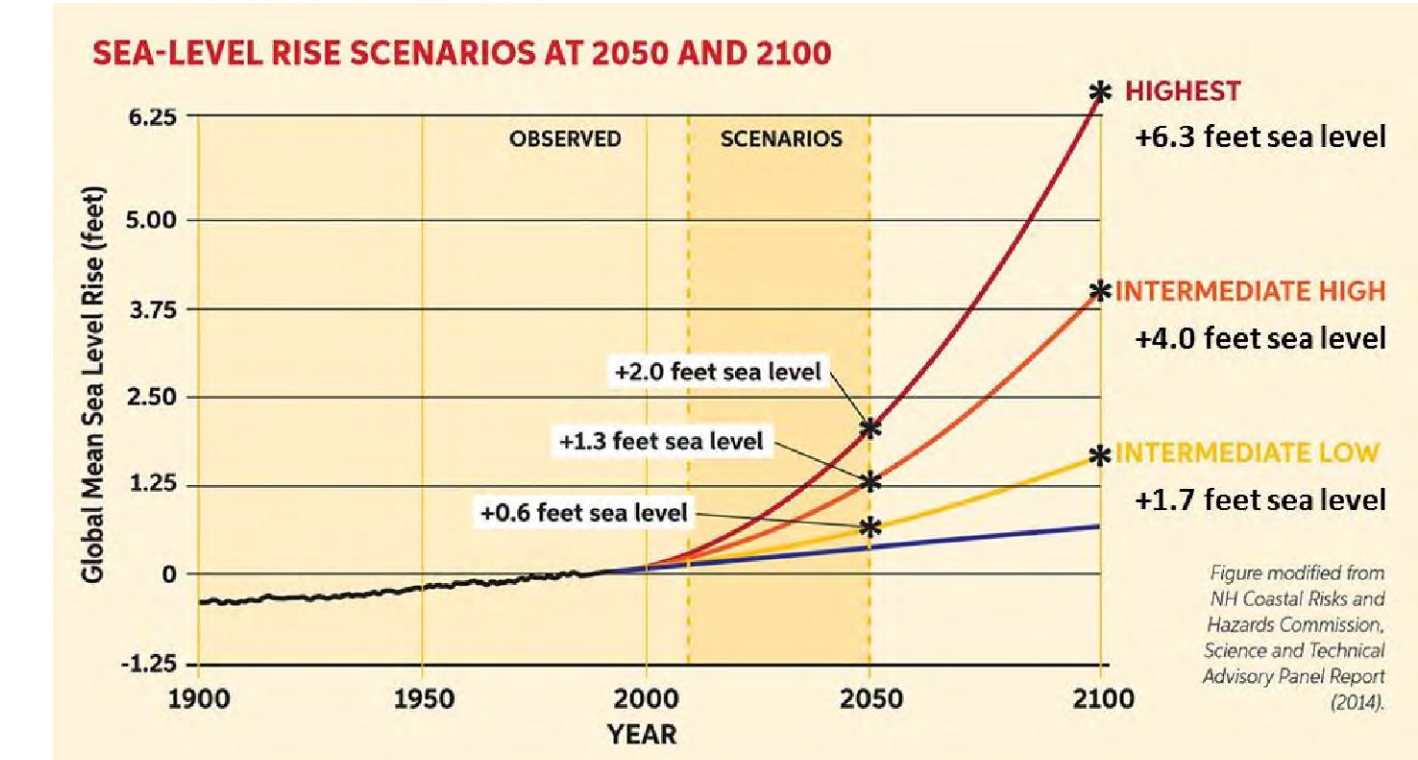
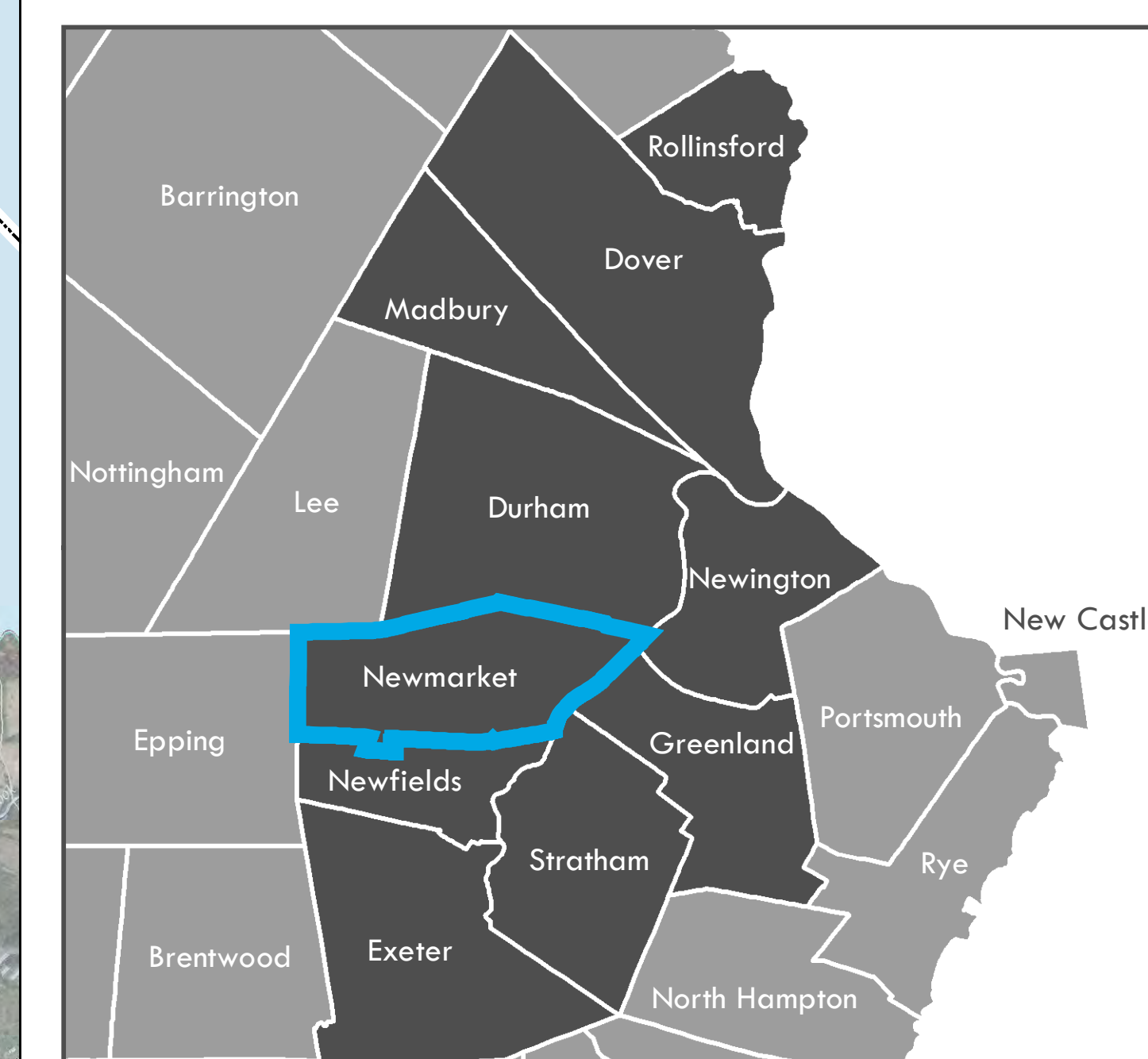
10 -YR Rating	25-YR Rating	10-YR: Rating for the water's surface elevation at the inlet for the 10-yr flood flow
50-YR Rating	100-YR Rating	25-YR: Rating for the water's surface elevation at the inlet for the 25-yr flood flow
		50-YR: Rating for the water's surface elevation at the inlet for the 50-yr flood flow
		100-YR: Rating for the water's surface elevation at the inlet for the 100-yr flood flow

Hydraulic Ranking Key:

- Pass: Headwater stage is below the lowest top of top of culvert at the site
- Transitional: Headwater stage is between the lowest top of culvert and the top of the road
- Fail: Headwater stage overtops the road

Aquatic Organism Passage (AOP) Key

- No AOP
- No AOP - Adult Salmonids
- Reduced AOP
- Full AOP



Sea-Level Rise Scenarios
Please note that the sea-level rise scenarios used in this assessment were derived from the Wake, 2011 report (refer to table of values below from this report). These scenarios were selected prior to the release of the Science and Technical Advisory Panel Report to the N.H. Coastal Risks & Hazards Commission, in August, 2014 [1]. While slightly different than the scenarios cited in that report, they yield coverage estimates that are within the mapping margin of error.

[1] Wake CP, Kintner P, Huber M, Knott K, and Stomporo M (2014) Sea-level Rise, Storm Surges, and Extreme Precipitation in Coastal New Hampshire: Analysis of Past and Projected Future Trends, prepared by the Science and Technical Advisory Panel (STAP) for the New Hampshire Coastal Risks and Hazards Commission.

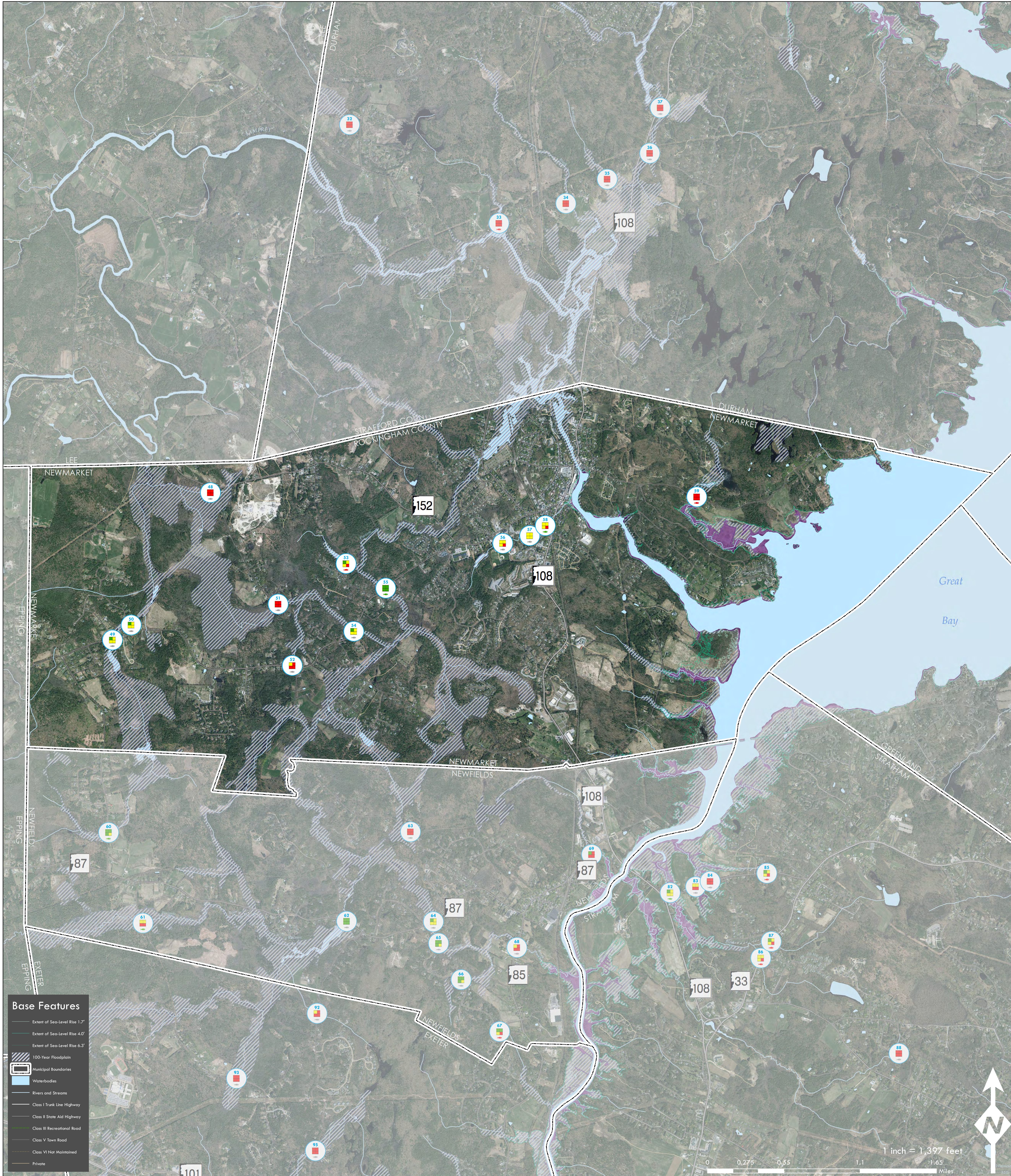
	2050		2100	
	Lower	Higher	Lower	Higher
Current Elevation of MHHW ^{a,b}	4.4	4.4	4.4	4.4
100-Year Flood Height	6.8	6.8	6.8	6.8
Subsidence	0.0	0.0	0.0	0.0
Elastic SLR	1.0	1.7	2.5	6.3
Total Stillwater Elevation ^{c,c}	12.2	12.9	13.7	17.5

^a NAVD: North American Vertical Datum of 1988
^b MHHW: Mean Higher High Water at Fort Point, NH
^c Total Stillwater Elevation may not equal total of components due to rounding

Prepared by the Strafford Regional Planning Commission
150 Wakefield St. Suite 12 Rochester, NH 03867
T: (603) 994-3500 E: srpc@strafford.org

Date: 12/15/2016 Author: MS/RR/JL/KP
Path: M:\Region\Project_Special_Merit\Mapping\Culverts_1_3.mxd

Data Sources:
Data sets were retrieved from the NH GRANIT database, December, 2015. Digital data in NH GRANIT represent the efforts of the contributing agencies to record information from the cited source materials. Earth Systems Research Center (ESRC), under contract to the Office of Energy & Planning (OEP), and in consultation with cooperating agencies, maintains a continuing program to identify and correct errors in these data. Neither OEP nor ESRC make any claim as to the validity or reliability or to any implied uses of these data.



Base Features

- Extent of Sea-Level Rise 1.7'
- Extent of Sea-Level Rise 4.0'
- Extent of Sea-Level Rise 6.3'
- 100-Year Floodplain
- Municipal Boundaries
- Waterbodies
- Rivers and Streams
- Class I Trunk Line Highway
- Class II State Aid Highway
- Class III Recreational Road
- Class V Town Road
- Class VI Not Maintained
- Private

Culvert Crossing ID & Location	*Precipitation Flood Flow				***Aquatic Organism Passage (AOP) Rating
	10-YR	25-YR	50-YR	100-YR	
	**Hydraulic Rating				
#48: Ashwamp Rd near Lee Rd over unnamed stream	Fail	Fail	Fail	Fail	Reduced AOP
#49: Grant Rd over unnamed stream	Pass	Transitional	Transitional	Transitional	Reduced AOP
#50: Grant Rd over Piscataic River	Pass	Transitional	Transitional	Transitional	Reduced AOP
#51: Grant Rd over unnamed stream	Fail	Fail	Fail	Fail	Reduced AOP
#52: Grant Rd near Neal Mill Rd over unnamed stream	Transitional	Fail	Fail	Fail	Reduced AOP
#53: Lang Ln over unnamed stream	Pass	Transitional	Transitional	Fail	No AOP
#54: Grant Rd near Ash Swamp Rd over unnamed stream	Pass	Transitional	Transitional	Transitional	Reduced AOP
#55: Grant Rd near Lang Rd over unnamed stream	Pass	Pass	Pass	Pass	Full AOP
#56: Private Rd over Moonlight Brook	Transitional	Transitional	Transitional	Fail	Reduced AOP
#57: Maple St over Moonlight Brook	Transitional	Transitional	Transitional	Transitional	Reduced AOP
#58: Railroad crossing near end of Railroad St over Moonlight Brook	Transitional	Transitional	Transitional	Fail	Full AOP
#59: Bay Rd over Lubberland Creek	Fail	Fail	Fail	Fail	No AOP