



The Climate Risk in the Seacoast: Assessing Vulnerability of Municipal Assets and Resources to Climate Change (C-RiSe) project provides maps and assessments of flood impacts to infrastructure and natural resources in the coastal Great Bay region associated with projected increases in storm surge, sea level, and precipitation.

CITY OF DOVER

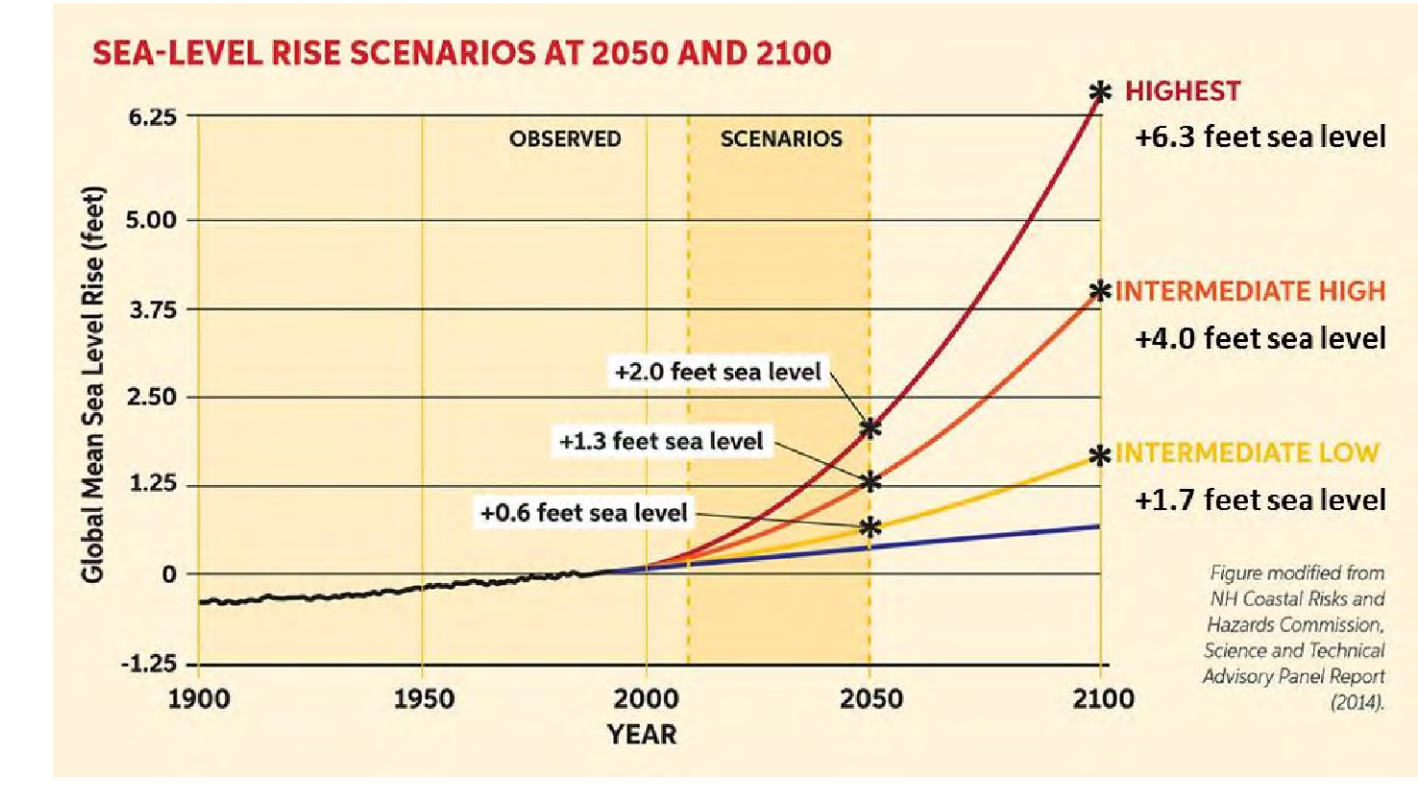
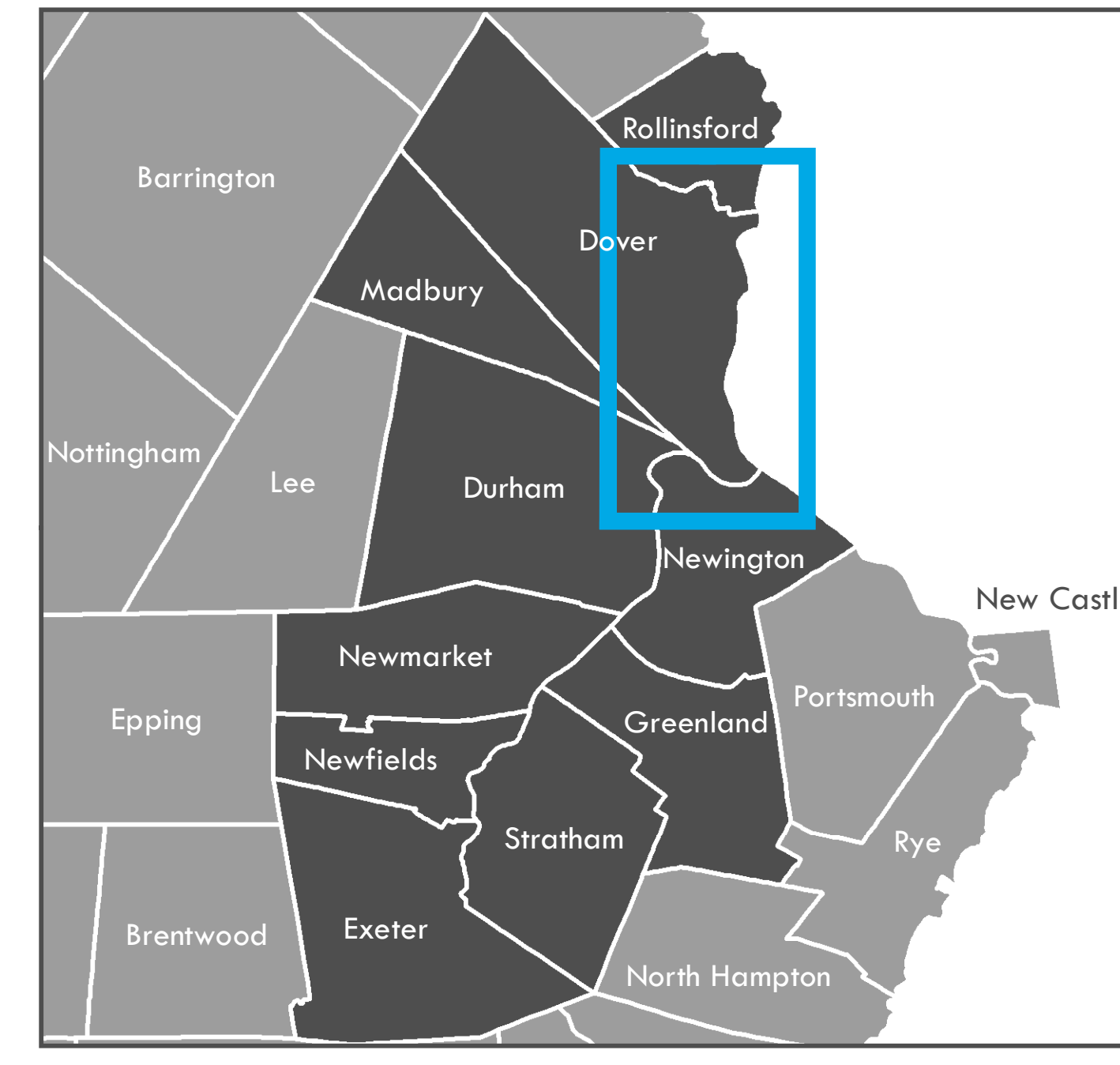
Map 8: Land Resources
Sea-Level Rise + Storm Surge 1.7', 4.0', 6.3'

SLR Legend

- Extent of Sea-Level Rise of 1.7 with Storm Surge
- Extent of Sea-Level Rise of 4.0' with Storm Surge
- Extent of Sea-Level Rise of 6.3' with Storm Surge
- Approximate Mean High High Water Level

Impact Legend

- Conservation Lands (2015)
- Wildlife Action Plan Tiles 1.2,3 (2015)



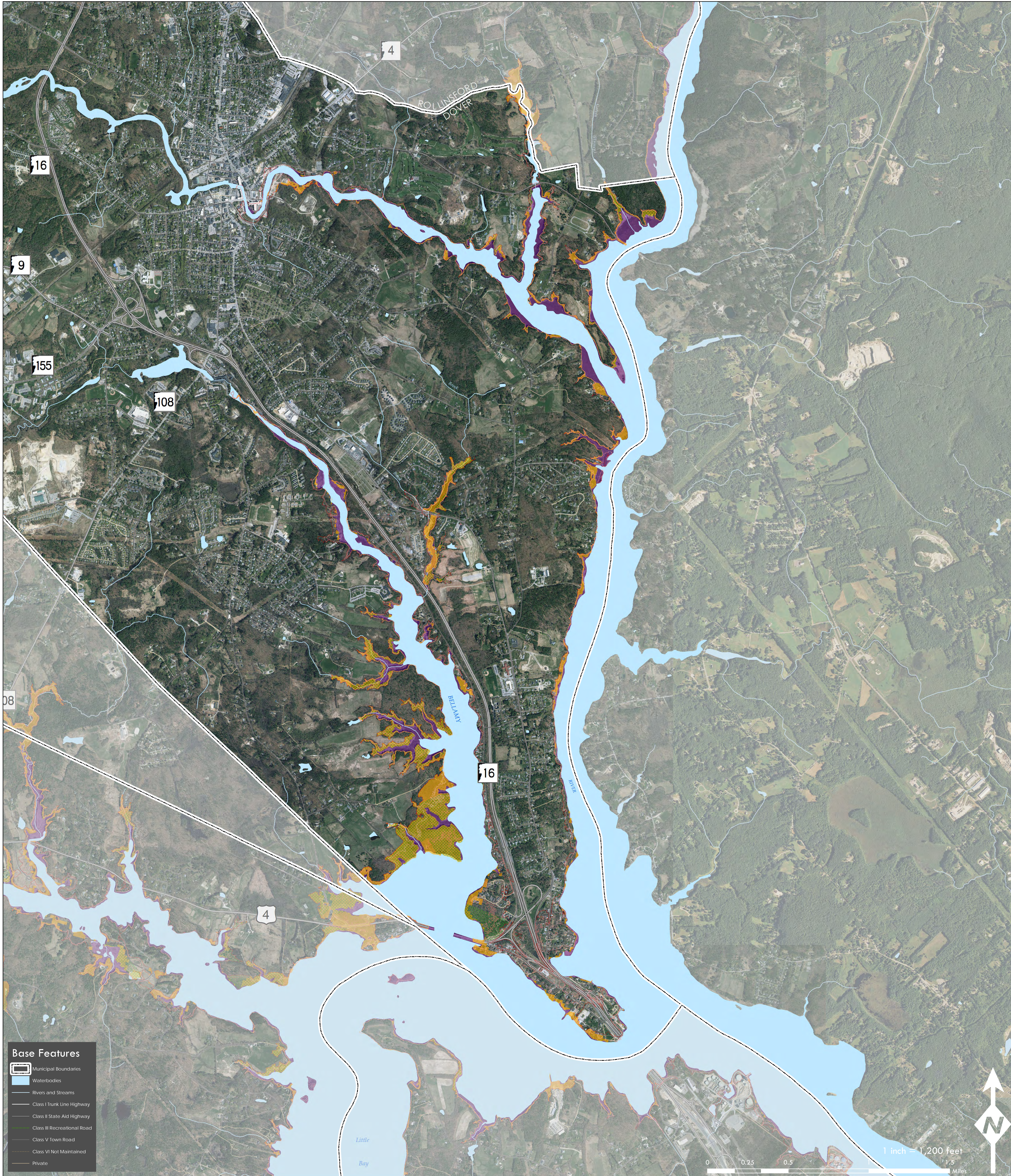
Sea-Level Rise Scenarios
Please note that the sea-level rise scenarios used in this assessment were derived from the Wake, 2011 report (refer to table of values below from this report). These scenarios were selected prior to the release of the Science and Technical Advisory Panel Report to the N.H. Coastal Risks & Hazards Commission, in August, 2014 [1]. While slightly different than the scenarios cited in that report, they yield coverage estimates that are within the mapping margin of error.

[1] Wake CP, Kintner P, Huber M, Knott K, and Stomporo M (2014) Sea-level Rise, Storm Surges, and Extreme Precipitation in Coastal New Hampshire: Analysis of Past and Projected Future Trends, prepared by the Science and Technical Advisory Panel (STAP) for the New Hampshire Coastal Risks and Hazards Commission.

	2050		2100	
	Lower	Higher	Lower	Higher
Current Elevation of MHHW ^{a,b}	4.4	4.4	4.4	4.4
100-Year Flood Height	6.8	6.8	6.8	6.8
Subsidence	0.0	0.0	0.0	0.0
Elastic SLR	1.0	1.7	2.5	6.3
Total Stillwater Elevation ^{c,c}	12.2	12.9	13.7	17.5

^a - NAVD: North American Vertical Datum of 1988
^b - MHHW: Mean Higher High Water at Fort Point, NH
^c - Total Stillwater Elevation may not equal total of components due to rounding

Prepared by the Strroford Regional Planning Commission
150 Wakefield St. Suite 12 Rochester, NH 03867
T: (603) 994-3500 E: srp@strroford.org
Date: 12/14/2016 Author: MS/PP/JL/KP
Path: M:\Region\Project_Special_Merit\Mapping\Final_Maps_By_Community\Dover_LandRes_4_6.mxd
Data Sources:
Data sets were retrieved from the NH GRANIT database, December, 2015. Digital data in NH GRANIT represent the efforts of the contributing agencies to record information from the cited source materials. Earth Systems Research Center (ESRC), under contract to the Office of Energy & Planning (OEP), and in consultation with cooperating agencies, maintains a continuing program to identify and correct errors in these data. Neither OEP nor ESRC make any claim as to the validity or reliability or to any implied uses of these data.
The C-RiSe project is funded by the National Oceanic and Atmospheric Administration under the Coastal Zone Management Act (CZMA) Enhancement Program. Projects of Special Merit for FY 2015, authorized under Section 309 of the CZMA (16 U.S.C. § 1456b).



Base Features

- Municipal Boundaries
- Waterbodies
- Rivers and Streams
- Class I Trunk Line Highway
- Class II State Aid Highway
- Class III Recreational Road
- Class V Town Road
- Class VI Not Maintained
- Private

Land Resource Impacts: City of Dover (acres)														
Resource Type	Name	Sea Level + Storm Surge Scenarios			Resource Type	Name	Sea Level + Storm Surge Scenarios			Resource Type	Name	Sea Level + Storm Surge Scenarios		
		1.7 feet	4.0 feet	6.3 feet			1.7 feet	4.0 feet	6.3 feet			1.7 feet	4.0 feet	6.3 feet
Conservation Lands	Bellamy River Wildlife Sanctuary	12.98	22.61	25.25	Conservation Lands	Holt Lot	2.84	7.72	8.31	Conservation Lands	Tuttle Farm	4.62	5.39	6.07
	Bellamy River WMA - West	17.35	22.05	47.57		Huggins Easement	3.88	15.17	24.71		Wisteria Drive OSS	0.08	0.10	0.13
	Business Partners	0.79	1.13	1.45		MacLachy Conservation Easement	0.81	0.99	1.05		Woodwind Farms LLC	1.13	1.81	2.53
	Captain's Landing Conservation Easement	0.36	0.51	0.63		McElhenry OSS Conservation Easement	2.67	3.55	4.13		Tier 1	86.63	122.93	144.55
	City of Dover Land	1.93	2.76	3.49		Molleur	0.23	0.49	0.82		Tier 2	4.77	7.31	11.82
	Cocheo River Mouth	1.65	2.98	4.46		Nute Tract and Whitehouse Tract	10.92	15.26	18.04		Tier 3	35.70	66.83	110.28
	Davis Easement	0.28	0.40	0.55		Overlook Subdivision Wetlands - Lot M83	0.42	1.97	3.27		Total(s) Combined	197.23	312.41	433.04
	Dover Point Road	1.15	1.67	2.14		The Schooner Landing OSS	0.09	0.22	0.33					
	Franklin	2.31	2.92	3.45		Three Rivers Farm	1.54	2.33	3.05					
	Great Bay Megastite	0.21	0.33	0.48		TNC, Valpey, Dover	1.89	2.98	4.47					