

Bicycle Level of Traffic Stress: Access to Destinations



Prepared by
**Strafford Regional
 Planning Commission**
 150 Wakefield Street #12
 Rochester, NH 03867
 603-994-3500

Author: Rachel Dewey
 Date: 4/20/2020

Legend

Stress Level

- Low Stress (1+2)
- High Stress (3+4)

Accessible Destinations

- 0%
- 0.001% - 25%
- 25.001% - 50%
- 50.001% - 75%
- 75.001% - 100%

Base Layers

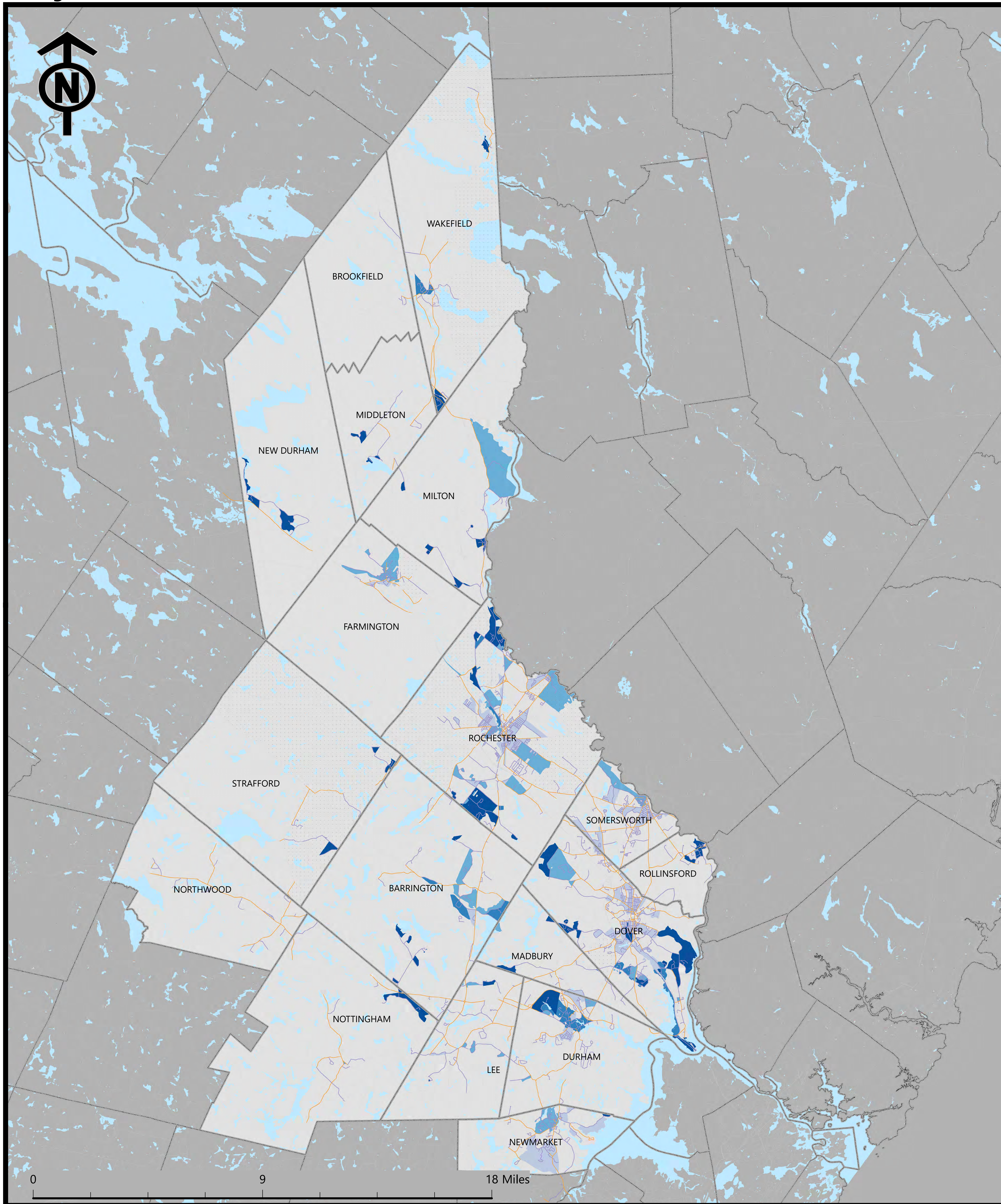
- Municipalities
- Title VI Populations
- Water
- Roads

Access to destinations is the percent of schools, town halls, or large employers within 2 miles of a block that can be accessed on the low stress network.

Blocks that have good access to destinations will have a higher percent of destinations.

Areas with no shading do not have destinations within 2 miles.

Base features from NH GRANIT database. Digital data in NH GRANIT represent the efforts of the contributing agencies to record information from the cited source materials. Earth Systems Research Center (ESRC), under contract to the Office of Energy and Planning (OEP), and in consultation with cooperating agencies, maintains a continuing program to identify and correct errors in these data. Neither OEP nor ESRC make any claim as to the validity or reliability or to any implied uses of these data. Data should be used for planning purposes only. Data were derived from various sources and were updated at different timeframes, with varying levels of accuracy. Please notify SRPC of any errors or omissions. Base imagery from Bing and ESRI.



0 9 18 Miles

