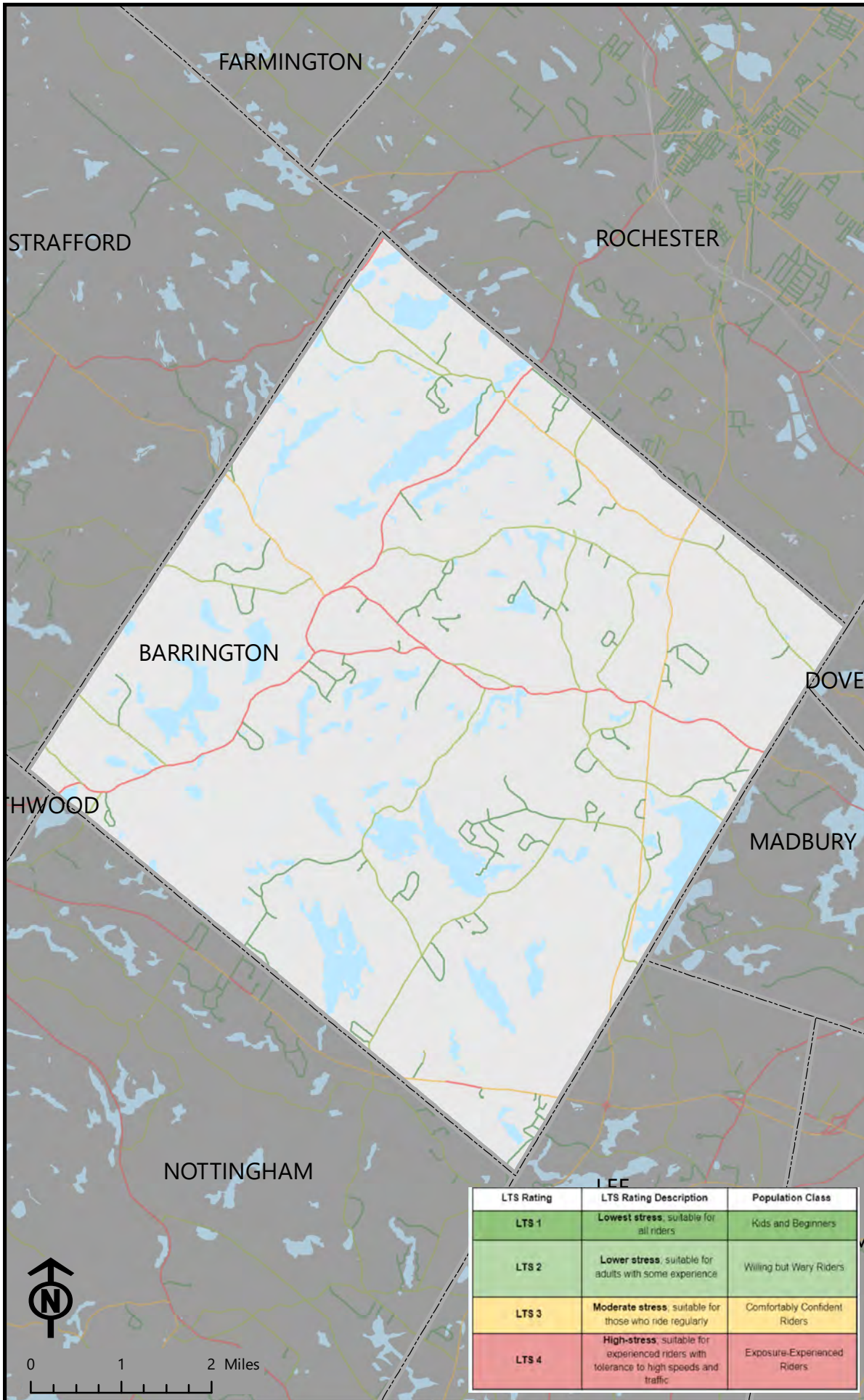


Bicycle Level of Traffic Stress: LTS Score



The level of traffic stress is based on the existing safety features for bicyclists, the daily car volumes, and the speed limit of the road.

A low stress road should be comfortable for most bicyclists. A high stress road may only be suitable for confident or fearless bicyclists.



Legend

LTS Network

- Lowest Stress
- Lower Stress
- Moderate Stress
- High Stress

Base Layers

- Municipalities
- Water
- Roads

LTS Rating	LTS Rating Description	Population Class
LTS 1	Lowest stress, suitable for all riders	Kids and Beginners
LTS 2	Lower stress, suitable for adults with some experience	Willing but Wary Riders
LTS 3	Moderate stress, suitable for those who ride regularly	Comfortably Confident Riders
LTS 4	High-stress, suitable for experienced riders with tolerance to high speeds and traffic	Exposure-Experienced Riders



0 1 2 Miles

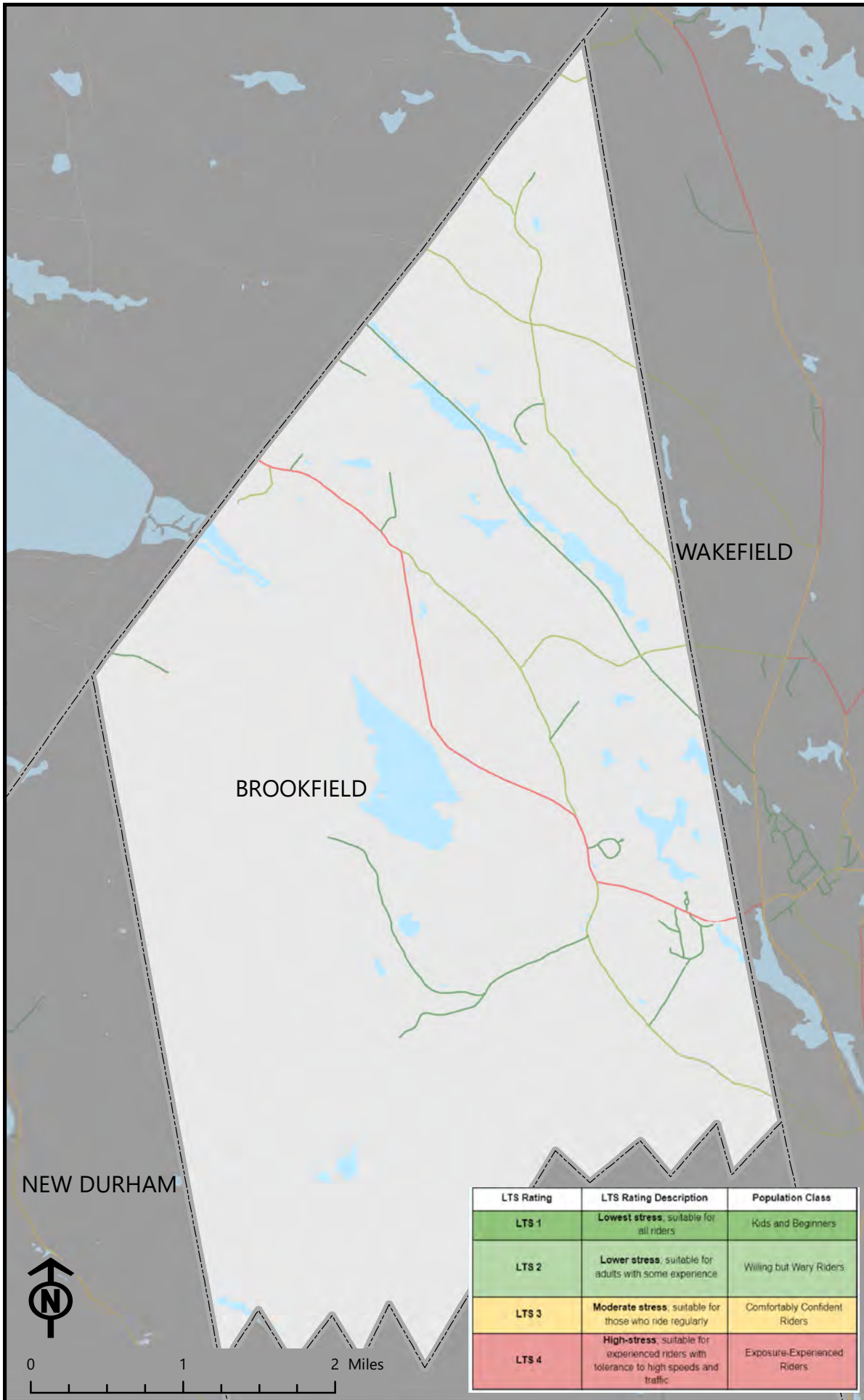


Bicycle Level of Traffic Stress: LTS Score



The level of traffic stress is based on the existing safety features for bicyclists, the daily car volumes, and the speed limit of the road.

A low stress road should be comfortable for most bicyclists. A high stress road may only be suitable for confident or fearless bicyclists.



Legend

LTS Network

- Lowest Stress
- Lower Stress
- Moderate Stress
- High Stress

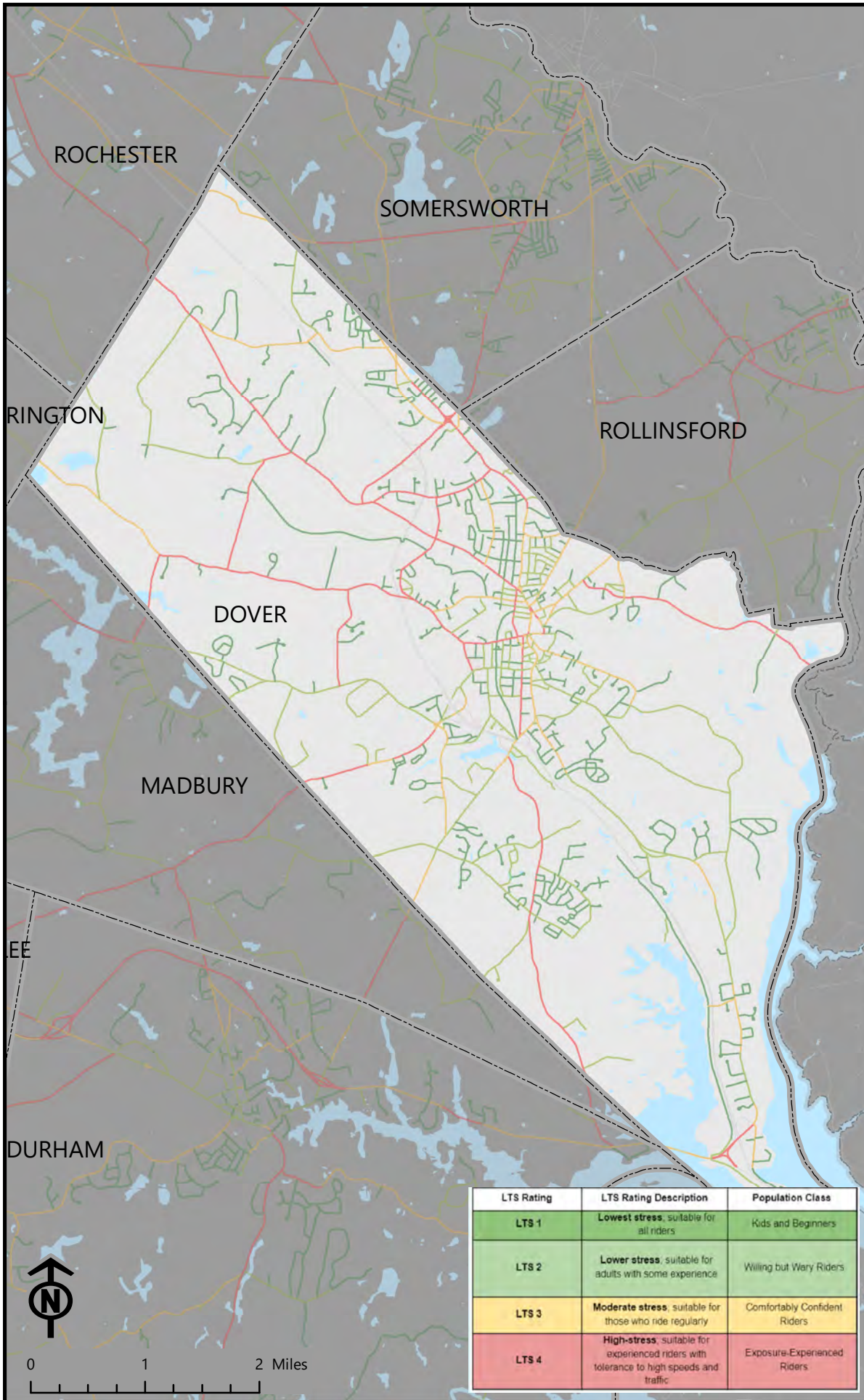
Base Layers

- Municipalities
- Water
- Roads

LTS Rating	LTS Rating Description	Population Class
LTS 1	Lowest stress , suitable for all riders	Kids and Beginners
LTS 2	Lower stress , suitable for adults with some experience	Willing but Wary Riders
LTS 3	Moderate stress , suitable for those who ride regularly	Comfortably Confident Riders
LTS 4	High-stress , suitable for experienced riders with tolerance to high speeds and traffic	Exposure-Experienced Riders



Bicycle Level of Traffic Stress: LTS Score



The level of traffic stress is based on the existing safety features for bicyclists, the daily car volumes, and the speed limit of the road.

A low stress road should be comfortable for most bicyclists. A high stress road may only be suitable for confident or fearless bicyclists.

Legend

LTS Network

- Lowest Stress
- Lower Stress
- Moderate Stress
- High Stress

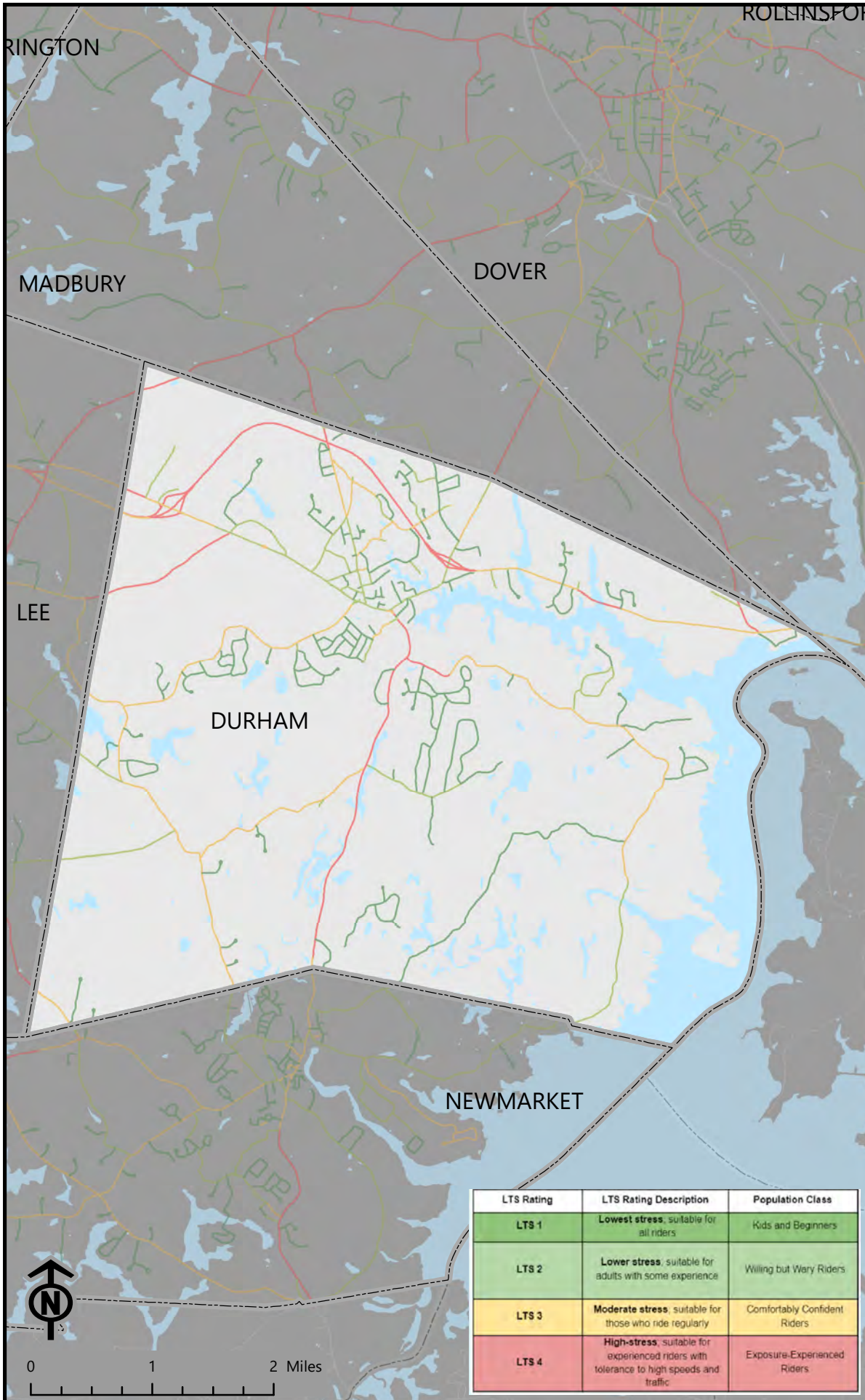
Base Layers

- Municipalities
- Water
- Roads

LTS Rating	LTS Rating Description	Population Class
LTS 1	Lowest stress , suitable for all riders	Kids and Beginners
LTS 2	Lower stress , suitable for adults with some experience	Willing but Wary Riders
LTS 3	Moderate stress , suitable for those who ride regularly	Comfortably Confident Riders
LTS 4	High-stress , suitable for experienced riders with tolerance to high speeds and traffic	Exposure-Experienced Riders



Bicycle Level of Traffic Stress: LTS Score





The level of traffic stress is based on the existing safety features for bicyclists, the daily car volumes, and the speed limit of the road.

A low stress road should be comfortable for most bicyclists. A high stress road may only be suitable for confident or fearless bicyclists.

Legend

LTS Network

-  Lowest Stress
-  Lower Stress
-  Moderate Stress
-  High Stress

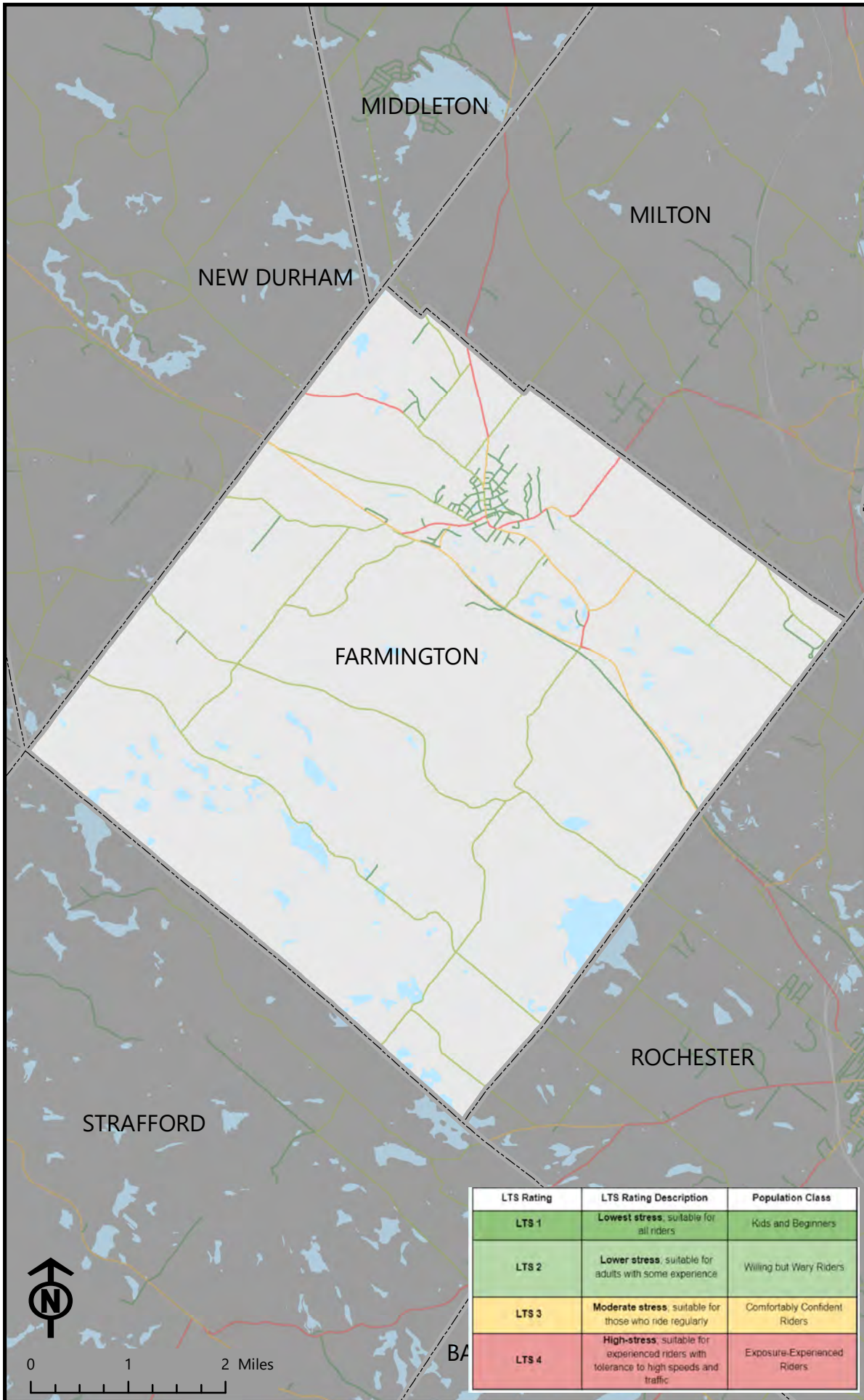
Base Layers

-  Municipalities
-  Water
-  Roads

LTS Rating	LTS Rating Description	Population Class
LTS 1	Lowest stress , suitable for all riders	Kids and Beginners
LTS 2	Lower stress , suitable for adults with some experience	Willing but Wary Riders
LTS 3	Moderate stress , suitable for those who ride regularly	Comfortably Confident Riders
LTS 4	High-stress , suitable for experienced riders with tolerance to high speeds and traffic	Exposure-Experienced Riders



Bicycle Level of Traffic Stress: LTS Score



The level of traffic stress is based on the existing safety features for bicyclists, the daily car volumes, and the speed limit of the road.

A low stress road should be comfortable for most bicyclists. A high stress road may only be suitable for confident or fearless bicyclists.

Legend

LTS Network

- Lowest Stress
- Lower Stress
- Moderate Stress
- High Stress

Base Layers

- Municipalities
- Water
- Roads

LTS Rating	LTS Rating Description	Population Class
LTS 1	Lowest stress , suitable for all riders	Kids and Beginners
LTS 2	Lower stress , suitable for adults with some experience	Willing but Wary Riders
LTS 3	Moderate stress , suitable for those who ride regularly	Comfortably Confident Riders
LTS 4	High-stress , suitable for experienced riders with tolerance to high speeds and traffic	Exposure-Experienced Riders

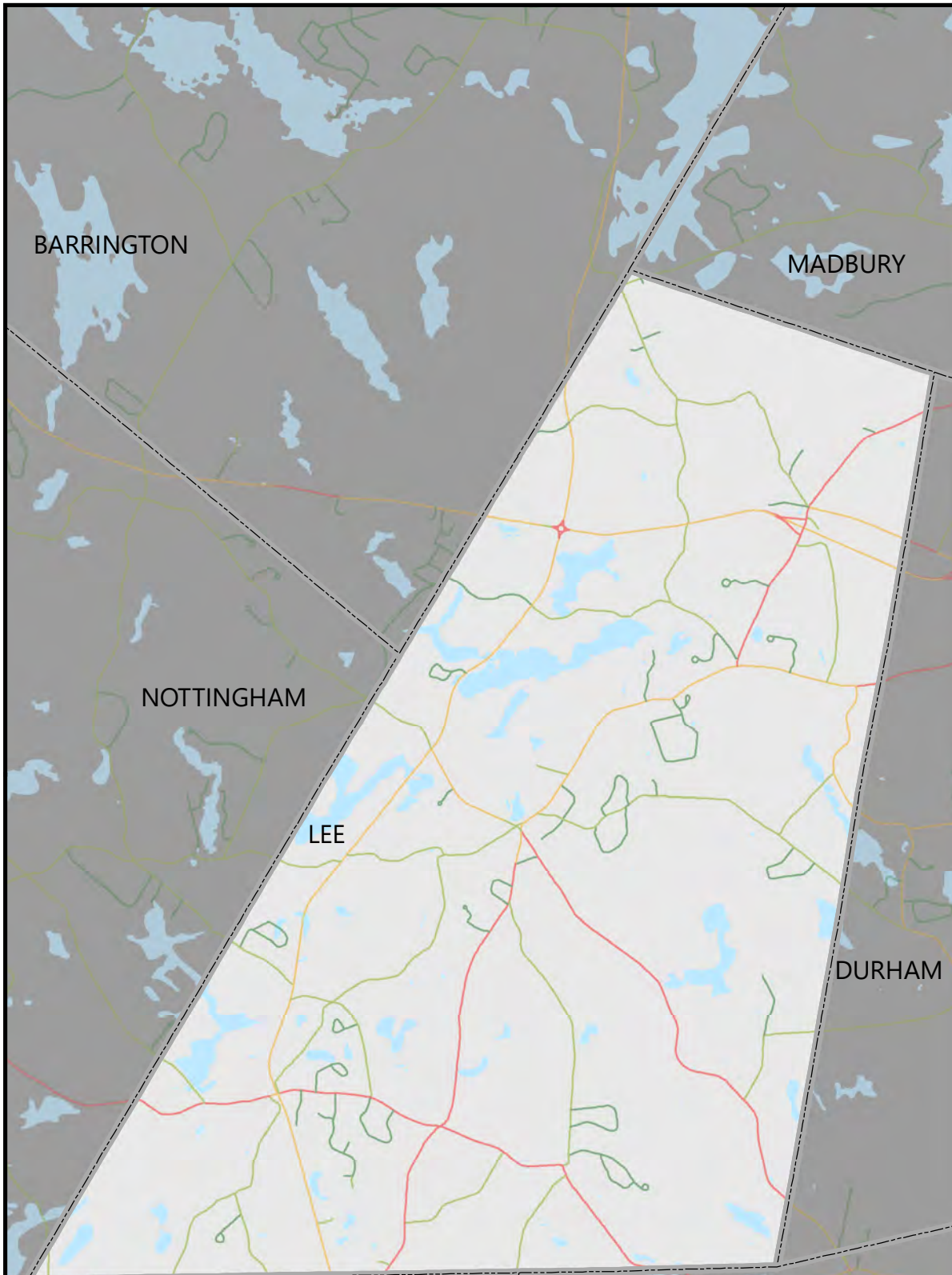


Bicycle Level of Traffic Stress: LTS Score



The level of traffic stress is based on the existing safety features for bicyclists, the daily car volumes, and the speed limit of the road.

A low stress road should be comfortable for most bicyclists. A high stress road may only be suitable for confident or fearless bicyclists.



Legend

LTS Network

- Lowest Stress
- Lower Stress
- Moderate Stress
- High Stress

Base Layers

- Municipalities
- Water
- Roads

LTS Rating	LTS Rating Description	Population Class
LTS 1	Lowest stress , suitable for all riders	Kids and Beginners
LTS 2	Lower stress , suitable for adults with some experience	Willing but Wary Riders
LTS 3	Moderate stress , suitable for those who ride regularly	Comfortably Confident Riders
LTS 4	High-stress , suitable for experienced riders with tolerance to high speeds and traffic	Exposure-Experienced Riders



0 1 2 Miles

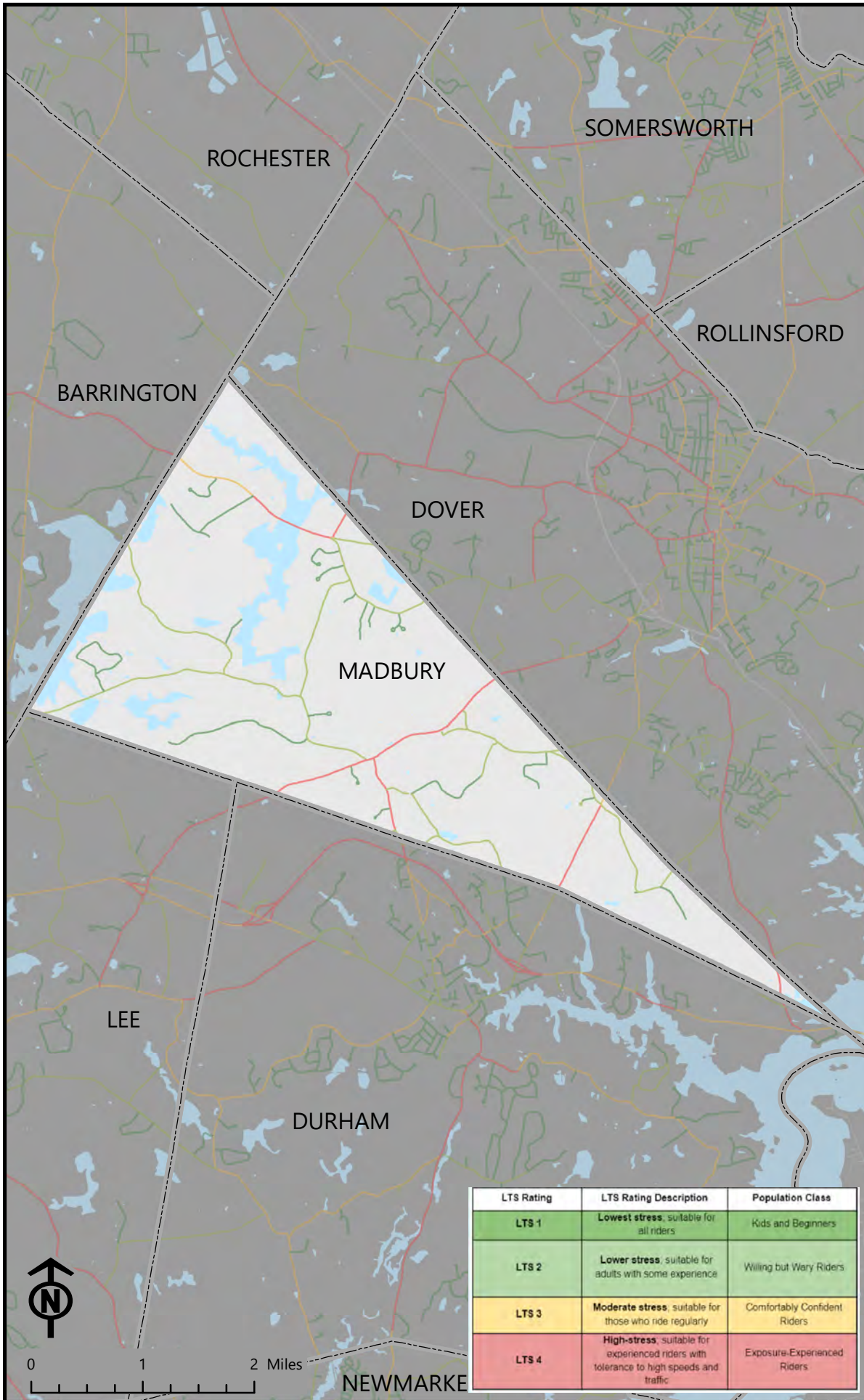


Bicycle Level of Traffic Stress: LTS Score



The level of traffic stress is based on the existing safety features for bicyclists, the daily car volumes, and the speed limit of the road.

A low stress road should be comfortable for most bicyclists. A high stress road may only be suitable for confident or fearless bicyclists.



Legend

LTS Network

- Lowest Stress
- Lower Stress
- Moderate Stress
- High Stress

Base Layers

- Municipalities
- Water
- Roads

LTS Rating	LTS Rating Description	Population Class
LTS 1	Lowest stress, suitable for all riders	Kids and Beginners
LTS 2	Lower stress, suitable for adults with some experience	Willing but Wary Riders
LTS 3	Moderate stress, suitable for those who ride regularly	Comfortably Confident Riders
LTS 4	High-stress, suitable for experienced riders with tolerance to high speeds and traffic	Exposure-Experienced Riders

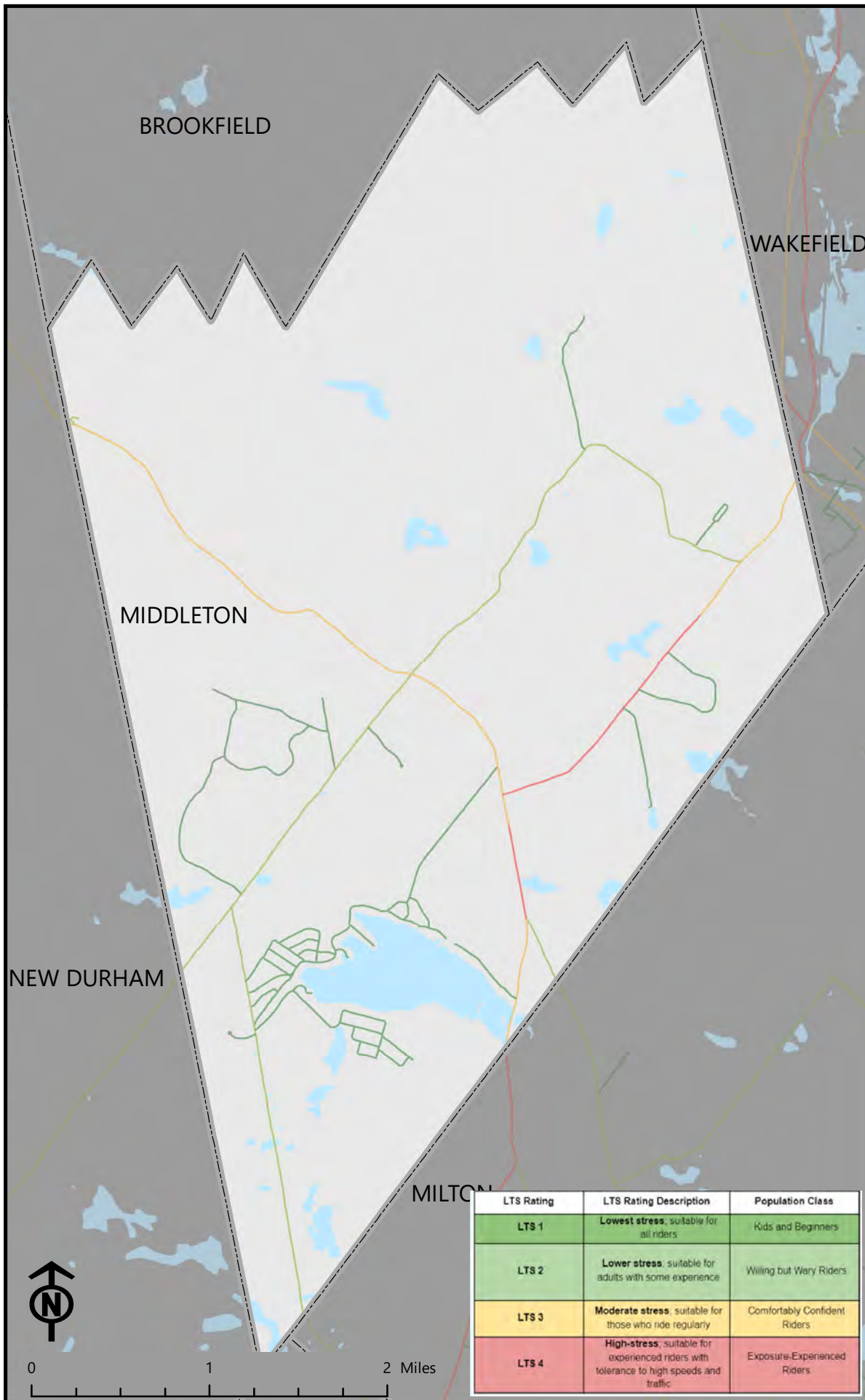


Bicycle Level of Traffic Stress: LTS Score






The level of traffic stress is based on the existing safety features for bicyclists, the daily car volumes, and the speed limit of the road.

A low stress road should be comfortable for most bicyclists. A high stress road may only be suitable for confident or fearless bicyclists.



Legend

LTS Network

-  Lowest Stress
-  Lower Stress
-  Moderate Stress
-  High Stress

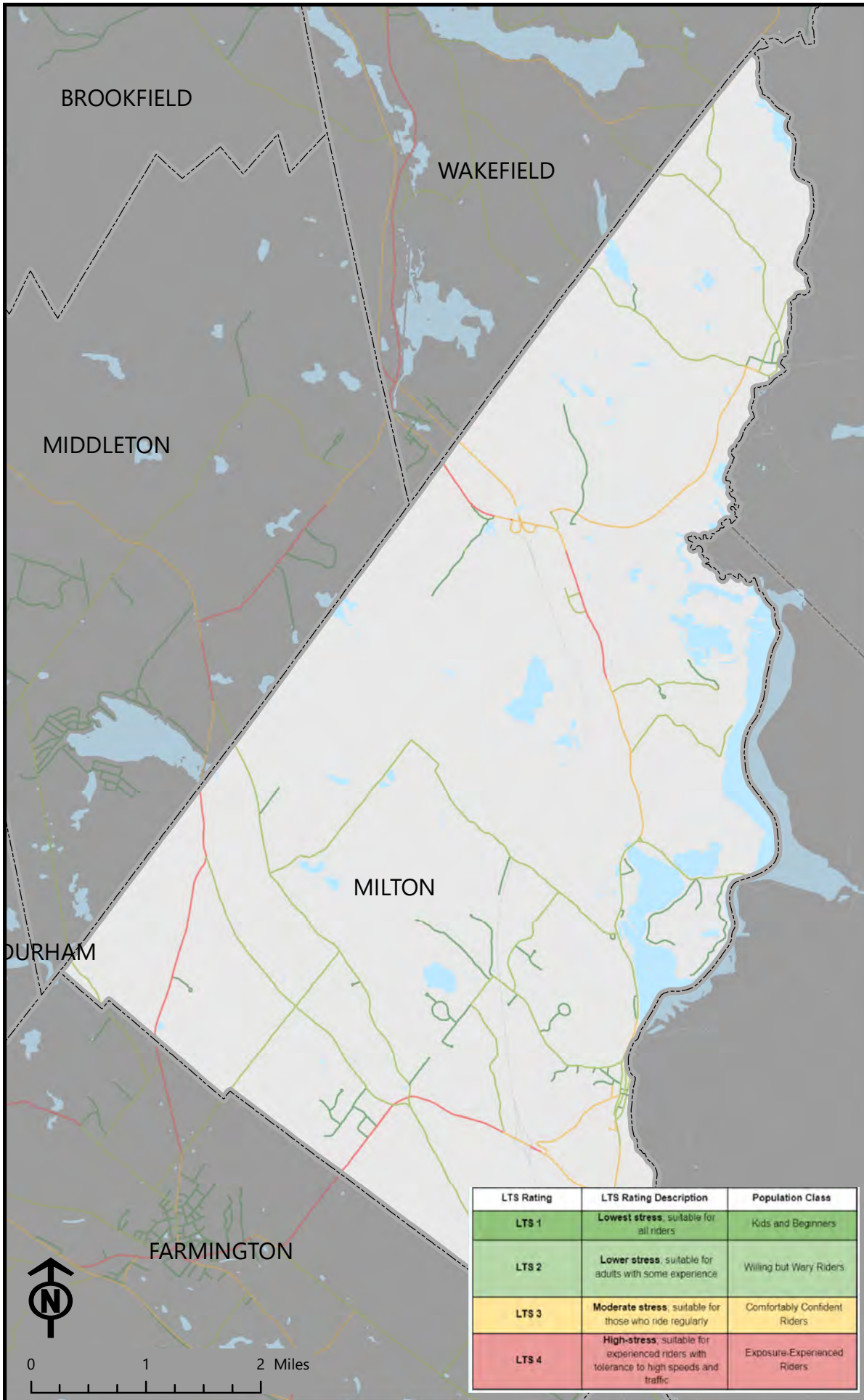
Base Layers

-  Municipalities
-  Water
-  Roads

LTS Rating	LTS Rating Description	Population Class
LTS 1	Lowest stress , suitable for all riders	Kids and Beginners
LTS 2	Lower stress , suitable for adults with some experience	Willing but Wary Riders
LTS 3	Moderate stress , suitable for those who ride regularly	Comfortably Confident Riders
LTS 4	High-stress , suitable for experienced riders with tolerance to high speeds and traffic	Exposure-Experienced Riders



Bicycle Level of Traffic Stress: LTS Score



The level of traffic stress is based on the existing safety features for bicyclists, the daily car volumes, and the speed limit of the road.

A low stress road should be comfortable for most bicyclists. A high stress road may only be suitable for confident or fearless bicyclists.

Legend

LTS Network

- Lowest Stress
- Lower Stress
- Moderate Stress
- High Stress

Base Layers

- Municipalities
- Water
- Roads

LTS Rating	LTS Rating Description	Population Class
LTS 1	Lowest stress , suitable for all riders	Kids and Beginners
LTS 2	Lower stress , suitable for adults with some experience	Willing but Wary Riders
LTS 3	Moderate stress , suitable for those who ride regularly	Comfortably Confident Riders
LTS 4	High-stress , suitable for experienced riders with tolerance to high speeds and traffic	Exposure-Experienced Riders

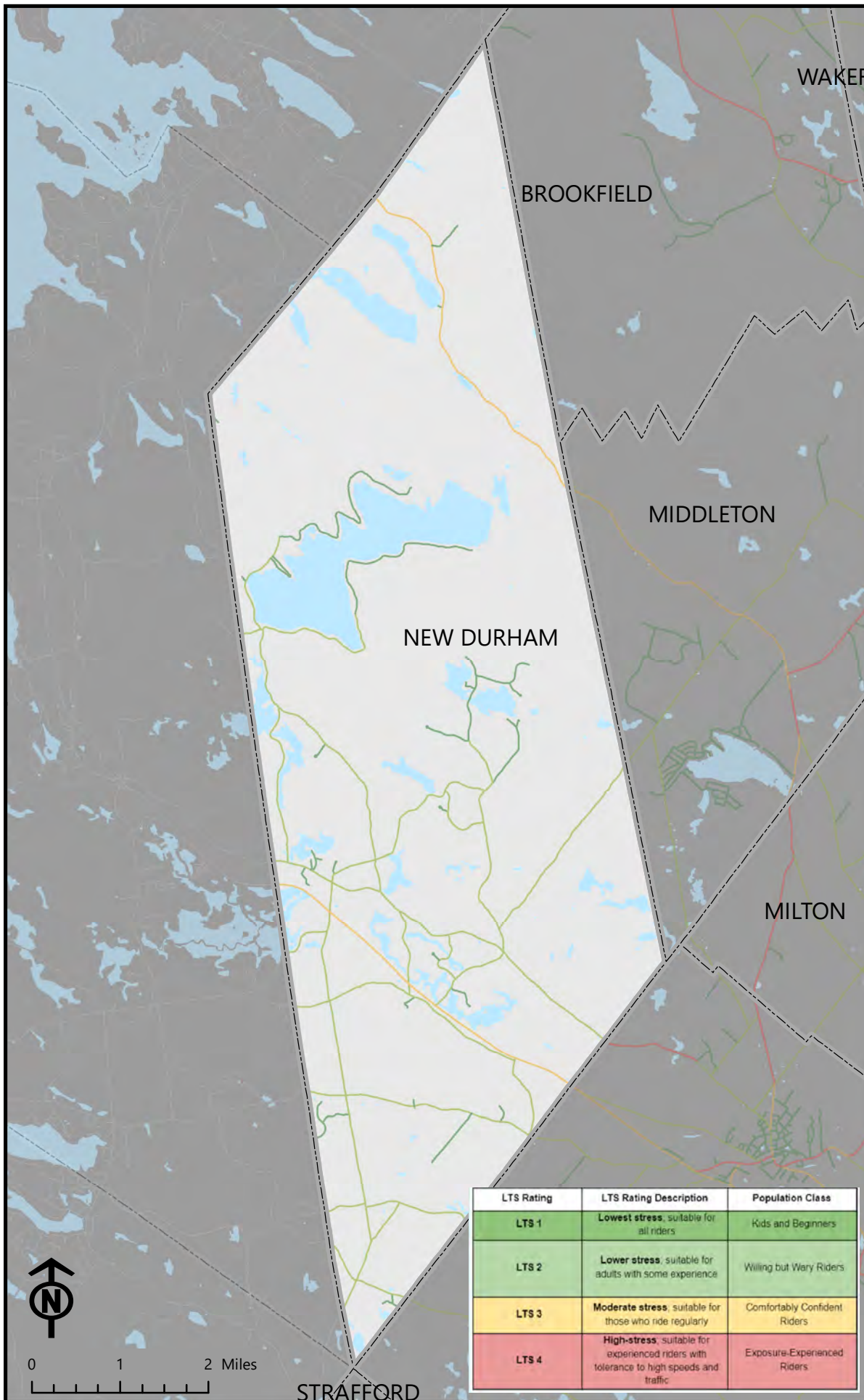


Bicycle Level of Traffic Stress: LTS Score



The level of traffic stress is based on the existing safety features for bicyclists, the daily car volumes, and the speed limit of the road.

A low stress road should be comfortable for most bicyclists. A high stress road may only be suitable for confident or fearless bicyclists.



Legend

LTS Network

- Lowest Stress
- Lower Stress
- Moderate Stress
- High Stress

Base Layers

- Municipalities
- Water
- Roads

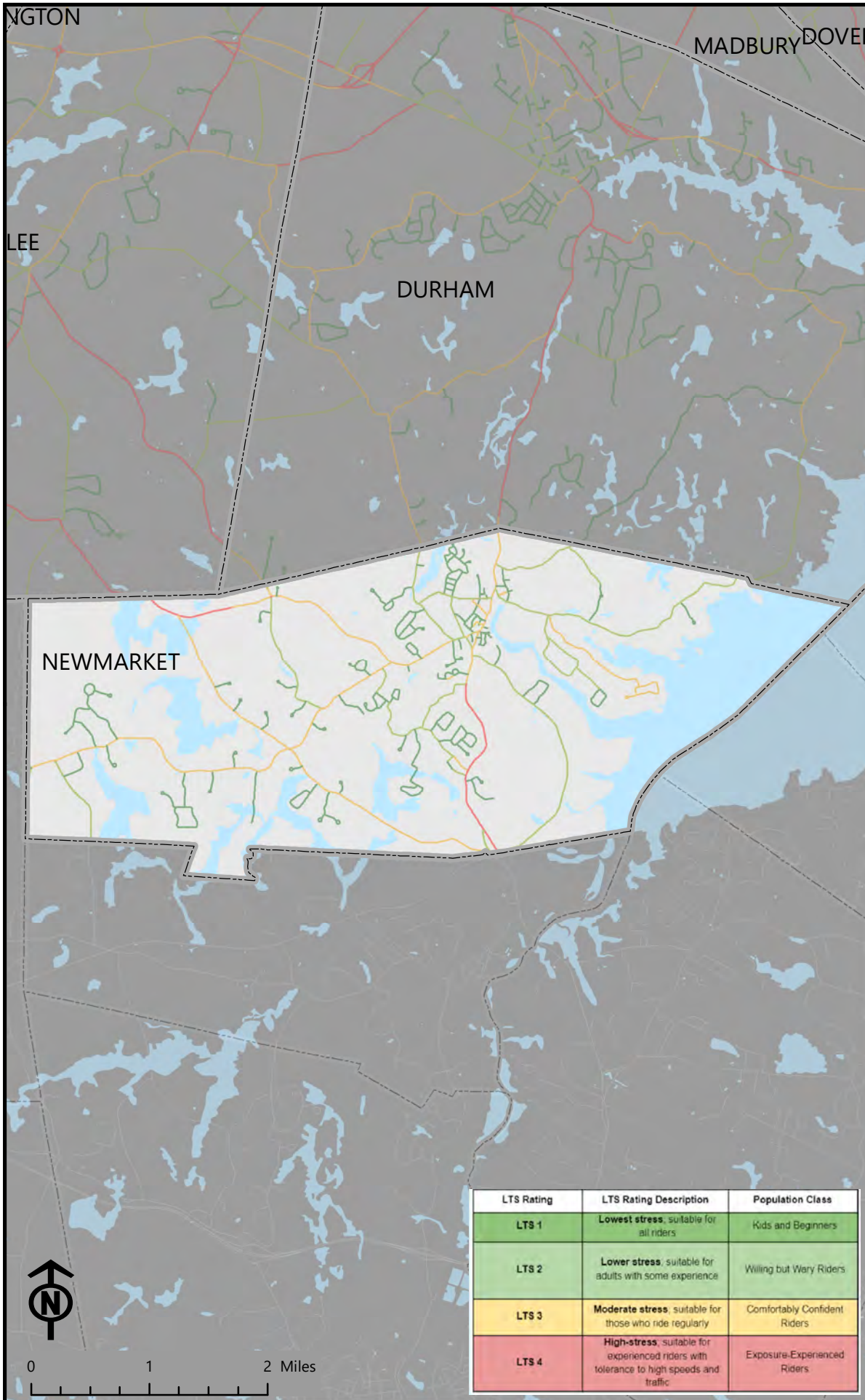
LTS Rating	LTS Rating Description	Population Class
LTS 1	Lowest stress, suitable for all riders	Kids and Beginners
LTS 2	Lower stress, suitable for adults with some experience	Willing but Wary Riders
LTS 3	Moderate stress, suitable for those who ride regularly	Comfortably Confident Riders
LTS 4	High-stress, suitable for experienced riders with tolerance to high speeds and traffic	Exposure-Experienced Riders



0 1 2 Miles



Bicycle Level of Traffic Stress: LTS Score







The level of traffic stress is based on the existing safety features for bicyclists, the daily car volumes, and the speed limit of the road.

A low stress road should be comfortable for most bicyclists. A high stress road may only be suitable for confident or fearless bicyclists.

Legend

LTS Network

-  Lowest Stress
-  Lower Stress
-  Moderate Stress
-  High Stress

Base Layers

-  Municipalities
-  Water
-  Roads

LTS Rating	LTS Rating Description	Population Class
LTS 1	Lowest stress, suitable for all riders	Kids and Beginners
LTS 2	Lower stress, suitable for adults with some experience	Willing but Wary Riders
LTS 3	Moderate stress, suitable for those who ride regularly	Comfortably Confident Riders
LTS 4	High-stress, suitable for experienced riders with tolerance to high speeds and traffic	Exposure-Experienced Riders

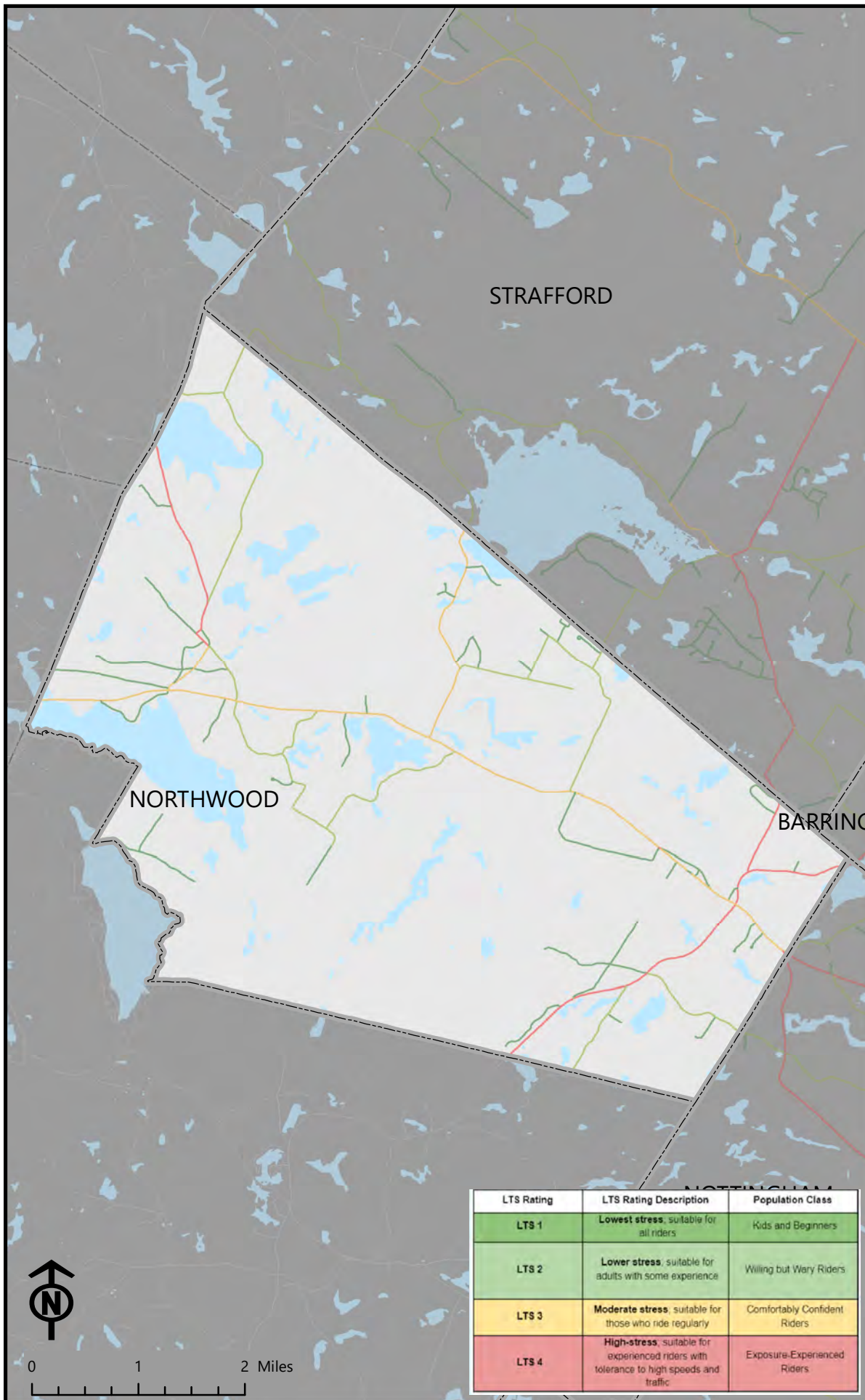


Bicycle Level of Traffic Stress: LTS Score



The level of traffic stress is based on the existing safety features for bicyclists, the daily car volumes, and the speed limit of the road.

A low stress road should be comfortable for most bicyclists. A high stress road may only be suitable for confident or fearless bicyclists.



Legend

LTS Network

- Lowest Stress
- Lower Stress
- Moderate Stress
- High Stress

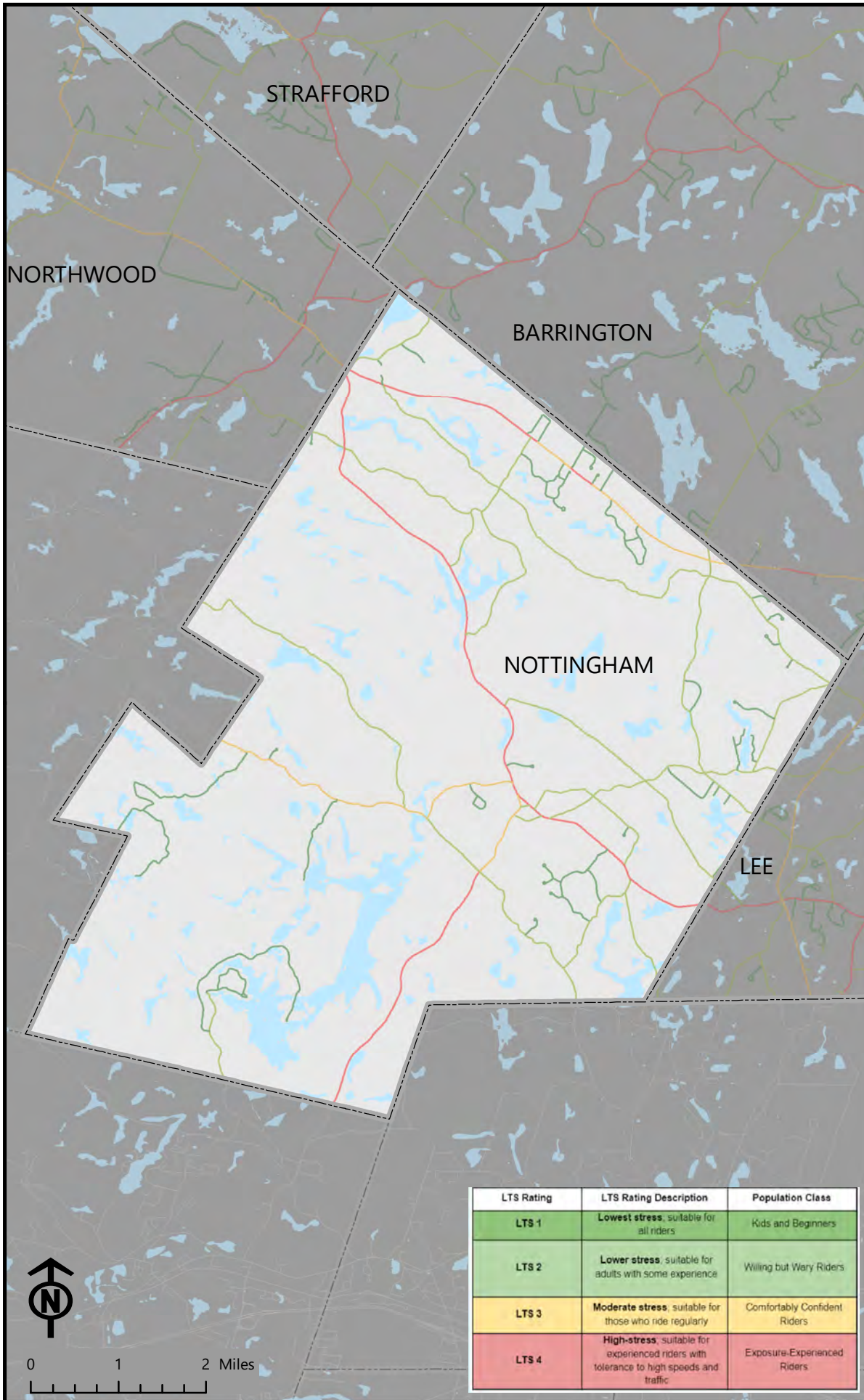
Base Layers

- Municipalities
- Water
- Roads

LTS Rating	LTS Rating Description	Population Class
LTS 1	Lowest stress , suitable for all riders	Kids and Beginners
LTS 2	Lower stress , suitable for adults with some experience	Willing but Wary Riders
LTS 3	Moderate stress , suitable for those who ride regularly	Comfortably Confident Riders
LTS 4	High-stress , suitable for experienced riders with tolerance to high speeds and traffic	Exposure-Experienced Riders



Bicycle Level of Traffic Stress: LTS Score



The level of traffic stress is based on the existing safety features for bicyclists, the daily car volumes, and the speed limit of the road.

A low stress road should be comfortable for most bicyclists. A high stress road may only be suitable for confident or fearless bicyclists.

Legend

LTS Network

- Lowest Stress
- Lower Stress
- Moderate Stress
- High Stress

Base Layers

- Municipalities
- Water
- Roads

LTS Rating	LTS Rating Description	Population Class
LTS 1	Lowest stress , suitable for all riders	Kids and Beginners
LTS 2	Lower stress , suitable for adults with some experience	Willing but Wary Riders
LTS 3	Moderate stress , suitable for those who ride regularly	Comfortably Confident Riders
LTS 4	High-stress , suitable for experienced riders with tolerance to high speeds and traffic	Exposure-Experienced Riders

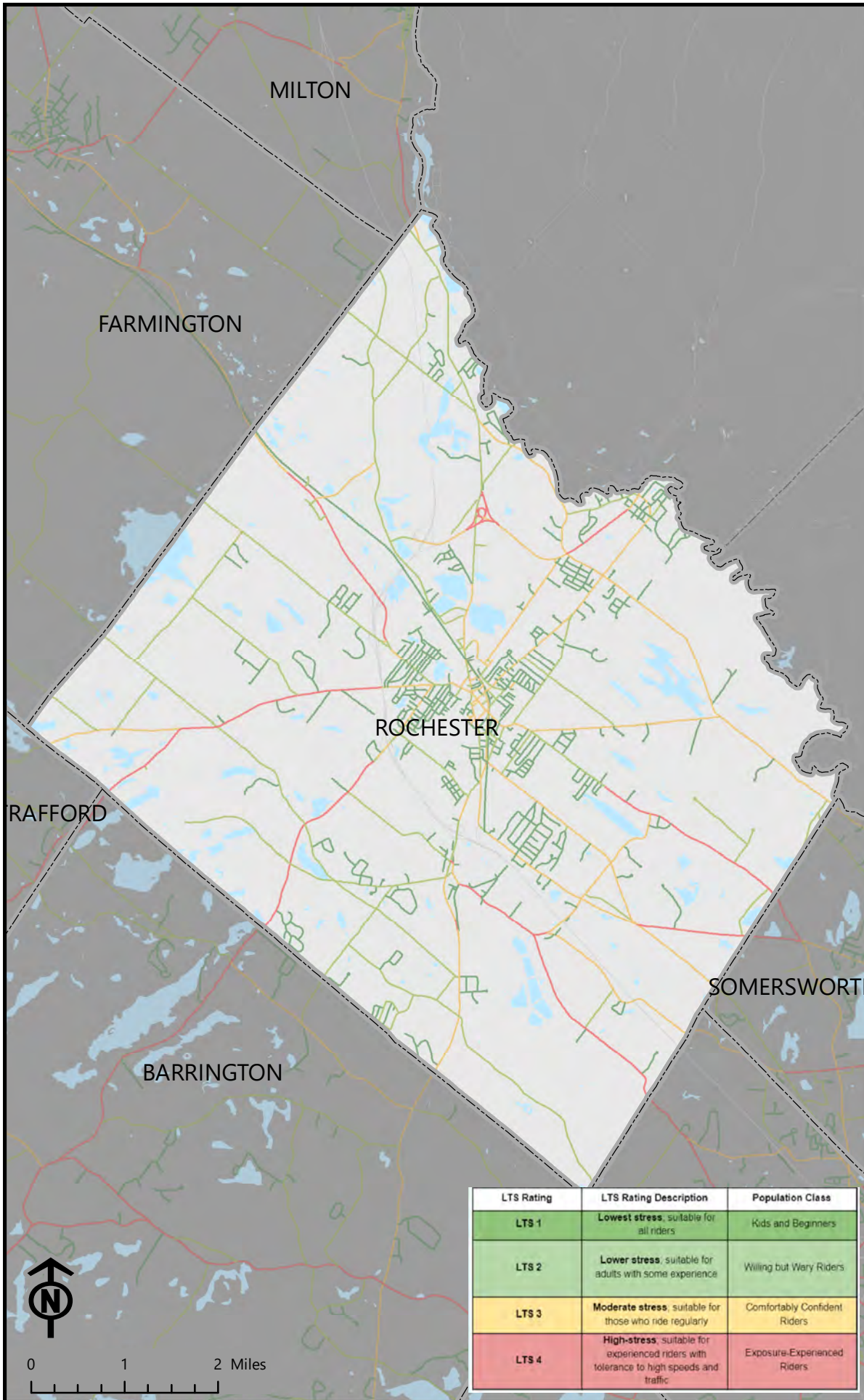


Bicycle Level of Traffic Stress: LTS Score



The level of traffic stress is based on the existing safety features for bicyclists, the daily car volumes, and the speed limit of the road.

A low stress road should be comfortable for most bicyclists. A high stress road may only be suitable for confident or fearless bicyclists.



Legend

LTS Network

- Lowest Stress
- Lower Stress
- Moderate Stress
- High Stress

Base Layers

- Municipalities
- Water
- Roads

LTS Rating	LTS Rating Description	Population Class
LTS 1	Lowest stress , suitable for all riders	Kids and Beginners
LTS 2	Lower stress , suitable for adults with some experience	Willing but Wary Riders
LTS 3	Moderate stress , suitable for those who ride regularly	Comfortably Confident Riders
LTS 4	High-stress , suitable for experienced riders with tolerance to high speeds and traffic	Exposure-Experienced Riders



Bicycle Level of Traffic Stress: LTS Score



The level of traffic stress is based on the existing safety features for bicyclists, the daily car volumes, and the speed limit of the road.

A low stress road should be comfortable for most bicyclists. A high stress road may only be suitable for confident or fearless bicyclists.



Legend

LTS Network

- Lowest Stress
- Lower Stress
- Moderate Stress
- High Stress

Base Layers

- Municipalities
- Water
- Roads

LTS Rating	LTS Rating Description	Population Class
LTS 1	Lowest stress, suitable for all riders	Kids and Beginners
LTS 2	Lower stress, suitable for adults with some experience	Willing but Wary Riders
LTS 3	Moderate stress, suitable for those who ride regularly	Comfortably Confident Riders
LTS 4	High-stress, suitable for experienced riders with tolerance to high speeds and traffic	Exposure-Experienced Riders



0 1 2 Miles

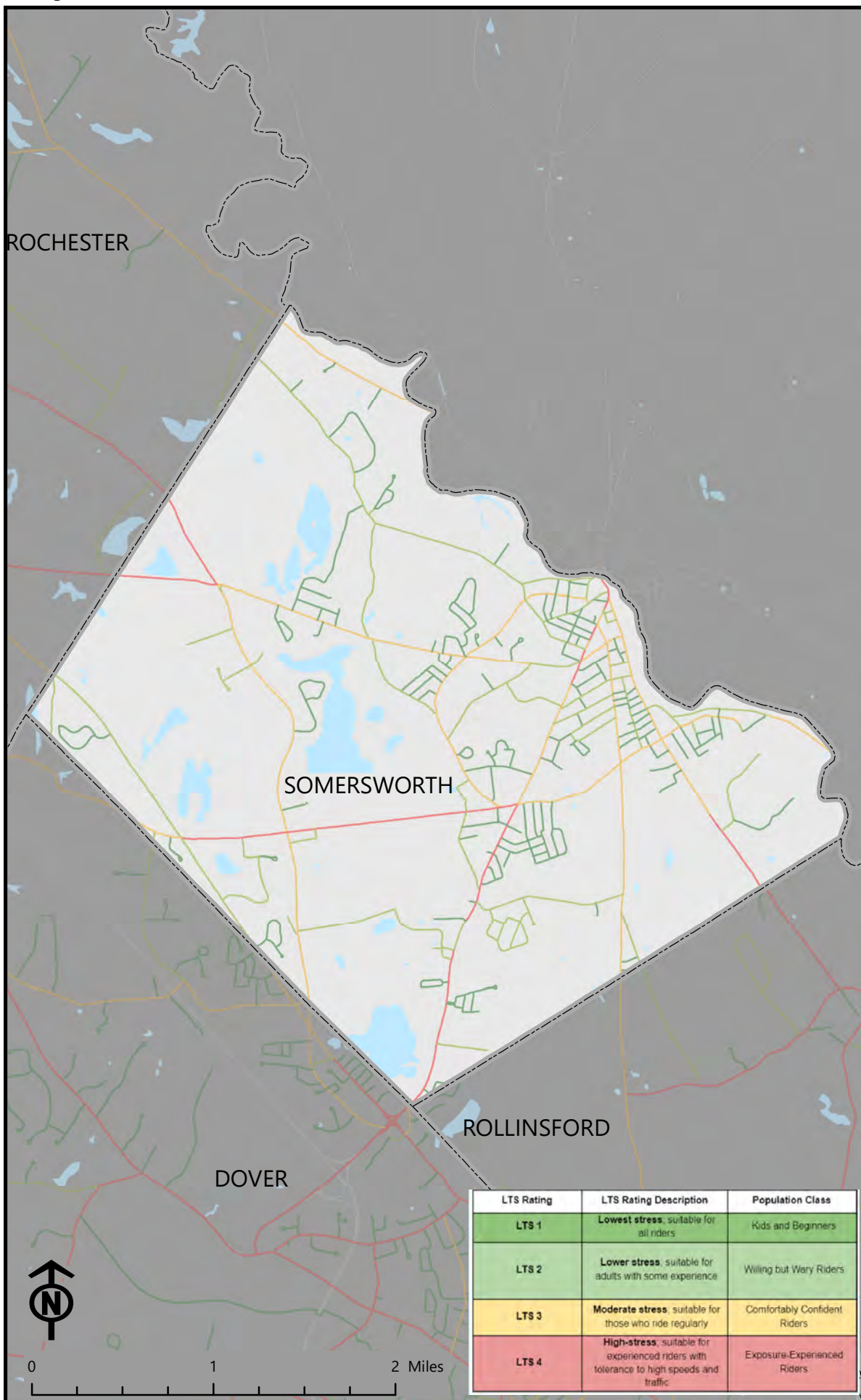


Bicycle Level of Traffic Stress: LTS Score



The level of traffic stress is based on the existing safety features for bicyclists, the daily car volumes, and the speed limit of the road.

A low stress road should be comfortable for most bicyclists. A high stress road may only be suitable for confident or fearless bicyclists.



Legend

LTS Network

- Lowest Stress
- Lower Stress
- Moderate Stress
- High Stress

Base Layers

- Municipalities
- Water
- Roads

LTS Rating	LTS Rating Description	Population Class
LTS 1	Lowest stress , suitable for all riders	Kids and Beginners
LTS 2	Lower stress , suitable for adults with some experience	Willing but Wary Riders
LTS 3	Moderate stress , suitable for those who ride regularly	Comfortably Confident Riders
LTS 4	High-stress , suitable for experienced riders with tolerance to high speeds and traffic	Exposure-Experienced Riders

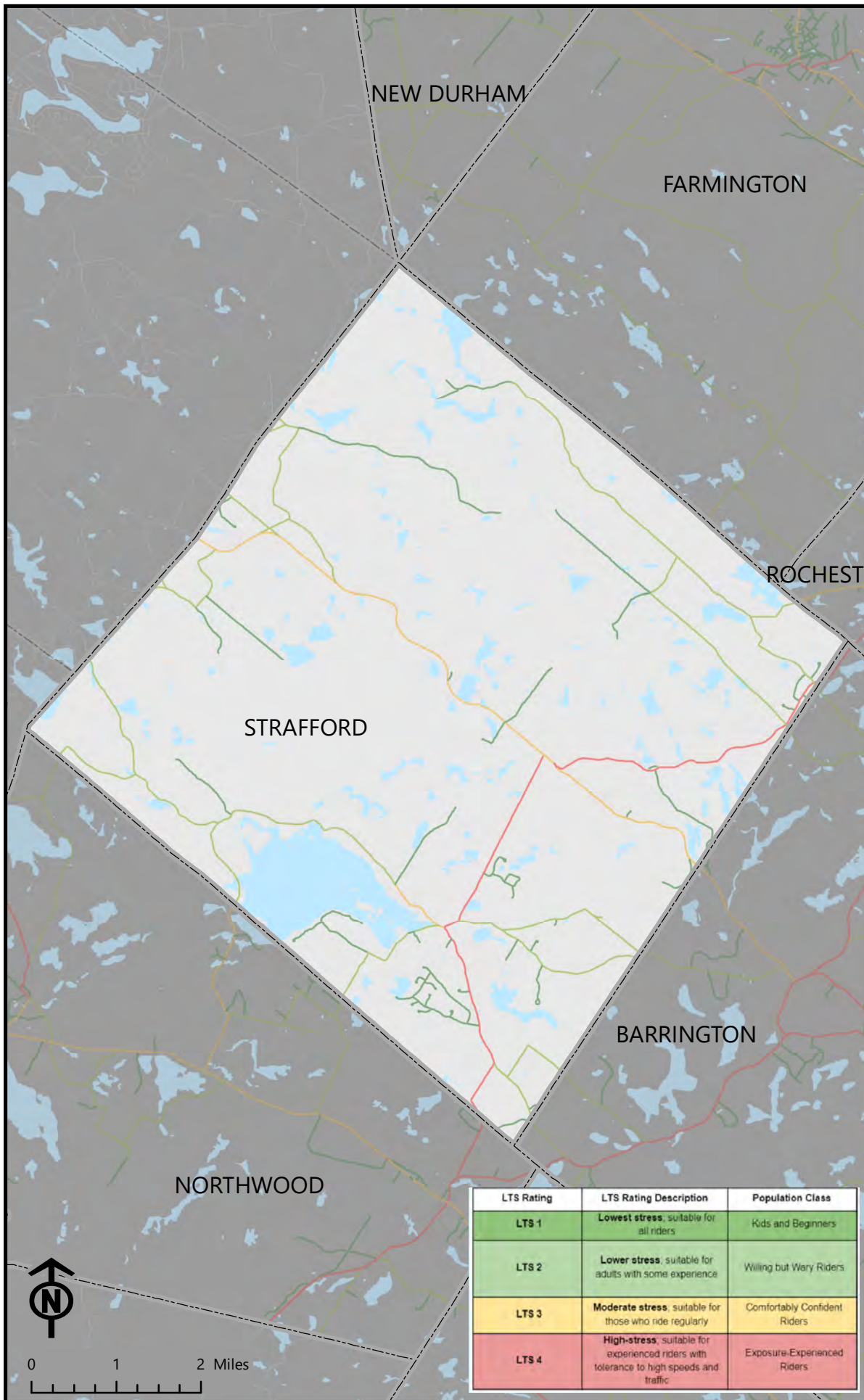


Bicycle Level of Traffic Stress: LTS Score



The level of traffic stress is based on the existing safety features for bicyclists, the daily car volumes, and the speed limit of the road.

A low stress road should be comfortable for most bicyclists. A high stress road may only be suitable for confident or fearless bicyclists.






Legend

LTS Network

-  Lowest Stress
-  Lower Stress
-  Moderate Stress
-  High Stress

Base Layers

-  Municipalities
-  Water
-  Roads

LTS Rating	LTS Rating Description	Population Class
LTS 1	Lowest stress, suitable for all riders	Kids and Beginners
LTS 2	Lower stress, suitable for adults with some experience	Willing but Wary Riders
LTS 3	Moderate stress, suitable for those who ride regularly	Comfortably Confident Riders
LTS 4	High-stress, suitable for experienced riders with tolerance to high speeds and traffic	Exposure-Experienced Riders



Bicycle Level of Traffic Stress: LTS Score



The level of traffic stress is based on the existing safety features for bicyclists, the daily car volumes, and the speed limit of the road.

A low stress road should be comfortable for most bicyclists. A high stress road may only be suitable for confident or fearless bicyclists.



Legend

LTS Network

- Lowest Stress
- Lower Stress
- Moderate Stress
- High Stress

Base Layers

- Municipalities
- Water
- Roads

LTS Rating	LTS Rating Description	Population Class
LTS 1	Lowest stress, suitable for all riders	Kids and Beginners
LTS 2	Lower stress, suitable for adults with some experience	Willing but Wary Riders
LTS 3	Moderate stress, suitable for those who ride regularly	Comfortably Confident Riders
LTS 4	High-stress, suitable for experienced riders with tolerance to high speeds and traffic	Exposure-Experienced Riders

