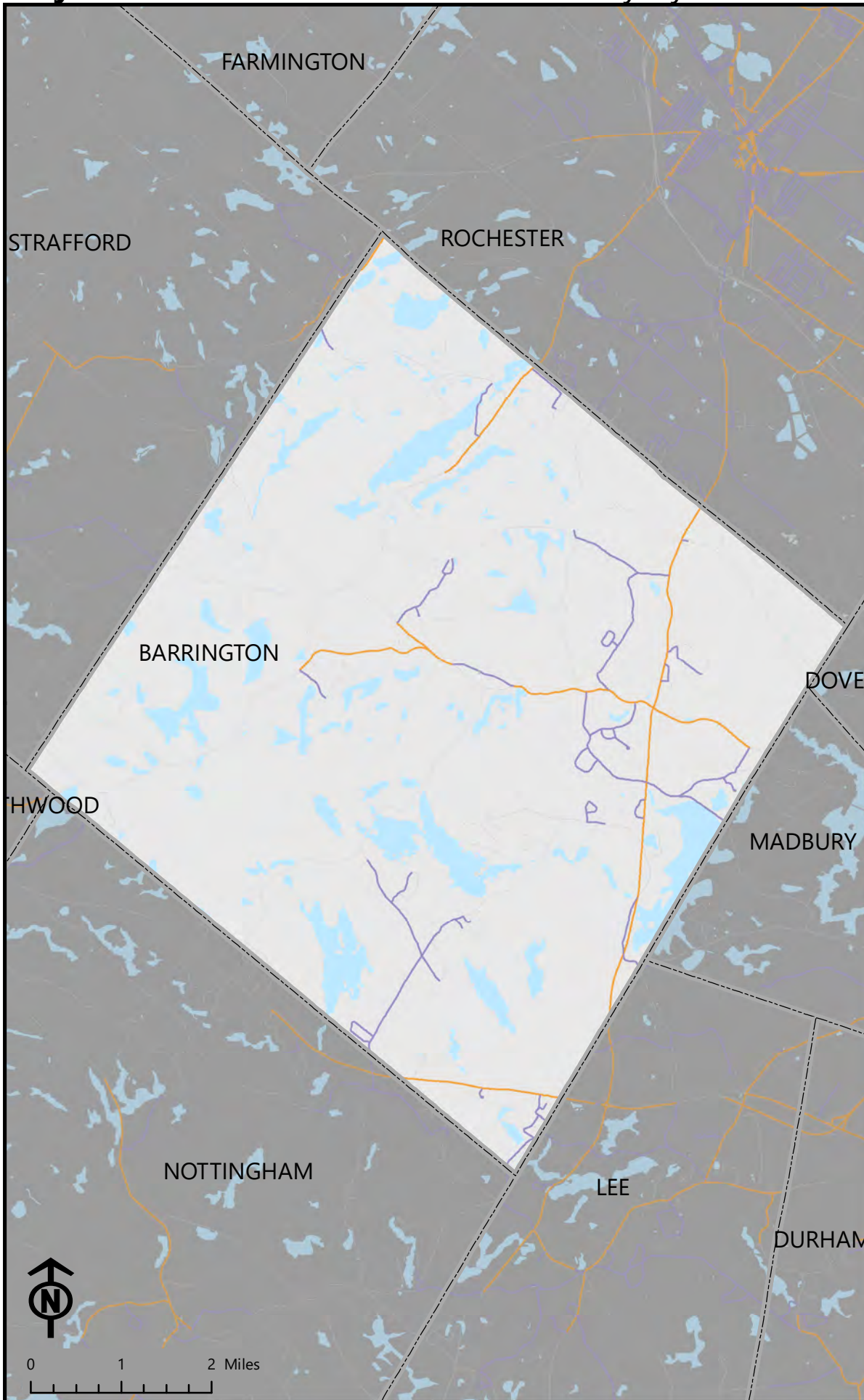


Bicycle Level of Traffic Stress: Centrality by Stress Level



The centrality of a road is the number of neighborhoods that can reach a school, town hall, or large employer using that road.

Low Stress roads are suitable for the majority of bicyclists. High Stress roads are only suitable for confident or fearless bicyclists.



Legend

Centrality

- 1 - 100
- 101 - 250
- 251 - 500
- 501 - 1000
- 1000+

Stress Level

- Low Stress (1 + 2)
- High Stress (3 + 4)

Base Layers

- Municipalities
- Water
- Roads



0 1 2 Miles

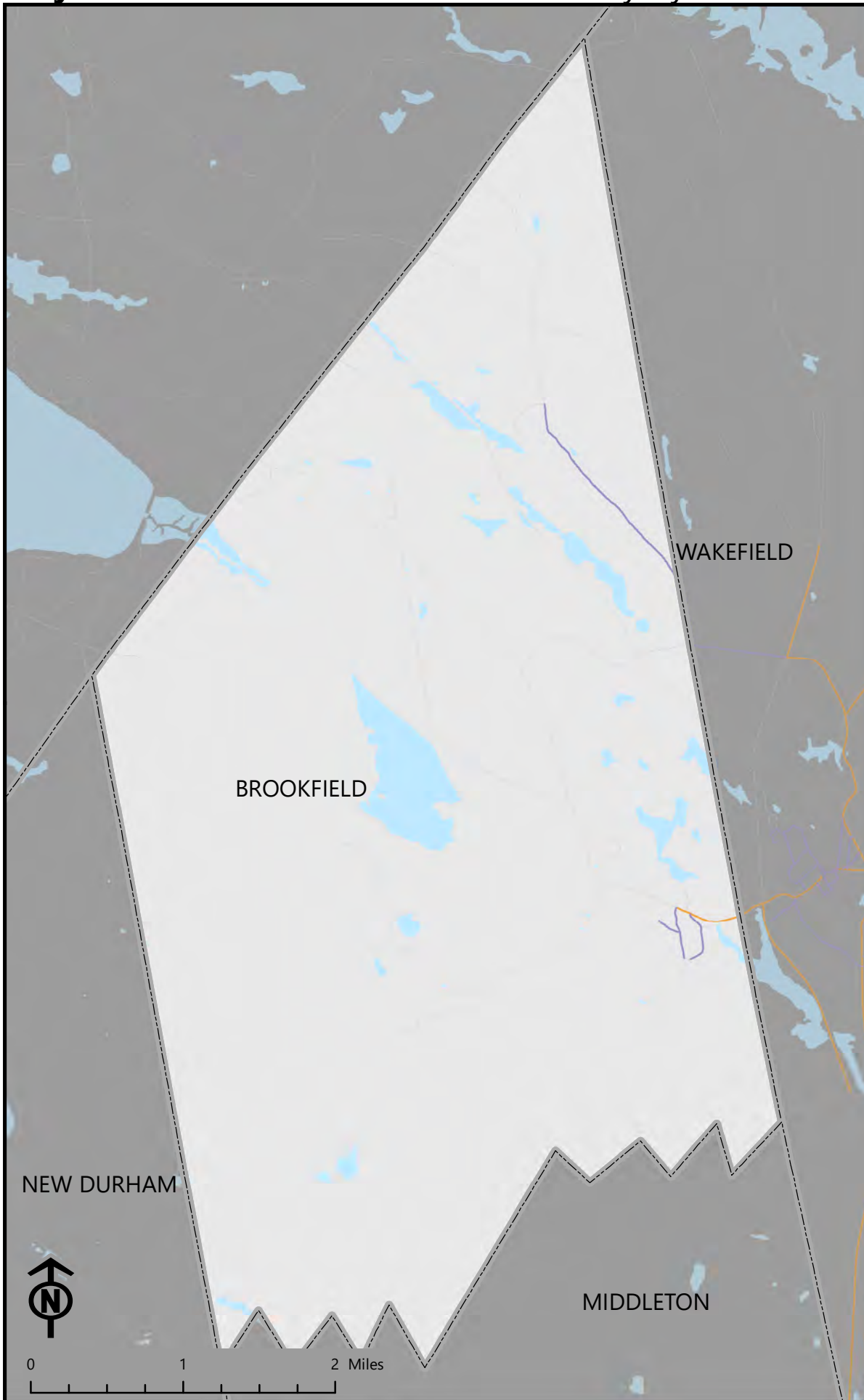


Bicycle Level of Traffic Stress: Centrality by Stress Level



The centrality of a road is the number of neighborhoods that can reach a school, town hall, or large employer using that road.

Low Stress roads are suitable for the majority of bicyclists. High Stress roads are only suitable for confident or fearless bicyclists.



Legend

Centrality

- 1 - 100
- 101 - 250
- 251 - 500
- 501 - 1000
- 1000+

Stress Level

- Low Stress (1 + 2)
- High Stress (3 + 4)

Base Layers

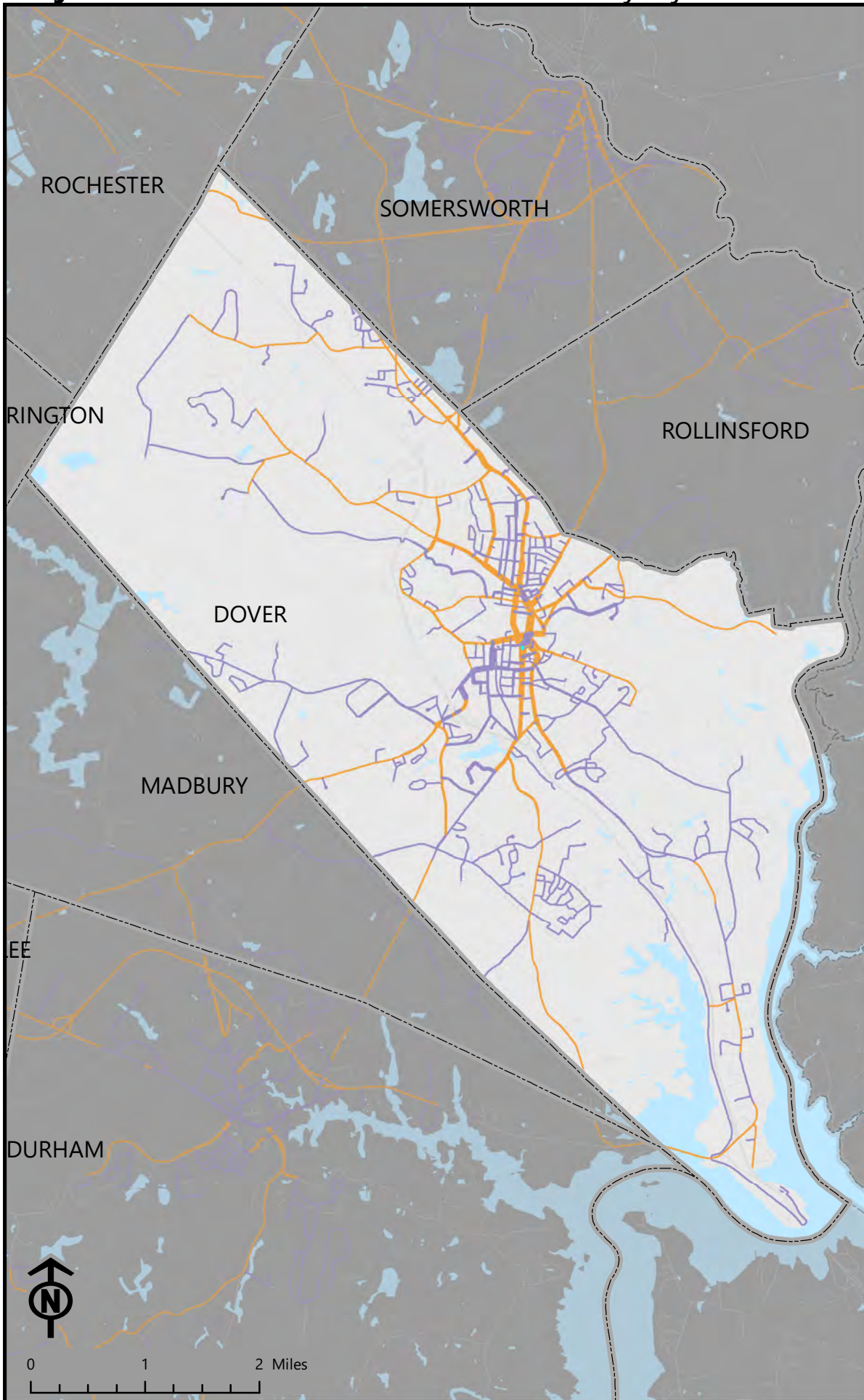
- Municipalities
- Water
- Roads



0 1 2 Miles



Bicycle Level of Traffic Stress: Centrality by Stress Level



The centrality of a road is the number of neighborhoods that can reach a school, town hall, or large employer using that road.

Low Stress roads are suitable for the majority of bicyclists. High Stress roads are only suitable for confident or fearless bicyclists.

Legend

Centrality

- 1 - 100
- 101 - 250
- 251 - 500
- 501 - 1000
- 1000+

Stress Level

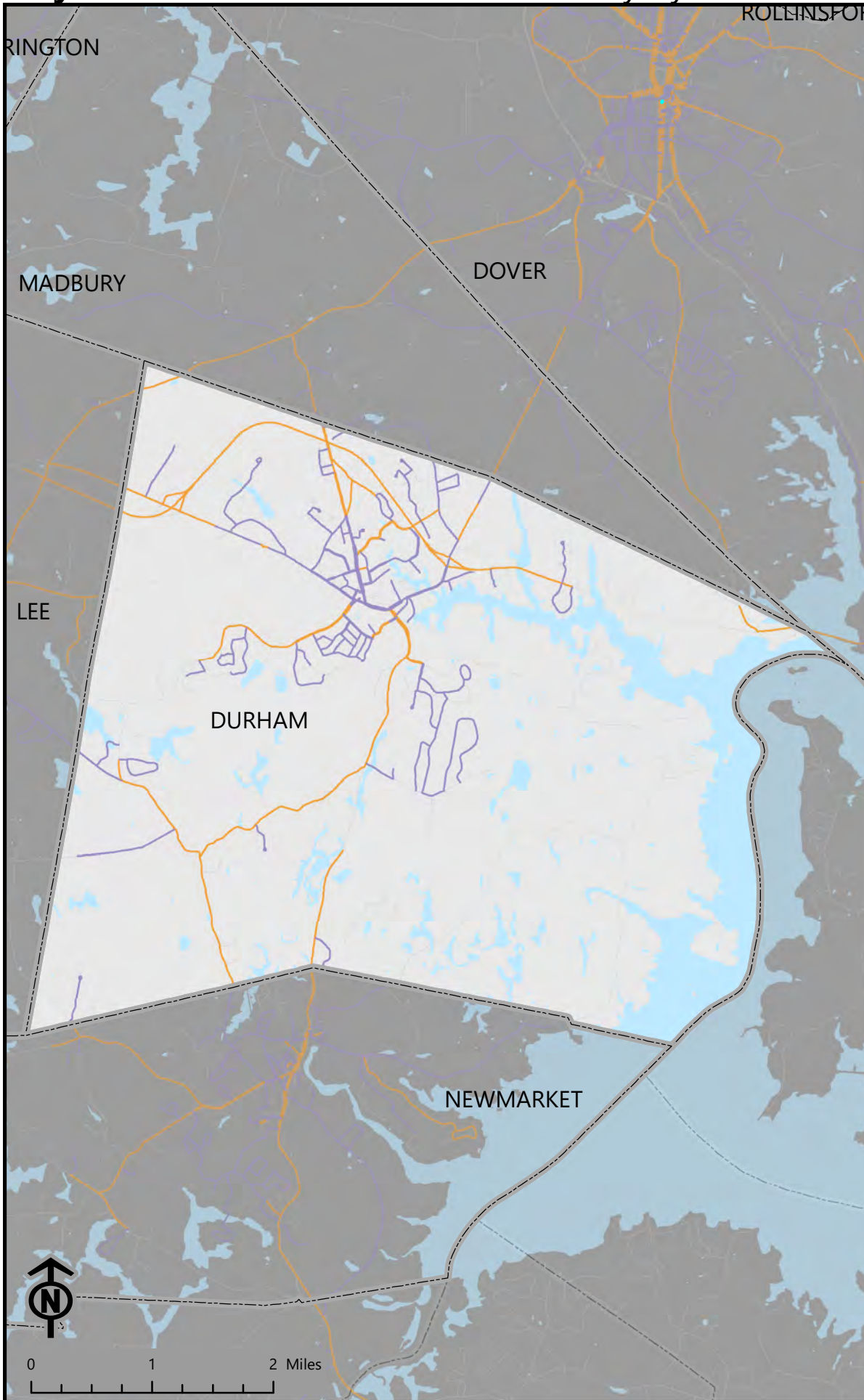
- Low Stress (1 + 2)
- High Stress (3 + 4)

Base Layers

- Municipalities
- Water
- Roads



Bicycle Level of Traffic Stress: Centrality by Stress Level



The centrality of a road is the number of neighborhoods that can reach a school, town hall, or large employer using that road.

Low Stress roads are suitable for the majority of bicyclists. High Stress roads are only suitable for confident or fearless bicyclists.

Legend

Centrality

- 1 - 100
- 101 - 250
- 251 - 500
- 501 - 1000
- 1000+

Stress Level

- Low Stress (1 + 2)
- High Stress (3 + 4)

Base Layers

- Municipalities
- Water
- Roads

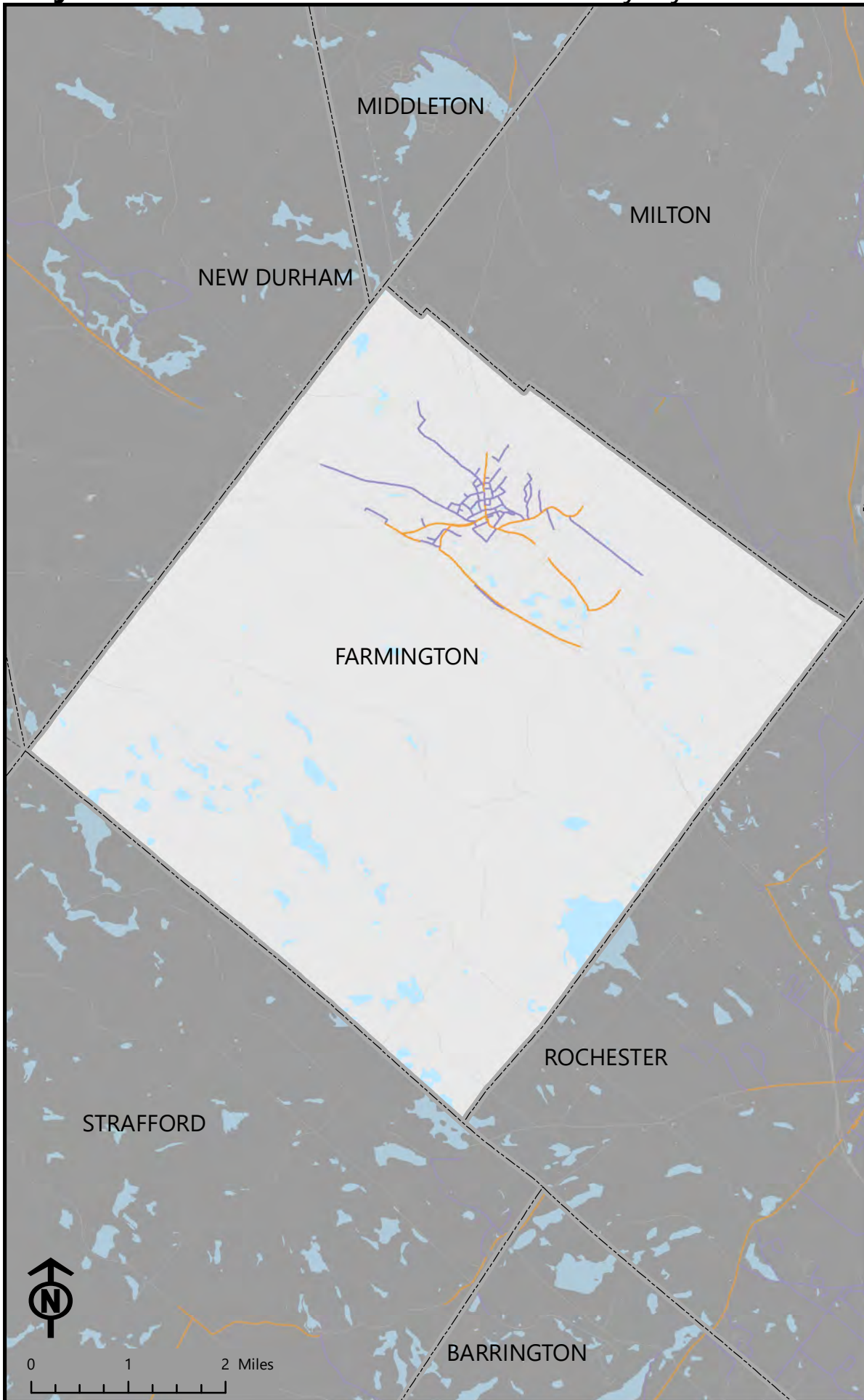


Bicycle Level of Traffic Stress: Centrality by Stress Level



The centrality of a road is the number of neighborhoods that can reach a school, town hall, or large employer using that road.

Low Stress roads are suitable for the majority of bicyclists. High Stress roads are only suitable for confident or fearless bicyclists.



Legend

Centrality

- 1 - 100
- 101 - 250
- 251 - 500
- 501 - 1000
- 1000+

Stress Level

- Low Stress (1 + 2)
- High Stress (3 + 4)

Base Layers

- Municipalities
- Water
- Roads



0 1 2 Miles

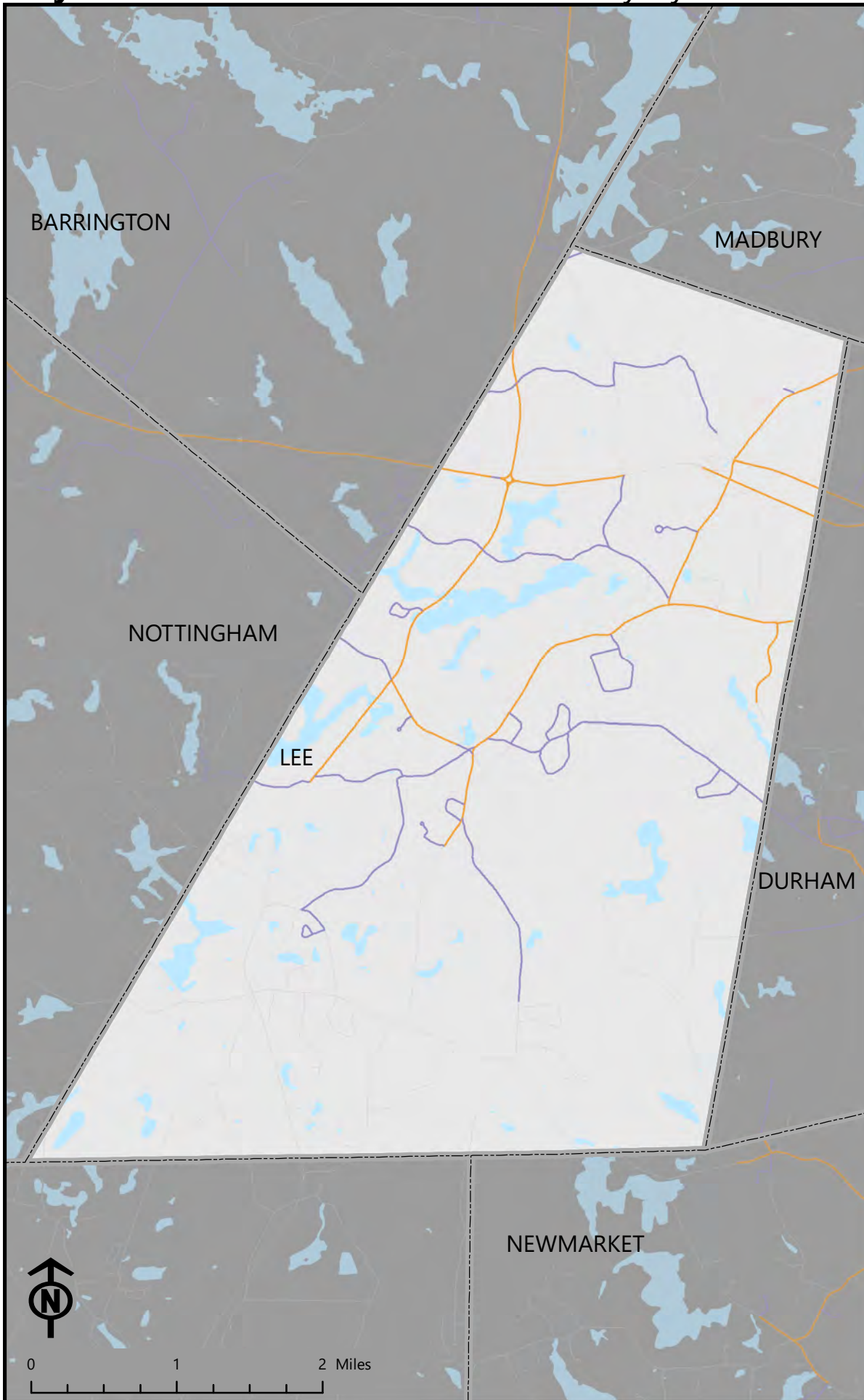


Bicycle Level of Traffic Stress: Centrality by Stress Level



The centrality of a road is the number of neighborhoods that can reach a school, town hall, or large employer using that road.

Low Stress roads are suitable for the majority of bicyclists. High Stress roads are only suitable for confident or fearless bicyclists.



Legend

Centrality

- 1 - 100
- 101 - 250
- 251 - 500
- 501 - 1000
- 1000+

Stress Level

- Low Stress (1 + 2)
- High Stress (3 + 4)

Base Layers

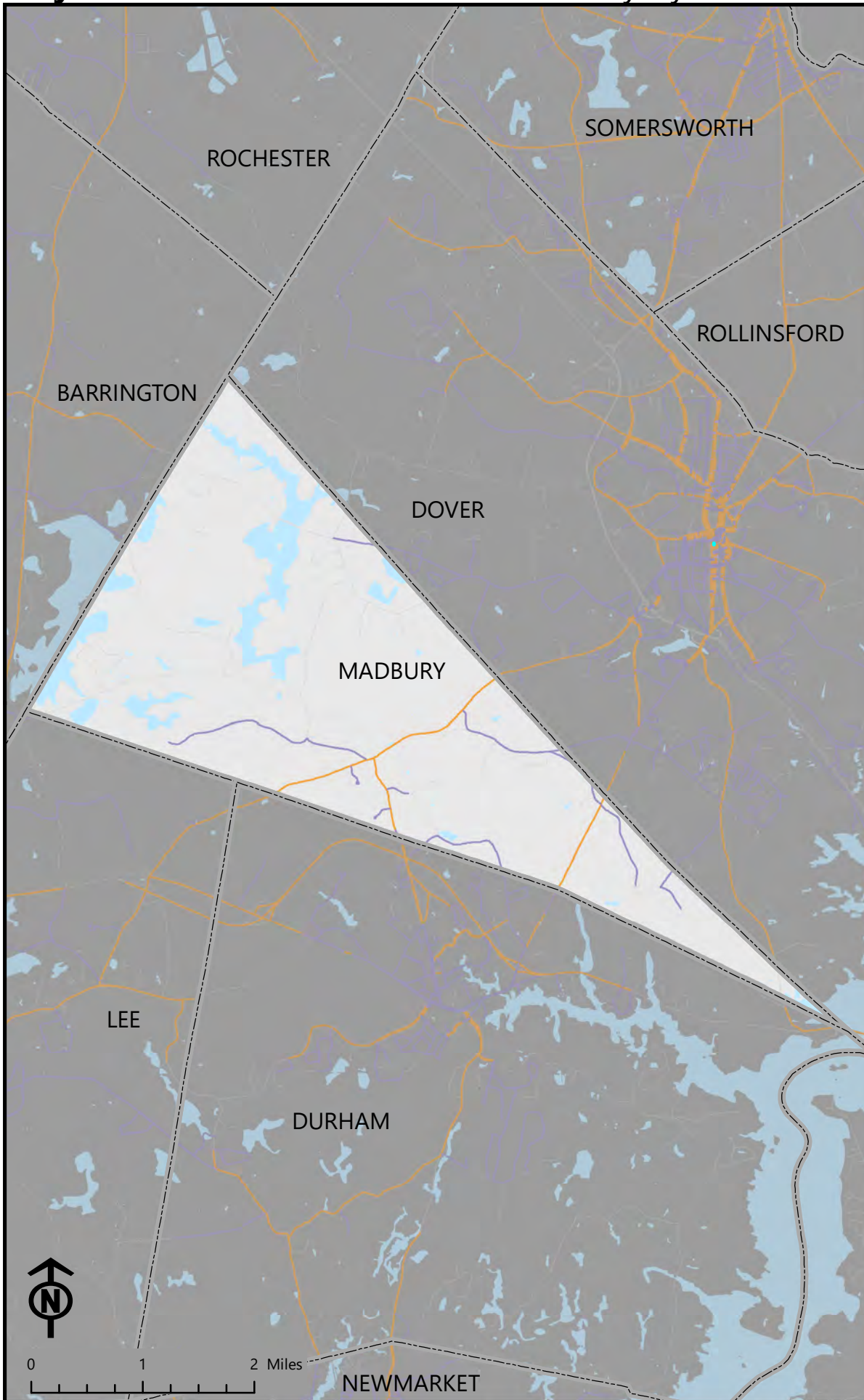
- Municipalities
- Water
- Roads



0 1 2 Miles



Bicycle Level of Traffic Stress: Centrality by Stress Level



The centrality of a road is the number of neighborhoods that can reach a school, town hall, or large employer using that road.

Low Stress roads are suitable for the majority of bicyclists. High Stress roads are only suitable for confident or fearless bicyclists.

Legend

Centrality

- 1 - 100
- 101 - 250
- 251 - 500
- 501 - 1000
- 1000+

Stress Level

- Low Stress (1 + 2)
- High Stress (3 + 4)

Base Layers

- Municipalities
- Water
- Roads



0 1 2 Miles

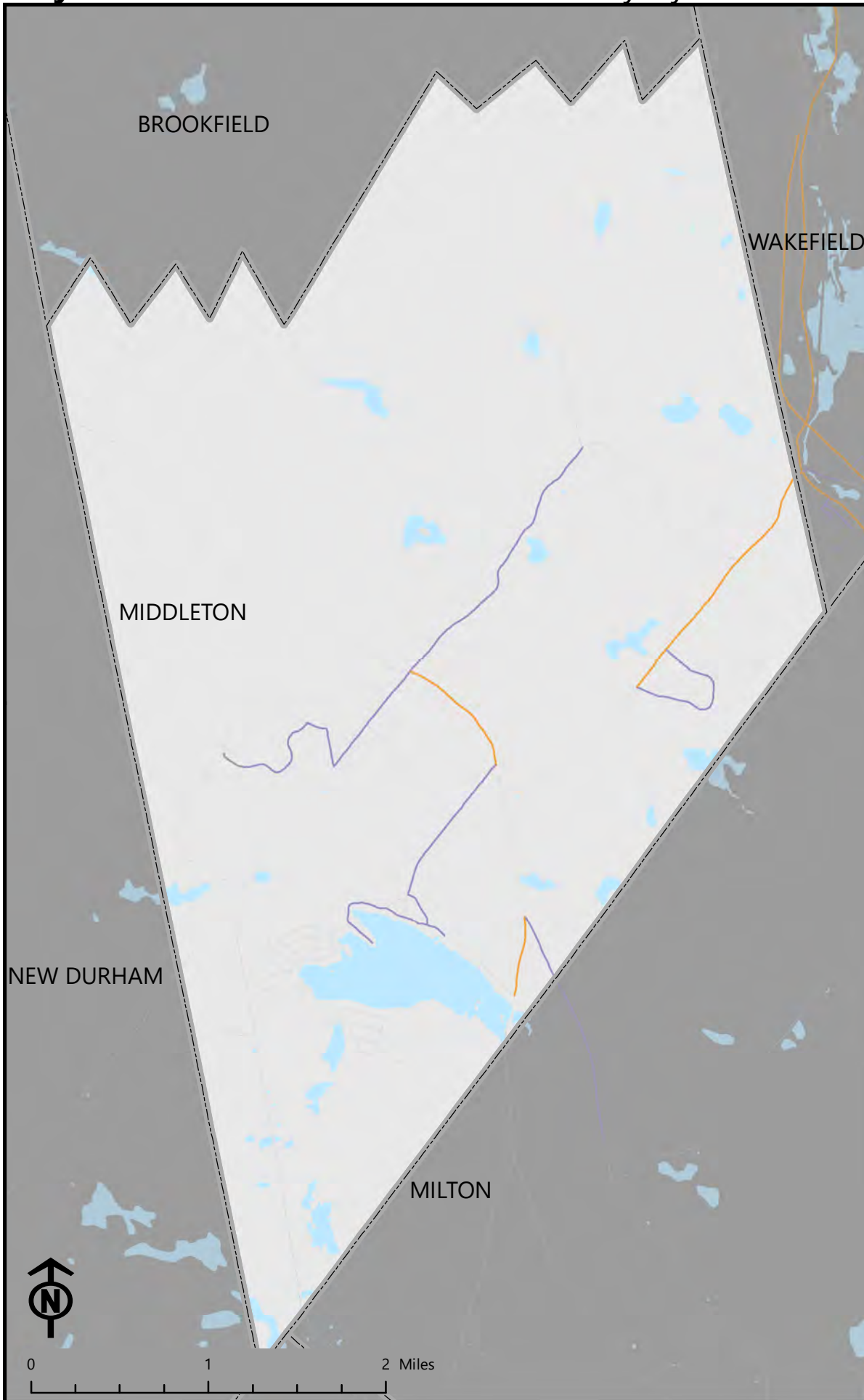


Bicycle Level of Traffic Stress: Centrality by Stress Level



The centrality of a road is the number of neighborhoods that can reach a school, town hall, or large employer using that road.

Low Stress roads are suitable for the majority of bicyclists. High Stress roads are only suitable for confident or fearless bicyclists.



Legend

Centrality

- 1 - 100
- 101 - 250
- 251 - 500
- 501 - 1000
- 1000+

Stress Level

- Low Stress (1 + 2)
- High Stress (3 + 4)

Base Layers

- Municipalities
- Water
- Roads



Bicycle Level of Traffic Stress: Centrality by Stress Level



The centrality of a road is the number of neighborhoods that can reach a school, town hall, or large employer using that road.

Low Stress roads are suitable for the majority of bicyclists. High Stress roads are only suitable for confident or fearless bicyclists.

Legend

Centrality

- 1 - 100
- 101 - 250
- 251 - 500
- 501 - 1000
- 1000+

Stress Level

- Low Stress (1 + 2)
- High Stress (3 + 4)

Base Layers

- Municipalities
- Water
- Roads



0 1 2 Miles

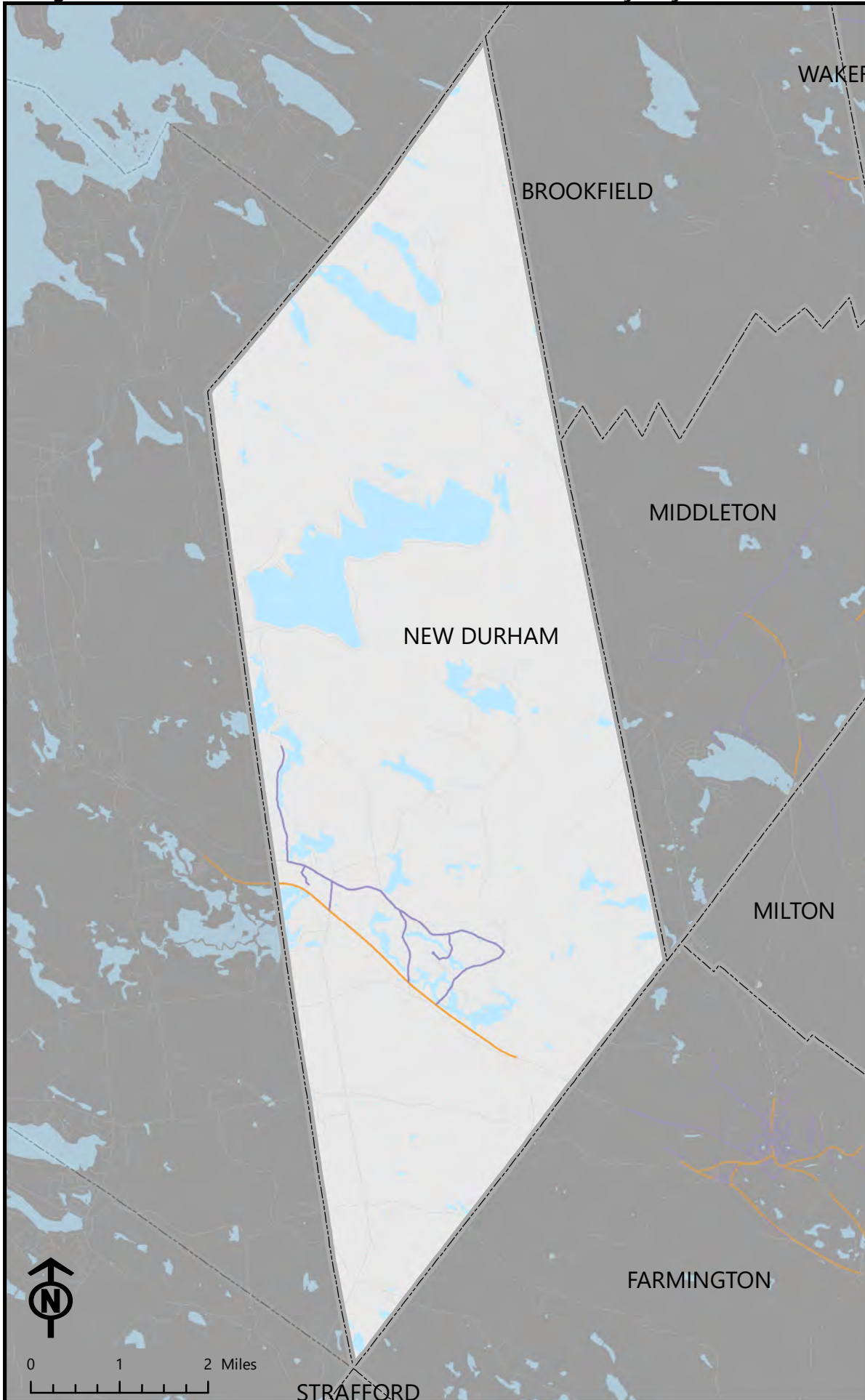


Bicycle Level of Traffic Stress: Centrality by Stress Level



The centrality of a road is the number of neighborhoods that can reach a school, town hall, or large employer using that road.

Low Stress roads are suitable for the majority of bicyclists. High Stress roads are only suitable for confident or fearless bicyclists.



Legend

Centrality

- 1 - 100
- 101 - 250
- 251 - 500
- 501 - 1000
- 1000+

Stress Level

- Low Stress (1 + 2)
- High Stress (3 + 4)

Base Layers

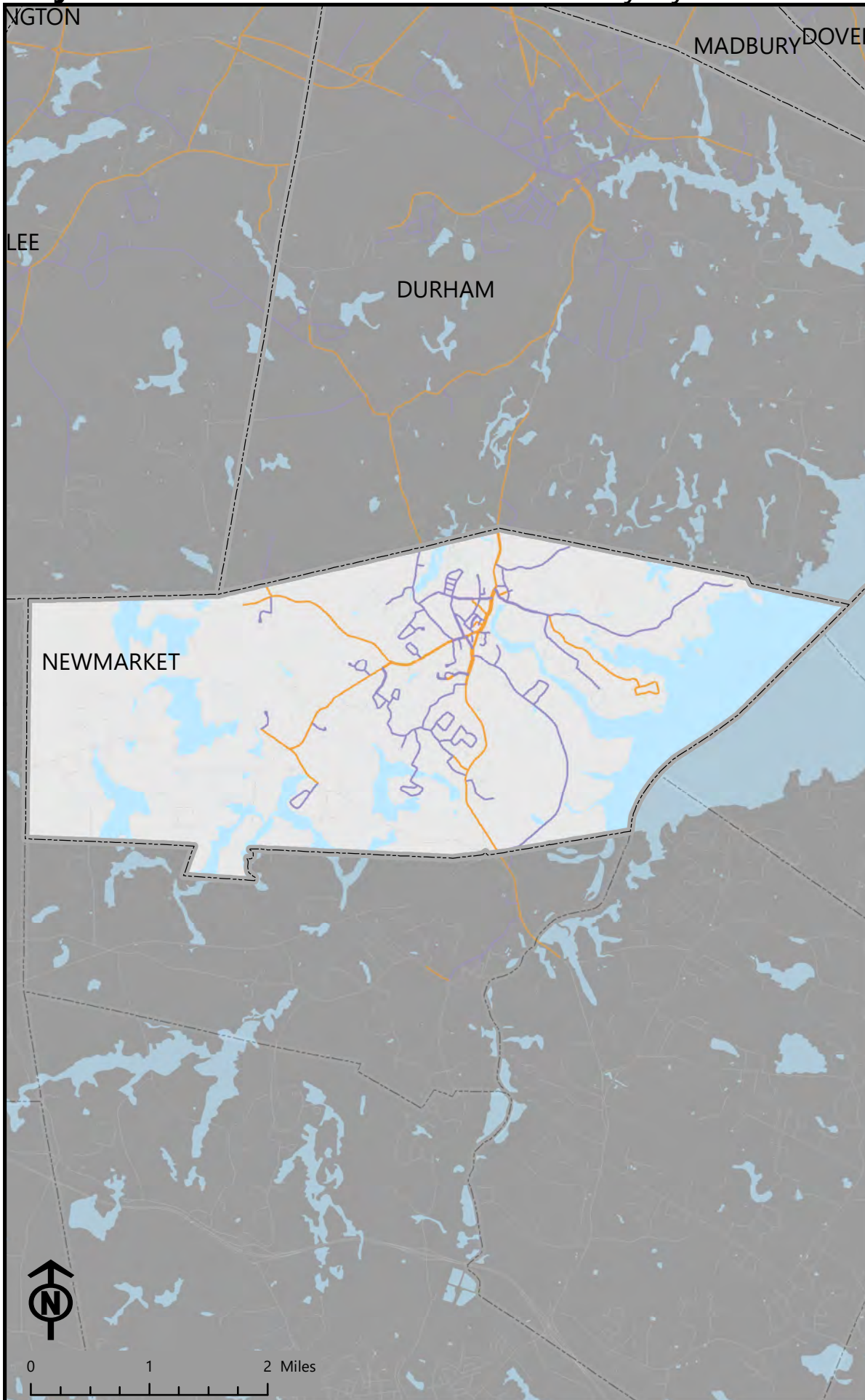
- Municipalities
- Water
- Roads



0 1 2 Miles



Bicycle Level of Traffic Stress: Centrality by Stress Level








The centrality of a road is the number of neighborhoods that can reach a school, town hall, or large employer using that road.



Low Stress roads are suitable for the majority of bicyclists. High Stress roads are only suitable for confident or fearless bicyclists.

Legend

Centrality

-  1 - 100
-  101 - 250
-  251 - 500
-  501 - 1000
-  1000+

Stress Level

-  Low Stress (1 + 2)
-  High Stress (3 + 4)

Base Layers

-  Municipalities
-  Water
-  Roads

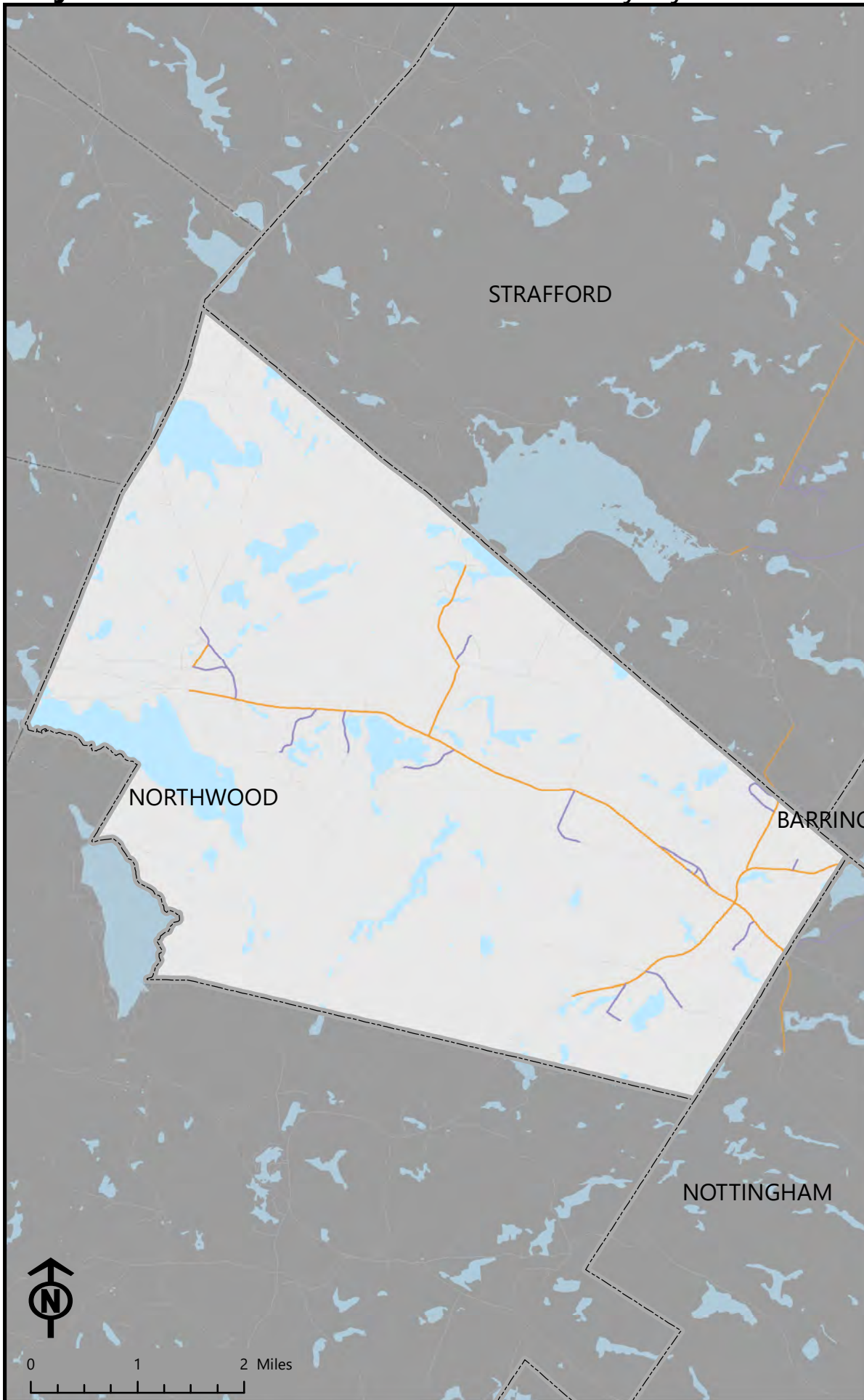


Bicycle Level of Traffic Stress: Centrality by Stress Level



The centrality of a road is the number of neighborhoods that can reach a school, town hall, or large employer using that road.

Low Stress roads are suitable for the majority of bicyclists. High Stress roads are only suitable for confident or fearless bicyclists.



Legend

Centrality

- 1 - 100
- 101 - 250
- 251 - 500
- 501 - 1000
- 1000+

Stress Level

- Low Stress (1 + 2)
- High Stress (3 + 4)

Base Layers

- Municipalities
- Water
- Roads



0 1 2 Miles

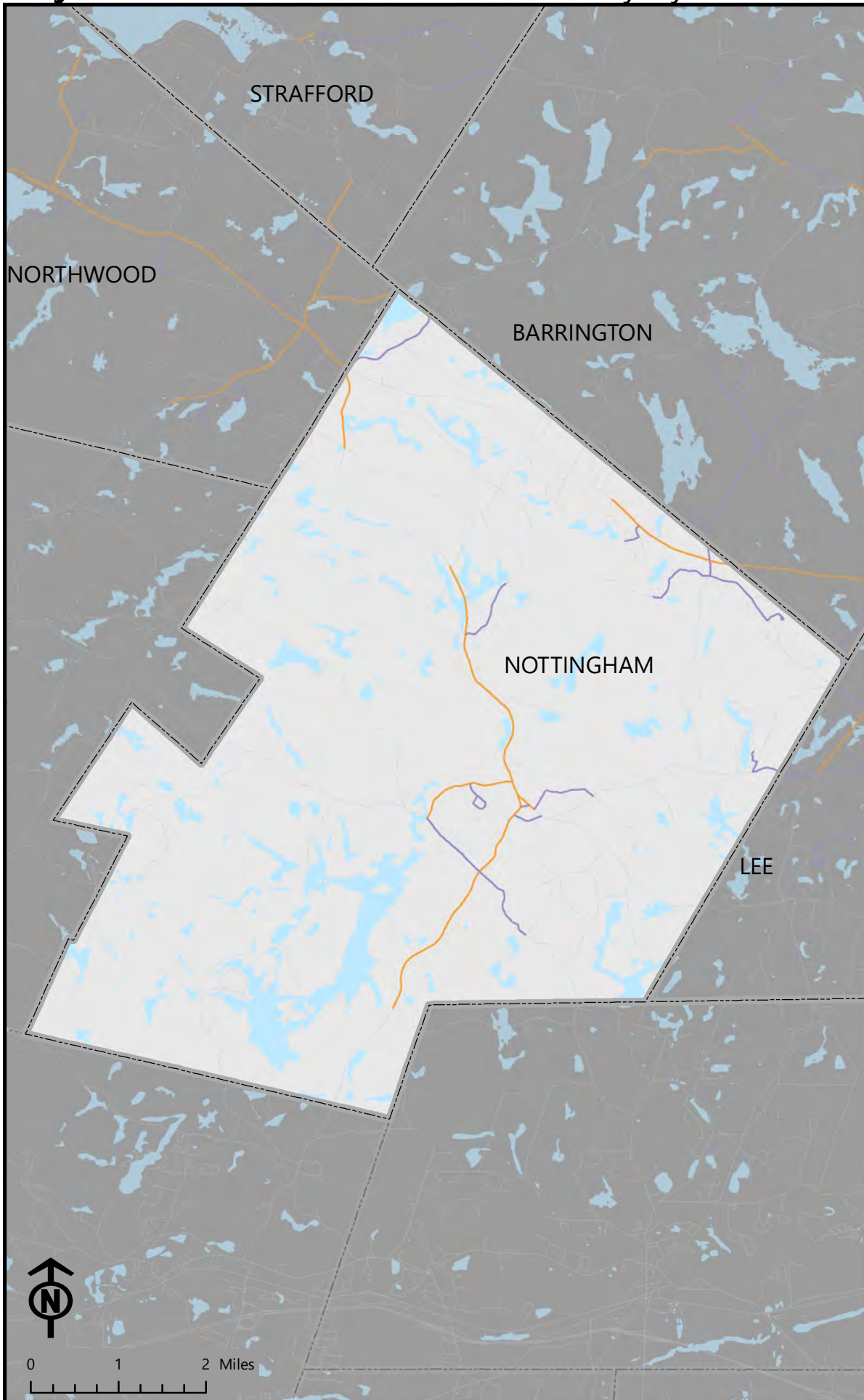


Bicycle Level of Traffic Stress: Centrality by Stress Level



The centrality of a road is the number of neighborhoods that can reach a school, town hall, or large employer using that road.

Low Stress roads are suitable for the majority of bicyclists. High Stress roads are only suitable for confident or fearless bicyclists.



Legend

Centrality

- 1 - 100
- 101 - 250
- 251 - 500
- 501 - 1000
- 1000+

Stress Level

- Low Stress (1 + 2)
- High Stress (3 + 4)

Base Layers

- Municipalities
- Water
- Roads



0 1 2 Miles

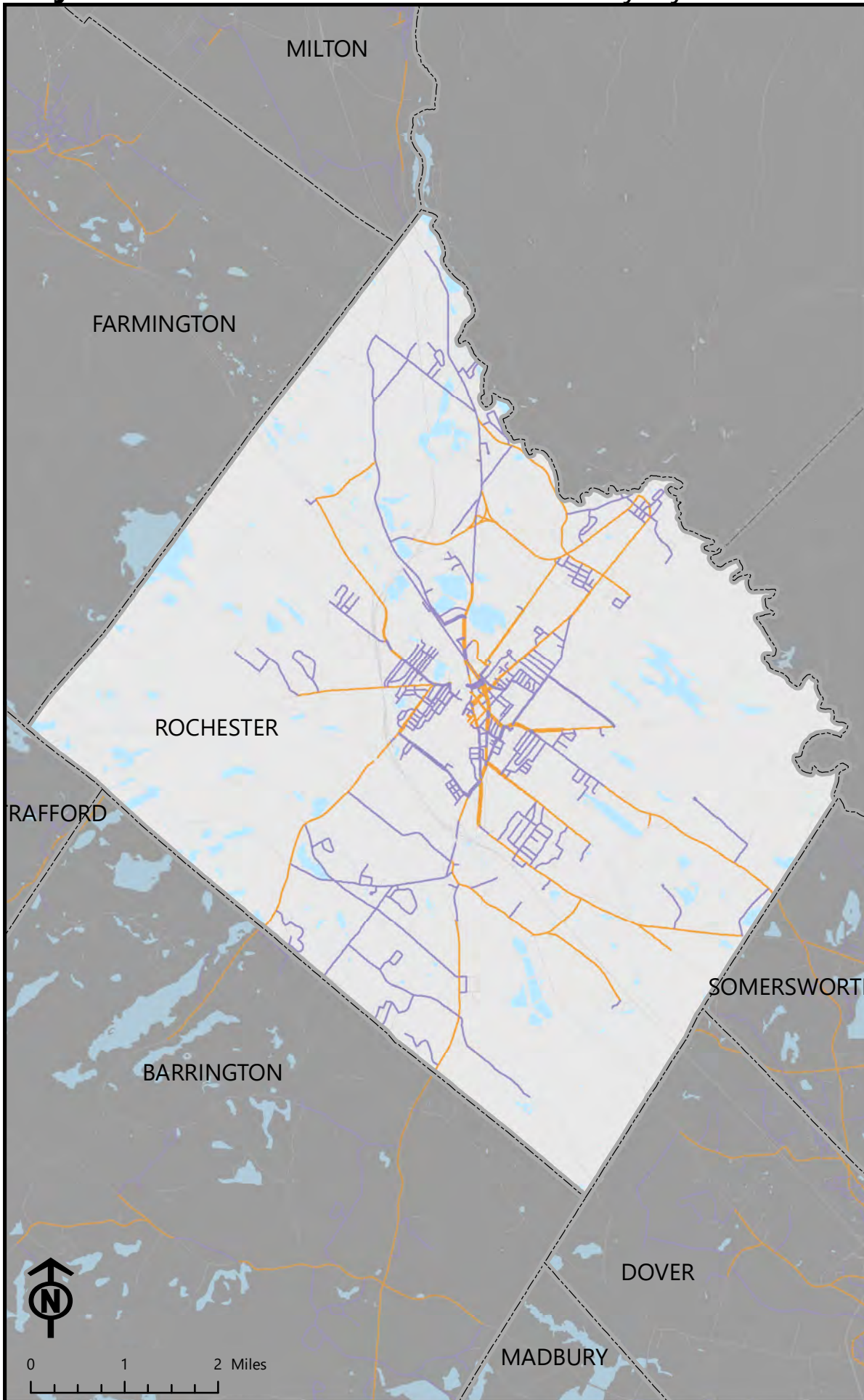


Bicycle Level of Traffic Stress: Centrality by Stress Level



The centrality of a road is the number of neighborhoods that can reach a school, town hall, or large employer using that road.

Low Stress roads are suitable for the majority of bicyclists. High Stress roads are only suitable for confident or fearless bicyclists.



Legend

Centrality

- 1 - 100
- 101 - 250
- 251 - 500
- 501 - 1000
- 1000+

Stress Level

- Low Stress (1 + 2)
- High Stress (3 + 4)

Base Layers

- Municipalities
- Water
- Roads

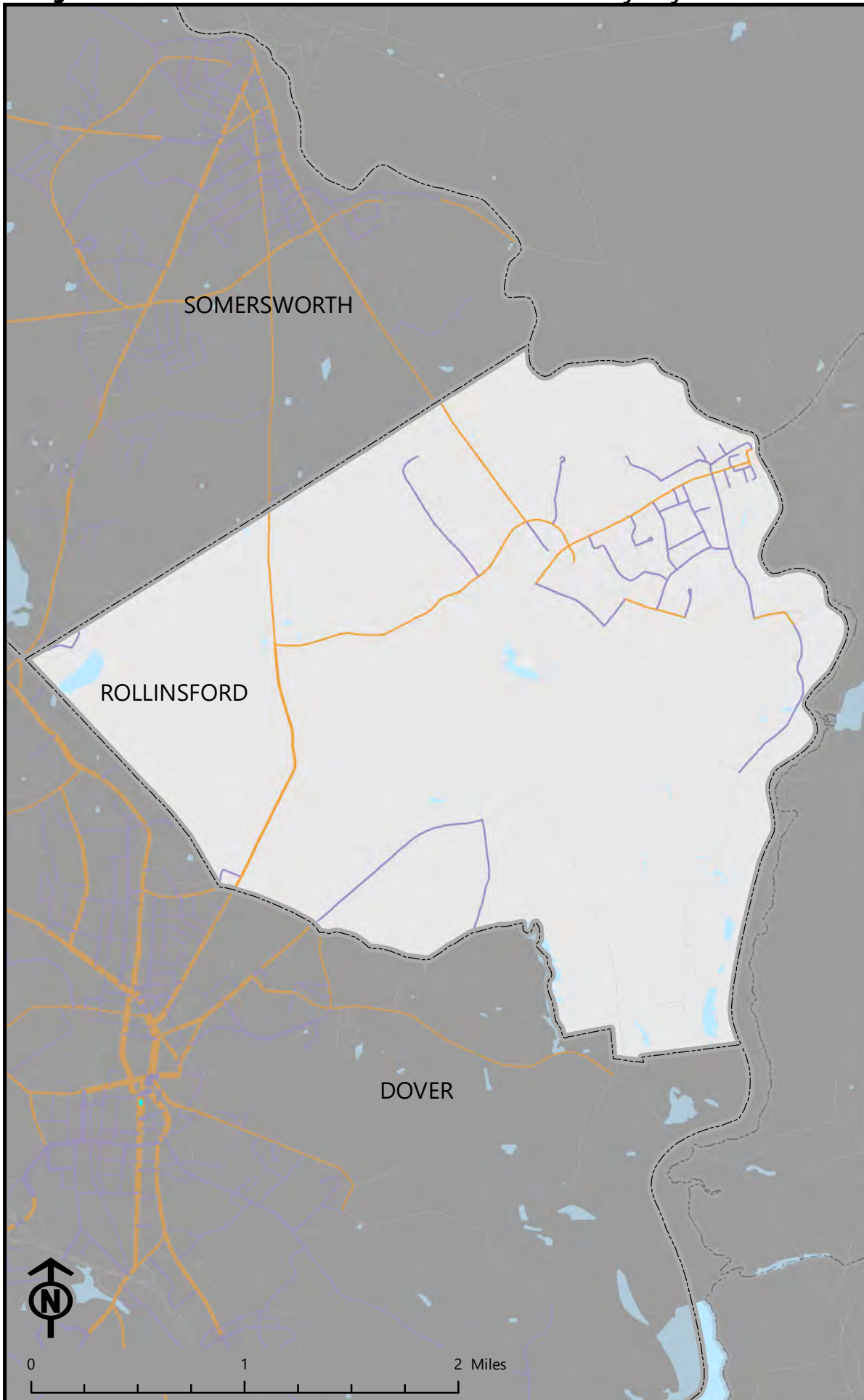


Bicycle Level of Traffic Stress: Centrality by Stress Level



The centrality of a road is the number of neighborhoods that can reach a school, town hall, or large employer using that road.

Low Stress roads are suitable for the majority of bicyclists. High Stress roads are only suitable for confident or fearless bicyclists.



Legend

Centrality

- 1 - 100
- 101 - 250
- 251 - 500
- 501 - 1000
- 1000+

Stress Level

- Low Stress (1 + 2)
- High Stress (3 + 4)

Base Layers

- Municipalities
- Water
- Roads

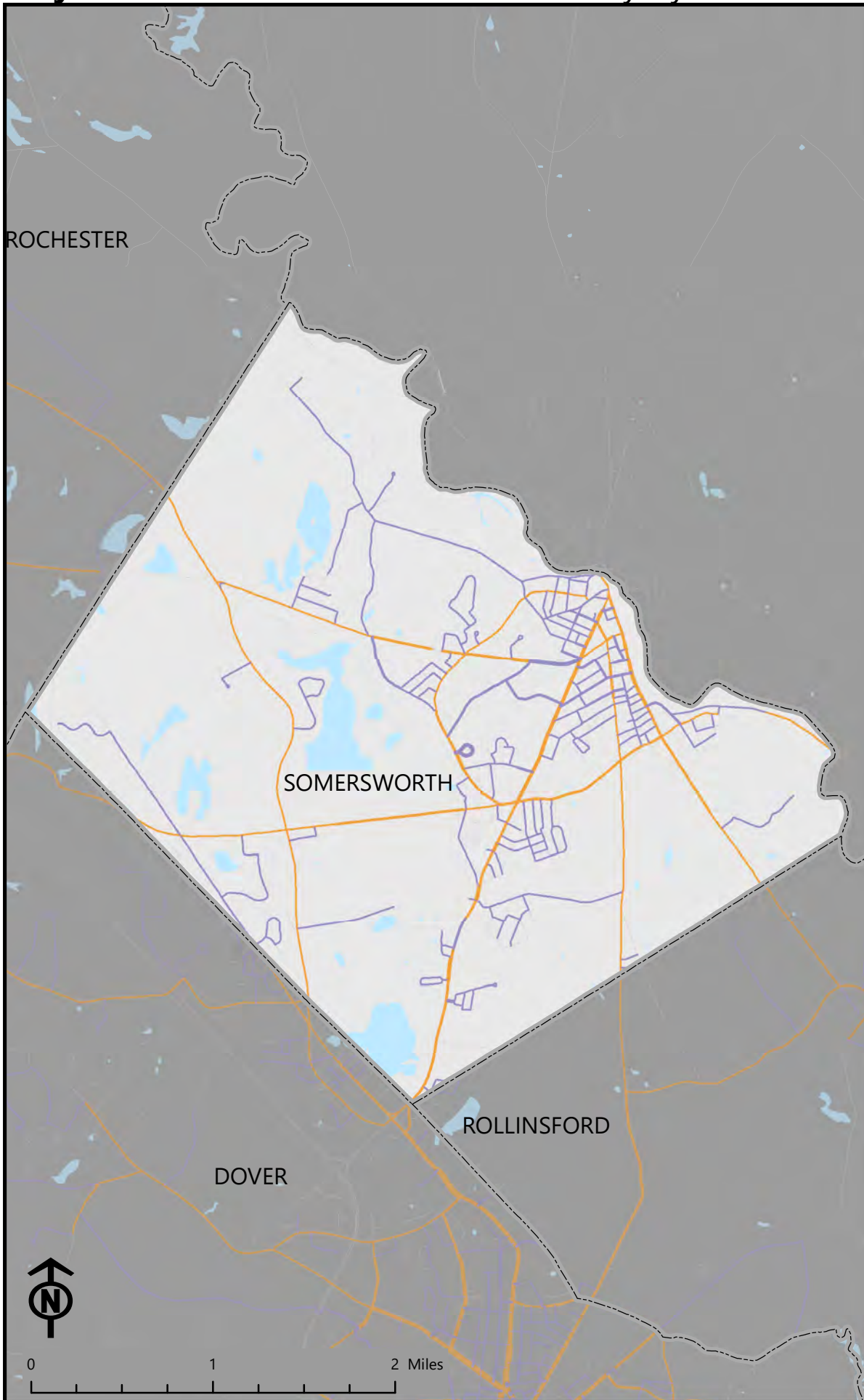


Bicycle Level of Traffic Stress: Centrality by Stress Level



The centrality of a road is the number of neighborhoods that can reach a school, town hall, or large employer using that road.

Low Stress roads are suitable for the majority of bicyclists. High Stress roads are only suitable for confident or fearless bicyclists.



Legend

Centrality

- 1 - 100
- 101 - 250
- 251 - 500
- 501 - 1000
- 1000+

Stress Level

- Low Stress (1 + 2)
- High Stress (3 + 4)

Base Layers

- Municipalities
- Water
- Roads

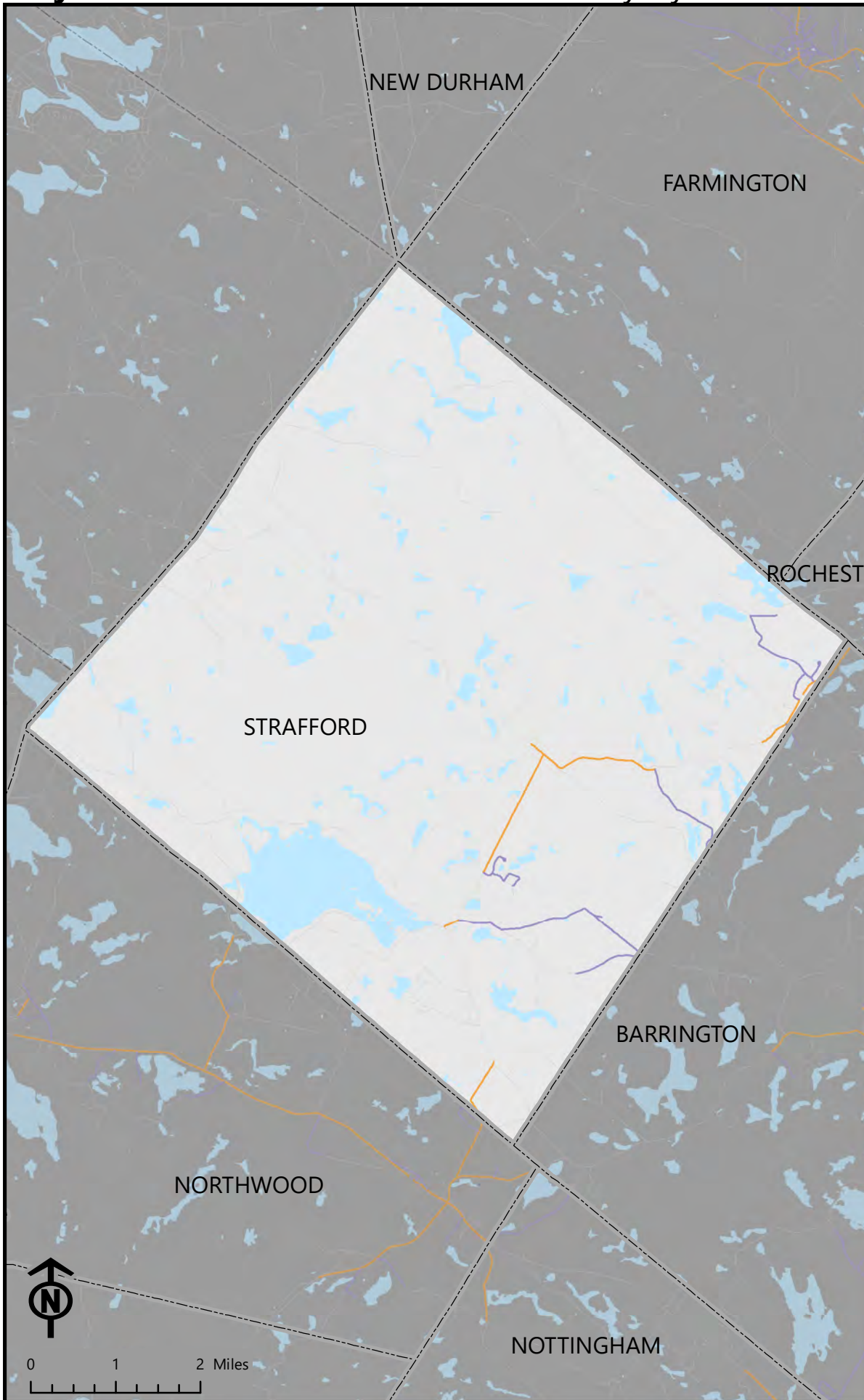


Bicycle Level of Traffic Stress: Centrality by Stress Level



The centrality of a road is the number of neighborhoods that can reach a school, town hall, or large employer using that road.

Low Stress roads are suitable for the majority of bicyclists. High Stress roads are only suitable for confident or fearless bicyclists.



Legend

Centrality

- 1 - 100
- 101 - 250
- 251 - 500
- 501 - 1000
- 1000+

Stress Level

- Low Stress (1 + 2)
- High Stress (3 + 4)

Base Layers

- Municipalities
- Water
- Roads



0 1 2 Miles



Bicycle Level of Traffic Stress: Centrality by Stress Level



The centrality of a road is the number of neighborhoods that can reach a school, town hall, or large employer using that road.

Low Stress roads are suitable for the majority of bicyclists. High Stress roads are only suitable for confident or fearless bicyclists.



Legend

Centrality

- 1 - 100
- 101 - 250
- 251 - 500
- 501 - 1000
- 1000+

Stress Level

- Low Stress (1 + 2)
- High Stress (3 + 4)

Base Layers

- Municipalities
- Water
- Roads

