

# NH MPO Roadway Safety Action Plans

The four Metropolitan Planning Organizations (MPOs) in New Hampshire (Nashua Regional Planning Commission (NRPC), Rockingham Planning Commission (RPC), Southern New Hampshire Planning Commission (SNHPC), and Strafford Regional Planning Commission (SRPC) are each developing a comprehensive Roadway Safety Action Plan (RSAP) to reduce fatalities and serious injuries from roadway crashes within their respective regions. This effort is being funded in part by a United States Department of Transportation (USDOT) [Safe Streets and Roads for All \(SS4A\)](#) planning grant.

The NH MPO RSAPs will incorporate the [Safe System](#) approach which builds and reinforces multiple layers of protection to prevent crashes from happening in the first place and minimize the harm from crashes when they occur. This is a shift from a conventional safety approach because it focuses on both human mistakes AND human vulnerability and designs a system with many redundancies in place to protect everyone. The approach includes the six following principles:

- Death and Serious Injuries are Unacceptable
- Humans Make Mistakes
- Humans Are Vulnerable
- Responsibility is Shared
- Safety is Proactive
- Redundancy is Crucial



[Source: Federal Highway Administration \(FHWA\)](#)

NH MPO’s RSAPs will contain a series of strategies and actions—including driver, pedestrian, and bicycle infrastructure--that align with the five elements that are the foundation of the Safe System approach:

- Safer People
- Safer Roads
- Safer Vehicles
- Safer Speeds
- Post-Crash Care

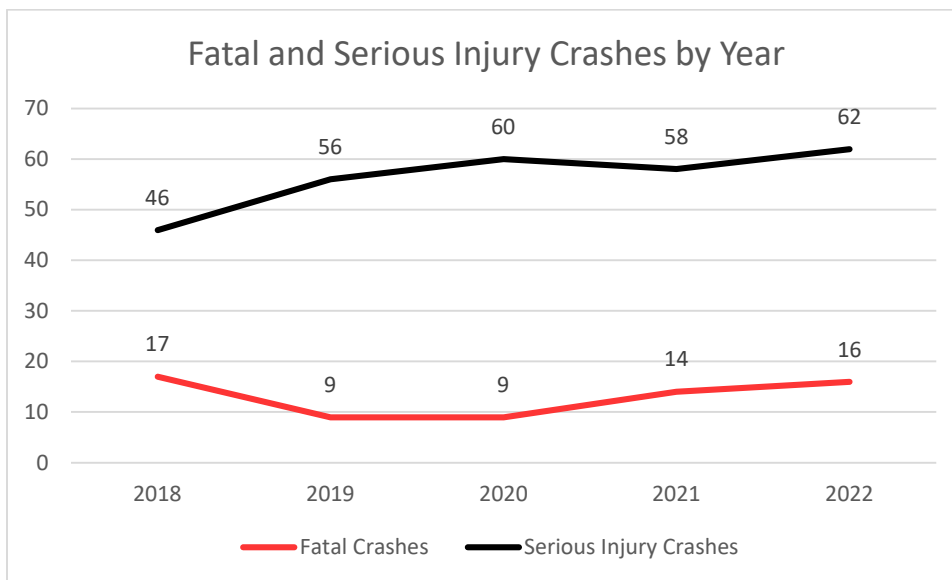
NH MPO’s RSAPs will also align with State priorities as outlined in NHDOT’s [2022-2026 New Hampshire Strategic Highway Safety Plan](#) which identifies a series of strategies and actions to prioritize safety investments that address specific crash factors. This five-year State plan also informs both infrastructure and non-infrastructure projects funded annually through Federal programs.

The NH MPO’s RSAPs will also include equity considerations to ensure an inclusive and representative process in the development of the plan. The focus on equity also means consideration of socioeconomic factors when prioritizing actions.

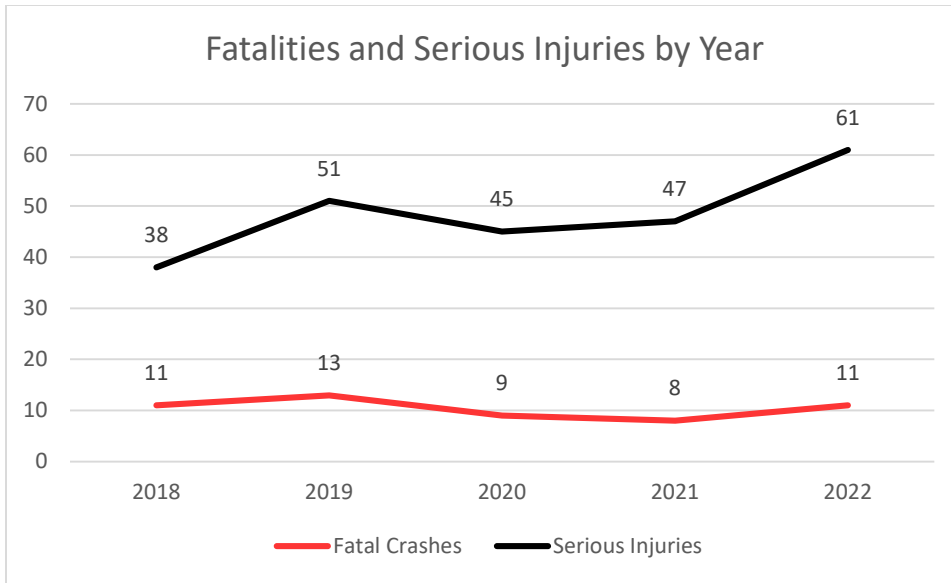
## NH MPO Roadway Statistics

The graphs below reflect the fatal and serious injury crashes show the last five full years of available crash data from the New Hampshire Department of Transportation. These graphs are for each of the four MPOs.

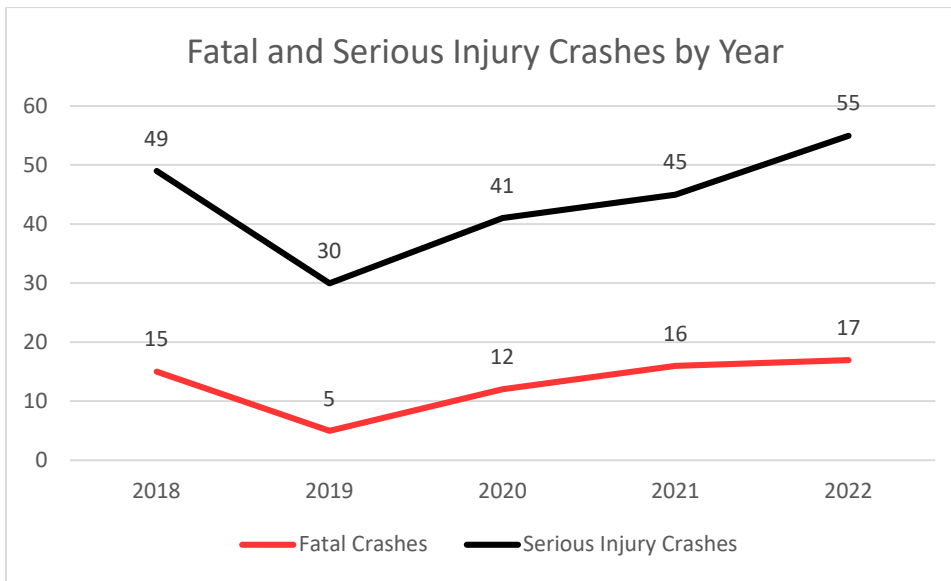
### Rockingham Planning Commission (RPC)



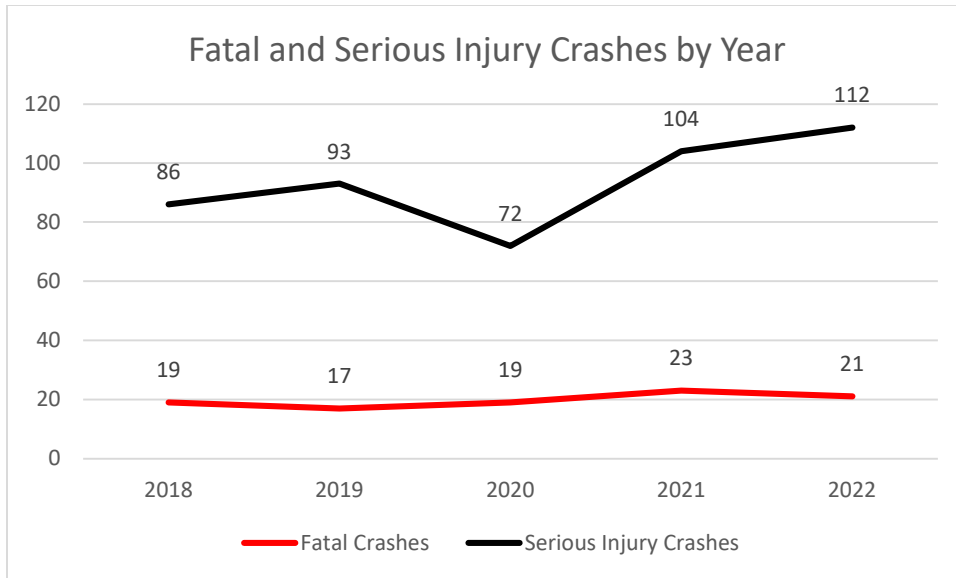
**Nashua Regional Planning Commission (NRPC)**



**Strafford Regional Planning Commission (SRPC)**



**Southern New Hampshire Planning Commission (SNHPC)**



The [Toward Zero Deaths national strategy](#) has set a benchmark of the year 2050 for the United States to reach zero roadway deaths. The MPO's RSAPs will include a comprehensive data analysis that identifies where roadway safety investments could be prioritized in the years ahead to help their respective communities reach the goal of zero fatalities and serious injuries.

## Project Schedule

The MPO's RSAP effort began in March 2024 and will run through December of this year. While the consultant team and the NH MPO steering committee meet on a monthly basis, a number of other stakeholder and community meetings have taken place or are planned. These include:

- August and September: MPO Technical Advisory Committee (TAC) listening sessions with the respective communities
- September and October: Seven meetings with Focus Groups
- October: Two virtual public meetings

As the dates and times for the Focus Groups and public meetings are determined, they will be publicized on this website and through social media.

# Relevant Links

[USDOT Safe System Approach](#)

[USDOT Safe Streets and Roads for All Grant Program](#)

[New Hampshire Strategic Highway Safety Plan](#)

[New Hampshire Highway Safety Improvement Program](#)

[New Hampshire Triennial Highway Safety Plan](#)