

SRPC FISCAL YEAR ANNUAL REPORT '22

ACCEPTED: September 22, 2022

STRAFFORD
Regional Planning Commission

THE ROLE OF THE COMMISSION

Strafford Regional Planning Commission works with municipalities, statewide organizations and other partners to provide technical assistance with planning documents, outreach, projects and regulations. We create a space for our stakeholders to connect and share information, and we provide information to the public, offering opportunities for engagement with important planning initiatives.

We serve our communities in two additional designated roles, as a Metropolitan Planning Organization, and as an Economic Development District. We work closely with the NH Department of Transportation to implement data collection programs, assist and advocate for local transit agencies and municipal projects, and create long-range plans which address safety and quality of life. With guidance from our partners, we maintain a regional economic development strategy that includes economic trends and local priority projects. We also assist local communities with economic development strategies and facilitate regional discussion.

STAFF

Jen Czysz	Stephen Geis
Kyle Pimental	Jackson Rand
Shayna Sylvia	Mark Davie
Kathy Foster	Autumn Scott
Colin Lentz	Natalie Gemma
Rachel Dewey	Megan Taylor-Fetter
James Burdin	Blair Haney

MUNICIPALITIES

Barrington	New Durham
Brookfield	Newmarket
Dover	Northwood
Durham	Nottingham
Farmington	Rochester
Lee	Rollinsford
Madbury	Somersworth
Middleton	Strafford
Milton	Wakefield

OFFICERS

David Landry, Chair
Peter Nelson, Vice Chair
Tom Crosby, Secretary/
Treasurer

CONTACT US

150 Wakefield Street,
Suite 12, Rochester, NH 03687
Tel: (603)994-3500

E-mail: srpc@strafford.org

Website: www.strafford.org

Instagram: [@strafford.rpc](https://www.instagram.com/strafford.rpc)

Twitter: [@StraffordRPC](https://twitter.com/StraffordRPC)

Facebook:

[@straffordregionalplanningcommission](https://www.facebook.com/straffordregionalplanningcommission)





Letter from the **EXECUTIVE DIRECTOR**

Thank you to the staff, commissioners, and many, many community partners that have made Fiscal Year 2022 an exciting and successful year. I am pleased to say that Fiscal Year 2023 is looking to continue the trend.

The year has notably been one of innovation, creativity, and resilience in a changing world. The pandemic taught us that we are a nimble organization and we have worked hard to bring that same spirit to the work we do with our communities and partners. In response to the pandemic, SRPC staff implemented new technologies to operate as a fully remote office. While the office is open daily, staff, including interns, have been able to travel, visit family, study abroad, and work simultaneously from as far away as Norway and Ecuador. Our virtual workplace has been supported by having fully digital files, not ubiquitous across our communities. Through our CARES Act grant, SRPC staff have been working on site with our municipalities to scan local records, including large format plans so that they too can benefit from remote access to digital files.

In October 2020, the new SRPC website was launched in a completely redesigned format, featuring new branding, and enhanced online maps. A key component of this new site was ensuring that information and resources are easy to access. In the following pages you'll read about one of our StoryMaps, Promoting Outdoor Play, an innovative and interactive platform to explore the more than 350 recreation sites in the region.

Our data team has been busy creating and updating a new annual Data Snapshot publication, the second edition of which was published in April 2022. This easy-to-use document provides community members and planning partners with clear, current data about the region and our communities. The Snapshot is accompanied by a GIS data viewer and in FY2023 SRPC will publish interactive raw data from the Snapshot.

Beyond continuing to improve resources and information, our planning processes have been marked by the current economic landscape. Our state, region, and communities have grappled with staffing shortages, rising inflation, supply chain disruptions and limited housing availability. Our Comprehensive Economic Development Strategy (CEDS) thematically centered upon Equity and Environmental Justice, Resilience, and Partnerships and Collaboration. The 2022 update highlighted progress made across the region to address these many concerns – such as provision of technical assistance to small businesses, planning level development of regional transportation projects, and providing environmental assessments of brownfield sites to support local development.

Related, housing has been one of the hottest topics of the year. SRPC is working in collaboration with the 8 other NH RPCs to develop a Regional Housing Needs Assessment, a significant initiative kicked off in the fall of 2021 and continuing into FY2023. This update looks at understanding the current housing shortage and high prices, needs for

the future, and solutions to help address the housing challenge. The project will continue with an implementation initiative that will kick off in FY2023 through a congressionally designated funds from the Department of Housing and Urban Development. This second phase will include an update to the Regional Plan, looking to integrate lessons learned from the RHNA and plan for housing and environmental protection with a balanced approach.

To keep up to date with other projects and happenings at SRPC throughout the year, and as we move into FY2023, we encourage you to subscribe to the SRPC newsletters and our weekly Bits and Pieces updates, We also share news through our website and on social media, so make sure to follow along. We also encourage those interested to get involved throughout the year, as there are many opportunities to participate in local and regional projects and network with your neighbors at our resiliency roundtables.

Sincerely,

A handwritten signature in black ink, appearing to read 'Jennifer Czysz', with a long horizontal flourish extending to the right.

Jennifer Czysz, AICP
SRPC Executive Director

TABLE OF CONTENTS

VOLUNTEER AND STAFF DIRECTORY.....1

FY 2022 Commissioner and Executive Committee Members.....	1
Staff Directory.....	2

FY 2022 PROJECT HIGHLIGHTS.....9

Engagement and Advocacy by the Numbers.....	17
Meaningful Outreach.....	18
PLANS Spotlight: Sunrise Lake Watershed Management Plan.....	26
GIS Highlights.....	28
MAPS Spotlight: Durham Groundwater.....	30
PROJECTS Spotlight: Dover Building Resilience by Building Equity.....	31
SERVICES Spotlight: COVID-19 Recovery.....	32
COLLABORATIONS Spotlight: Explore Moose Mountains.....	36
Data Collection by the Numbers.....	37
Social Media, E-Communications & Online Presence.....	38
EVENT Spotlight: Resilient Shoreline Tour.....	39
Awards and Awardees.....	40

FY 2023 BUDGET.....43

VOLUNTEER AND STAFF DIRECTORY

Volunteers nominated by a municipal planning board and appointed by a municipal council or selectboard represent their community on the Commission. Per RSA 36: 45-58 each member municipality may appoint between two and four representatives to the Commission dependent on population. Commissioners are considered voting members if their community is dues paying. Commissioners are appointed for four year terms and inform planning policies for the region. They are tasked with providing input to staff; adopting reports, planning documents, amended Bylaws, and the Annual Budget and Dues; and electing Officers and Executive Committee members.

FY 2022 Commissioner and Executive Committee Members

Barrington

John Huckins (7/9/23)
Steve Diamond (7/1/25)

Brookfield

Ed Comeau (3/2/24)
Vacant (3/2/26)

Dover

Stephanie Benedetti
(11/4/22)
David Landry (11/4/23)*
Vacant (11/4/24)
Lindsey Williams (11/4/25)

Durham

Wayne Burton (4/30/24)*
Wesley Merritt (4/30/26)
Leslie Schwartz (4/30/25)

Farmington

William Fisher (1/1/2023)*
Randy Orvis (3/31/2025)

Lee

Katrin Kasper (11/21/2024)*
Dawn Genes (3/1/2026)

Madbury

Mark Avery (3/1/2025)
Thomas Crosby (9/1/2026)*

Middleton

Jan Hotchkiss (5/28/2023)
Jon Hotchkiss (5/28/2025)

Milton

Larry Brown (12/9/2022)
Karen Golab (3/13/2024)

New Durham

Vacant (6/28/2023)
Vacant (10/28/2025)

Newmarket

Lisa Henderson (12/7/24)
Peter Nelson (3/1/2025)*

Northwood

Scott Martin (4/30/25)
Vacant (4/30/23)

Nottingham

Gary Anderson (5/13/26)
Charlene Andersen (2/1/24)

Rochester

Barbara Holstein (6/6/23)*
Vacant (6/6/24)
Donald Hamann (6/30/25)*
Joe Boudreau (6/30/26)

Rollinsford

Herb Ueda (4/21/25)
Vacant (4/21/23)

Somersworth

Michael Bobinsky (5/2/24)*
Mark Richardson (5/31/25)
Vacant (5/2/26)

Strafford

Donald Coker (8/15/25)
Vacant (8/1/23)

Wakefield

Victor Vinagro (8/1/2024)
Vacant (8/1/2026)

***Denotes E.C. Member**

Staff Directory



Jennifer Czysz, AICP, Executive Director

May 2018– Present Email: jczysz@strafford.org

Phone EXT: 100

Projects Areas: Organizational development and financial management; community development; land use, transportation, economic development, housing, and natural resources planning

Current Projects: Financial and administrative management of SRPC, SMPO and SEDD contracts; personnel; partnership building; represent SRPC at the COAST Finance Committee, Seacoast Drinking Water Commission, Commission to Study Offshore Wind and Port Development, and Coastal Resilience and Cultural and Historic Reserve District Commission; represent the 9 NH Regional Planning Commissions at NH Housing and Community Development Planning Council, and the NH Council on Housing Stability's Regional Leadership and Coordination workgroup (co-chair).



Kyle Pimental, Principal Regional Planner

June 2008 – Present Email: kpimental@strafford.org

Phone EXT: 101

Projects Areas: Climate adaptation and resilience planning, hazard mitigation, natural resource management and protection, master planning, as well as the contract planner for the Town of Farmington

Current Projects: Contract planner for the Town of Farmington; aquifer protection overlay district and floodplain ordinance updates in Rollinsford; hazard mitigation plan update and technical assistance with a cost-benefit analysis in Durham; accessory dwelling unit updates in New Durham; preparing several grant applications to develop a river corridor plan for the Cocheco River, a watershed management plan for Milton Three Ponds, and implement actions in the Sunrise Lake plan, as well as participation in the New Hampshire Planners Association's Executive Committee, Northern New England Chapter of the American Planning Association's Executive Committee, Coastal Adaptation Workgroup (CAW), CAW Outreach Subcommittee, CAW Talks, Climate Summit Committee, Seacoast Drinking Water Commission, Great Bay 2030 Focal Groups, and the New Hampshire Coastal Watershed Conservation Plan Advisory Committee..



Shayna Sylvia, Senior Communications and Outreach Planner

November 2012 – Present Email: ssylvia@strafford.org
Phone EXT: 104

Projects Areas: Communications, outreach, marketing, graphic design, website management, assistance with meeting planning and coordination, report writing and formatting

Current Projects: SRPC annual report, assistance with quarterly meetings, social media and outreach processes; redesign and maintenance of SRPC's website; branding and graphic design services; Communities For Healthy Aging Transitions; SRPC's bicycle and pedestrian program; outreach for SRPC's Regional Housing Needs Assessment; outreach assistance for Strafford and Barrington Master Plans; technical assistance to Explore Moose Mountains; co-manage CommuteSMART Seacoast and its advisory committee; participation in CommuteSmart NH; social media coordinator on the NH Planners Association executive committee, and other organizational processes and communications.



Kathy Foster, Financial Manager

September 2013 – Present Email: kfoster@strafford.org
Phone EXT: 111

Responsibilities: Full charge bookkeeping, payroll processing and reporting; human resources; budget development and analysis; grant and contract financial administration and management; financial and grant reporting; indirect cost rate calculation and recovery; assistance with financial auditing.



Colin Lentz, Senior Transportation Planner

March 2014 – Present Email: clentz@strafford.org
Phone EXT: 102

Project Areas: Implementing tools for project development, assistance to public transit providers, facilitating the execution of federal- and state-funded transportation projects, crash analysis for safety improvement projects, connecting transportation and economic development, providing local transportation technical assistance, coordination with NHDOT and New Hampshire's three other MPOs.

Current Projects: Integrating performance measures, project prioritization, and regional trends into MPO planning and operations; travel demand model implementation; regional climate resilience planning; improving project development tools for municipalities; regional public transportation coordination and development; increasing outreach and engagement of regional and statewide elected officials and decision-makers.



Rachel Dewey, Senior Data Analyst

November 2015 – Present Email: rdewey@strafford.org
Phone EXT: 106

Project Areas: Transportation planning, data collection & analysis, GIS mapping, IT

Current Projects: Data collection & analysis; travel demand modeling; Regional Data Snapshot; Regional Housing Needs Assessment; Planning For Performance NH; SRPC website maintenance.



James Burdin, Senior Economic Development Planner

January 2017 – Present Email: jburdin@strafford.org
Phone EXT: 103

Project Areas: Economic development, land use planning, zoning, master planning, Brownfields, developments of regional impact

Current Projects: Seacoast Economic Development Stakeholders; Comprehensive Economic Development Strategy; SRPC Brownfields assessment program; contract planner for the Town of Northwood; planning and economic development technical assistance.



Jackson Rand, GIS Planner

September 2019 – Present Email: jrand@strafford.org
Phone EXT: 301

Project Areas: Transportation planning; data collection & analysis; GIS mapping

Current Projects: Data visualization for SRPC's transportation, land use, environmental planning, and economic development planning programs; Technical assistance to communities through GIS mapping and spatial analysis; Lee trail mapping; Various Annual Tax Map Updates.



Stephen Geis, Planning Technician

June 2019 – Present Email: sgeis@strafford.org

Phone EXT: 112

Project Areas: Transportation planning; data collection & analysis; GIS mapping

Current Projects: Data visualization for SRPC's transportation, land use, environmental planning, and economic development planning programs; Technical assistance to communities through GIS mapping and spatial analysis; Lee trail mapping; Various Annual Tax Map Updates.



Natalie Gemma, Economic Recovery Coordinator

November 2020 – Present Email: nmoles@strafford.org

Phone EXT: 113

Project Areas: Economic Development, Regional Planning

Current Projects: Strafford Economic Development District processes, Comprehensive Economic Development Strategy, Seacoast Economy Calls, community outreach and engagement with a focus on local business support, provision of technical assistance to member municipalities and businesses, Consultant Technical Assistance Program, Municipal Record Digitization Project, Regional Housing Needs Assessment.

Staff News

New Staff

The following staff were hired in 2022: Blair Haney (principal regional planner), Sarah Tazziz (record digitization intern), Aidan Toth (record digitization intern), Jackson Shiebler (record digitization intern), Tyler Distefano (record digitization intern), Jane Tuttle (temporary records digitization assistant), Jenny Duong (municipal record digitization assistant), and Adam Salamone (municipal record digitization assistant).

Promotions

Shayna Sylvia and Rachel Dewey were promoted to senior staff members.

SRPC Alumni

The following staff vacated their positions in 2022, Alaina Rogers (environmental planner), Nancy O'Connor (equity and engagement planner), Sarah Tazziz (record digitization intern), Aidan Toth (record digitization intern), Jackson Shiebler (record digitization intern), Tyler Distefano (record digitization intern), Jane Tuttle (temporary records digitization assistant), and Zuzana Duffy (assistant planner).



Mark Davie, Data Collection Intern

May 2021 – Present Email: mdavie@strafford.org

Phone EXT: 114

Project Areas: Transportation planning, data collection & analysis, GIS mapping

Current Projects: Annual data collection rotation, including traffic counts, bicycle and pedestrian counts, pavement assessments (RSMS), building permit records, and field activities. Regional Housing Needs Assessment (RHNA). Sourcewater protection zoning audits. Accessory Dwelling Unit (ADU) zoning audit. Local master plans. MPO project prioritization and outreach.



Autumn Scott, Regional Planner

May 2021 – Present Email: ascott@strafford.org

Phone EXT: 114

Project Areas: Regional planning, environmental and land use planning climate adaptation and resilience, public health, food systems, stormwater, master planning, equity and engagement, contract planning services for Strafford Zoning Board

Current Projects: Staff coordinator for the Resiliency Subcommittee, Contract Planner for Strafford Zoning Board, Communities for Healthy Aging Transitions (CHAT), floodplain ordinance updates in Madbury, aquifer protection district updates in several communities, Strafford Master Plan update, assisting preparation of several grant applications to develop a river corridor plan for the Cocheco River, a watershed management plan for Milton Three Ponds, and implement actions in the Sunrise Lake plan, New Hampshire CoastWise participant.



Megan Taylor-Fetter, Office Coordinator

June 2021 – Present Email: mtaylorfetter@strafford.org

Phone EXT: 115

Project Areas: Office administration

Current Projects: Payroll and HR, assist with meeting coordination for the Executive Committee, Commission, Policy Committee and TAC. Committee volunteer roster updates and recruitment. Staff recruitment and scheduling for the records digitization project, town reports and other organizational processes.



Blair Haney, Regional Planner

September 2021 – Present Email: bhaney@strafford.org

Project Areas: Hazard mitigation planning, circuit riding, and other land use planning activities

Current Projects: Contract planning services for Nottingham and Strafford Planning Boards, Barrington Future Land Use Master Plan chapter, and Community Development Block Grant administration,

Staff Fun



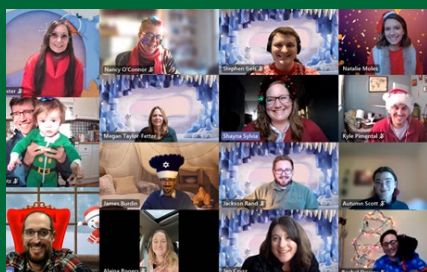
Fall Farm Day

SRPC staff gathered at DeMerritt Hill Farm in Lee in Oct. 2021.



Staff Picnic

SRPC staffers enjoyed a day in the sun at Ellacoya State Park in Aug. 2022.



Secret Santa

In carrying out the tradition, SRPC staff took part in Secret Santa, virtually, and donned their festive looks for the annual holiday card photo.

THIS PAGE IS INTENTIONALLY
LEFT BLANK

Project/ Program Name	Type					Geography	Funder	Project Dates	Project Area			Project Staff																
	Service	Project	Map	Plan	Collaboration				SRPC	SMPO	SEDD	Alaina R.	Autumn S.	Blair H.	Colin L.	Interns	Jackson R.	James B.	Jen C.	Kathy F.	Kyle P.	Mark D.	Megan T. F.	Nancy O'C.	Natalie G.	Rachel D.	Shayna S.	Stephen G.
Economic Development District Program	x					Regional	EDA	7/1/2021-6/30/2024			x	x																
Comprehensive Economic Development Strategy				x		Regional	EDA	1/1/2022-6/17/2022			x				x				x		x	x	x	x	x	x		x
Explore Moose Mountains					x	Regional (Brookfield, Farmington, New Durham, Middleton, Milton, Wakefield, Wolfeboro)	EDA	11/1/2014-present			x														x			
Hazard Mitigation Plans	x			x		Barrington, New Durham, Rollinsford, Somersworth	NH HSEM	1/22/2021-5/29/2023	x						x	x			x								x	
Barrington Hazard Mitigation Plan				x		Barrington	NH HSEM	1/22/2021-present							x													
New Durham Hazard Mitigation Plan				x		New Durham	NH HSEM	1/22/2021-6/30/2022	x						x	x											x	
Rollinsford Hazard Mitigation Plan				x		Rollinsford	NH HSEM	1/22/2021-6/30/2022	x						x				x									
Somersworth Hazard Mitigation Plan				x		Somersworth	NH HSEM	1/22/2021-6/30/2022	x						x	x											x	

Project/ Program Name	Type					Geography	Funder	Project Dates	Project Area			Project Staff																
	Service	Project	Map	Plan	Collaboration				SRPC	SMPO	SEDD	Alaina R.	Autumn S.	Blair H.	Colin L.	Interns	Jackson R.	James B.	Jen C.	Kathy F.	Kyle P.	Mark D.	Megan T. F.	Nancy O'C.	Natalie G.	Rachel D.	Shayna S.	Stephen G.
Local Sourcwater Protections Program	x	x				Milton and Rollinsford	NHDES Local Sourcwater Protection Program	4/1/2021-5/31/2022					x						x						x			
Milton Stormwater Regulation Updates	x	x				Milton	NHDES Local Sourcwater Protection Program	4/1/2021-5/31/2022	x				x						x									
Rollinsford Stormwater Regulation Updates	x	x				Rollinsford	NHDES Local Sourcwater Protection Program	4/1/2021-5/31/2022	x				x						x						x			
NHARPC Administration	x				x	Statewide	NHARPC	7/1/2021-6/30/2022	x							x				x								
NH Geodata Portal			x			Statewide	NH Division of Information Technology	8/31/2020-5/31/2022	x	x	x	x			x										x			
NHDES Coastal Program Technical Assitance Grant	x	x				Coastal	NHDES Coastal Program	7/1/2021-6/30/2022	x				x						x									
Dover CIP Planning	x	x				Dover	NHDES Coastal Program	3/1/2022-6/6/2022	x										x									
Shoreline Resilience Tour		x				Coastal	NHDES Coastal Program	3/1/2022-6/22/2022	x				x						x									
Dover Climate Resources Forum		x				Dover	NHDES Coastal Program	1/1/2022-4/7/2022	x										x									
Coastal Adaptation Workgroup Outreach	x				x	Regional	NHDES Coastal Program	7/1/2021-6/30/2022	x				x						x									

Project/ Program Name	Type					Geography	Funder	Project Dates	Project Area			Project Staff																		
	Service	Project	Map	Plan	Collaboration				SRPC	SMPO	SEDD	Alaina R.	Autumn S.	Blair H.	Colin L.	Interns	Jackson R.	James B.	Jen C.	Kathy F.	Kyle P.	Mark D.	Megan T. F.	Nancy O'C.	Natalie G.	Rachel D.	Shayna S.	Stephen G.	Tyler D.	Zuzana D.
Northern Borders Regional Commission (NBRC) Community Improvement Grants						See towns below	Northern Borders Regional Commission	See dates below			x																			
Sanbornville Precinct Grant Administration	x					Wakefield		3/1/2021-9/30/2023				x																		
Wakefield NBRC Union Hotel Grant Administration	x					Wakefield		12/1/2021-9/30/2024				x																		
Office of Planning and Development		x				Regional	NH Office of Planning and Development	See dates below																						
Regional Housing Needs Assessment		x				Regional	NH Office of Planning and Development via ARPA	9/15/2021-12/31/2022	x		x				x		x			x		x	x	x	x					
Target Block Grant FY 22		x				Regional	NH Office of Planning and Development	7/1/2021-6/30/2022	x						x	x		x				x			x					
PREP Environmental Planning Assessment Grant						New Durham, Dover	Piscataqua Regional Estuaries Partnership Environmental Planning Assessment Grant	See dates below																						
New Durham Environmental Overlay District Revisions	x	x				New Durham		6/7/2021-9/1/2022	x			x				x		x								x				
Dover Wetland Ordinance Revisions	x	x				Dover		6/7/2021 - 6/1/2022	x							x														

Project/ Program Name	Type					Geography	Funder	Project Dates	Project Area			Project Staff																
	Service	Project	Map	Plan	Collaboration				SRPC	SMPO	SEDD	Alaina R.	Autumn S.	Blair H.	Colin L.	Interns	Jackson R.	James B.	Jen C.	Kathy F.	Kyle P.	Mark D.	Megan T. F.	Nancy O'C.	Natalie G.	Rachel D.	Shayna S.	Stephen G.
Promoting Outdoor Play!		x	x			Regional	NH Children's Health Foundation	7/1/2020-6/30/2022	x						x		x			x		x			x	x		
Resilient Land Use Guide for NH (formerly Coastal Innovative Land Use Guide)		x				Inter-Regional	NHDES	3/1/2021-6/30/2022	x									x							x			
Scaling Up Living Shorelines for Great Bay		x				Coastal	NFWF	4/1/2021-5/31/2022	x										x									x
Sunrise Lake Watershed Management Plan		x				Middleton	NHDES	6/24/2020-12/31/2021	x						x				x									
Tax Maps	x		x			Various Municipalities	Various Municipalities	See dates below	x						x											x		
Farmington Tax Map Update	x		x			Farmington	Farmington	8/5/2021-12/31/2021	x						x											x		
Newmarket Tax Map Update	x		x			Newmarket	Newmarket	6/17/2021-12/31/2021	x						x											x		
Somersworth Tax Map Update	x		x			Somersworth	Somersworth	4/10/2021-12/31/2021	x						x											x		
Strafford Tax Map Update	x		x			Strafford	Strafford	7/1/2021-6/30/2022	x						x											x		

Project/ Program Name	Type					Geography	Funder	Project Dates	Project Area			Project Staff																	
	Service	Project	Map	Plan	Collaboration				SRPC	SMPO	SEDD	Alaina R.	Autumn S.	Blair H.	Colin L.	Interns	Jackson R.	James B.	Jen C.	Kathy F.	Kyle P.	Mark D.	Megan T. F.	Nancy O'C.	Natalie G.	Rachel D.	Shayna S.	Stephen G.	Tyler D.
Town Planning Services	x					Various Municipalities	Various Municipalities	See dates below																					
Farmington Town Planner Services	x					Farmington	Farmington	1/1/2022-12/31/2022	x									x											
Northwood Town Planner Services	x					Northwood	Northwood	1/1/2022/-12/31/2022	x						x														
Nottingham Town Planner Services	x					Nottingham	Nottingham	7/1/2021 - 6/30/2022	x						x	x													
Strafford Town Planner Services	x					Strafford	Strafford	1/1/2022 -12/31/2022	x			x	x									x							
Wakefield Town Planner Services	x					Wakefield	Wakefield	1/1/2022 - 12/31/2022	x			x				x													
UNH Path to Resilience		x				Durham	National League of Cities	7/1/2021-12/31/2021			x		x	x				x											
Unified Planning Working Program 2022-2023	x					Regional	NHDOT, FHWA	7/1/2021-6/30/2023																					
Annual Listing of Obligated Projects	x					Regional		10/1/2021-12/31/2021		x			x																
2022 Traffic Counts	x					Regional		5/1/2022-9/30/2022		x			x	x					x					x	x				
Bike/Ped Counts	x			x		Regional		5/1/2022-9/30/2022		x			x							x						x			
Regional Data Snapshot	x			x		Regional		07/01/2021-6/30/2022	x	x	x				x					x				x		x			

Project/ Program Name	Type					Geography	Funder	Project Dates	Project Area			Project Staff																	
	Service	Project	Map	Plan	Collaboration				SRPC	SMPO	SEDD	Alaina R.	Autumn S.	Blair H.	Colin L.	Interns	Jackson R.	James B.	Jen C.	Kathy F.	Kyle P.	Mark D.	Megan T. F.	Nancy O'C.	Natalie G.	Rachel D.	Shayna S.	Stephen G.	Tyler D.
Unified Planning Working Program 2022-2023 cont.																													
Metro Plan Update and project sollicitation	x			x		Regional	NHDOT, FHWA	7/1/2022-present		x					x														
Northwood RSMS	x			x		Northwood		8/1/2021-12/31/2021		x															x	x	x		
CommuteSMART Seacoast					x	Inter-Regional		2013-present		x																	x		
CommuteSmart NH					x	Statewide		Dec. 18 - present		x																x			

Engagement and Advocacy by the Numbers



13

grants and proposals were submitted in FY 2022; **8** of which were successful and amounted to **\$1.193 million** in funds for SRPC and partner organizations, including **\$950,000** in Congressionally designated funds to support SRPC and NH's **8** other RPCs to update our Regional Comprehensive Plans.



60

people incorporated in the outreach network created through SRPC's Dover Building Resilience by Building Equity project. This includes **20** workshop participants and various other interviewees, SRPC staff, project team members and stakeholders.



574

accounts created in the new CommuteSmart NH online and mobile app, due to outreach, the two statewide challenges, and SRPC assisting with importing contacts from the CommuteSMART Seacoast database.



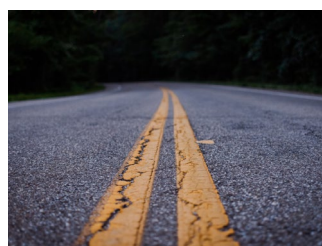
\$132,715

in Qualified Environmental Professional services that supported work at Brownfields sites within SRPC communities.



221

sites catalogued in the Arts and Culture Inventory Map Viewer



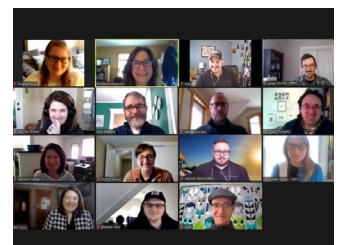
27

miles of roads assessed and prescribed treatments for in Northwood's 2021 Road Surface Management System Report.



62

videos uploaded on SRPC's YouTube Channel



15,428+

minutes spent on over **239** Zoom meetings hosted by SRPC.

Meaningful Outreach

SRPC integrates outreach and engagement with all of its projects. Gathering feedback from residents, municipal staff and volunteers, partners and other stakeholders is essential when planning for the future of the Stafford region.

Here are some examples of outreach completed in FY 2022.

Outcomes of Milton and Rollinsford Stormwater Regulation Updates

A grant from the NHDES Local Sourcewater Protection Program provided funding for SRPC, in partnership with the Towns of Milton and Rollinsford, to update local stormwater management regulations – placing a stronger emphasis on construction site and stormwater runoff control.

Recommended updates were intended to conform to minimum control measure requirements and provide support for conducting stormwater best management practices. This project provided decision-makers with necessary information and guidance to effectively regulate land uses by controlling non-point pollution from future development, mitigating, and reducing non-point and stormwater pollution, and managing the quality and quantity of surface water and groundwater sources.

To ensure that this technical information was conveyed in a way that makes sense to the public and other stakeholders, SRPC tailored its outreach to the unique needs of both Milton and Rollinsford.

In Rollinsford SRPC created three outreach flyers, two directed at Rollinsford residents and one directed uniquely at small businesses, that addressed fertilizer use, septic maintenance, and stormwater pollution, respectively.

These can be viewed on the [project webpage](#)¹.

In Milton, SRPC staff partnered with NH Sea Grant, UNH Extension, Milton's town planner, and members of the Milton Conservation Commission and



1 <https://strafford.org/projects/milton-and-rollinsford-stormwater-regulation-updates/>

Three Ponds Protective Association to host an event focused on how “What You Do On Land Affects Our Lakes and Rivers!”

This event was held on a Saturday in July at the Town Beach and was geared towards residents, who were able to visualize the effects of stormwater and run-off using a tool called an [enviroscape](#)². This interactive activity was led NH Sea Grant and was a big draw for children learning about their impacts on resources like Milton Three Ponds.

Various [outreach materials](#)³ created for the project, by other partners, were also available and prompted discussions with attendees about stormwater pollution and what residents can do to reduce pollutants to the lake (septic system maintenance, low nitrogen fertilizers, picking up pet waste, etc.).



Annual Municipal Check-Ins

In 2018, to introduce herself and begin to learn more about each SRPC community, Executive Director Jen Czysz began a yearly tradition of visiting and checking in with each regional municipality.

After a hiatus, due to the Covid-19 pandemic, Jen resumed these visits in FY 2022, and was able to visit the following communities: Durham, Farmington, Lee, Madbury, Middleton, Milton, New Durham, Rochester, Rollinsford, Somersworth, Strafford, and Wakefield.

These visits allowed Jen to share SRPC efforts of interest to each community, understand local needs, and to get input on projects, like the community assessments drafted for each municipality as part of the Communities for Healthy Aging Transitions (CHAT) project.

Jen plans to continue these check-ins in FY 2023, continuing to connect with the remaining Barrington, Newmarket, and Northwood, Nottingham, before restarting the process over again.

² <https://www.envirosapes.com/>

³ https://www.miltonnh-us.com/storm-water-management-committee-ms4/pages/keep-our-lakes-clean-how-reduce-pollution-storm-water-run?fbclid=IwAR2BBzX2zRFiLfOdIxcE_1iso5ty9xnA5e4SEBb6nhcc4JKKs2QyEYgm5xI

RHNA Outreach Tips and Tricks Subcommittee

Between December 2021 and May 2022, SRPC senior communications and outreach planner Shayna Sylvia and equity and engagement planner Nancy O'Connor participated on the Outreach Tips and Trick subcommittee for the Regional Housing Needs Assessment (RHNA) project. This subcommittee was one of nine for the RHNA project, and members were tasked with providing language and guidance for outreach and engagement strategies each RPC could adapt as they worked on their individual assessments.



Throughout the six months, representatives from multiple RPCs collaborated to create the following work products:

- Outreach matrix which listed different engagement strategies and audiences.
- A guide for engagement best practices
- Sample copy for social, e-communications, surveys & emails
- A statewide RHNA press release
- Coordination of statewide press contacts for project outreach distribution
- The creation of a statewide project webpage
- A guide for survey best practices and survey tool platform guidance
- 10 RHNA logos (one statewide, and one for each RPC)
- Sample copy that could be used to promote RHNA surveys for various outlets

SRPC took the lead in creating both the project logo and the [webpage for the project](#)⁴ on the NH Association of Regional Planning Commission's website.

Active Transportation Survey

In May 2022, Strafford Regional Planning Commission (SRPC) launched its active transportation survey to inform its plan to improve spaces for active transportation. Active Transportation includes getting around by foot, bicycle, wheelchair, rollerblades, etc. Think human power, not gas power.

The survey engaged residents, asking them about their active transportation habits, needs, barriers, challenges, and visions.

In the end, the survey garnered 247 responses with a final push with social media. SRPC was able to partner with local recreation departments to share that they survey was closing soon, and post in each municipalities' Facebook community groups. In the last four days, SRPC staff saw 146 responses.

This input will be used as SRPC drafts its first Active Transportation plan in FY 2023.

⁴ <https://www.nharpc.org/rhna/>

Webinars and Presentations

SRPC staff were able to provide expertise throughout the year at a variety of different conferences, workshops, and trainings.



Presentation to UNH Class about Planning Profession

In fall of 2021 principal regional planner Kyle Pimental and senior regional planner James Burdin were invited to present to one of Professor Mary Friedman's planning courses in the Community and Environmental Planning program at UNH.

Their presentation lasted for the entire 80 minutes class and allowed the 30 or so students who attended the chance to engage with SRPC staff on topics like public versus private interests and how to manage difficult community meetings.

“
TESTIMONIAL
”

I appreciate that I can reach out to the SRPC staff and get such enthusiastic responses – especially when it means more work for them. I reached out to Kyle, and he did not hesitate to volunteer his time. He invited James to join us, and we Zoom chatted one week before the class time. Again, they were both genuinely interested in doing the most they could for the students.

Their presentation was personal, informative, thought-provoking and relevant to these students. I could not have asked for anything more from professional planners to inspire students to be involved in this career/field.

I had two students reach out after the presentation (unsolicited) to tell me how much they enjoyed what both Kyle and James communicated about their work at SRPC. They were impressed with the work of planners but also with their work environment at SRPC.

Not only is the work meaningful and diverse, but also that you, as the director, have created a dynamic, busy, and productive space and yet a balanced and comfortable work environment. As we all seek more balance in our lives, and I believe this generation of students are going to demand it, it is wonderful to hear this as a local example. You have put together an outstanding team of planners who do great work and enjoy their work.

- Professor Mary Friedman, Program Coordinator for Community and Environmental Planning





GACIT Hearings

During the 2021 Governor's Advisory Council on Intermodal Transportation (GACIT) period, executive director Jen Czysz and senior transportation planner Colin Lentz attended hearings in Dover and Somersworth.

GACIT holds public hearings every two years so that members of the public and stakeholders can share input and express priorities for the New Hampshire Department of Transportation's draft statewide Ten Year Plan Transportation Improvement Plan.

At these hearings, Colin submitted a letter prepared by SRPC with guidance from its Policy Committee, in addition to giving a presentation outlining regional transportation priorities. SRPC's participation in this process was in an advocacy role, as the information championed supports projects that are slated to occur regionally.

Community Conservation Cohort Presentation

In Oct. 2021 principal regional planner Kyle Pimental was invited to present at a peer-to-peer learning session for conservation commission members across the state.

He provided details on overlay districts including their purpose and how they work, explained the difference between setbacks and buffers and how this is used as a zoning tool, and explained open space subdivisions.

Kyle was invited back and will be refreshing conservation commission members on these topics and more at the 2022 Community Conservation Cohort event.

NHPA Annual Meeting

Senior communications and outreach planner, Shayna Sylvia, and GIS planner Jackson Rand presented on the [Pathways to Play \(PTP\)](#)⁵ and [Promoting Outdoor Play! project \(POP\)](#)⁶ at the NH Planners Association (NHPA) Annual Meeting in December 2021.

SRPC was invited to present in their role as recipient of the 2020 NHPA Plan of the Year for the ["Pathways to Play: A Roadmap to Active Recreation – 2019 Somersworth Pilot Project Report"](#)⁷.



5 <https://strafford.org/projects/pathways-to-play/>

6 <https://strafford.org/projects/promoting-outdoor-play/>

7 <http://strafford.org/cmsAdmin/uploads/recreation/FINALPathwaysToPlaySOMPilotProjectReport.pdf>

Shayna and Jackson provided an overview the PTP project for meeting attendees before explaining how SRPC received additional funding for phase II of the project, POP! They also explained the process SRPC used to create the online map viewer and the extensive outreach program that SRPC embarked on to promote the resource.



VPI/Volpe Feature

In July of 2021, SRPC was invited to feature work in the virtual public involvement space as part of a FHWA/Volpe Virtual Public Involvement (VPI) peer exchange session that occurred on July 20, 2021. In the [recorded segment](#)⁸ that was broadcast at one of the session meetings, senior communication and outreach planner Shayna Sylvia detailed how SRPC used VPI for its Communities for Healthy Aging Transitions (CHAT) Project to solicit feedback on transportation and other areas as aligned with the AARP livability domains.

FHWA’s “VPI in the Pandemic: MPO Practices” webinar - VPI Initiatives at Strafford Regional Planning Commission

Senior communications and outreach planner Shayna Sylvia presented on “VPI Initiatives at Strafford Regional Planning Commission” at FHWA’s “VPI in the Pandemic: MPO Practices” webinar in February 2022.

This webinar was one in a series facilitated by FHWA and its partners at the VOLPE Center. Shayna presented a series of case studies highlighting Strafford MPO’s use of virtual engagement tools for its Communities for Healthy Aging Transitions (CHAT) project, ArcOnline Mapping Tutorial, and Active Transportation program. She followed up with strategies including having a strong and branded web and social media presence and Strafford MPO’s use of its OWL camera to allow for hybrid meetings.



OPD Planning Lunches at Noon | EngAGEing Communities in Planning for All: An Update on Age-Friendly Work Across the State

In June 2022, SRPC joined colleagues from RPCs across the state to provide update on age-friendly work being competed in various phases across the state,

Senior communications and outreach planner Shayna Sylvia presented on SRPC’s Communities for Healthy Aging Transitions (CHAT), detailing the community assessment phase staff were currently finalizing.

⁸ <https://studio.youtube.com/video/-HbiXX4kQGI/edit>



SRPC Meetings

Resiliency Roundtables

Throughout the year SRPC held four Resiliency Roundtables, a series that has been an outcome of the SRPC's resiliency subcommittee. This group is made up of dedicated SRPC commissioners who in this role have the opportunity to focus on the topic of resiliency in our communities, how can we prepare better for unforeseen events and how we can be more prepared to face future challenges.

The four roundtables included:

- July 2021: Drought – guest speakers Annie Ropeik NH Public Radio; Ted Diers, NH Department of Environmental Services. [View recording](#)⁹.
- December 2021: Flood and Water Management – guest speakers Rayann Dionne, Flood Mitigation and Resilience Specialist, NH Department of Environmental Services; Bill Boulanger, Dover Community Services. [View recording](#)¹⁰.
- February 2022: Energy – guest speakers Sam Evans Brown from CleanEnergy NH and Bill Baber from Dover Energy Commission. [View recording](#)¹¹.
- June 2022: Resiliency in Local Food Systems – guest speakers Jeremy Lougee from the Southeast Land Trust, Allison Leach from the UNH Sustainability Institute, and Erin Hale from the NH Food Alliance. [View recording](#)¹².



EV Charging Panel Discussion

At its June 2022 Technical Advisory Committee (TAC) meeting, Strafford Metropolitan Planning Organization (MPO) staff hosted three panelists to discuss Electric Vehicle (EV) charging from both a local and regional perspective.

Senior transportation planner Colin Lentz facilitated the conversation, engaging with the following panelists:

- Jack Lannamann – member of the Durham Energy

9 https://www.youtube.com/watch?v=Mks5hIum2n0&list=PLZZAk5awLrduFPaYl6t_6tZQchnwv_xGZ
10 <https://www.youtube.com/watch?v=ehKYvtFw6nk>

11 https://www.youtube.com/watch?v=w2bW6tq_5sU&list=PLZZAk5awLrduFPaYl6t_6tZQchnwv_xGZ&index=3

12 <https://youtu.be/orsyfmKgqlE>

Committee who has direct experience with the operation of Durham's public chargers.

- Jackson Kaspari – Dover's Resilience Coordinator who's spearheading local sustainability projects including EV charging.
- Karina Graeter - Sustainability Coordinator with Southern Maine Planning & Development Commission, who works with municipalities to develop local climate and resiliency plans, including a Municipal Electric Vehicle Readiness Toolkit.

This meeting was recorded, and the video can be viewed on [SRPC's YouTube channel](#)¹³.

Stormwater, Flooding, and Community Preparedness - SRPC December 2021 Commission Meeting

SRPC held its December Commission meeting on Thursday, Dec. 2. Guest presenters Rayann Dionne (Flood Mitigation and Resilience Specialist, NHDES) and Bill Boulanger (Deputy Director, Dover Community Services) discussed stormwater, flooding, and community preparedness, and how SRPC's communities can be more resilient. They also discussed flood mitigation funding and spoke about innovative solutions already underway in the region.

View the video on [SRPC's YouTube channel](#)¹⁴.

The Importance of Creative Placemaking and Public Art in Our Communities - SRPC 2022 Annual Meeting

For SRPC's return to its in-person annual meeting, staff invited presenters to discuss public art and placemaking. This session was moderated by senior communications and outreach planner Shayna Sylvia and included a three-session panel with presenters Chris Archer (Institute of Art & Design at New England College), Donna Benton (City of Dover, NH) and Matt Wyatt (City of Rochester).

The panelists shared information on what constitutes public art and the importance to be placed on the message the art is conveying, the notion that there is not a one-size-fits-all approach, what types of creative placemaking are happening and planned for Rochester and Dover, and the importance of equity and accessibility.

The meeting can be viewed on [SRPC's YouTube channel](#)¹⁵.

13 <https://youtu.be/JWx7WvziNuc>

14 <https://www.youtube.com/watch?v=ehKYvtFw6nk&list=PLZZAk5awLrtdGGjIVsIKiRPQOfOmYIn7j&index=3>

15 <https://youtu.be/ACt7nLnyoE8>

PLANS Spotlight: Sunrise Lake Watershed Management Plan

The Sunrise Lake Watershed Management plan was completed between June 2020 and December 2021 as a joint effort between the Town of Middleton, the University of New Hampshire Stormwater Center, Geosyntec, and the DK Water Resource Consulting.

The “Sunrise Lake Watershed Management Plan” describes water quality conditions, watershed characteristics, and sources of phosphorus loading to Sunrise Lake; plus, identifies actions to improve the lake’s water quality. The plan establishes water quality goals, outlines nutrient management approaches, and describes management actions for meeting water quality improvement goals.

The plan also summarizes previous studies, water quality data, watershed survey information, and phosphorus loading modeling output. The plan incorporates this information into actions and recommendations for reducing pollutant loading to the lake.

The goals of the Sunrise Lake Watershed Management Plan include:

- Identifying and quantifying sources of phosphorus loading to the lake
- Establishing a water quality goal for the lake
- Identifying management actions to reduce phosphorus loading

The adaptive management approach described in the plan enables project partners to conduct restoration activities in a responsive manner; however, the plan recognizes that improvements in water quality cannot be achieved with a single restoration action or within an immediate timeframe. Implementation of this pro-active approach ensures that as management activities are conducted, water quality response is monitored, and success is documented.

The town is interested in seeking additional funding to implement some of the recommendations from the plan.



As a lakeside resident of Sunrise Lake, I was very pleased to learn of the development and implementation of the newly released Sunrise Lake Watershed Management Plan. I participated in the plan as a representative of the Hampshire Shores Association and was pleased with the work done by Strafford Regional Planning Commission, the consultants, and UNH. The implementation of this plan will give the residents of Sunrise Lake and starting point in which to reveal our lake’s health and the actions needed to improve its quality.

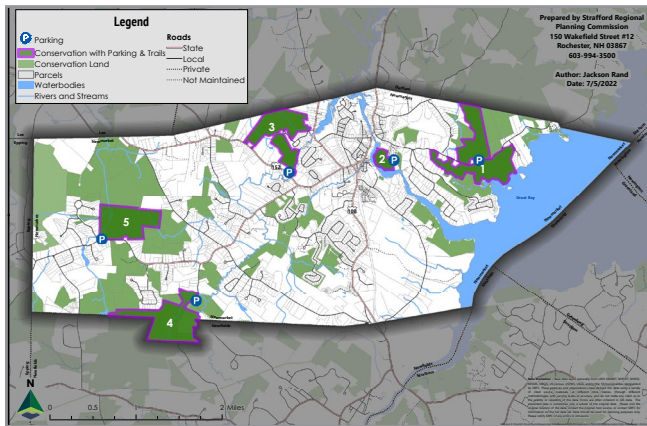
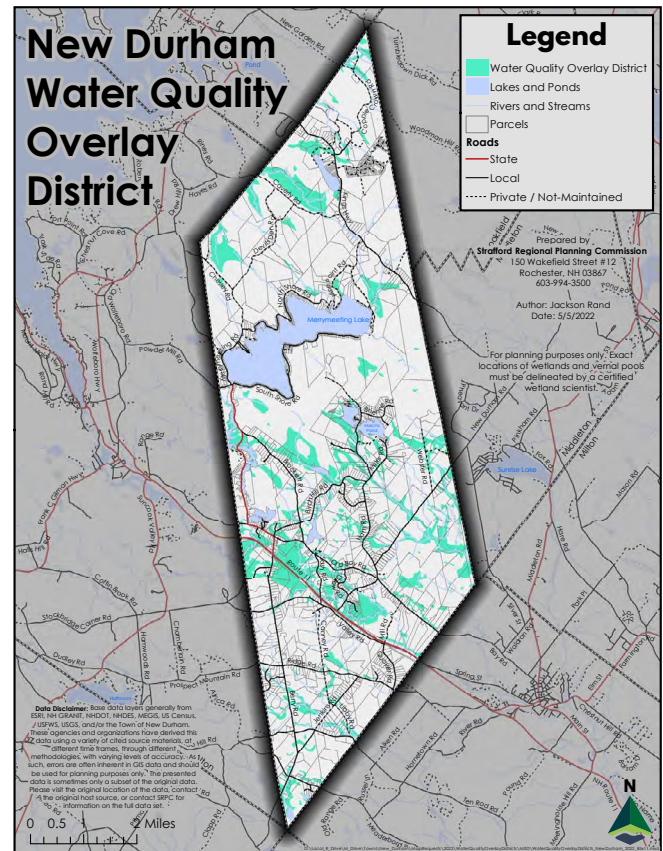
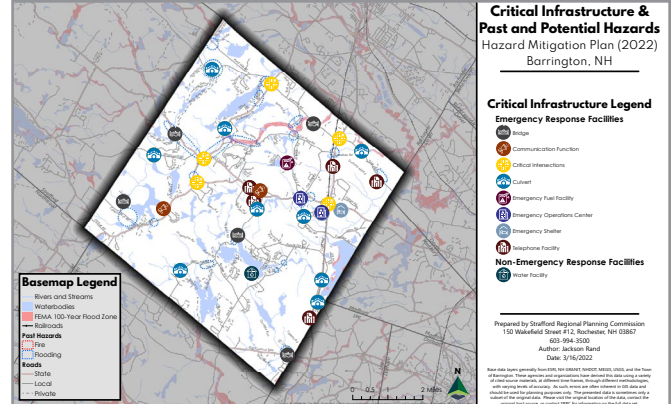
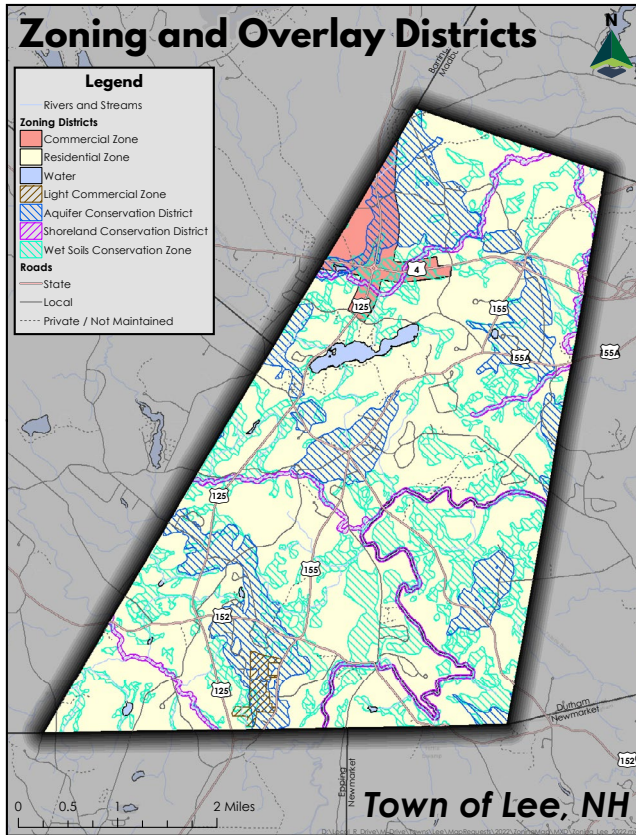
-John Mullen, Sunrise Lake Resident



TESTIMONIAL



GIS Highlights



At the close of the 2022 fiscal year, [SRPC's ArcOnline site](https://srpc.maps.arcgis.com/home/index.html)¹⁶ hosted:

13

interactive maps

3

web apps

3

dashboards

3

storymaps

¹⁶ <https://srpc.maps.arcgis.com/home/index.html>

In the 2022 fiscal year, site traffic was as follows:

18,703

views on the
Tax Parcel
Viewer

9,193

views on the
Open Data
Portal

4,483

views on the
Promoting
Outdoor Play!
map viewer
(learn more on
pg. 25)

591

views on all
eight of SRPC's
standard maps
combined

1,443

views on
all SRPC
storymaps
combined

333

combined
views on
all SRPC
dashboards.

209

views on the
data snapshot
web app

SRPC's New and Updated Standard Map Set

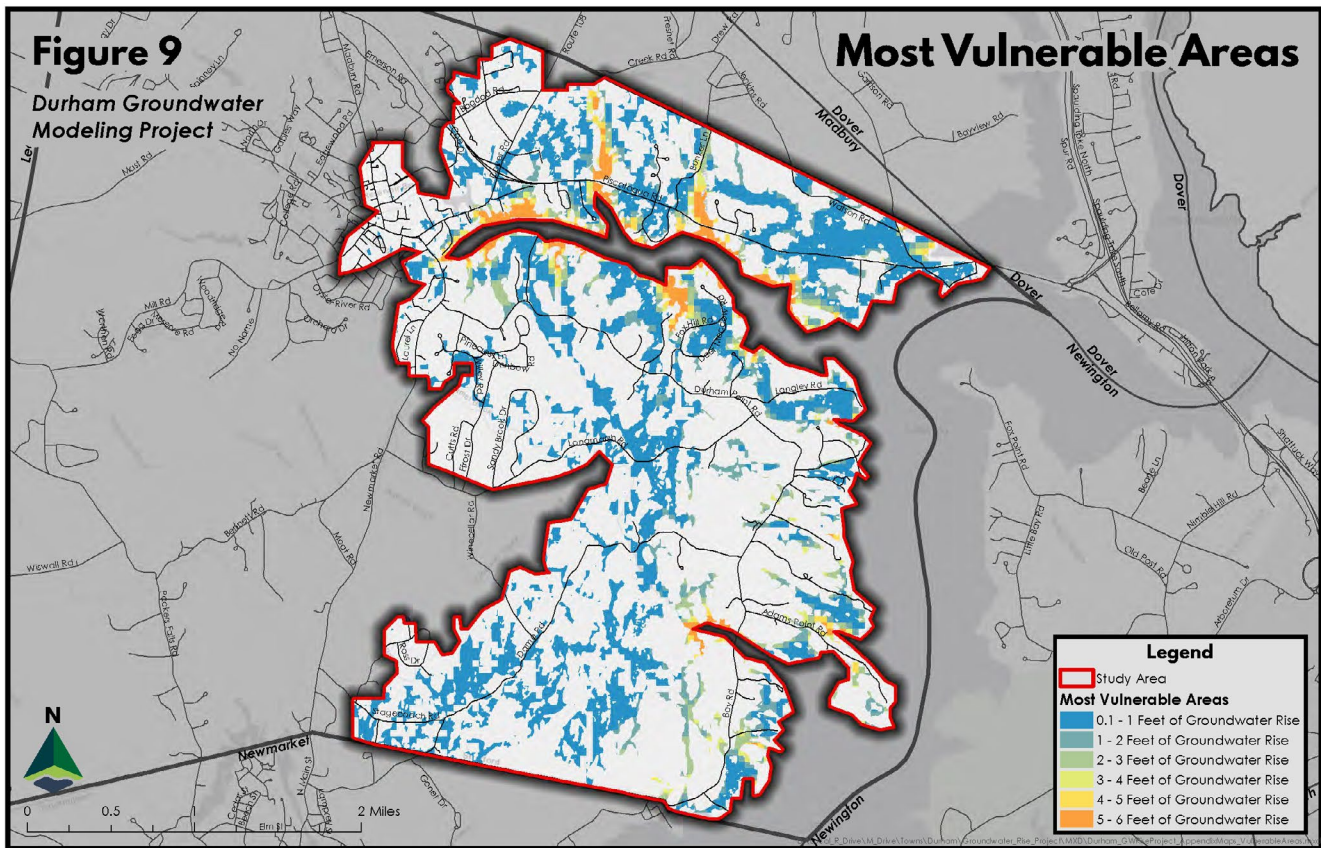
In conjunction with the new SRPC website, SRPC updated all existing standard maps with its new branding. These standard maps have also been updated to reflect updated data sets.

Additionally, two new standard maps were added to the set: USGS Topography and Watersheds. All standard maps can be found on the [SRPC's website](http://straftford.org/reference/map-gallery/?_sf_s=standard%20map)¹ and [ArcOnline site](https://srpc.maps.arcgis.com/home/index.html)².

¹ http://straftford.org/reference/map-gallery/?_sf_s=standard%20map

² <https://srpc.maps.arcgis.com/home/index.html>

MAPS Spotlight: Durham Groundwater



In February 2022, SRPC, in partnership with UNH, JFK Environmental Services LLC, and the Town of Durham, completed a project in Durham to map and model assets that may be impacted by future groundwater rise. Assets that were assessed in this study included roads, septic systems, wells, municipal critical facilities, water and sewer pipes, and stormwater infrastructure. These assets, along with modeled groundwater rise data for a variety of future sea level rise scenarios, were used together in a vulnerability analysis to determine which assets in Town could be the most susceptible to future groundwater rise as a result of sea level rise.

[The project](#)¹⁷ resulted in a series of maps showing current depth to groundwater, modeled groundwater rise under a variety of future sea level rise scenarios, areas in Town that will be most susceptible to future groundwater rise, and all of the assets that may be impacted by future groundwater rise.

This series of maps was created by GIS planner Jackson Rand with assistance from principal regional planner Kyle Pimental.

Town of Durham staff and the project steering committee played an important role in developing the methodology used for this vulnerability analysis.

¹⁷ <https://strafford.org/projects/durham-groundwater-rise-modeling/>

PROJECTS Spotlight: Dover Building Resilience by Building Equity

The primary goal of the “Dover Building Resilience by Building Equity” project, which took place between Dec. 2020 and Jun. 2022, was to engage the City’s historically underserved communities (HUCs) in climate change conversations, as they are often disproportionately vulnerable to climate change impacts. Such impacts were identified as sea level rise, coastal flooding, freshwater availability, and urban heat island effects.

The project, which was funded through a Resilience Municipal Planning Grant, was visualized through many important partnerships which allowed for a collaborative approach to achieving its goals. SRPC staff worked with the NH Coastal Program, Allgood Strategies, the City of Dover, and UNH Cooperative Extension.

In its early phases, project staff focused on identifying vulnerable populations and connecting with them through entities that provide services to these groups. This was done with a goal of hearing important historical and current experiences and perspectives, to later be incorporated into ongoing climate change planning efforts.

In beginning outreach and engagement, it was important that the project team had a baseline understanding of equity and was prepared for engaging HUCs without biases. In response, SRPC staff invited Erin Allgood of Allgood Strategies to facilitate a training on frontline community engagement, justice, equity, diversity, and inclusion.

When it came time to engage Dover residents, SRPC staff planned its outreach in a cyclical manner, so that they would be coming back to show participants that they had heard them and ask them how to then prioritize outcomes from their earlier conversations. SRPC staff also made sure to incentivize participation so that participants felt their time and input was valued, and to connect in ways that would work best for the targeted populations, for example, relating via stories of extreme weather events versus discussing data and technical aspects of climate change. When returning to these groups, SRPC staff brought back 11 recommendations and asked for final input from the groups.

This project created an important framework that can and should be replicated in all other planning projects and will allow the City of Dover to integrate the network built into other city process and planning efforts.



SERVICES Spotlight: COVID-19 Recovery

In 2020, SRPC received a CARES Act grant from the US Economic Development Administration (EDA) designated to support economic recovery and resiliency planning and to provide technical assistance to communities, businesses and other organizations impacted by the Covid-19 pandemic and within SRPC's service area.

As a result of this funding opportunity, SRPC was able to hire an Economic Recovery Coordinator to facilitate these efforts and carry out recovery projects and initiatives. Through economic recovery and resilience planning, SRPC focused on both short-term and long-term efforts that strive to expedite the economic recovery and integrate disaster recovery planning into future plans by working with various stakeholders and conducting important outreach and research. This helped SRPC to better understand local needs and improve awareness of available funding opportunities, disseminate federal, state, and local resources to small businesses, and help foster new partnerships in order to support the recovery process.

COVID Recovery Funding Opportunities

In response to the rapidly changing information that came as a consequence of the pandemic, SRPC has been actively engaged in outreach and research efforts to compile various up-to-date opportunities for small businesses owners, including but not limited to funding opportunities and tools to support business operations and capacity building.

These resources are disseminated to a list of all registered businesses in the SRPC geographical region via e-mail. These [e-mails](#)¹⁸, which also include the latest updates on federal, state, and local funding opportunities that have been rolled out in an effort to help businesses with the economic impacts of Covid-19, are sent out roughly once a month.

In FY 2022:

9

e-communications
were sent out.

Municipal Record Digitization

In Jan. 2022, SRPC launched its municipal record digitization project to assist its municipalities with improving organizational resilience, increase efficiency for municipal staff required to work remotely, and to increase citizen access online.

¹⁸ <https://strafford.org/services/covid-recovery-funding-opportunities/>

The program is offered at no cost to SRPC's regional municipalities and was facilitated by SRPC staff who setup the scanning equipment at each municipality, where it remained for a period of 2 to 4 consecutive weeks. The process of scanning the documents was carried out with the support of SRPC staff members, interns, and municipal staff members on weekdays during office hours. Cooperation and assistance from municipal staff made the scanning more efficient while also enabling them to receive training on how to do the scanning themselves, as after the program end in September 2022, the equipment will remain available for municipalities to borrow.

14

communities signed up for assistance through this SRPC program.

8

The total interns **(4)**, plus part-time **(3)** and full-time employees **(1)** hired to assist with planning.

~11,000

PDFs created from scanning documents.

14

municipalities visited as of September 7, 2022.

TESTIMONIALS

It was a pleasure to work with the SRPC staff and interns to help digitize some of the Newmarket Conservation Commission files. Having a digital record of the Commission's meetings and activities is a valuable historical record of caring for our town conservation areas, parks, wetlands, trails, and other community conservation values. Thanks for providing this service.

- Wendy Chase and Ellen Snyder, Town of Newmarket

The City of Somersworth was able to partner with Strafford Regional Planning Commission to use CARES Act funding for Covid recovery to digitize large Planning files: Site Plan and Subdivisions. The staff at SRPC was professional and efficient in scanning records for various Departments within the City. This project will help to increase searchability of files, efficiency within the Department, easier access to documents, transparency with the public, and prevent file loss. We are thankful for all the work that the team at SRPC did over the four-week period.

- Michelle Mears, City of Somersworth

The Strafford Regional Planning Commission interns help to scan and digitize some old paper tax cards that we had. The interns were very professional and efficient. I was truly grateful for their help in getting this project completed for me!

- Karen Edwards, Town of Durham

Community Technical Assistance Program

SRPC launched its Consultant Technical Assistance (CTA) program with the CARES Act funding to support small businesses as they work to recover from the impacts of Covid-19.

To provide services, SRPC partnered with private consultants to make free technical support (up to nine hours per business) available to small businesses in the following areas: website development, marketing and advertising, graphic design, audio visual support, generic IT services and cybersecurity.

5

consultants partnered with SRPC to provide businesses with technical assistance. The consultants included ANS Networking, Goode Cybersecurity, Open the Door Biz, Savoir Faire, and Peerless AV.

6

different technical assistance categories, with marketing, advertising, and web development being the most popular.

67

businesses were assisted in **15** out of SRPC's **18** communities.

277

hours of assistance provided, totaling **\$32,000** in services provided to businesses at no cost to them.

“

Words cannot express my appreciation to the Strafford Regional Planning Commission for their care and concern about my small wholesale distribution business. I wanted to help my country in its PPE need, but it was quite overwhelming. Their assistance was top rate, and thanks to Savoir Faire, the website designer, I feel as though I have a new lease on my business's life. My emoji should show praying hands for the gratitude I feel.

- New England Niche Wholesalers, LLC

We work with seniors who suffer from dementia helping them and their families with the red tape that is Medicaid. Record storage and security are two major concerns of ours and on our limited budget they seemed to be unsolvable. The advice and support we've been given by ANS through the Stafford Economic Development District program has, literally, been a lifesaver.

- Peace of Mind Medicaid Consultant

”

TESTIMONIAL

Seacoast Economic Development Stakeholders

The Seacoast Economic Development Stakeholders (SEDS) is a collective entity of economic development stakeholders from Strafford and Rockingham Counties who meet regularly to collaborate, share information and resources, and work collaboratively to promote the economic vitality of our communities and region. SRPC convened the group in March 2020 to increase awareness and improve information sharing on the fast-changing state and local regulations brought by the pandemic. SEDS members include municipal economic development managers, chamber of commerce directors, and staff from planning commissions, and representatives from other allied organizations that play a key role in economic development. In addition, SEDS members serve as a critical voice to help develop local and regional priorities and projects to be incorporated into the Strafford EDD's Comprehensive Economic Development Strategy by acting as our Strategy Committee.

The New Hampshire Department of Business and Economic Affairs (NH BEA) recognized the success of the SEDS model, which served as inspiration for the Collaborative Economic Development Regions (CEDRs) proposed in NH BEA's 2021 Economic Recovery and Expansion Strategy. NH BEA has recognized the Seacoast Economic Development Stakeholders as the CEDR for the greater seacoast region and has sought to replicate its success through the creation of new CEDRs throughout the state.

During FY 2022, SEDS used their platform to advance conversations about key issues affecting the region, such as Housing, Business Operations, Human Resources, Real Estate, Health Care, and the potential impacts of the Russian invasion of Ukraine on New Hampshire businesses.

In fall 2021, SRPC and the SEDS worked in collaboration with the UNH Cooperative Extension to develop and submit a proposal for a Blue Economy Innovation Hub for the Build Back Better Regional Challenge program sponsored by EDA. While the proposal was not funded through that program, it has been added to the CEDS as a priority project, and SRPC and UNH have discussed opportunities to restructure the component tasks to make them more suitable for other funding.

View the [meeting recordings online](#)¹⁹ and view the FY 2022 meeting stats below.

44

calls in FY 2022.

959

cumulative
meeting attendees
in FY 2022.

120

distinct partners
attending in FY
2022.

COLLABORATIONS Spotlight: Explore Moose Mountains

The Explore Moose Mountains (EMM) initiative started with a small community forum in September 2014. The group behind “The Moose” describes itself as a grassroots initiative providing information and support to residents, local businesses, and decision makers by promoting and marketing the wide range of community assets in the Moose Mountains Region. EMM encourages tourists to explore the unique scenic, historic, agricultural, recreational and cultural offerings off NH Routes 16 and 11 in the towns of Brookfield, Farmington, Middleton, Milton, New Durham, Wakefield, and Wolfeboro.

Involved since the inception, SRPC staff have provided technical assistance to EMM in multiple capacities including facilitation of community forums and monthly meetings, graphic design, website support, grant writing, and chairing the EMM Committee.

In February 2022, for the second consecutive year, senior communications and outreach planner Shayna Sylvia, in partnership with Wentworth Economic Development Corporation (WEDCO) and the Explore Moose Mountains (EMM) committee submitted a USDA Rural Development grant application.

In the 2021 application process, EMM’s application was deemed eligible by USDA, however went unfunded due to limited program dollars. Similar to last year’s application, EMM embarked on an effort to raise match funding and was successful in contributing \$30,000 in match funds with donations from the 2021 and 2022 grant rounds.

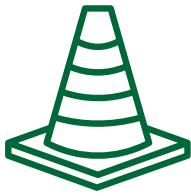
The proposed project, Marketing the Moose, will be implemented by a series of tasks aimed at promoting the region and creating a sustainable framework for increased tourism that positively affects area business. These tasks will include a strategic planning process for EMM, which will allow EMM committee members and key stakeholders to better understand regional needs and create a sustainable, self-reliant business model for supporting tourism and business in the Moose Mountains region. The project will also include a new EMM website, which will become a powerful marketing tool for local businesses, destinations, and events. When the website is completed, EMM will promote it as part of a larger marketing campaign aimed at drawing visitors and tourists to the region following the hardships of the Covid-19 pandemic.

In April 2022 WEDCO was notified that its grant was successful and was offered double the amount applied for; the USDA RD award totaling \$60,000.

In June 2022, EMM kicked off its farmers market program, one of the key program components and in FY 2023 will be completing strategic planning, a new website, and a marketing campaign.



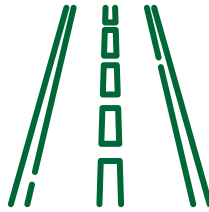
Data Collection by the Numbers



127

traffic counts were set during the 2022 data collection season; **28** were supplemental. View all in the [SRPC traffic count dashboard](https://tinyurl.com/srpc22counts)¹.

<https://tinyurl.com/srpc22counts>



11

of SRPC's 18 communities had traffic counts set within their boundaries in summer 2022.



45

Bicycle and pedestrian counts were conducted in **15** communities in the 2022 data collection season



~4,000

miles were put on SRPC's transit van during the 2022 data collection season.



2

Road Surface Management projects. Data collection for Milton occurred in May 2022 with forecasting occurring in Fall 2022. Earlier in FY 2022, forecasting was completed for Northwood.

Data Team Updates



Summer Intern

Mark Davie joined the data collection team once again for the 2022 field work season. He assisted planning technician Stephen Geis in setting traffic and bicycle-pedestrian counts across the region.

New Bike/Ped Programming

In an effort to build out programming in the area of bicycle and pedestrian counting, SRPC data collection intern Mark Davie and planning technician Stephen Geis planned out 61 locations in 18 municipalities to collect data in FY 2022.

This aligns with Strafford Metropolitan Planning Organization's expanded efforts to build its active transportation program, and the information collected will be included in the Active Transportation plan being drafted in FY 2023.

Social Media, E-Communications & Online Presence

As SRPC's contact list has grown over the years, staff have leveraged several communication methods, including [Bits and Pieces](#)²⁰, a weekly update, and the monthly [Newsletter](#)²¹ to disseminate information to a large audience. SRPC also sends out direct communications on specific project updates or important news on an as-needed basis.

SRPC is active on social media through [Twitter](#)²², [Facebook](#)²³, and [Instagram](#)²⁴ to ensure a broader reach. Staff have the expertise to manage ads on these platforms to generate increased interest and participation on select projects.

SRPC's communications are designed to engage stakeholders and members of the public. In a world where people are often inundated with information, SRPC places a higher emphasis on focused content and graphic design.

160

posts on Facebook, Twitter, and Instagram combined in FY 2022.

32%

average open rate for SRPC's e-news releases; SRPC sent out **95 communications** in FY 2022.

1

press release sent out in FY 2022.

Social Media by the Numbers

Date	Twitter				Facebook				Instagram			
	Followers	Tweets	Engagement (Mentions + Profile Visits)	Impressions	Followers	Posts	Engagemnet	Reach	Followers	Posts	Engagement	Reach
July '21	285	0	99	431	-	5	229	202	182	1	7	101
Aug '21	286	1	20	930	-	3	12	150	185	0	0	0
Sept '21	285	7	173	593	-	10	32	1377	-	5	16	329
Oct '21	285	2	163	345	-	-	-	-	192	4	27	222
Nov '21	284	3	35	409	412	12	45	623	193	3	29	342
Dec '21	285	6	32	479	416	8	67	490	196	4	37	202
Jan '22	286	6	130	536	423	6	96	2954	200	4	25	269
Feb '22	287	7	39	530	426	8	58	2043	206	5	30	246
Mar '22	288	3	3	449	431	4	23	1136	208	2	72	125
Apr '22	288	0	64	472	436	4	390	2922	207	1	1	31
May '22	288	2	0	233	440	7	33	694	210	6	10	184
Jun '22	287	5	16	156	445	10	36	474	212	6	18	196

20 <https://strafford.org/engage/bits-and-pieces/>

21 <https://strafford.org/engage/newsletter/>

22 <https://twitter.com/StraffordRPC>

23 <https://www.facebook.com/StraffordRegionalPlanningCommission>

24 <https://www.instagram.com/strafford.rpc/>

EVENT Spotlight: Resilient Shoreline Tour

In Jun. 2022, SRPC, along with partners at NH Sea Grant and the Great Bay National Estuarine Research Reserve, facilitated a tour of Great Bay shoreline sites in Dover, Durham and Newmarket.

This event allowed the 34 people in attendance to explore the impacts of sea level rise and learn about different strategies that municipalities are using to ensure their shorelines remain safe, resilient, and vibrant.

Along the Cocheco River, and near Henry Law Park and the new kayak launch, Dover public works and planning department staff members Gretchen Young and Steve Bird explained how they are improving stormwater management and enhancing resilience and accessibility of this riverfront park. They also detailed how these principles factor into making decisions for the future waterfront park in Dover.

In Durham at the Town Landing, SRPC and partners talked about flooding risks for Great Bay shorelines and described the impacts of the anticipated dam removal. This was covered by Town Engineer April Talon and Pete Walker from VHB. In addition to this information, Kim Arlen and Brianna Group from the Nature Conservancy highlighted a new community oyster garden, “which was initiated at Town Landing Park in 2021 as a way to involve the public in oyster restoration.”²⁵

At Lubberland Creek, Joanne Glode from the Nature Conservancy detailed how an expanded culvert was used to mitigate road flooding and protect saltmarsh habitat. She was joined by Rachel Stevens from the Great Bay NERR, who, “explained that some salt marshes may not be able to keep up with sea level rise and will slowly convert to mudflats, which could leave some shorelines vulnerable to further erosion.”²⁵ She explained that “...efforts are underway to help salt marshes adapt and migrate inland when possible.”²⁵

Learn more about this important event in Lynn Vaccaro’s [“What Makes A Shoreline Resilient? Creative Strategies for Great Bay”](https://www.nhcaaw.org/what-makes-a-shoreline-resilient-creative-strategies-for-great-bay/) blog²⁵ she wrote for the NH Coastal Adaptation website.



Awards and Awardees

New England Chapter of the Urban and Regional Information Systems Association Web Map/Application Award

SRPC won in the “Web Map/Application” competition held by the New England Chapter of the Urban and Regional Information Systems Association (NEURISA) at its annual conference in September of 2021. NEURISA is a professional association of GIS practitioners in New England.

The award was for SRPC’s Promoting Outdoor Play web app, which won first place in the competition. This map was created using data collected by SRPC staff and volunteers and was spearheaded by GIS Planner Jackson Rand.

SRPC Annual Awards

For the ‘22 annual award, SRPC staff chose to recognize the spirit of volunteerism. Awards were presented to current SRPC Chairperson Dave Landry; longtime Commissioner and Executive Committee member Wayne Burton; and in memoriam, former SRPC chairperson and longtime Commissioner and Executive Committee member, Victoria Parmele.



NHPA Project of the Year

At its 2022 Spring Conference, NHPA awarded SRPC with Project of the Year for Promoting Outdoor Play!

For this project SRPC created a dynamic, forward-facing online resource that connects families with young children to the many recreation resources available in the region. The online platform includes photos, amenities, site details, and other information for over 300 recreational sites! View the map viewer online²⁶.



THIS PAGE IS INTENTIONALLY
LEFT BLANK

FY 2023 BUDGET

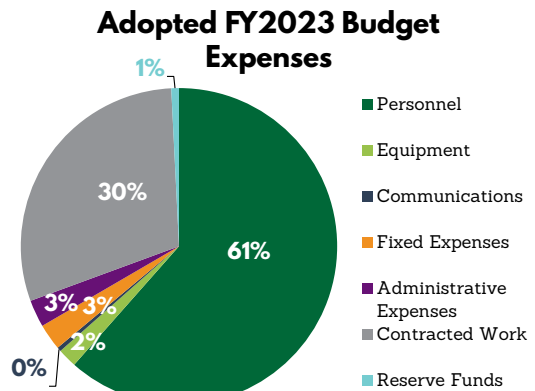
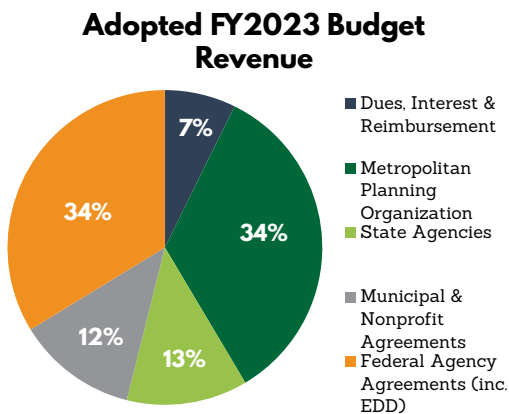
Stafford Regional Planning Commission FY 2022 Budget Summary Table

	Adopted FY22*	Adopted FY23	
	Revenue	Revenue	Net Change
Dues, Interest & Reimbursement	123,523	131,355	7,832
Metropolitan Planning Organization	494,910	614,856	119,946
State Agencies	349,508	224,011	(125,497)
Municipal & Nonprofit Agreements	190,759	222,557	31,798
Federal Agency Agreements (inc. EDD)	403,268	607,150	203,882
Total	1,561,968	1,799,929	237,961

	Expenses	Expenses	Net Change
Personnel	1,035,675	1,099,685	64,010
Equipment	52,924	35,081	(17,843)
Communications	10,873	7,591	(3,282)
Fixed Expenses	46,028	48,197	2,169
Administrative Expenses	68,025	49,725	(18,300)
Contracted Work	303,142	533,040	229,898
Reserve Funds	25,000	14,000	(11,000)
Total	1,541,668	1,787,319	245,651

Net Deficit/Surplus	20,300	12,609	(7,690)
----------------------------	---------------	---------------	----------------

*Based on mid-year budget adopted Dec. 2021



Strafford Regional Planning Commission

FY2023 REVENUES	Adopted FY 22 Net Outside Revenue	Adopted FY2023 Budget Revenue					Net Outside Funding	
		Funding Source Revenue	Internal Dues Match	Outside Source Soft Match	Outside Source Cash Match	Net Outside Funding		
Total	1,561,968	1,799,241	94,976	92,133	688	1,799,929		
Dues, Interest & Reimbursements	123,523	131,355	0	0	0	131,355	7%	
2000 Municipal Dues (minus BRK, NOT, MIL, LEE)	119,402	130,755	0	0	0	130,755		
0000 Interest	100	100	0	0	0	100		
0000 Health Trust reward/ reimbursement	500	500	0	0	0	500		
0000 Misc Revenue	3,520	0	0	0	0	0		
Municipal & Nonprofit Service Agreements	190,759	221,869	4,312	0	688	222,557	12%	
3103 Barrington Future Land Use & Transp. Master Plan Chap.		11,398	(688)	0	688	12,086		
3501 Farmington Town Planner Services	48,000	40,000	0	0	0	40,000		
3505/X Farmington Tax Maps	2,139	1,000	0	0	0	1,000		
4003 New Durham ADU Update		2,500	0	0	0	2,500		
4104/X Newmarket Tax Maps	1,000	1,000	0	0	0	1,000		
4201 Northwood Technical Services	25,000	25,000	0	0	0	25,000		
4301 Nottingham Town Planner Services	28,000	25,000	0	0	0	25,000		
430x Nottingham Trail Maps		1,625	0	0	0	1,625		
4602/X Somersworth Tax Maps	2,720	1,000	0	0	0	1,000		
4603 Somersworth Historic Sites GIS		750	0	0	0	750		
4701 Strafford Town Planner Services	24,000	38,000	0	0	0	38,000		
4702/X Strafford Tax Maps	1	1,000	0	0	0	1,000		
4703 Strafford Master Plan Update		30,595	0	0	0	30,595		
4801 Wakefield CR	2,640	2,500	0	0	0	2,500		
4802 Sanbornville Precinct NBRC Grant Admin	5,000	4,000	0	0	0	4,000		
4803 Wakefield NBRC Grant Admin (Union Hotel)		3,000	0	0	0	3,000		
5002 NHARPC Administration		8,000	0	0	0	8,000		
5031 NRPC Geodata Portal	1,375	0	0	0	0	0		
5052 RPC/Source Water-Coastal Innovative Land Use Guide	5,816	0	0	0	0	0		
5101 POP!/NH Children's Health Foundation	10,883	0	0	0	0	0		
5151 CHAT/Tufts Health Plan Foundation - Healthy Aging	34,000	25,500	5,000	0	0	25,500		
5152 AARP support of CHAT/Tufts Fdn	6,000	0	0	0	0	0		

Strafford Regional Planning Commission

FY2023 REVENUES	Adopted FY 22 Net Outside Revenue	Adopted FY2023 Budget Revenue					
		Funding Source Revenue	Internal Dues Match	Outside Source Soft Match	Outside Source Cash Match	Net Outside Funding	
5501 GIS projects (small billable projects)	1	1	0	0	0	1	
Federal Agency Agreements (including Economic Development District)	403,268	607,150	17,500	52,500	0	607,150	34%
U.S. Dept of Economic Development Administration							
7001 EDD Planning Grant, Dues & Inkind Match	12,935	0	0	0	0	0	
7003 EDD Planning Partnership	58,333	70,000	17,500	52,500		70,000	
7002 CARES Act Recovery and Resiliency	210,000	45,250	0	0	0	45,250	
U.S. Environmental Protection Agency							
7110 Brownfields Community Assessment Grant FY20-23	122,000	16,900	0	0	0	16,900	
U.S. Department of Housing and Urban Development							
7201 HUD EDI CDS - Regional Plans		475,000	0	0	0	475,000	
State Agreements	349,508	224,011	4,500	38,333	0	224,011	12%
Office of Planning and Development, BEA							
6001 Targeted Block Grant	11,111	11,111	0	0	0	11,111	
6002 ARPA Housing Needs Assessment	50,000	35,000	0	0	0	35,000	
600X CEDR Funding	0	50,000	0	0	0	50,000	
Dept of Environmental Services							
3302 Coastal Resilience Grant - Dover	1,507	0	0	0	0	0	
3303 Coastal Resilience Grant - Dover Equity	32,580	0	0	0	0	0	
3403 Durham Groundwater Modeling	26,399	0	0	0	0	0	
3404 Coastal Resilience Grant - Durham	5,946	0	0	0	0	0	
6102/3 Coastal Grant 2022/3	15,000	15,000	2,500	12,500	0	15,000	
6151 PSM Flood Smart Seacoast	10,000	17,000	0	0	0	17,000	
6180 NFWF-Living Shoreline Implementation for Great Bay	27,546	0	0	0	0	0	
6250 Watershed Assistance (Permeable Reactive Barrier)	29,846	17,900	0	11,500	0	17,900	
6251 604(b)-Sunrise Lake Watershed Management Plan	43,496	0	0	0	0	0	
6303 Source Water Protection-ROL and MIL MS4 Storwater Regs	20,000	0	0	0	0	0	

Strafford Regional Planning Commission

FY2023 REVENUES	Adopted FY 22 Net Outside Revenue	Adopted FY2023 Budget Revenue					
		Funding Source Revenue	Internal Dues Match	Outside Source Soft Match	Outside Source Cash Match	Net Outside Funding	
6304 Source Water Protection-Aquifer Ordinance Updates	0	22,000	2,000	0	0	22,000	
University of New Hampshire							
5203 Pathways to Resilience	1,000	0	0	0	0	0	
5204 PREPA Grant-Dover buffers regulation update	7,409	0	0	0	0	0	
5205 PREPA Grant-New Durham shoreland regulation update	9,352	5,000	0	0	0	5,000	
NH Community Development Finance Authority							
6601 CDBG Grant Administration (CAPSC Homeless Shelter)	10,000	0	0	0	0	0	
6602 CDBG Grant Administration (ROC Gafney Home)		8,000	0	0	0	8,000	
Department of Safety Homeland Security							
6501 HazMit Plans PDM19-BAR,NDU,ROL,SOM (FY 202-23)	18,500	500	0	167	0	500	
6502 HazMit Plans BRIC20-DUR, MID, MIL, NOT, STR (FY2023-24)	24,000	42,500	0	14,167	0	42,500	
Metropolitan Planning Organization Agreements	494,910	614,856	68,664	1,300	0	614,856	34%
Dept of Transportation							
8001 UPWP Federal Highways & Transit	494,910	603,000	65,700	1,300	0	603,000	
800X COAST/CMAQ CommuteSmart Seacoast		11,856	2,964	0	0	11,856	
							100%

Strafford Regional Planning Commission

FY2022 EXPENSES	Adopted FY 22 MidYr Budget		Adopted FY 2023 Budget Expenses		Net Change
	Total				
	1,541,668		1,787,319		245,651
PERSONNEL	1,035,675	69%	1,099,685	62%	64,010
Salaries and Hourly Wages	810,991		868,131		57,140
Payroll Taxes	62,041		66,412		4,371
Payroll Processing - QuickBooks	2,600		3,778		1,178
Health Insurance	97,083		89,569		(7,514)
Dental Insurance	5,628		6,190		562
Life Insurance	1,498		1,295		(203)
Shortterm Disability	3,155		2,926		(228)
Longterm Disability	806		748		(58)
FSA Fees	0		0		0
Health Incentives	9,185		11,276		2,091
SIMPLE IRA Pension	23,325		25,647		2,321
Worker's Compensation	1,294		1,909		615
Unemployment Insurance	234		1,969		1,735
Staff Training & Workshops	10,000		14,000		4,000
Professional Dues: AMPO, NHARPC, NHPA, APA, NHMA, NEARC	7,836		5,836		(2,000)
EQUIPMENT	52,924	3%	35,081	2%	(17,843)
ARCInfo/View Software: Maintenance	6,500		5,463		(1,037)
Transpo Software Maintenance: TransCAD	1,500		1,500		0
Office Software: Maintenance, purchase	10,215		7,680		(2,535)
INRIX Database for Transportation Planning	8,200		8,200		0
Traffic Count Supplies and Repair	3,000		3,000		0
Equipment Rental and Repair	500		500		0
Copier Maintenance Contract	3,838		3,838		0
Computers and Peripherals	14,444		3,900		(10,544)
Office Furniture	4,727		1,000		(3,727)
COMMUNICATIONS	10,873	2%	7,591	0%	(3,282)
Postage and Delivery	400		400		0
Office Phone System	4,300		1,164		(3,136)
Internet and Phone Service	3,600		3,600		0
Website Design and Maintenance	2,073		1,427		(646)
Media Outreach Activities	500		1,000		500

Strafford Regional Planning Commission

FY2022 EXPENSES	Adopted FY 22 MidYr Budget		Adopted FY 2023 Budget Expenses		Net Change
FIXED EXPENSES	47,043	5%	46,789	3%	(254)
Property & Liability	5,004		7,173		2,169
Office Vehicle Lease and Maintenance	11,024		11,024		0
Rent	30,000		30,000		0
ADMINISTRATIVE EXPENSES	68,025	1%	49,725	3%	(18,300)
Printing	150		150		0
Audit and Accounting Services	12,000		16,000		4,000
Legal	4,000		4,000		0
Office and Mapping Supplies	3,000		3,000		0
Office Expense	27,875		15,075		(12,800)
Meeting Expenses (Meetings and Meeting Notices)	3,000		3,500		500
Travel	15,000		5,000		(10,000)
Library & Subscriptions: NH Planning Books	2,000		2,000		0
Bank Fees	0		0		0
HealthTrust Employee Health Rewards	1,000		1,000		0
OUTSOURCED CONTRACTS	303,142	20%	533,040	30%	229,897
1000 Financial Services	17,436		0		(17,436)
1000 IT Services	9,000		15,800		6,800
3303 Dover Equity Climate Resilience Consultants	15,495		0		(15,495)
3403 Durham SRF Groundwater Modeling Consultant	10,670		0		(10,670)
3404 Durham Coast Resilience	0		0		0
5204 PREPA Grant-Dover Wetlands Scientist	2,000		0		(2,000)
600X CEDR Funding Pass Through Expenses			40,010		40,010
6250 Watershed Assistance (PRB) Consultants	24,449		12,325		(12,124)
6251 604(b) Sunrise Lake Watershed Mgt Plan Consultants	25,843				(25,843)
7002 EDA CARES Contract support	50,000		4,500		(45,500)
7100 EPA Brownfields - NOBIS Engineering (10/19-9/22)	115,000		14,700		(100,300)
7201 HUD EDI CDS Regional Plans - RPC Pass Through Funds	0		400,000		400,000
8000 Contract Transportation Support (UPWP)	25,000		34,000		9,000
8000.602 FTA 5305e Subcontract to RPC	8,249		11,705		3,457
RESERVE FUND CONTRIBUTION	25,000	0%	14,000	1%	(11,000)
		100%		100%	