

Costs for Rail Improvements

Costs included in the TIGER V Grant Round

TIGER request (70%):	\$1.4 million
NH Northcoast Railroad match (22.5%):	\$450,000
State of New Hampshire match (7.5%):	\$150,000

Budget Breakdown:

Description	Cost
Supply, Install, and Disposal of 10,802 ties @ \$90.00 each	\$972,180.00
Action Ridge Road Grade Crossing	\$75,000.00
Resurface & Regulate 42-mile Rail Line	\$221,820.00
Repair Washout North of Rail House in Ossipee (Includes box culvert, importing fill, new ties, and new tracks)	\$375,000.00
Upgrade to the Siding 0.7 miles North of the Washout to the Existing Loading Dock to Standards	\$100,000.00
Somersworth Crossing Signalization	\$100,000.00
Remove & Replace Radius Rail (4,875 lf @ \$32.00 per lf)	\$156,000.00
Total Project Costs	\$2,000,000.00

Projected Costs for the Northcoast Rail Improvements and the Connection to the Conway Branch Rail Line (3 phases from the 2004 Conway Branch Feasibility Study)

Task	Phase 1	Phase 2	Phase 3
Brush & Weed Control	\$80,000		
Embankments & Cuts	\$50,000	\$80,000	
Culverts & Drainage	\$70,000		
Ballast & Surfacing	\$1,090,000	\$230,000	
Rail	\$628,500	\$143,000	\$11,000,000
Ties	\$1,280,000	\$550,000	
Highway Grade Cross-	\$2,530,000		
Bridges	\$477,000	\$285,000	
Total	\$6,205,500	\$1,288,000	\$11,000,000
Overall Cost	\$18,493,500		

Additional Resources:

- Conway Branch Railroad Line Feasibility Study (2004)
- NHN TIGER V Narrative



• Action Ridge Road Rail Crossing



• Mill No. 1, Somersworth



• Track North of Ossipee Aggregates Engine House

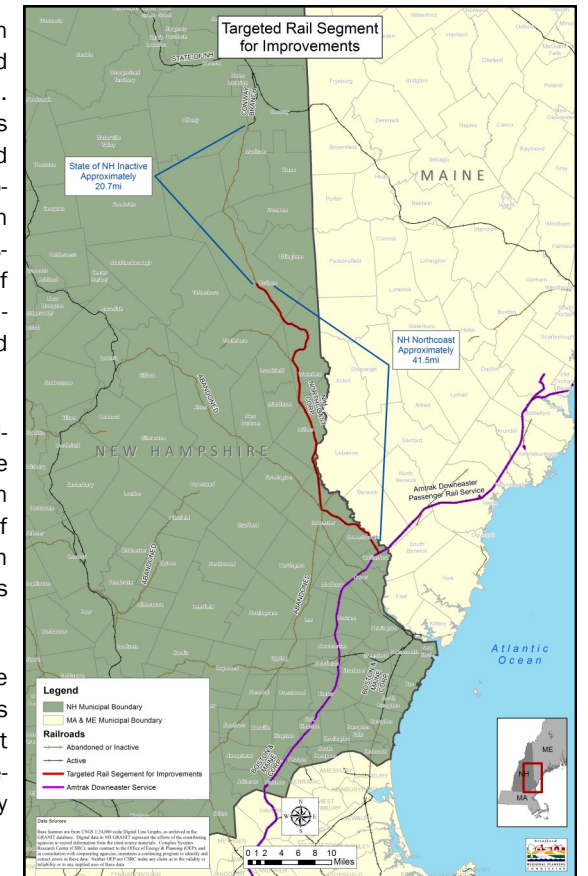
TIGER V: NH Northcoast Rail Improvements

Project Description

The New Hampshire Northcoast Corporation (NHN) operates a 42-mile short line railroad between Ossipee, NH and Rollinsford, NH. This line currently provides the bulk of its freight service to a large sand, gravel, and granite quarry operation in Ossipee, NH, shipping these materials to a trans-load facility in Rochester, NH and to a concrete plant in Boston, MA. NHN also moves a large number of propane cars to a distribution facility in Rochester along its rail line, as well as mixed freight to other customers.

The rail corridor connects with Pan Am Railways' (formerly the Boston & Maine) main line in Rollinsford, NH to the south and to an abandoned rail corridor owned by the State of New Hampshire to the north that runs from Ossipee, NH to Conway, NH with connections to major freight rail routes in northern NH.

The railroad helps to separate what otherwise would necessitate the mixing of large volumes of tourist and commuting traffic with freight and propane trucking along Route 16. Present volume on the line is approximately 5,000 railcars per year.



Improvement Summary

- The repair and refurbishment of a wash-out and a section of track north of NHN's Ossipee location, which will attract new rail business. The repair of the washout and upgrade of the track structure, including tie replacement, new ballast and resurfacing will open up hundreds of acres in Ossipee for new business and economic growth.
- The upgrade of two grade crossings for safety reasons.
 - Somersworth grade crossing at Mill No. 1
 - Acton Ridge Road grade crossing in Wakefield
- The renovation of the track structure in key areas that will allow for the safe increase in the volume of rail cars in the rail corridor.

